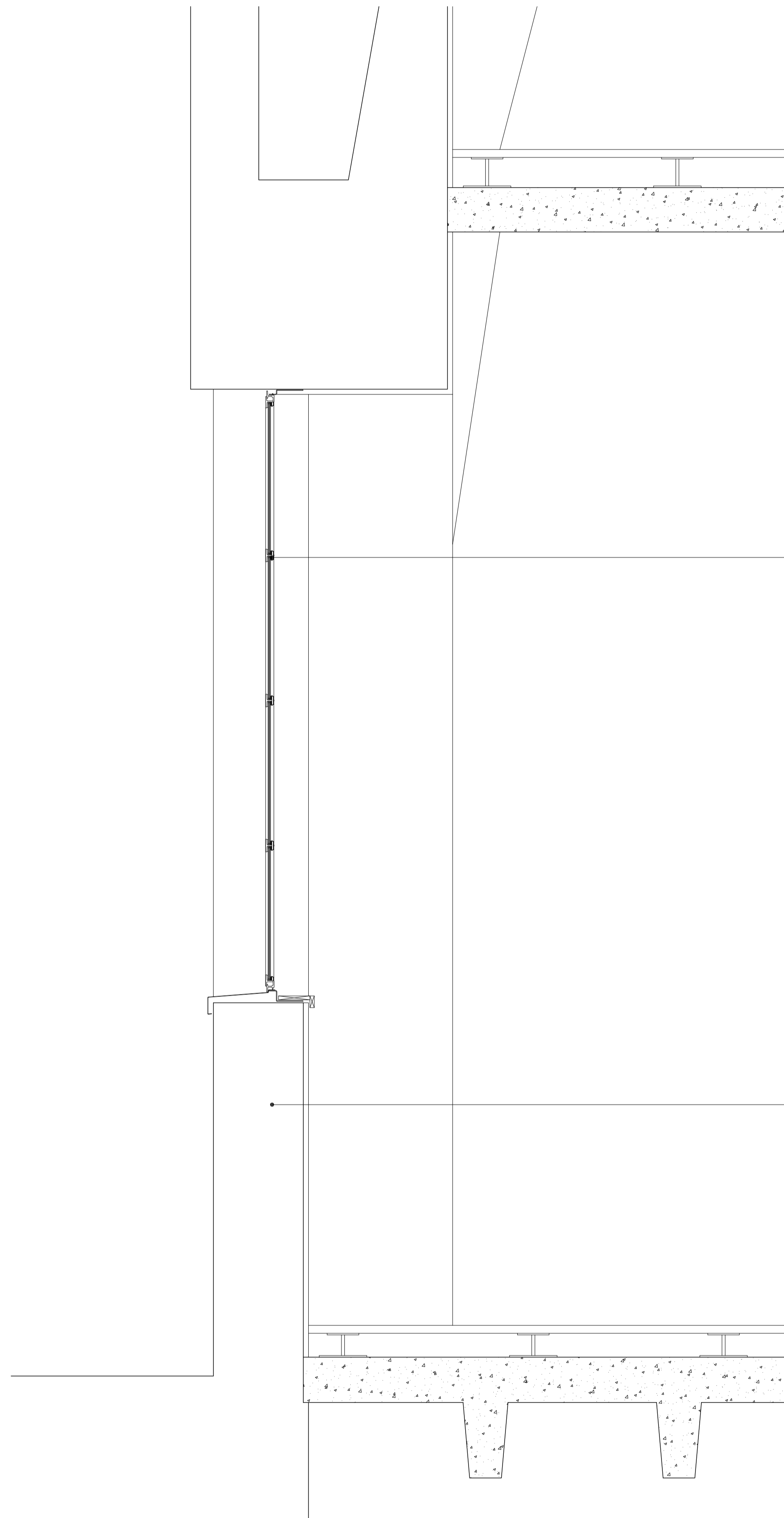
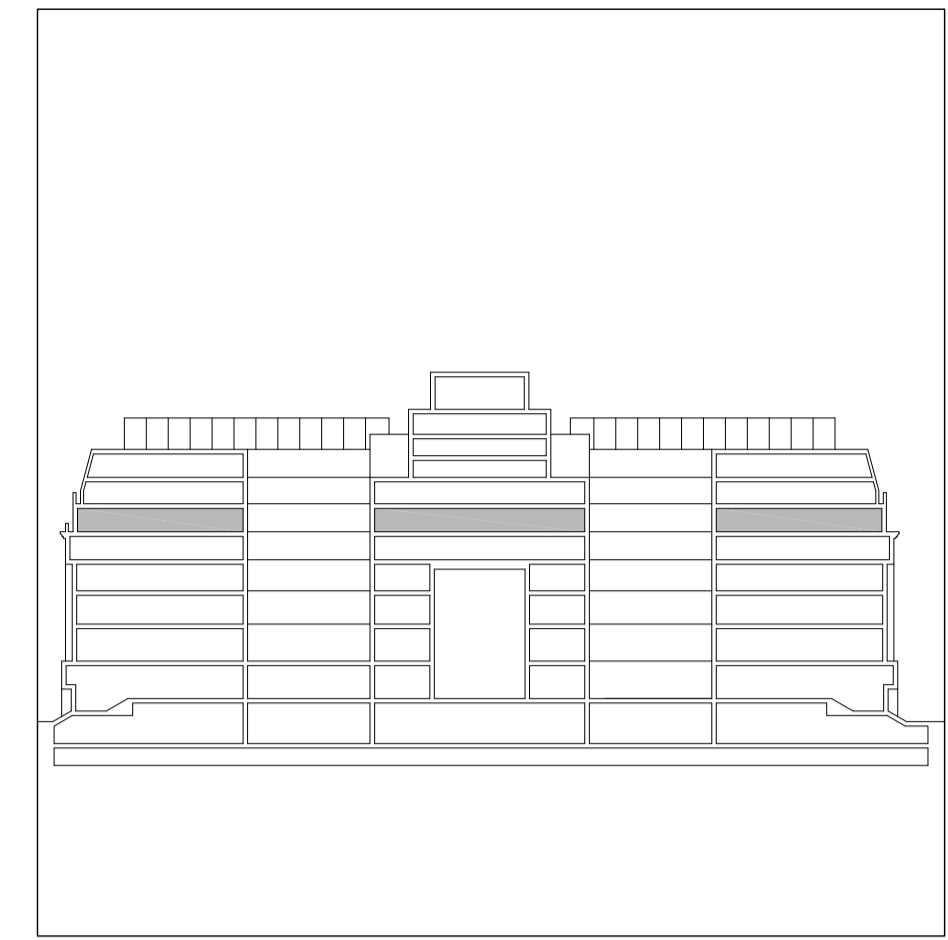


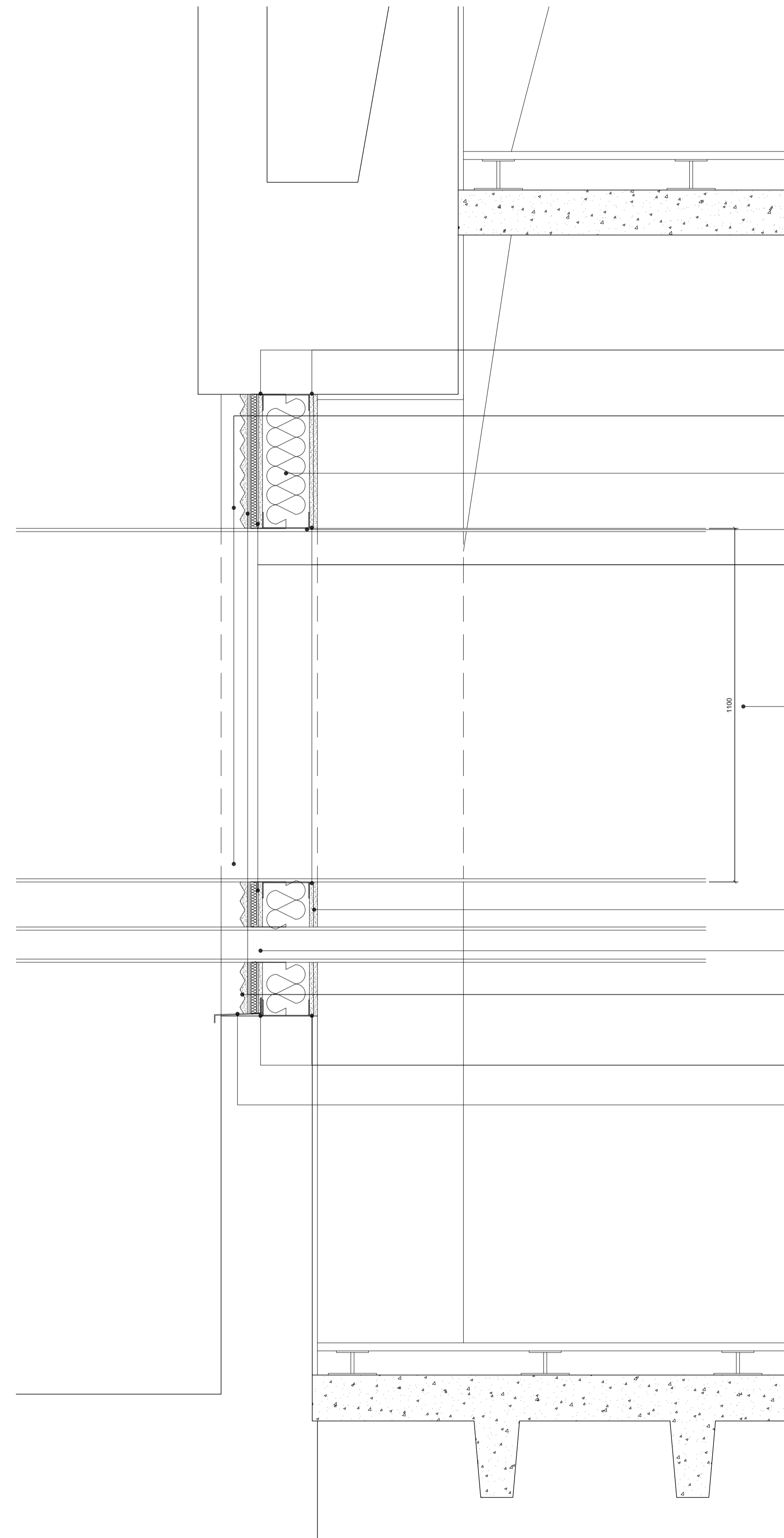
Do not scale from drawings  
 All dimensions are in mm unless otherwise stated  
 All dimensions to be verified on site before proceeding with the work  
 Any discrepancies to be notified in writing to Architect Immediately  
 All boundaries indicative only and to be confirmed by others



Existing windows removed to allow ventilation ducts to pass through opening, windows to be retained for potential future reinstatement

Existing external wall

1 Existing Detail Section through Window



- Sealant to all joints
- Aluminium flashing to all sides of ductwork
- Rockwool insulation positioned in the centre of the studs, held in place by Gypframe service support plate or suitable alternative
- 146mm Gypframe 'C' section stud or acceptable alternative
- Sealant to all joints
- 700x1100mm Ductwork passing through window opening
- 2 layers of 12.5mm plasterboard to the inside face of the metal stud
- 1 layer of cement board to the outside face of the metal stud
- StoTherm Classic K System fixed to cementitious board
- Sealant to all joints
- Flashing to the sill to match existing

2 Proposed Detail Section through Window Opening with Ductwork



-	29.11.19	Issued for Planning	WP
REV	DATE	NOTES	INT

**PLANNING**

**HUTCHINSON & PARTNERS**

3,14 The Record Hall, 16-16A Baldwin's Gardens, London, EC1N 7RJ  
 T 020 3176 8196 e. info@hutchinsonandpartners.com w. hutchinsonandpartners.com

JOB TITLE  
**LABS, Victoria House, Camden**

DRAWING TITLE / LOCATION  
**Proposed Detail Section through Window with Ductwork Penetrations**

DRAWN BY	CHECKED	SCALE	STATUS
WP	JB	1:10 at A1/ 1:20 at A3	PLANNING

PROJECT	DRAWING NO	REVISION
19023	01 AP 3100 001	-

CLIENT

