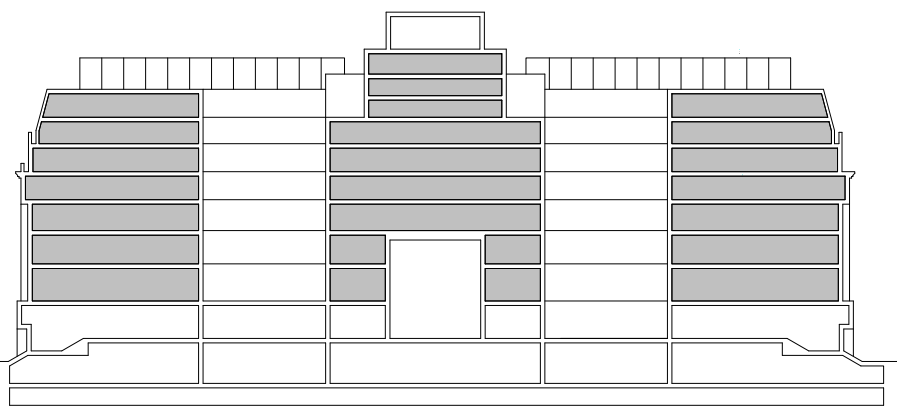
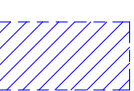


All dimensions are in mm unless otherwise stated  
All dimensions to be verified on site before proceeding with the work  
Any discrepancies to be notified in writing to Architect immediately  
All boundaries indicative only and to be confirmed by others



KEY:



Existing windows removed to allow ventilation ducts to pass through opening located behind existing high level parapet. Windows to be carefully removed and retained for potential future reinstallation.

29.11.19	Issued for Planning	WP
REV	DATE	NOTES

## PLANNING

### HUTCHINSON & PARTNERS

3.14 The Record Hall, 16-16A Baldwin's Garden, London, EC1N 7RJ  
t. 020 3176 8196 e. info@hutchinsonandpartners.com w. www.hutchinsonandpartners.com

JOB TITLE  
LABS, Victoria House, Camden

DRAWING TITLE / LOCATION  
Proposed Bloomsbury Square Elevation with  
Level 05 Ductwork Penetrations - North

DRAWN BY WP	CHECKED JB	SCALE @ A1 1:100	STATUS PLANNING
----------------	---------------	---------------------	--------------------

PROJECT 19023	DRAWING NO 01 AP 0020 305	REVISION -
------------------	------------------------------	---------------

CLIENT



© 2019 HUTCHINSON & PARTNERS Limited

19/02/2019 10:52:12