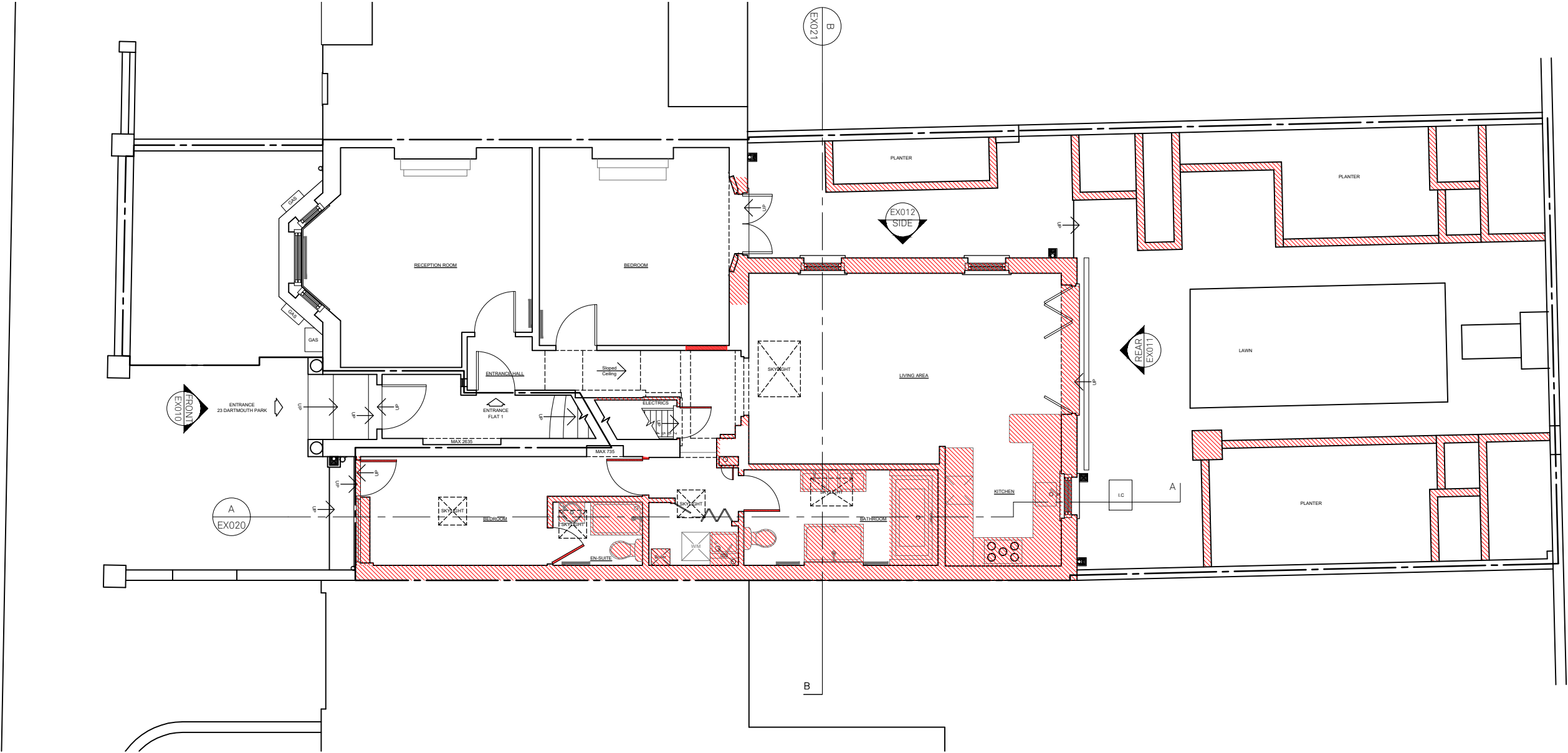


DO NOT SCALE
USE FIGURED DIMENSIONS ONLY.
ALL DISCREPANCIES TO BE VERIFIED WITH ARCHITECT PRIOR
TO ORDERING OR CONSTRUCTION/EXECUTION.

SETTING OUT
CONFIRM ALL SETTING OUT WITH ARCHITECT PRIOR TO
CONSTRUCTION.

KEY

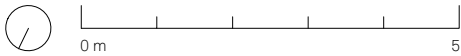


EXISTING
GROUND FLOOR PLAN

1:100

Site boundary

To be demolished.



PROJECT NO
Flat 1, 23 Dartmouth Park Hill 19047

DRAWING NO
EX G FLOOR + BASEMENT PLANS EX001

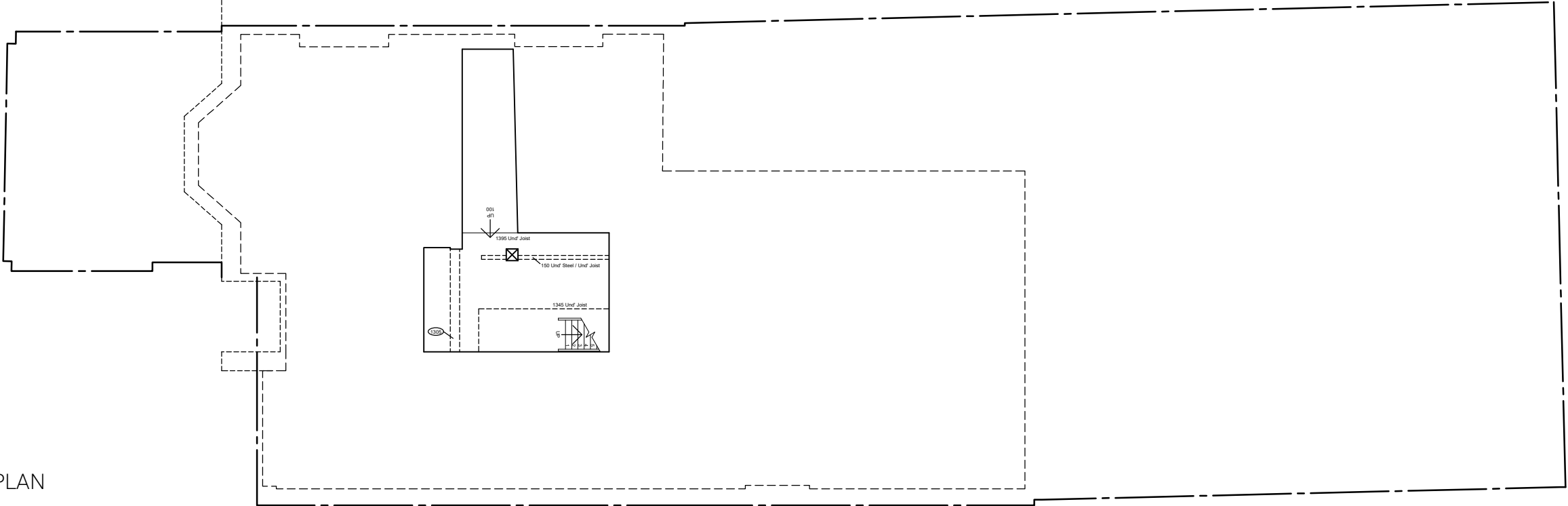
STATUS REVISION
PLANNING -

DATE 14/02/2020
SCALES/PAPER SIZE 1:100/A3
DRAWN/CHECKED BW

Architecture
For London
82—84
Clerkenwell Rd
London
EC1M 5RF
020 3637 4236
architecture
forlondon.com

EXISTING
BASEMENT PLAN

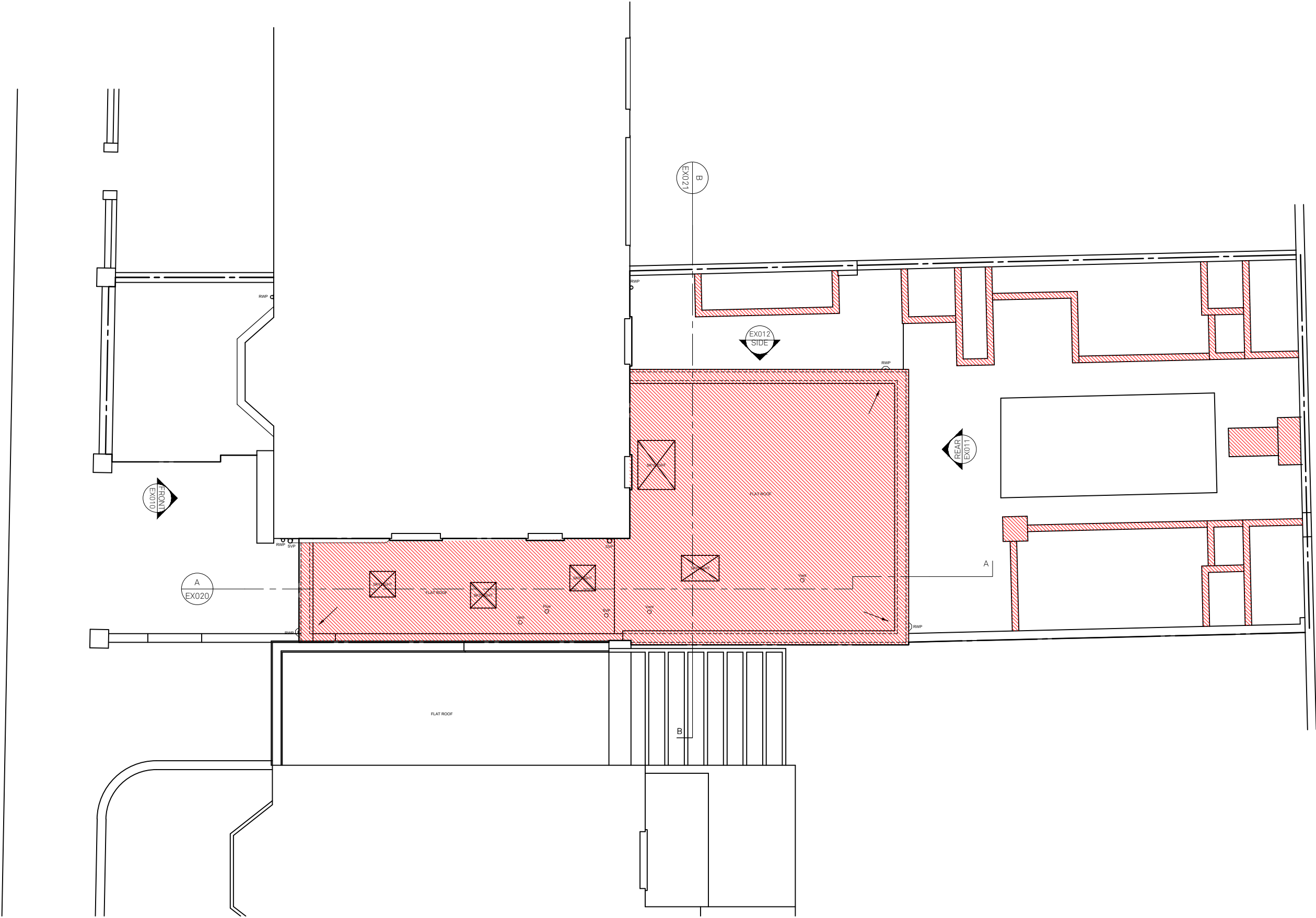
1:100



DO NOT SCALE
USE FIGURED DIMENSIONS ONLY.
ALL DISCREPANCIES TO BE VERIFIED WITH ARCHITECT PRIOR
TO ORDERING OR CONSTRUCTION/EXECUTION.

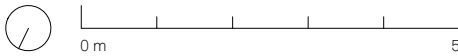
SETTING OUT
CONFIRM ALL SETTING OUT WITH ARCHITECT PRIOR TO
CONSTRUCTION.

KEY



Site boundary

To be demolished.



PROJECT NO
Flat 1, 23 Dartmouth Park Hill 19047

DRAWING NO
EX ROOF PLANS EX003

STATUS REVISION
PLANNING -

DATE 14/02/2020
SCALES/PAPER SIZE 1:100/A3
DRAWN/CHECKED BW

Architecture
For London
82—84
Clerkenwell Rd
London
EC1M 5RF
020 3637 4236
architecture
forlondon.com

DO NOT SCALE
USE FIGURED DIMENSIONS ONLY.
ALL DISCREPANCIES TO BE VERIFIED WITH ARCHITECT PRIOR
TO ORDERING OR CONSTRUCTION/EXECUTION.

SETTING OUT
CONFIRM ALL SETTING OUT WITH ARCHITECT PRIOR TO
CONSTRUCTION.

KEY



To be demolished.



PROJECT NO
Flat 1, 23 Dartmouth Park Hill 19047

DRAWING NO
EX FRONT ELEVATION EX010

STATUS REVISION
PLANNING -

DATE 14/02/2020
SCALES/PAPER SIZE 1:100/A3
DRAWN/CHECKED BW

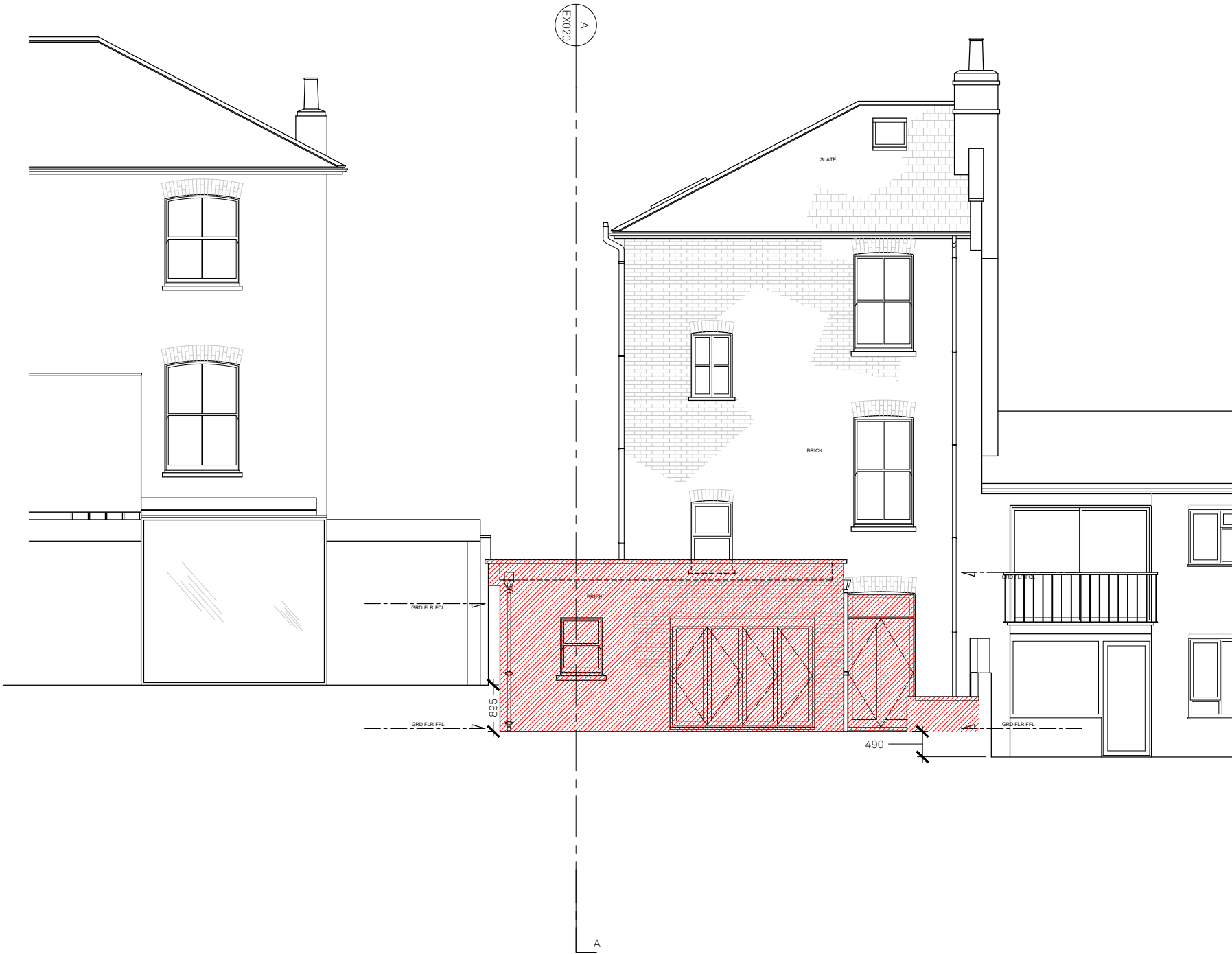
Architecture
For London
82—84
Clerkenwell Rd
London
EC1M 5RF
020 3637 4236
architecture
forlondon.com

EXISTING
FRONT ELEVATION (EAST)
1:100

DO NOT SCALE
USE FIGURED DIMENSIONS ONLY.
ALL DISCREPANCIES TO BE VERIFIED WITH ARCHITECT PRIOR
TO ORDERING OR CONSTRUCTION/EXECUTION.

SETTING OUT
CONFIRM ALL SETTING OUT WITH ARCHITECT PRIOR TO
CONSTRUCTION.

KEY



To be demolished.

0 m 5

PROJECT NO
Flat 1, 23 Dartmouth Park Hill 19047

DRAWING NO
EX REAR ELEVATION EX011

STATUS REVISION
PLANNING -

DATE 14/02/2020
SCALES/PAPER SIZE 1:100/A3
DRAWN/CHECKED RA/BW


Architecture
For London
82—84
Clerkenwell Rd
London
EC1M 5RF
020 3637 4236
architecture
forlondon.com

EXISTING
REAR ELEVATION (WEST)
1:100

DO NOT SCALE
USE FIGURED DIMENSIONS ONLY.
ALL DISCREPANCIES TO BE VERIFIED WITH ARCHITECT PRIOR
TO ORDERING OR CONSTRUCTION/EXECUTION.

SETTING OUT
CONFIRM ALL SETTING OUT WITH ARCHITECT PRIOR TO
CONSTRUCTION.

KEY

 To be demolished.

0 m 5

PROJECT NO
Flat 1, 23 Dartmouth Park Hill 19047

DRAWING NO
EX SIDE ELEVATION EX012

STATUS REVISION
PLANNING -

DATE 14/02/2020
SCALES/PAPER SIZE 1:100/A3
DRAWN/CHECKED BW

Architecture
For London
82—84
Clerkenwell Rd
London
EC1M 5RF
020 3637 4236
architecture
forlondon.com

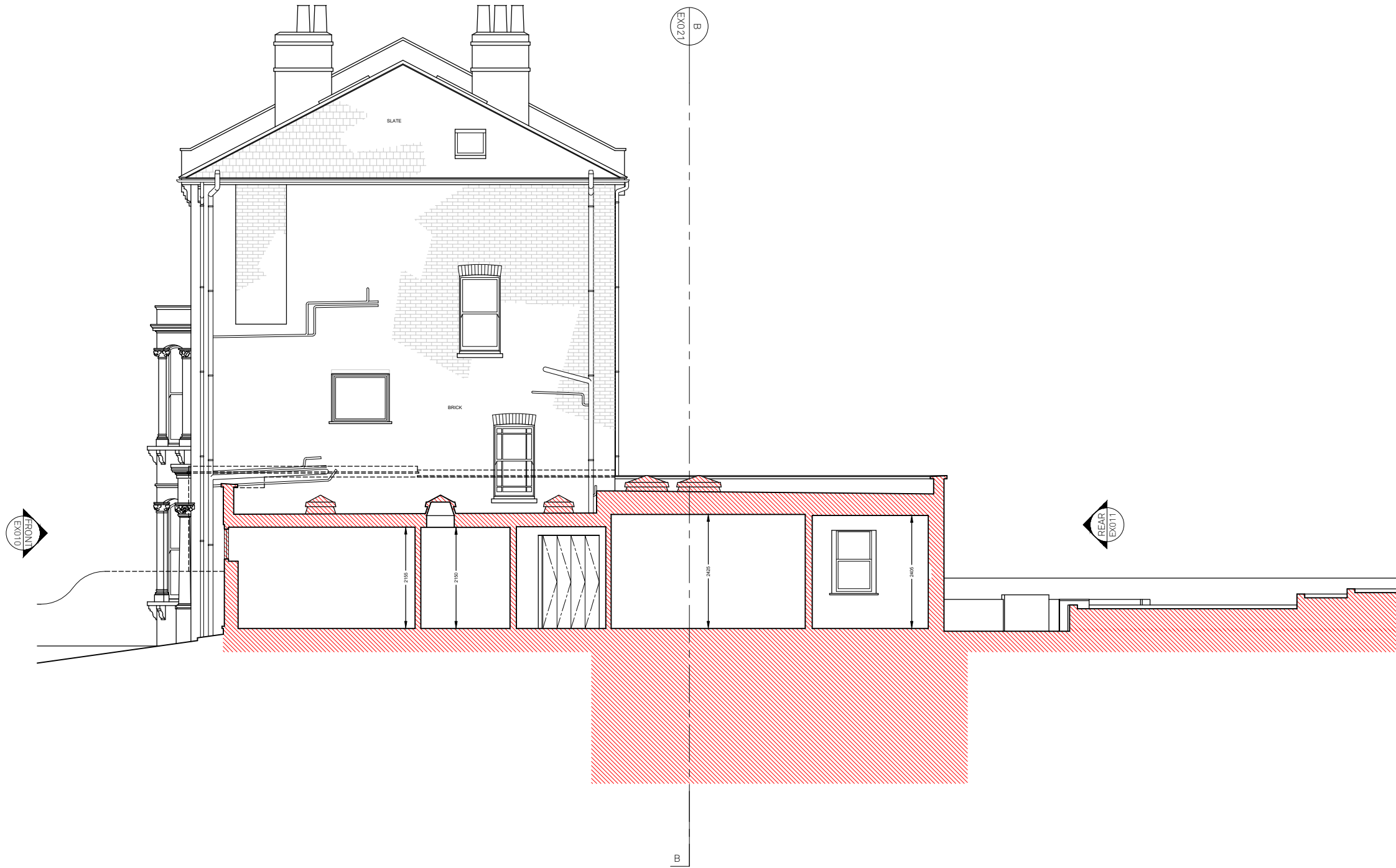
EXISTING
SIDE ELEVATION (SOUTH)

1:100

DO NOT SCALE
USE FIGURED DIMENSIONS ONLY.
ALL DISCREPANCIES TO BE VERIFIED WITH ARCHITECT PRIOR
TO ORDERING OR CONSTRUCTION/EXECUTION.

SETTING OUT
CONFIRM ALL SETTING OUT WITH ARCHITECT PRIOR TO
CONSTRUCTION.

KEY



PROJECT NO
Flat 1, 23 Dartmouth Park Hill 19047

DRAWING NO
EX SECTION A EX020

STATUS REVISION
PLANNING -

DATE 14/02/2020
SCALES/PAPER SIZE 1:100/A3
DRAWN/CHECKED RA/BW

Architecture
For London
82—84
Clerkenwell Rd
London
EC1M 5RF
020 3637 4236
architecture
forlondon.com

DO NOT SCALE
USE FIGURED DIMENSIONS ONLY.
ALL DISCREPANCIES TO BE VERIFIED WITH ARCHITECT PRIOR
TO ORDERING OR CONSTRUCTION/EXECUTION.

SETTING OUT
CONFIRM ALL SETTING OUT WITH ARCHITECT PRIOR TO
CONSTRUCTION.

KEY



To be demolished.

0 m 5

PROJECT NO
Flat 1, 23 Dartmouth Park Hill 19047

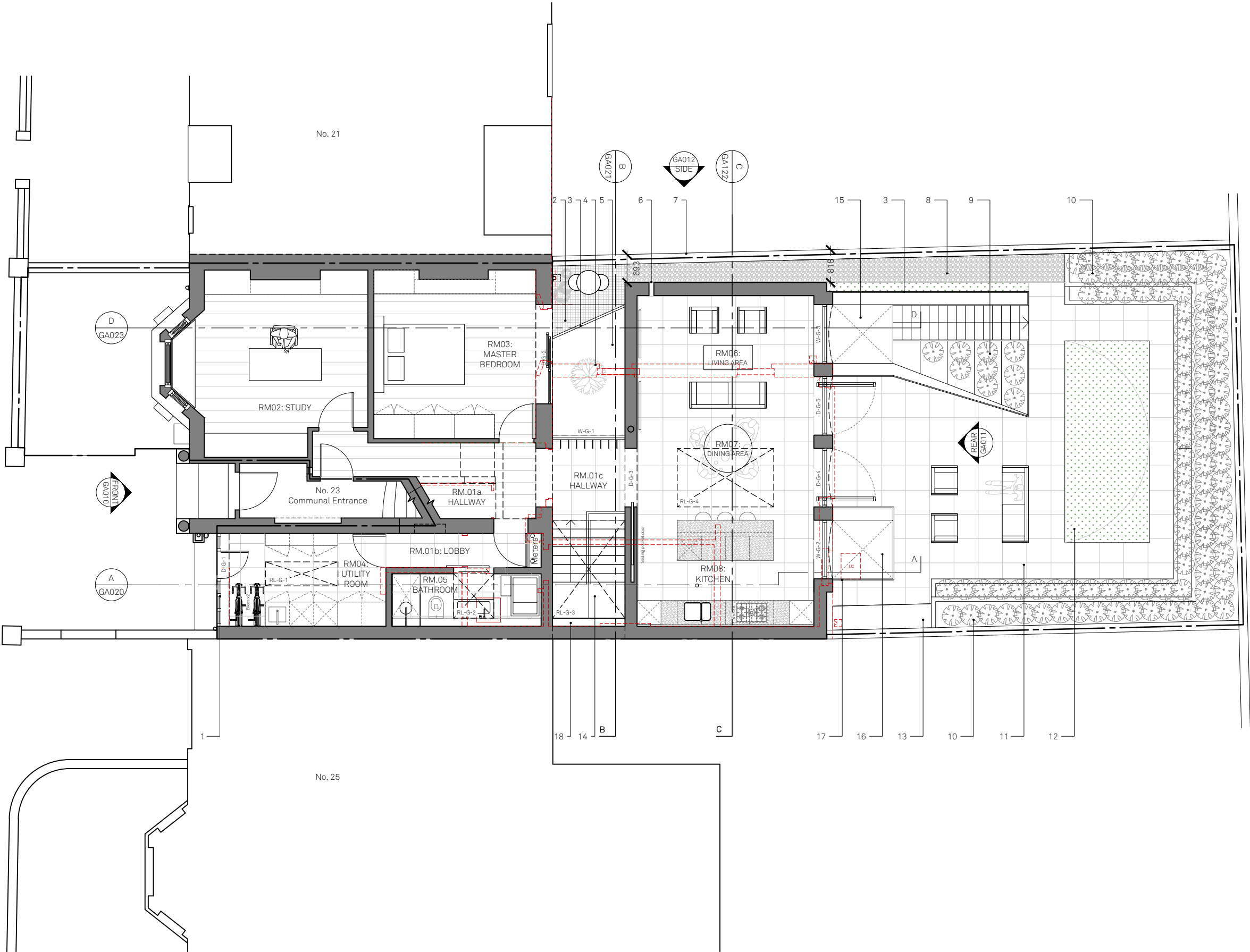
DRAWING NO
EX SECTION B EX021

STATUS REVISION
PLANNING -

DATE 14/02/2020
SCALES/PAPER SIZE 1:100/A3
DRAWN/CHECKED RA/BW

EXISTING
SECTION B
1:100

Architecture
For London
82—84
Clerkenwell Rd
London
EC1M 5RF
020 3637 4236
architecture
forlondon.com



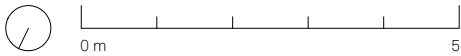
DO NOT SCALE
USE FIGURED DIMENSIONS ONLY.
ALL DISCREPANCIES TO BE VERIFIED WITH ARCHITECT PRIOR
TO ORDERING OR CONSTRUCTION/EXECUTION.

SETTING OUT
CONFIRM ALL SETTING OUT WITH ARCHITECT PRIOR TO
CONSTRUCTION.

- KEY
1. New timber garage screen and door with glazed elements
 2. Balcony over lightwell
 3. Light coloured metal balustrade
 4. New tree in lightwell
 5. External lightwell 1 to basement
 6. Cat flap
 7. Party fence wall retained
 8. Gravel path
 9. Stepped stone planters to match stone paving
 10. Brick planters to mach brick facade
 11. Stone paving to terrace
 12. Low level planting/Lawn
 13. Garden store
 14. Stairs down to basement
 15. External lightwell 2 to basement
 16. External lightwell 3 to basement
 17. Glass balustrade
 18. Service Zone

- D-G-1: New timber garage screen and door with glazed elements
D-G-2: Glazed sliding door w/ light coloured aluminium frame
D-G-3: Pocket sliding timber door
D-G-4: Glazed pivot door w/ light coloured aluminium frame
D-G-5: Glazed pivot door w/ light coloured aluminium frame
W-G-1: Frameless full height glazed window with light coloured metal privacy screen.
W-G-2: Fixed glazed window w/ light coloured aluminium frame
W-G-2: Fixed glazed window w/ light coloured aluminium frame
RL-G-1: Frameless rooflight 1 above
RL-G-2: Frameless rooflight 2 above
RL-G-3: Frameless rooflight 3 above
RL-G-4: Frameless rooflight 4 above

- Existing, to be demolished
— Site boundary



PROJECT NO
Flat 1, 23 Dartmouth Park Hill 19047

DRAWING NO
PR G FLOOR PLANS GA001

STATUS REVISION
PLANNING A

DATE 14/02/2020
SCALES/PAPER SIZE 1:100/A3
DRAWN/CHECKED BW

Architecture
For London
82—84
Clerkenwell Rd
London
EC1M 5RF
020 3637 4236
architecture
forlondon.com

DO NOT SCALE
USE FIGURED DIMENSIONS ONLY.
ALL DISCREPANCIES TO BE VERIFIED WITH ARCHITECT PRIOR TO ORDERING OR CONSTRUCTION/EXECUTION.

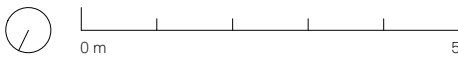
SETTING OUT
CONFIRM ALL SETTING OUT WITH ARCHITECT PRIOR TO CONSTRUCTION.

- KEY
- 1. Balcony above
 - 2. Internal courtyard tree
 - 3. External lightwell 1
 - 4. Gravel
 - 5. Nook with bench
 - 6. External stone steps up to garden
 - 7. Stone planters to match stone paving
 - 8. Steps up to ground floor
 - 9. External lightwell 2
 - 10. External lightwell 3
 - 11. Built-in joinery

- D-B-1: Glazed sliding door w/ light coloured aluminium frame
D-B-2: Glazed sliding door w/ light coloured aluminium frame
D-B-3: Glazed sliding door w/ light coloured aluminium frame
D-B-4: Glazed sliding door w/ light coloured aluminium frame

- W-B-1: Frameless full height glazed window

Site boundary



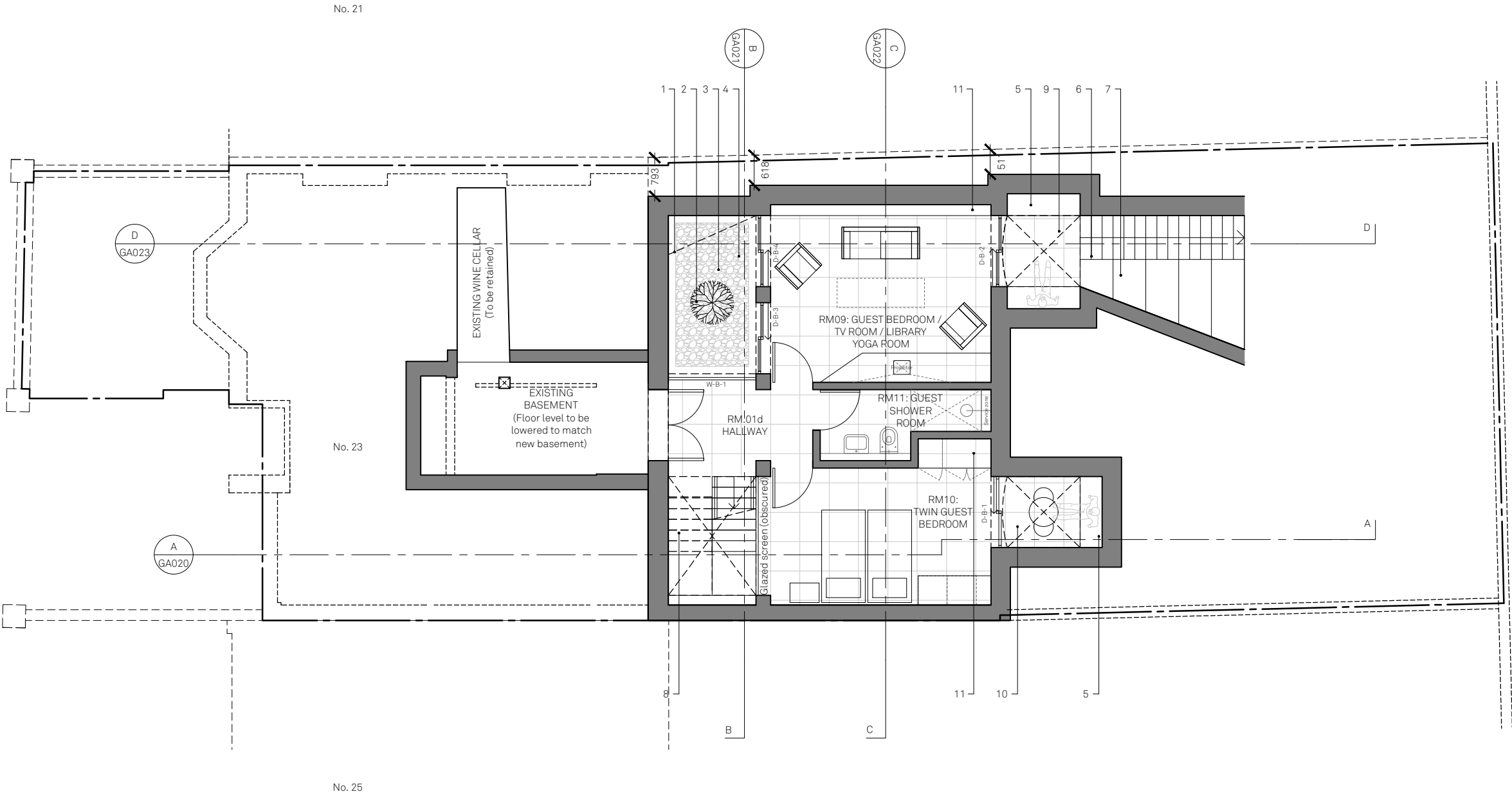
PROJECT NO
Flat 1, 23 Dartmouth Park Hill 19047

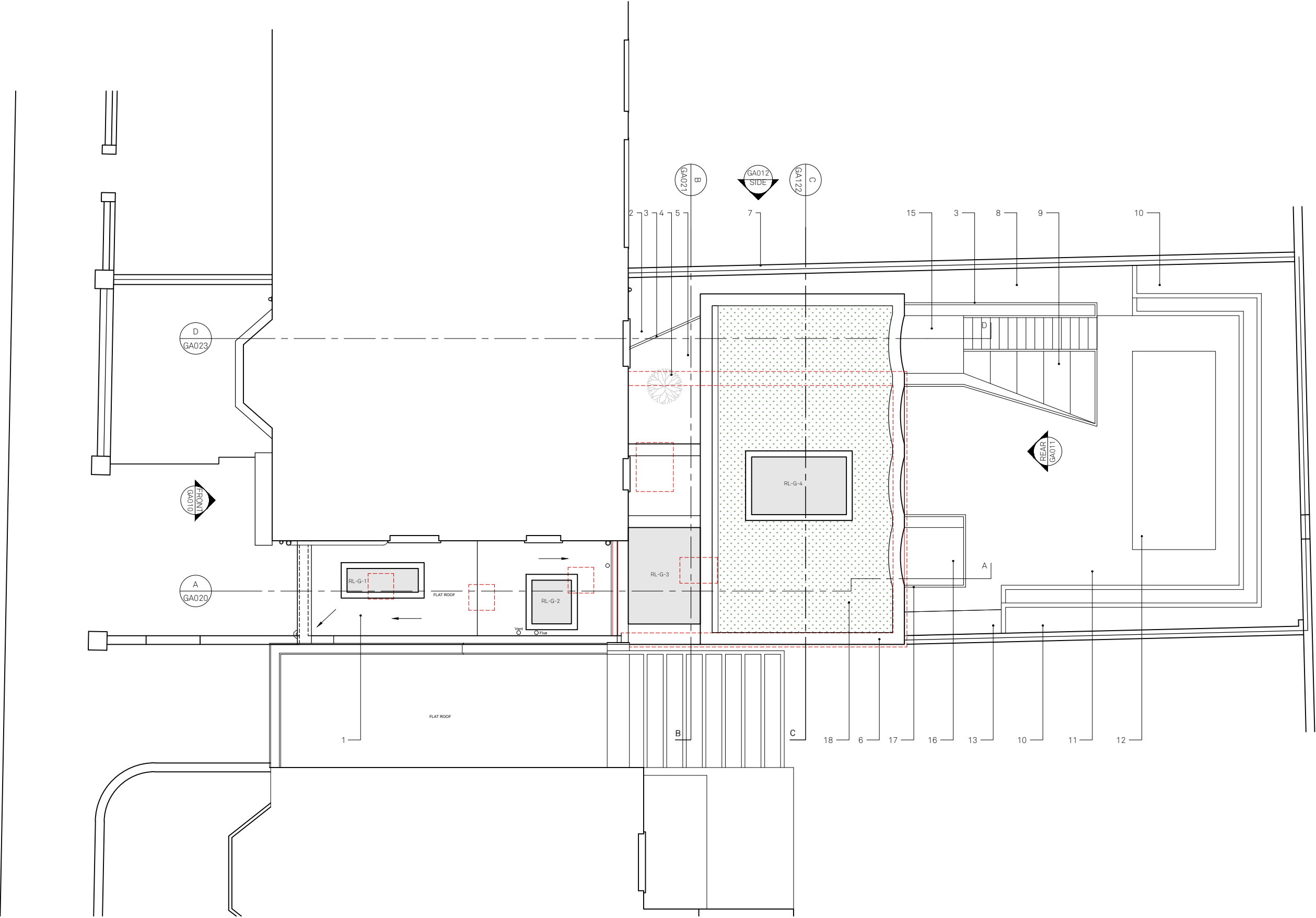
DRAWING NO
PR BASEMENT PLAN GA002

STATUS REVISION
PLANNING A

DATE 14/02/2020
SCALES/PAPER SIZE 1:100/A3
DRAWN/CHECKED BW

Architecture
For London
82—84
Clerkenwell Rd
London
EC1M 5RF
020 3637 4236
architecture
forlondon.com





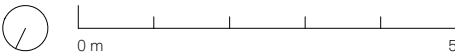
DO NOT SCALE
USE FIGURED DIMENSIONS ONLY.
ALL DISCREPANCIES TO BE VERIFIED WITH ARCHITECT PRIOR
TO ORDERING OR CONSTRUCTION/EXECUTION.

SETTING OUT
CONFIRM ALL SETTING OUT WITH ARCHITECT PRIOR TO
CONSTRUCTION.

- KEY
1. Single ply roof laid to falls
 2. Balcony over lightwell
 3. Light coloured metal balustrade
 4. New tree in lightwell
 5. External lightwell 1 to basement
 6. Brick Parapet
 7. Party fence wall retained
 8. Gravel path
 9. Stepped stone planters to match stone paving
 10. Brick planters to mach brick facade
 11. Stone paving to terrace
 12. Low level planting/Lawn
 13. Garden store
 14. Stairs down to basement
 15. External lightwell 2 to basement
 16. External lightwell 3 to basement
 17. Glass balustrade
 18. Green roof

- D-G-1: New timber garage screen and door with glazed elements
- D-G-2: Glazed sliding door w/ light coloured aluminium frame
- D-G-3: Pocket sliding timber door
- D-G-4: Glazed pivot door w/ light coloured aluminium frame
- D-G-5: Glazed pivot door w/ light coloured aluminium frame
- W-G-1: Frameless full height glazed window with light coloured metal privacy screen.
- W-G-2: Fixed glazed window w/ light coloured aluminium frame
- W-G-2: Fixed glazed window w/ light coloured aluminium frame
- RL-G-1: Frameless rooflight 1 above
- RL-G-2: Frameless rooflight 2 above
- RL-G-3: Frameless rooflight 3 above
- RL-G-4: Frameless rooflight 4 above

- Existing, to be demolished
- Site boundary



PROJECT NO
Flat 1, 23 Dartmouth Park Hill 19047

DRAWING NO
PR ROOF PLANS GA003

STATUS REVISION
PLANNING -

DATE 14/02/2020
SCALES/PAPER SIZE 1:100/A3
DRAWN/CHECKED BW

Architecture
For London
82—84
Clerkenwell Rd
London
EC1M 5RF
020 3637 4236
architecture
forlondon.com

DO NOT SCALE
USE FIGURED DIMENSIONS ONLY.
ALL DISCREPANCIES TO BE VERIFIED WITH ARCHITECT PRIOR
TO ORDERING OR CONSTRUCTION/EXECUTION.

SETTING OUT
CONFIRM ALL SETTING OUT WITH ARCHITECT PRIOR TO
CONSTRUCTION.

- KEY
- 1. Existing parapet retained
 - 2. New timber garage screen and door with obscured glazing



Existing, to be demolished



PROJECT NO
Flat 1, 23 Dartmouth Park Hill 19047

DRAWING NO
PR FRONT ELEVATION GA010

STATUS REVISION
PLANNING -

DATE 14/02/2020
SCALES/PAPER SIZE 1:100/A3
DRAWN/CHECKED BW

Architecture
For London
82—84
Clerkenwell Rd
London
EC1M 5RF
020 3637 4236
architecture
forlondon.com

PROPOSED
FRONT ELEVATION (EAST)
1:100

DO NOT SCALE
USE FIGURED DIMENSIONS ONLY.
ALL DISCREPANCIES TO BE VERIFIED WITH ARCHITECT PRIOR TO ORDERING OR CONSTRUCTION/EXECUTION.

SETTING OUT
CONFIRM ALL SETTING OUT WITH ARCHITECT PRIOR TO CONSTRUCTION.

- KEY
- 1. Pale brick facade with slurry finish
 - 2. Rooflight upstand
 - 3. Garden store
 - 4. External lightwell 2
 - 5. External lightwell 3
 - 6. Pale Metal balustrade
 - 7. Nook with bench
 - 8. Existing party wall retained
- D-G-4: Glazed pivot door w/ light coloured aluminium frame
- D-G-5: Glazed pivot door w/ light coloured aluminium frame.
- W-G-2: Fixed glazed window w/ light coloured aluminium frame
- W-G-2: Fixed glazed window w/ light coloured aluminium frame



Existing, to be demolished



PROJECT NO
Flat 1, 23 Dartmouth Park Hill 19047

DRAWING NO
PR REAR ELEVATION GA011

STATUS REVISION
PLANNING -

DATE 14/02/2020
SCALES/PAPER SIZE 1:100/A3
DRAWN/CHECKED BW

Architecture
For London
82—84
Clerkenwell Rd
London
EC1M 5RF
020 3637 4236
architecture
forlondon.com

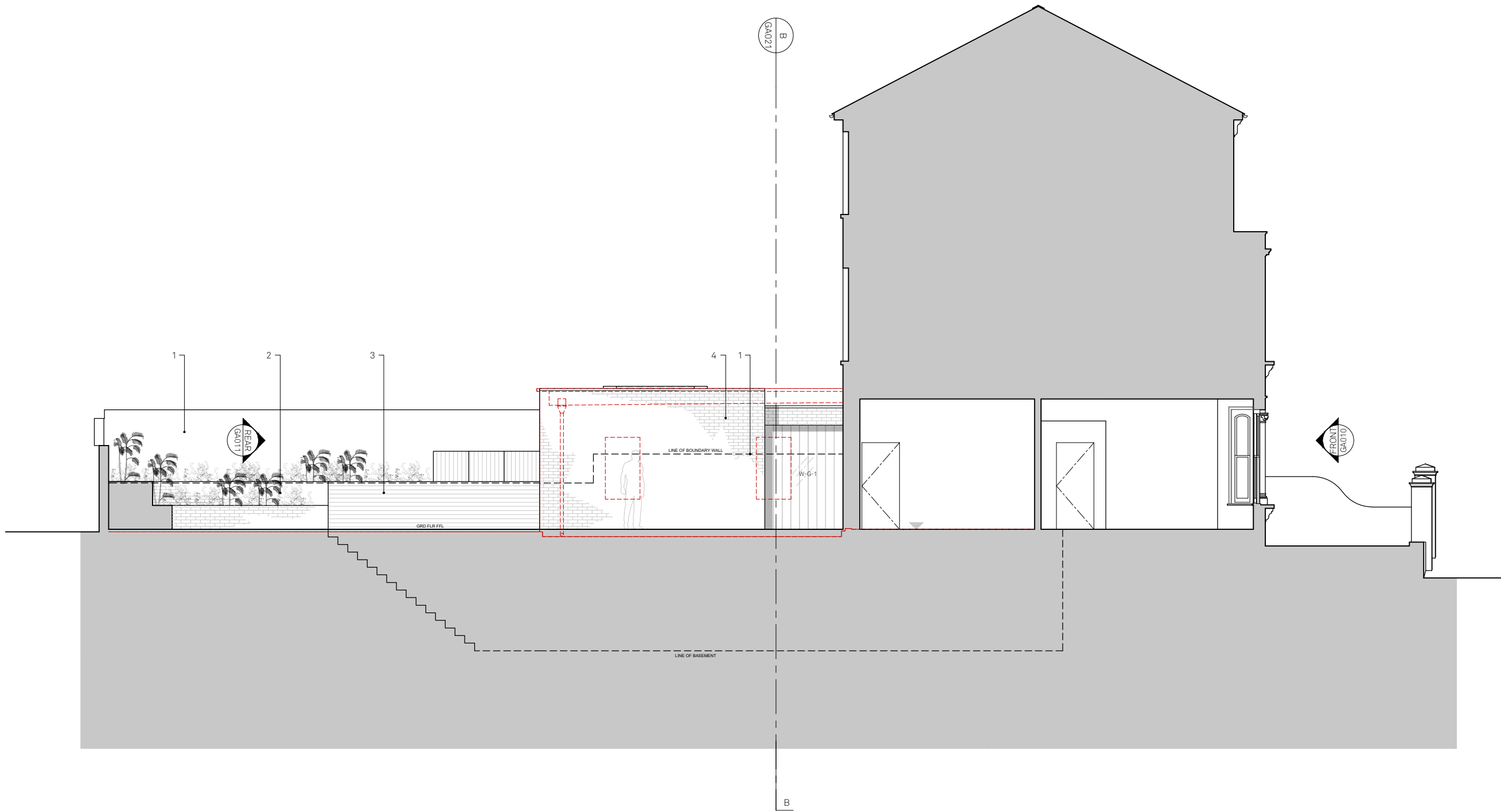
PROPOSED
REAR SECTIONAL ELEVATION (WEST)
1:100

DO NOT SCALE
USE FIGURED DIMENSIONS ONLY.
ALL DISCREPANCIES TO BE VERIFIED WITH ARCHITECT PRIOR TO ORDERING OR CONSTRUCTION/EXECUTION.

SETTING OUT
CONFIRM ALL SETTING OUT WITH ARCHITECT PRIOR TO CONSTRUCTION.

- KEY
- 1. Existing boundary wall retained
 - 2. Pale brick planters with slurry finish to match extension facade
 - 3. Pale metal balustrade
 - 4. Pale brick facade with slurry finish

W-G-1: Frameless full height glazed window with light coloured metal privacy screen.



- Existing, to be demolished
— Site boundary

0 m 5

PROJECT NO
Flat 1, 23 Dartmouth Park Hill 19047

DRAWING NO
PR SIDE ELEVATION GA012

STATUS REVISION
PLANNING -

DATE 14/02/2020
SCALES/PAPER SIZE 1:100/A3
DRAWN/CHECKED BW

PROPOSED
SIDE ELEVATION (SOUTH)
1:100

Architecture
For London
82—84
Clerkenwell Rd
London
EC1M 5RF
020 3637 4236
architecture
forlondon.com

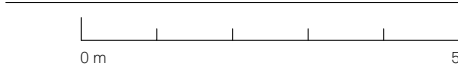
DO NOT SCALE
USE FIGURED DIMENSIONS ONLY.
ALL DISCREPANCIES TO BE VERIFIED WITH ARCHITECT PRIOR TO ORDERING OR CONSTRUCTION/EXECUTION.

SETTING OUT
CONFIRM ALL SETTING OUT WITH ARCHITECT PRIOR TO CONSTRUCTION.

- KEY
- Parapet on front elevation to be rebuilt to match height of existing parapet.
 - Existing roof level raised in the Utility Room. New EPDM roof.
 - Neighbouring garage outline, at higher level.
 - New rooflight with upstand in proposed rear elevation.
 - Proposed brick parapet to match height of existing extension.
 - Nook and bench in rear lightwell
 - Balustrade around rear lightwell
 - New green roof to proposed replacement rear extension.

- D-G-1: New timber garage screen and door with glazed elements
D-G-3: Pocket sliding timber door
D-B-1: Glazed sliding door w/ light coloured aluminium frame
W-G-1: Frameless full height glazed window with light coloured metal privacy screen.
W-G-2: Fixed glazed window w/ light coloured aluminium frame
RL-G-1: Frameless rooflight
RL-G-2: Frameless rooflight
RL-G-3: Frameless rooflight
RL-G-4: Frameless rooflight

- Existing, to be demolished
— Site boundary



PROJECT NO
Flat 1, 23 Dartmouth Park Hill 19047

DRAWING NO
PR SECTION A GA020

STATUS REVISION
PLANNING -

DATE 14/02/2020
SCALES/PAPER SIZE 1:100/A3
DRAWN/CHECKED RA/BW

Architecture
For London
82—84
Clerkenwell Rd
London
EC1M 5RF
020 3637 4236
architecture
forlondon.com

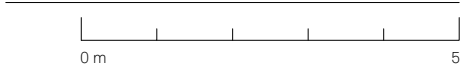
DO NOT SCALE
USE FIGURED DIMENSIONS ONLY.
ALL DISCREPANCIES TO BE VERIFIED WITH ARCHITECT PRIOR TO ORDERING OR CONSTRUCTION/EXECUTION.

SETTING OUT
CONFIRM ALL SETTING OUT WITH ARCHITECT PRIOR TO CONSTRUCTION.

- KEY
- 1. Single ply roof
 - 2. New tree in lightwell
 - 3. External lightwell 1 to basement
 - 4. Light coloured metal balustrade
 - 5. Balcony over lightwell
 - 6. Existing party wall retained

- D-G-3: Pocket sliding timber door
D-G-2: Glazed sliding door w/ light coloured aluminium frame
W-G-1: Frameless full height glazed window with light coloured metal privacy screen.
W-B-1: Frameless full height glazed window.
RL-G-3: Frameless rooflight

- Existing, to be demolished
— Site boundary



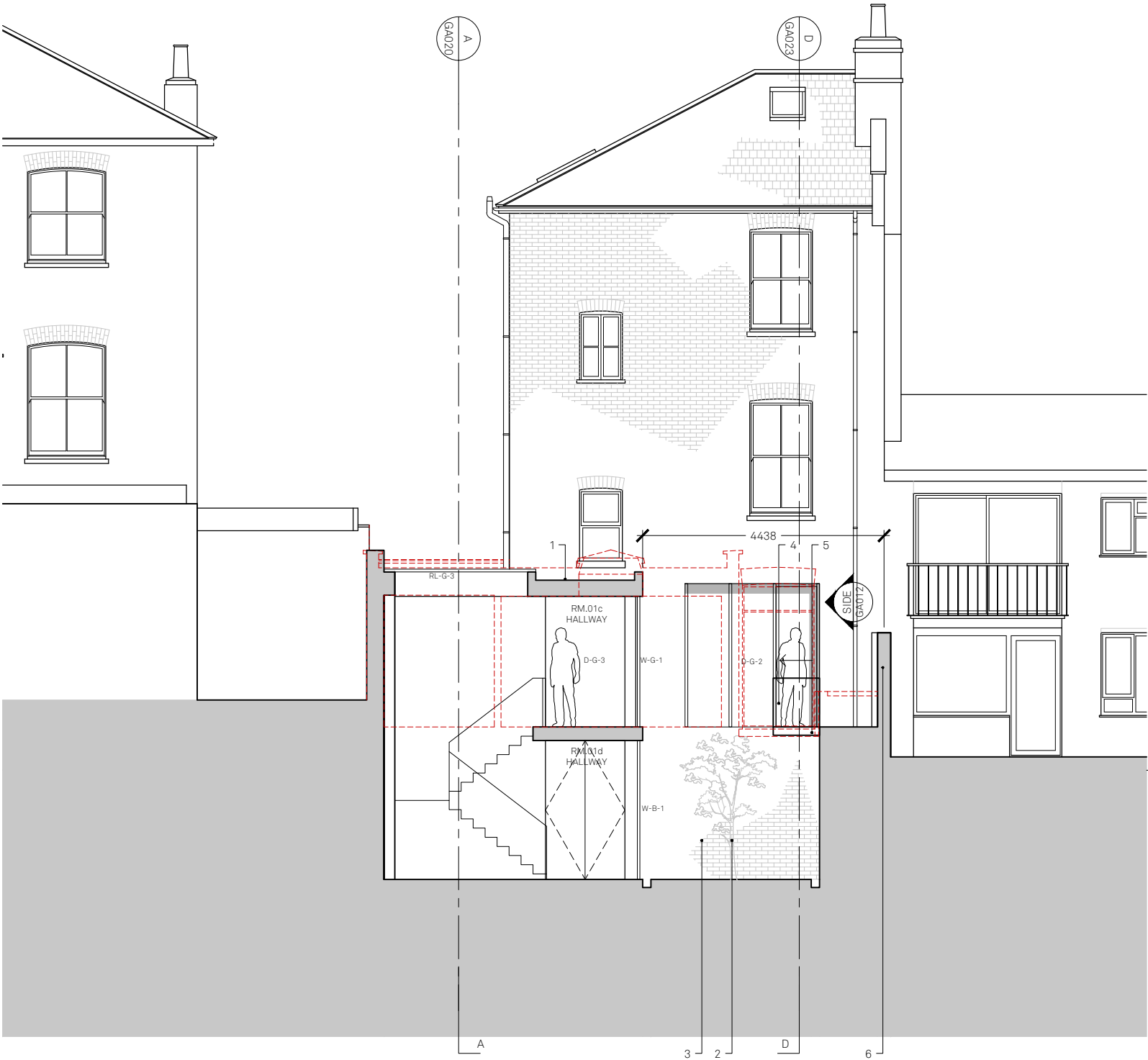
PROJECT NO
Flat 1, 23 Dartmouth Park Hill 19047

DRAWING NO
PR SECTION B GA021

STATUS REVISION
PLANNING -

DATE 14/02/2020
SCALES/PAPER SIZE 1:100/A3
DRAWN/CHECKED RA/BW

Architecture
For London
82—84
Clerkenwell Rd
London
EC1M 5RF
020 3637 4236
architecture
forlondon.com



DO NOT SCALE
USE FIGURED DIMENSIONS ONLY.
ALL DISCREPANCIES TO BE VERIFIED WITH ARCHITECT PRIOR TO ORDERING OR CONSTRUCTION/EXECUTION.

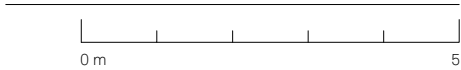
SETTING OUT
CONFIRM ALL SETTING OUT WITH ARCHITECT PRIOR TO CONSTRUCTION.

- KEY
- 1. Green roof
 - 2. Existing party wall retained

- D-G-3: Pocket sliding timber door
D-B-3: Glazed sliding door w/ light coloured aluminium frame
D-B-4: Glazed sliding door w/ light coloured aluminium frame
RL-G-4: Frameless rooflight



- Existing, to be demolished
--- Site boundary



PROJECT NO
Flat 1, 23 Dartmouth Park Hill 19047

DRAWING NO
PR SECTION C GA022

STATUS REVISION
PLANNING -

DATE 14/02/2020
SCALES/PAPER SIZE 1:100/A3
DRAWN/CHECKED RA/BW

Architecture
For London
82—84
Clerkenwell Rd
London
EC1M 5RF
020 3637 4236
architecture
forlondon.com

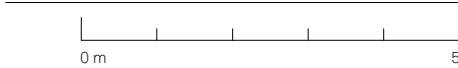
DO NOT SCALE
USE FIGURED DIMENSIONS ONLY.
ALL DISCREPANCIES TO BE VERIFIED WITH ARCHITECT PRIOR TO ORDERING OR CONSTRUCTION/EXECUTION.

SETTING OUT
CONFIRM ALL SETTING OUT WITH ARCHITECT PRIOR TO CONSTRUCTION.

- KEY
- 1. Existing boundary wall retained
 - 2. Pale brick planters with slurry finish to match extension facade
 - 3. Pale metal balustrade
 - 4. Stone planters to match stone paving
 - 5. Nook with stone bench to match paving and planters.
 - 6. Brick parapet
 - 7. Green roof
 - 8. Pale brick facade with slurry finish
 - 9. New tree in external lightwell
 - 10. Basement external lightwell

- W-G-1: Frameless full height glazed window with light coloured metal privacy screen.
- W-G-3: Fixed glazed window with light coloured aluminium frame
- W-B-1: Frameless full height glazed window
- D-G-2: Glazed sliding door with light coloured aluminium frame
- D-B-2: Glazed sliding door with light coloured aluminium frame
- D-B-3: Glazed sliding door with light coloured aluminium frame

- Existing, to be demolished
- Site boundary



PROJECT	NO
Flat 1, 23 Dartmouth Park Hill	19047

DRAWING	NO
PR SECTION D	GA023

STATUS	REVISION
PLANNING	-

DATE	14/02/2020
SCALES/PAPER SIZE	1:100/A3
DRAWN/CHECKED	BW

Architecture
For London
82—84
Clerkenwell Rd
London
EC1M 5RF
020 3637 4236
architecture
forlondon.com