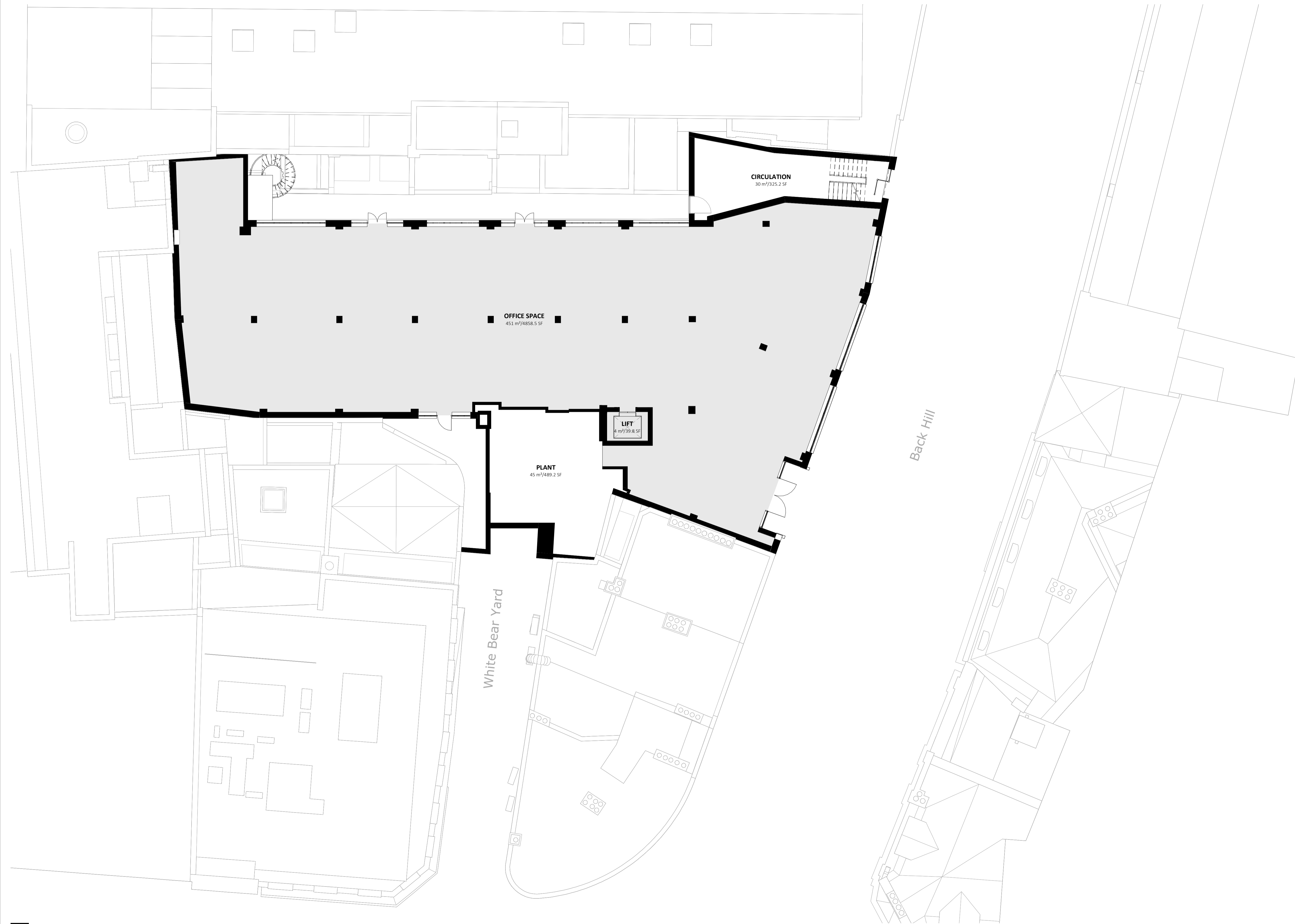


GENERAL NOTES

- Contractor must ensure that all work on site is carried out in a safe & satisfactory manner, in accordance with Health & Safety At Work Act 1974, COSHH Regulations 2002 & requirements of C.D.M.
- Structural Design shown in abeyance - refer to Structural Engineer's drawings and specifications.
- Mechanical & Electrical shown in abeyance - refer to M&E Engineer's drawings and specifications.
- All dimensions shown are to wall structure (Block/Stud) unless otherwise stated.

COLOUR LEGEND

■ SENATOR SPACE



1 Proposed Lower Ground Floor Plan
1:100