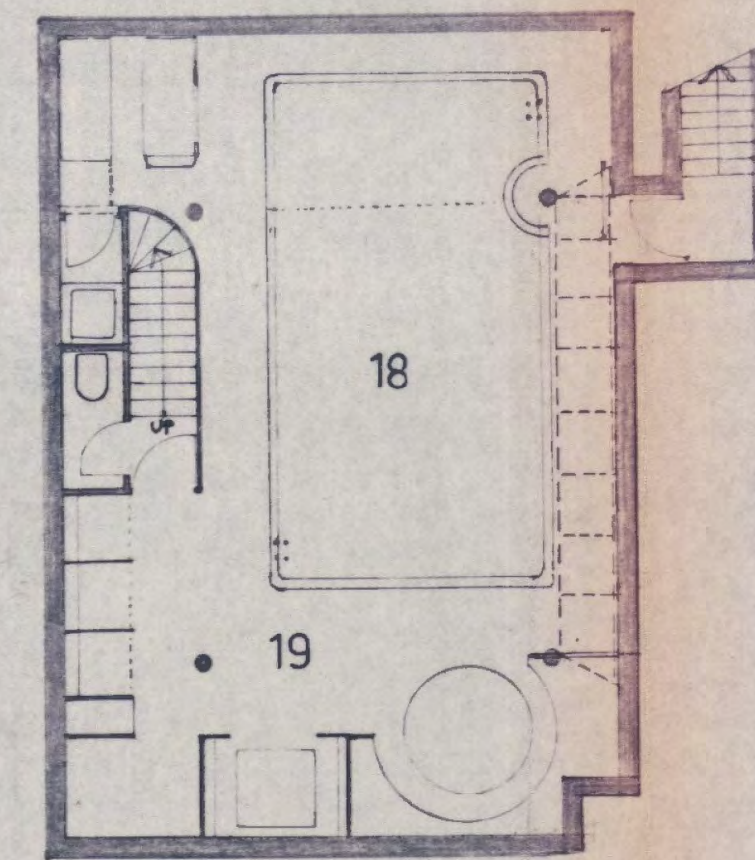


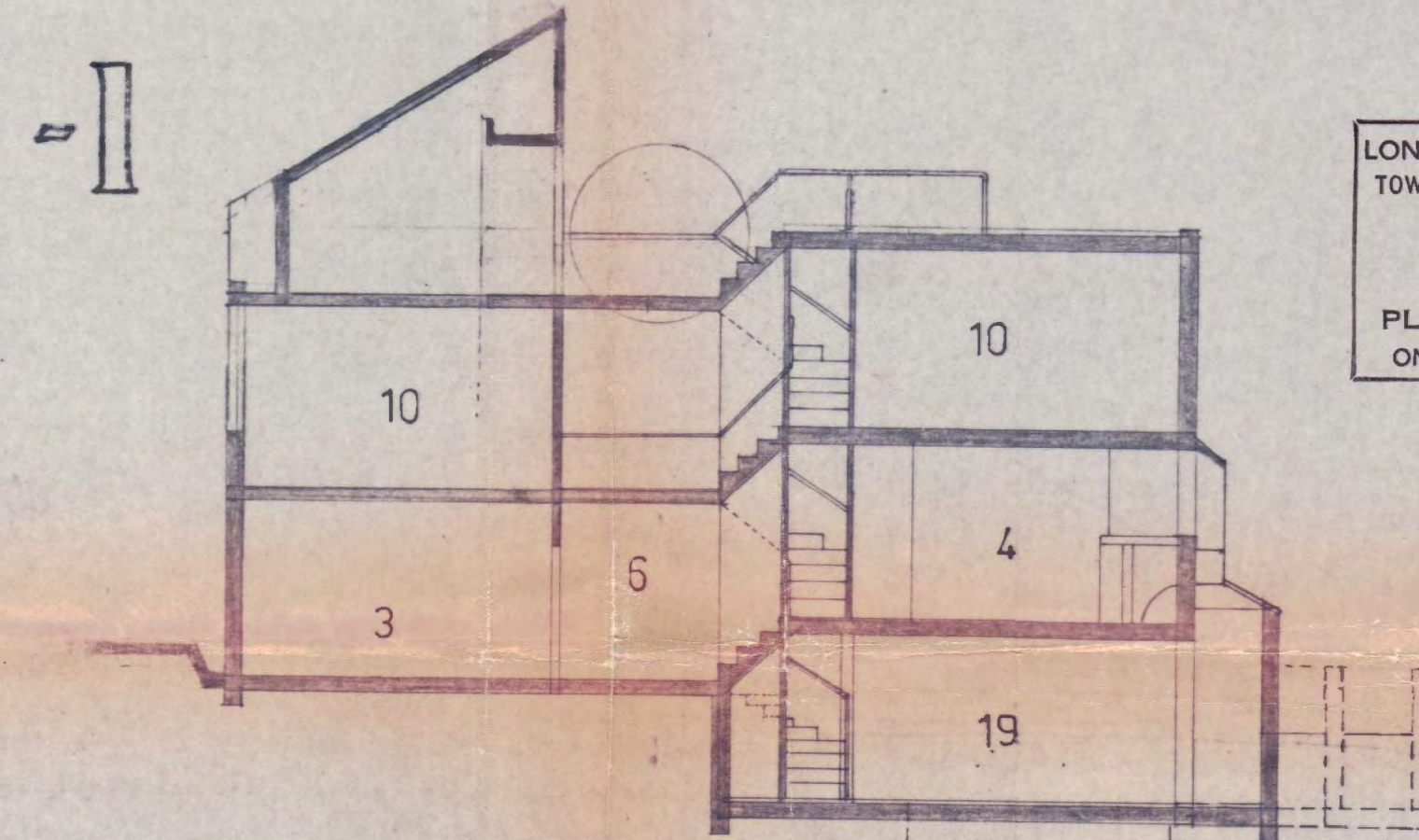
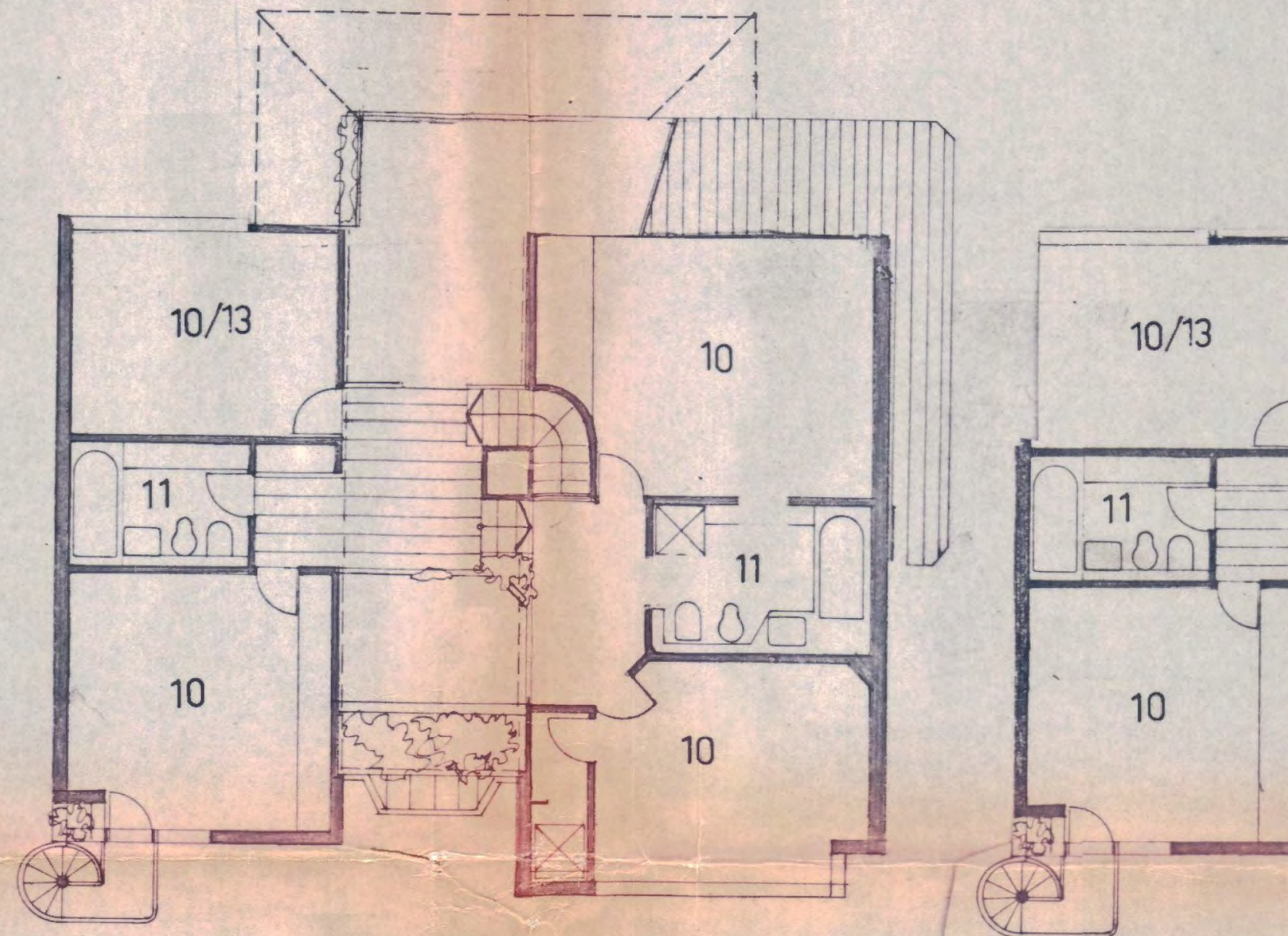
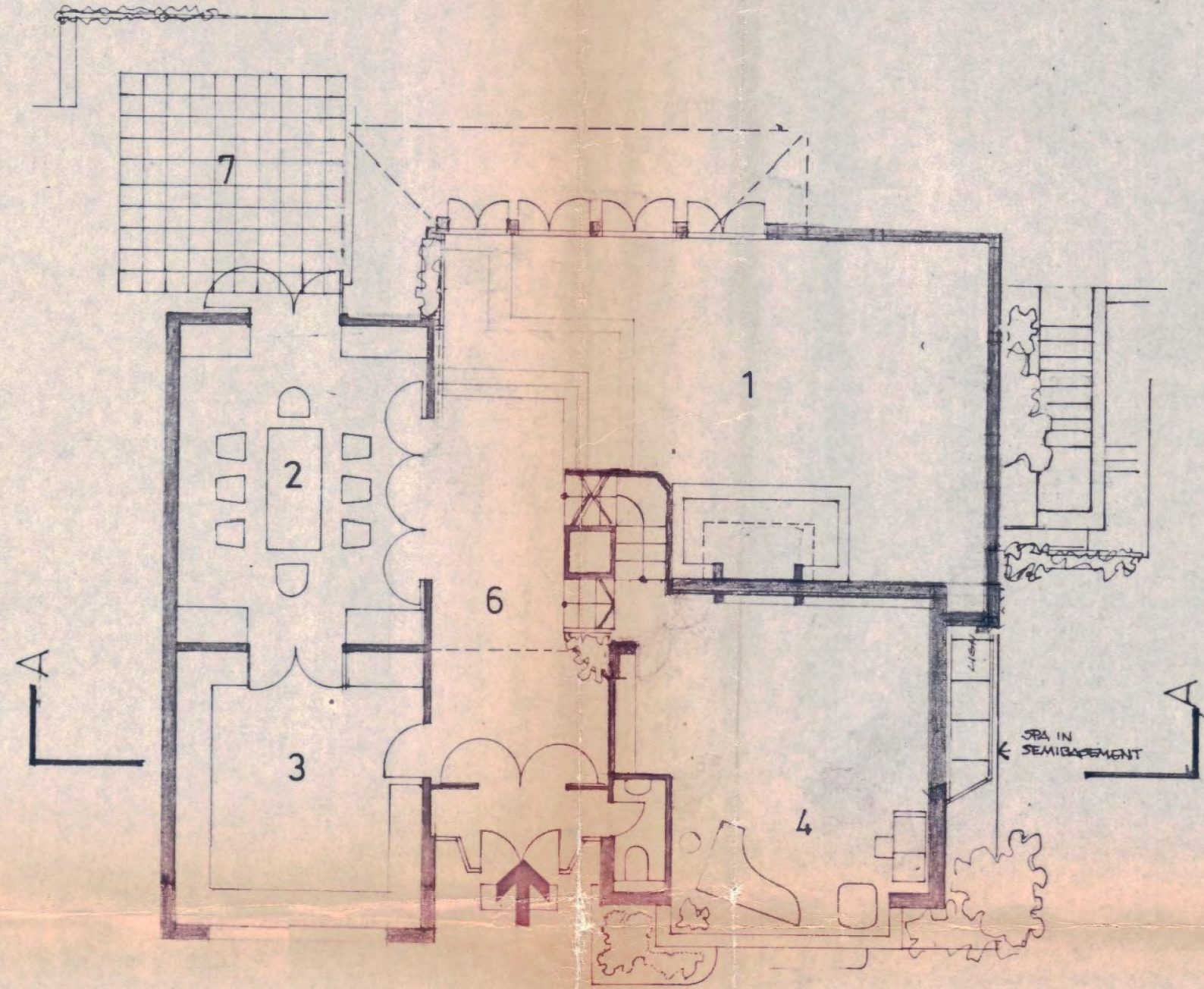
D+

1 : 1000

SP51



- 1 LIVING
- 2 DINING
- 3 KITCHEN
- 4 STUDY
- 5 TOILETS (ALTERNATIVE POSITIONS)
- 6 HALL
- 7 PATIO
- 8 ORN. GDN.
- 9 ALTERNATIVE ENTRANCES
- 10 BEDROOM
- 11 BATHROOM
- 12 DRESSING
- 13 STUDIO
- 14 SHOWER
- 15 UTILITY
- 16 GARAGE
- 17 CAR PORT (SOME HOUSES)
- 18 POOL
- 19 SPA FACILITIES



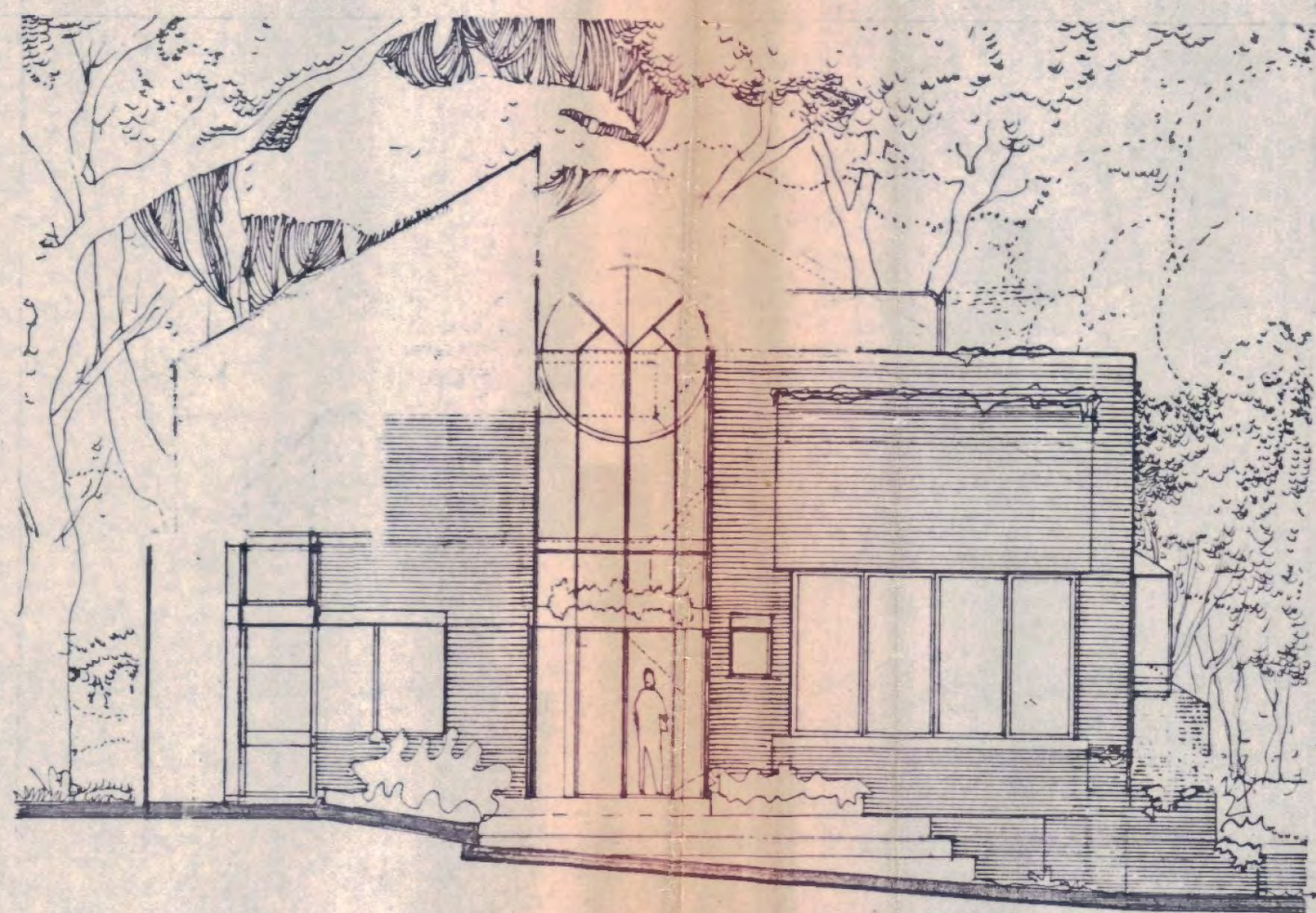
LONDON BOROUGH OF CAMDEN
TOWN AND COUNTRY PLANNING ACTS
6 APR 1982
PLANS APPROVED
ON BEHALF OF THE COUNCIL

(O)

I

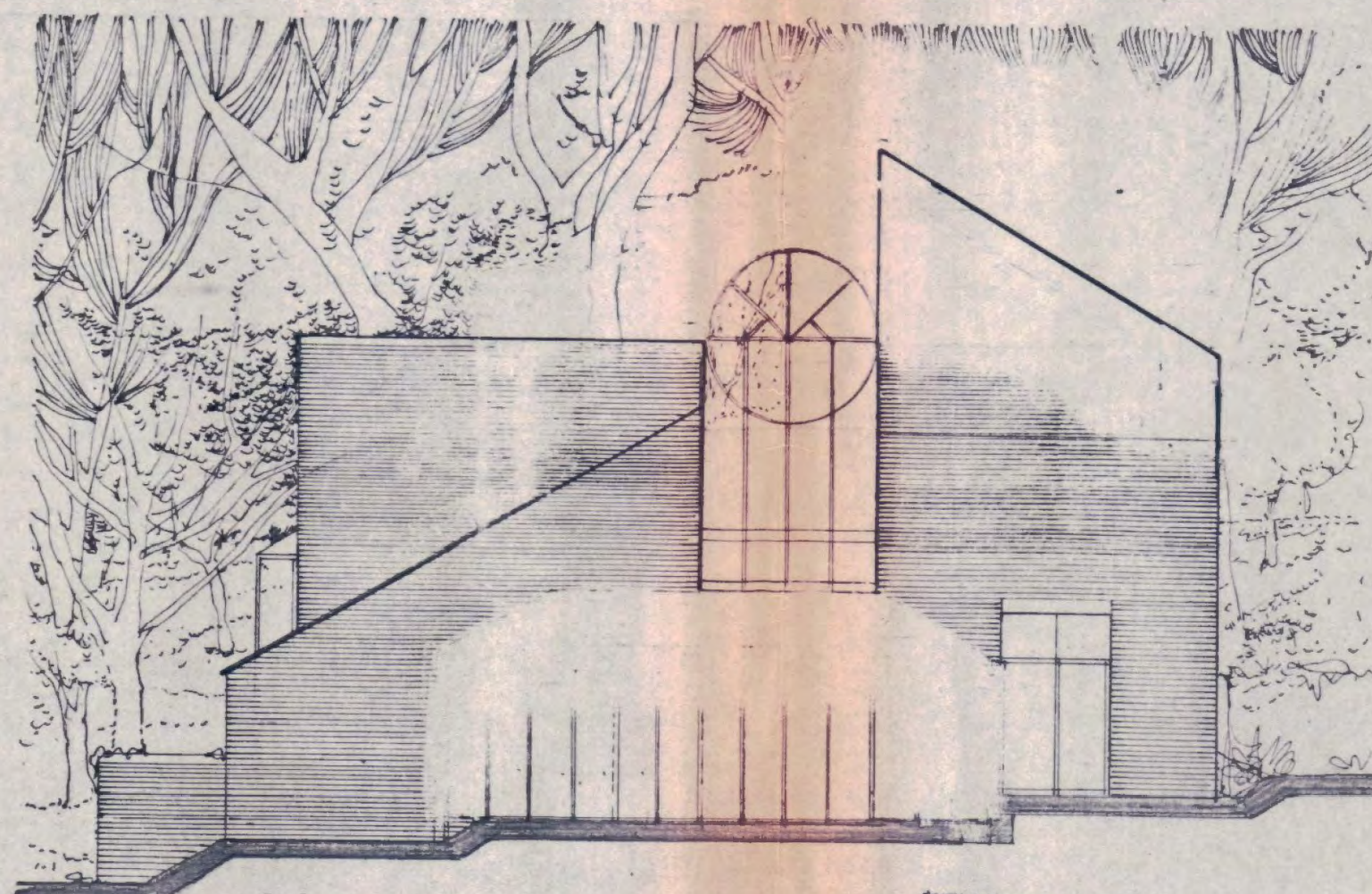
A-A

* TOP OF HALL WILL BE A GLAZED BAMBAL VENT NOT ILLUSTRATED HERE.



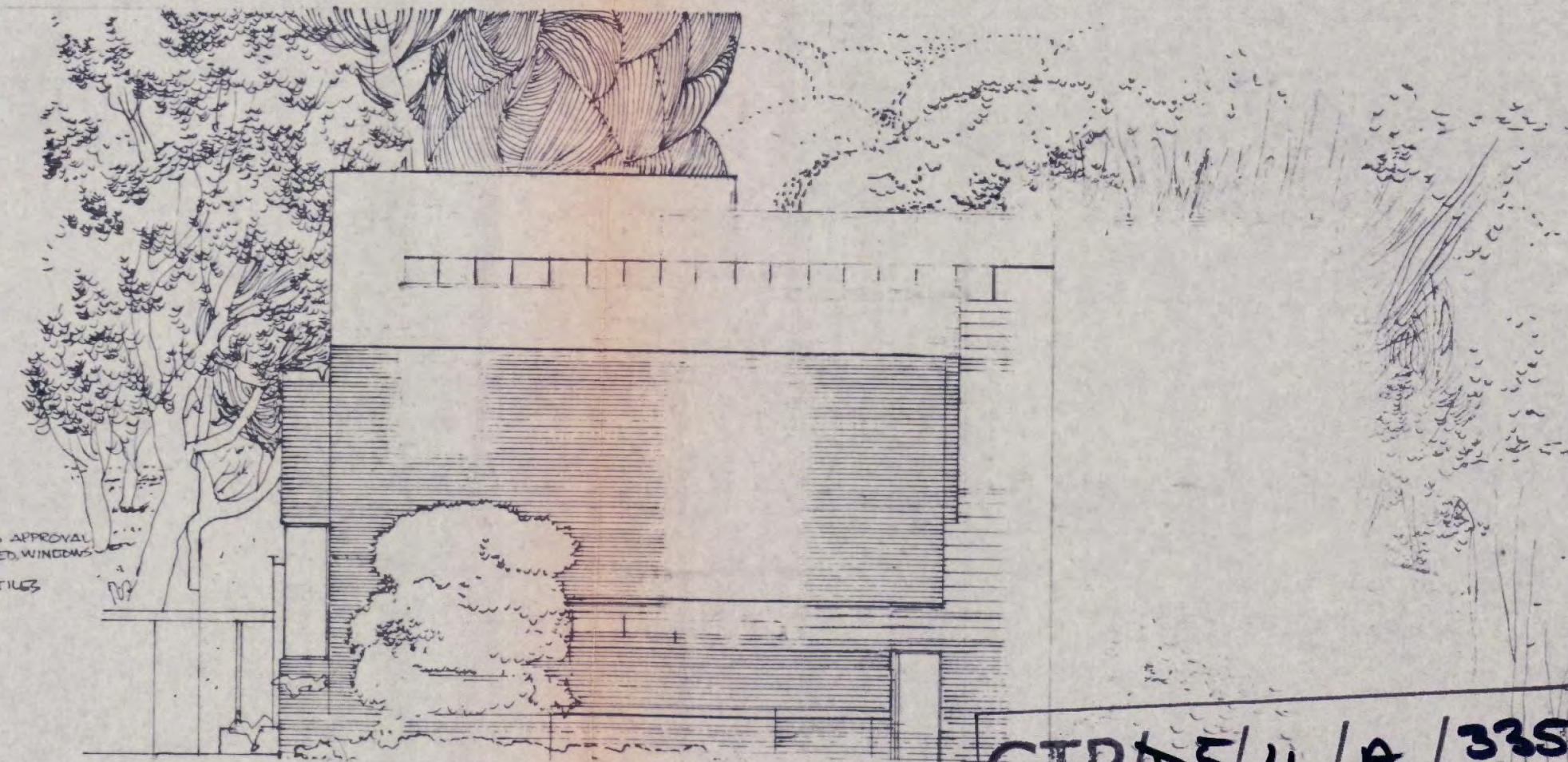
FRONT

Meeting 10/7/82



GARDEN

* THIS STRUCTURE SHOWS THE ORIGINAL DESIGN



SIDE

* FACING BRICK TO APPROVAL HARDWOOD STAINED WINDOWS AND DOORS FLAT CONCRETE TILES

CTP/05/4/A/33510(R3)

LONDON BOROUGH OF CAMDEN
TOWN AND COUNTRY PLANNING ACTS
6 APR 1982
RECOMMENDATION AGREED
ON BEHALF OF THE COUNCIL

SPEDAN TOWER
BUKHATIR INVESTMENTS LTD

© 1981

IVAN SIMOVIC RIBA DIP PLAN (AA)
Chartered Architect
13 The Chine London N10 3PX 01 583 9568