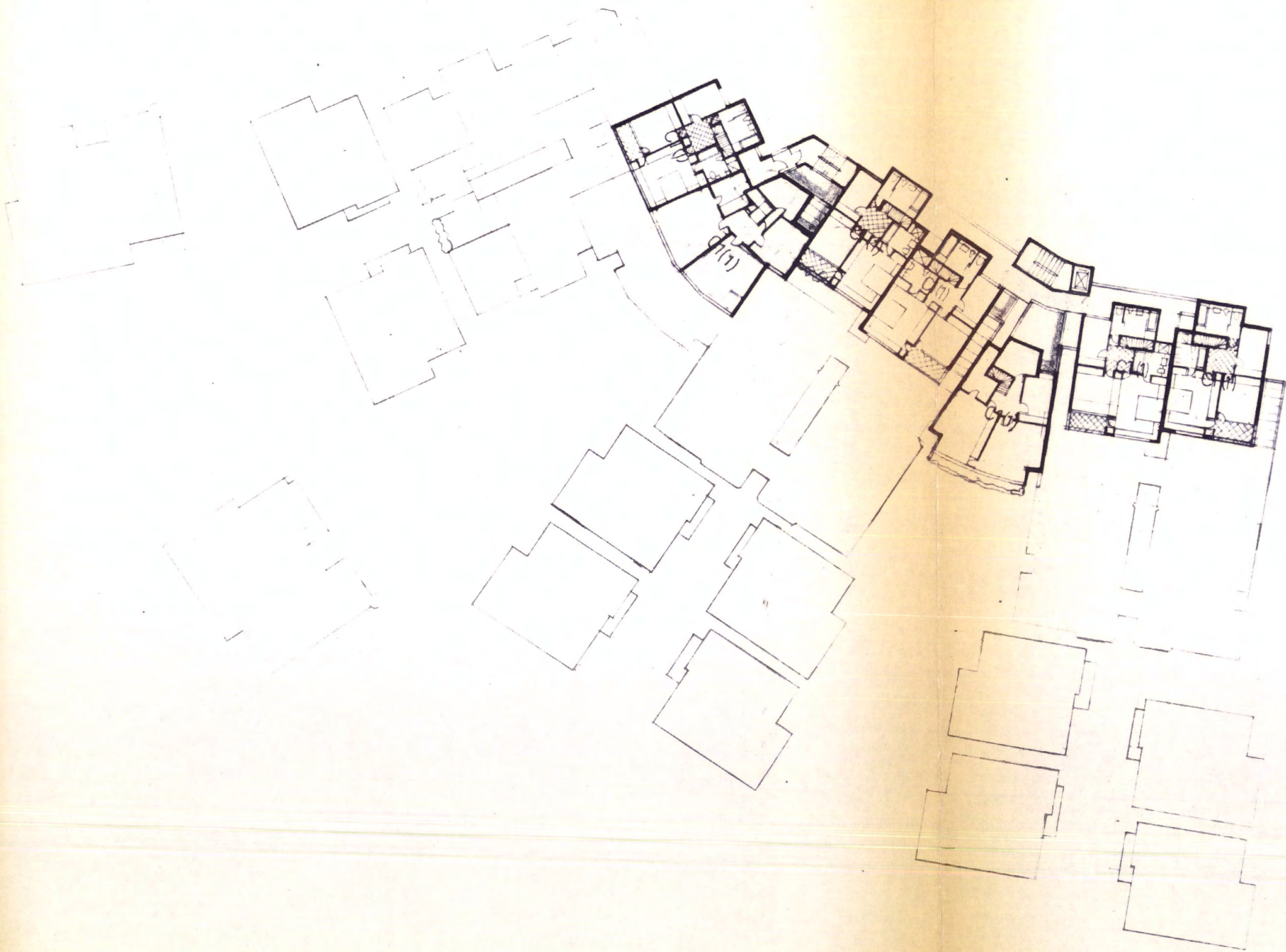
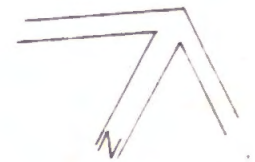


LEVEL ⑤

6
2DF5



LONDON BOROUGH OF CAMDEN
 TOWN AND COUNTRY PLANNING ACTS
 6 APR 1982
 PLANS ~~NOTIFIED~~ APPROVED
 ON BEHALF OF THE COUNCIL



LEVEL ⑤: THIS PLAN IS ILLUSTRATING A
 LARGER UNIT AT A PARTICULAR
 LEVEL AND IS BASED (ORIGINALLY)
 ON THE GENERAL LAYOUT PLAN
 NO. SP1/F1 WHICH IS THE
 MASTER LAYOUT FOR THE
 PURPOSE OF THE APPLICATION.

CTP/D5/4/A/33510/R3

SPEDAN TOWER
 BUKHATIR INVESTMENTS LTD
 BICKERDIKE ALLEN SIMOVIC-ARCHITE

© 1982 1:400
 IVAN SIMOVIC-RIBA-RIP PLAN IAN
 Chartered Architect
 12 The Grange London N10 2PX 01-833 0333