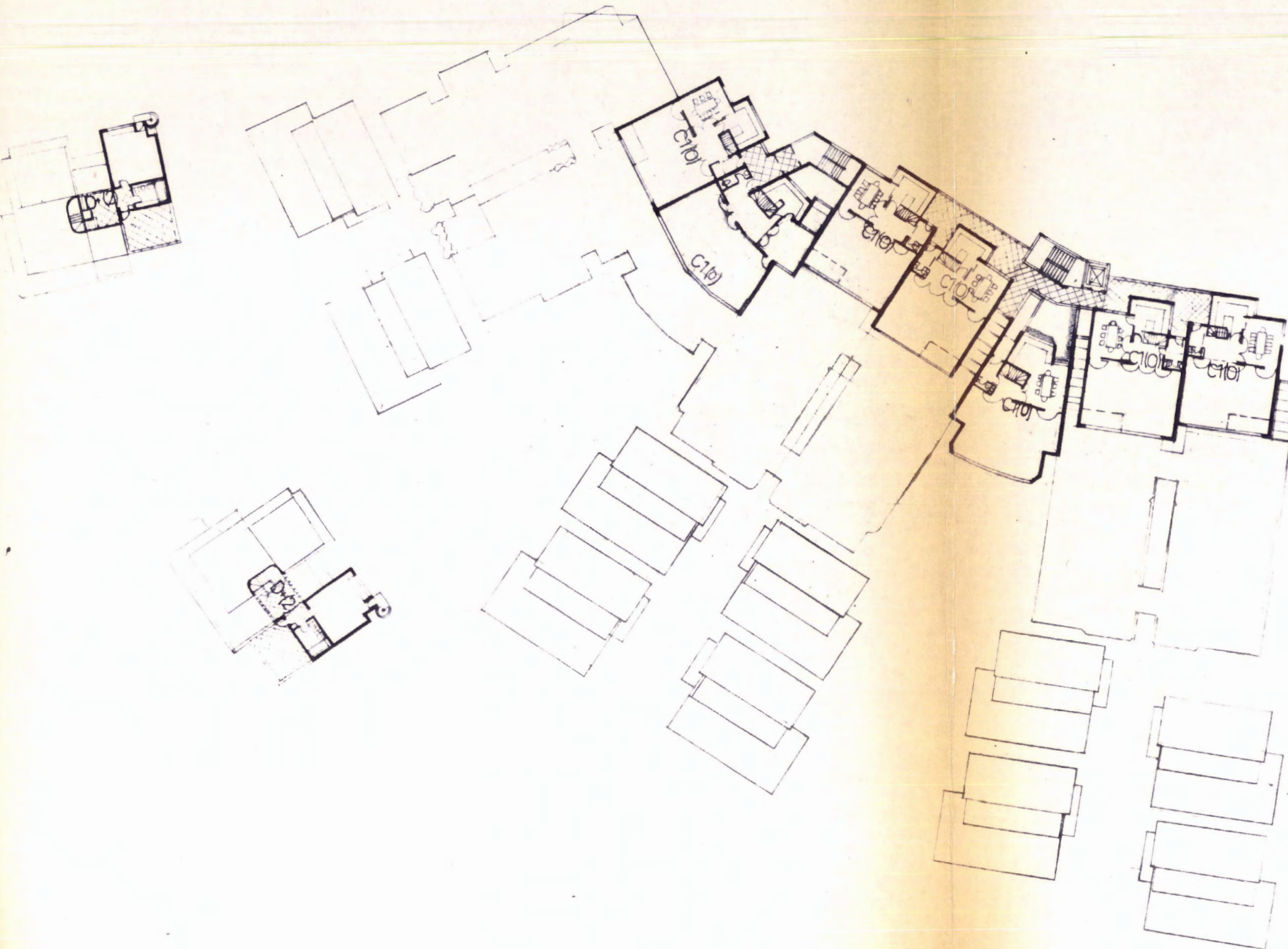
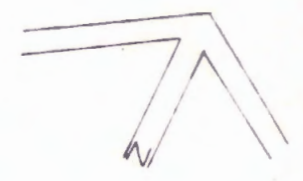


6D  
EDF4

LEVEL 4



LONDON BOROUGH OF CAMDEN  
TOWN AND COUNTRY PLANNING ACTS  
6 APR 1982  
PLANS ~~NOT APPROVED~~ APPROVED  
ON BEHALF OF THE COUNCIL



\* LEVEL 4 - THIS PLAN IS ILLUSTRATING A  
LINKED LAYOUT AT A PARTICULAR  
LEVEL AND IS BASED ON/DERIVED  
ON THE REFERENCE LAYOUT PLAN  
NO. 85719, WHICH IS THE  
LATEST LAYOUT AND THE  
PURPOSE OF THE APPLICATION.

CTP/DS/4 /A /33510(R3)

SPEDAN TOWER  
BUKHATIR INVESTMENTS LTD  
BICKERDIKE ALLEN SIMOVIC  
ARCHITECTS

© 1982 1:400

IVAN SIMOVIC RIBA DIP PLAN MA  
Chartered Architect  
12 The Giltspur London N10 3PX 0 223 2121