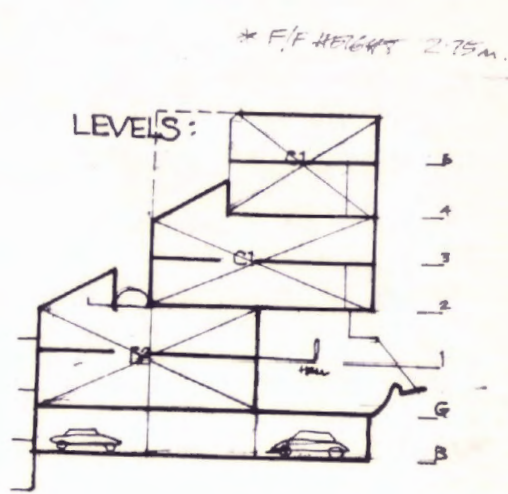
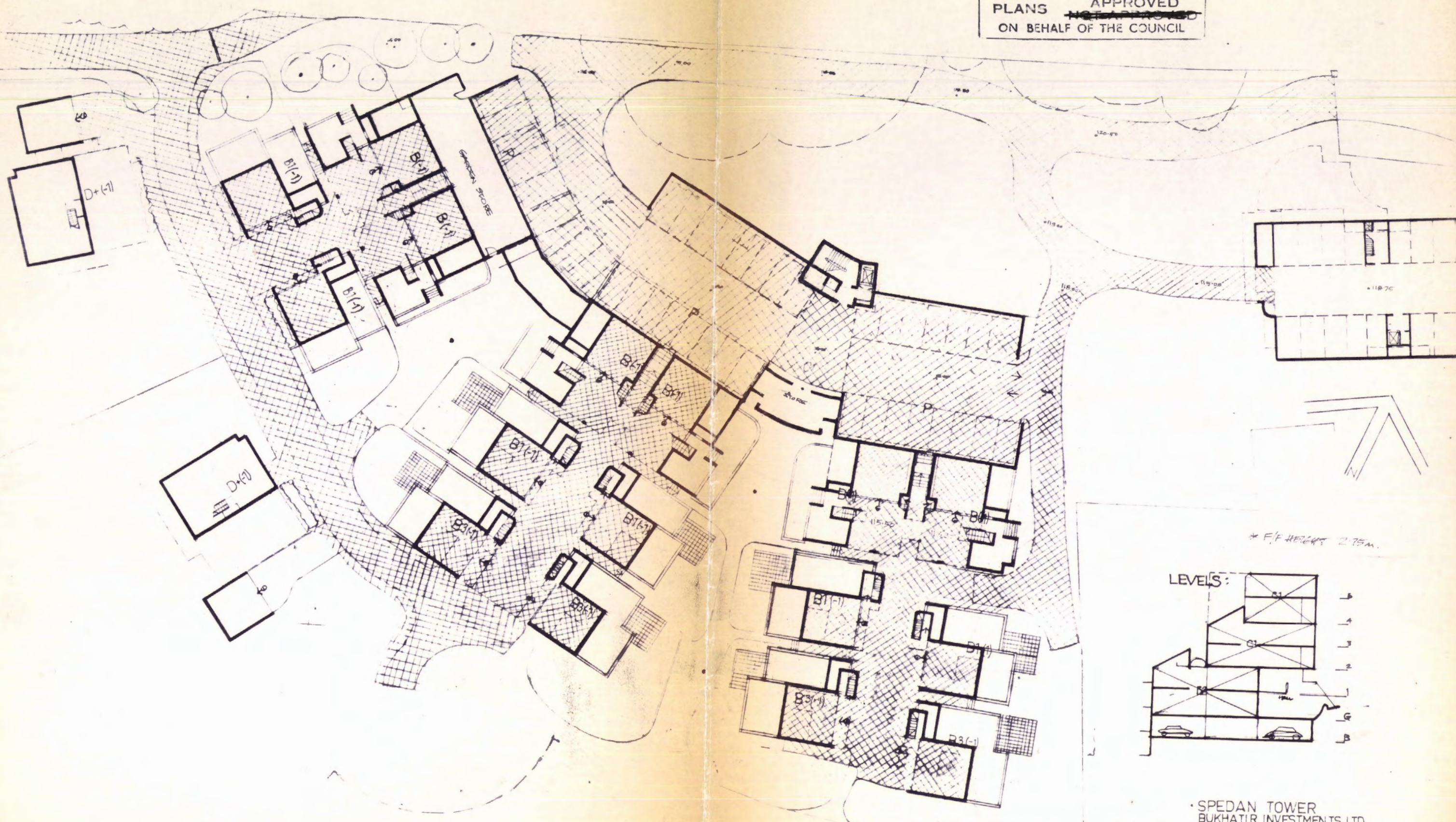


LEVEL B

LONDON BOROUGH OF CAMDEN
TOWN AND COUNTRY PLANNING ACTS
6 APR 1982
PLANS ~~NOT APPROVED~~ APPROVED
ON BEHALF OF THE COUNCIL

EDFI



SPEDAN TOWER
BUKHATIR INVESTMENTS LTD.
BICKERDIKE ALLEN SIMOVIC ARCHITECTS

CTP/D5/4/A/335/10 (R3)

1:400
IVAN SIMOVIC RIBA DIP PLAN MGR
Chartered Architect
12 The Drive London N10 2PX © 1982 0100