

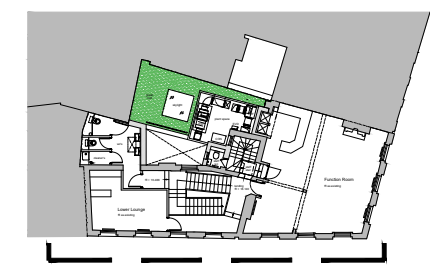


The use of this data by the recipient acts as an agreement of the following statements. Do not use this data if you do not agree with any of the following statements:-

All drawings are based upon site information supplied by third parties and as such their accuracy cannot be guaranteed. All features are approximate and subject to clarification by a detailed topographical survey, statutory service enquiries and confirmation of the legal boundaries.

Do not scale the drawing. Use figured dimensions in all cases. Check all dimensions on site.

Report any discrepancies in writing to Palmer Lunn Architects before proceeding.



- 1 repaired glazed bricks
- 2 reinstated corner entrance
- 3 replacement windows to match originals
- 4 generally, modern services de-cluttered from facade
- 5 low level ventilation louvres for gas intake

| Rev | Description         | Date     | Drn | Chk |
|-----|---------------------|----------|-----|-----|
| P01 | Issued for Planning | 03.02.20 | AMe | APa |

Status  
**PLANNING**

Client  
Bohemia Club

Project  
The Apple Tree Public House  
45 Mount Pleasant  
London WC1X 0AE

Drawing  
North Elevation  
as Proposed

| Project No. | Drawing No. | Revision |
|-------------|-------------|----------|
| 18003       | BHM-A-P-061 | P01      |
| Scale @ A3  | Drawn By    |          |
| 1:100       | AMe         |          |

palmer lunn architects  
www.palmerlunn.com

8-10 WARNER STREET

THE SITE

MOUNT PLEASANT

