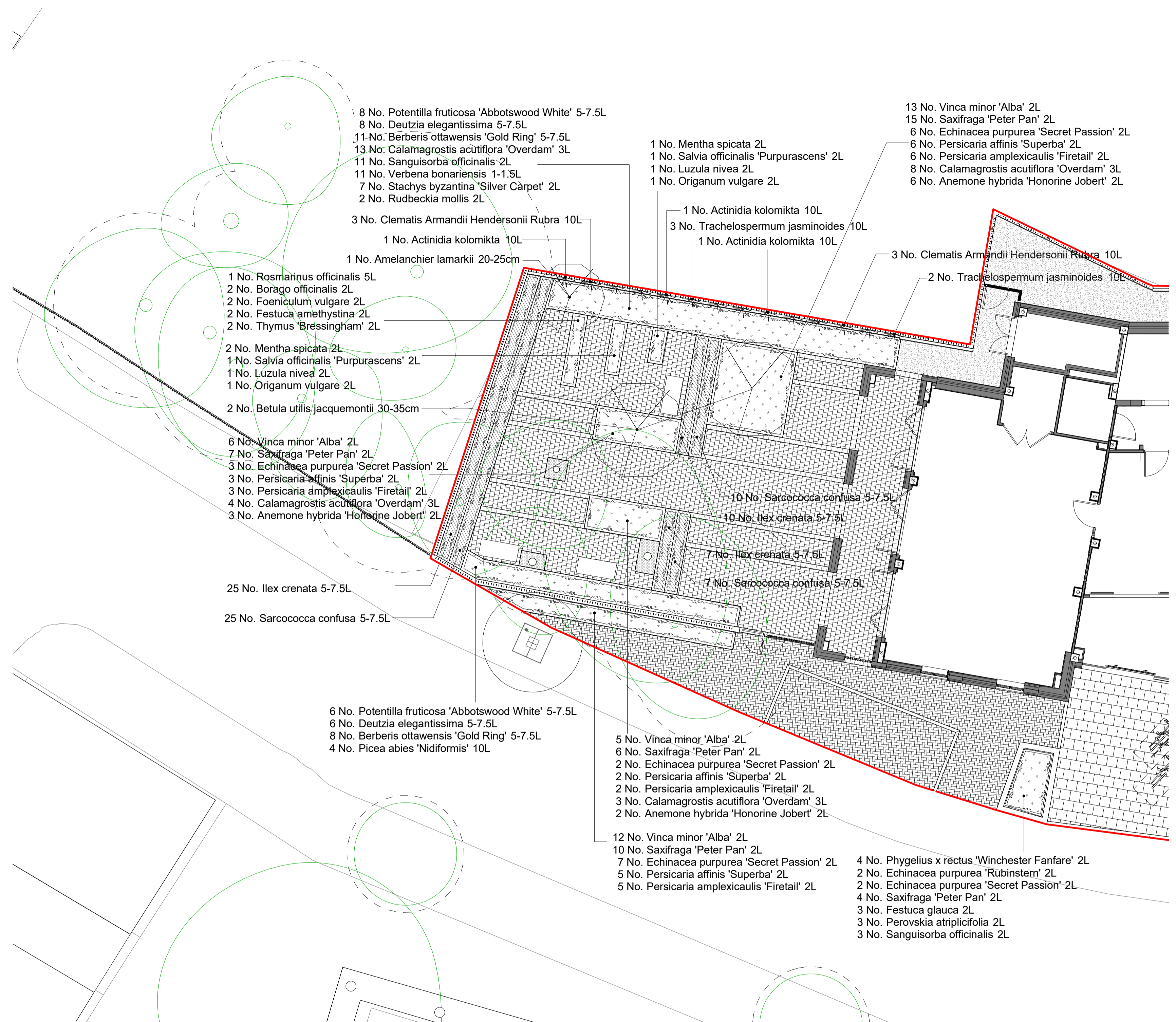


The contractor is responsible for checking dimensions, tolerances and references. Any discrepancy to be verified with the Architect before proceeding with the works. Where an item is covered by drawings to different scales the larger scale drawing is to be worked to.

Do not scale drawing. Figured dimensions to be worked to in all cases.

CDM REGULATIONS 2015. All current drawings and specifications for the project must be read in conjunction with the Designer's Hazard and Environment Assessment Record

All intellectual property rights reserved.



Planting Schedule - Sheet 2

Trees				
Number	Species	Specification	Girth	Density
2 No.	Betula utilis jacquemontii	RB	30-35cm	Counted
1 No.	Amelanchier lamarkii	Multi-stemmed : C	20-25cm	Counted

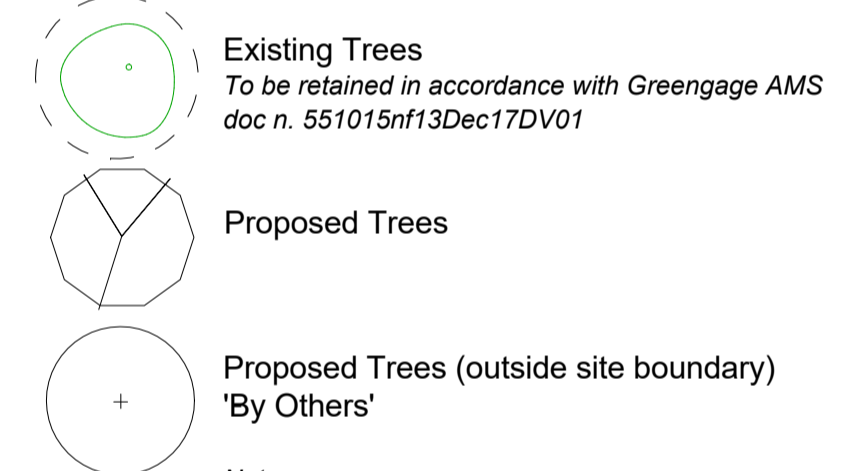
Shrubs				
Number	Species	Specification	Pot Size	Density
2 No.	Salvia officinalis 'Purpurascens'	Full pot	2L	5/m ²
14 No.	Potentilla fruticosa 'Abbotswood White'	C	5-7.5L	3/m ²
14 No.	Deutzia elegantissima	C	5-7.5L	3/m ²
19 No.	Berberis ottawensis 'Gold Ring'	C	5-7.5L	4/m ²
4 No.	Picea abies 'Nidiformis'	C	10L	2/m ²
1 No.	Rosmarinus officinalis	Full pot	5L	3/m ²
2 No.	Thymus 'Bressingham'	Full pot	2L	7/m ²
24 No.	Vinca minor 'Alba'	Full pot	2L	6/m ²
3 No.	Perovskia atriplicifolia	Full pot	2L	5/m ²

Herbaceous				
Number	Species	Specification	Pot Size	Density
2 No.	Luzula nivea	Full Pot	2L	7/m ²
28 No.	Calamagrostis acutiflora 'Overdam'	Full Pot	3L	5/m ²
11 No.	Verbena bonariensis	Full Pot	1-1.5L	6/m ²
7 No.	Stachys byzantina 'Silver Carpet'	Full Pot	2L	4/m ²
2 No.	Rudbeckia mollis	Full Pot	2L	1/m ²
32 No.	Saxifraga 'Peter Pan'	Full Pot	2L	7/m ²
13 No.	Echinacea purpurea 'Secret Passion'	Full Pot	2L	5/m ²
11 No.	Persicaria affinis 'Superba'	Full Pot	2L	5/m ²
11 No.	Persicaria amplexicaulis 'Firetail'	Full Pot	2L	5/m ²
11 No.	Anemone hybrida 'Honorine Jobert'	Full Pot	2L	5/m ²
4 No.	Phytolium x rectus 'Winchester Fanfare'	Full Pot	2L	5/m ²
2 No.	Echinacea purpurea 'Rubinstern'	Full Pot	2L	5/m ²
3 No.	Festuca glauca	Full Pot	2L	6/m ²

Climbers		
Number	Species	Density
5 No.	Trachelospermum jasminoides	Counted
6 No.	Clematis Armandii Hendersonii Rubra	Counted
3 No.	Actinidia kolomikta	Counted

Wildflowers		
Number	Species	Specification Density
14 No.	Sanguisorba officinalis	Full pot 6/m ²

Grasses			
Number	Species	Specification	Pot Size Density
2 No.	Festuca amethystina	Full Pot	2L 7/m ²



Notes:
 Final tree species and specification (outside site boundary) to be confirmed and agreed with London Borough of Camden. All trees and tree pits to be installed by London Borough of Camden to meet specifications.

Rev	Date	Description	Dwn	Ckd
A	28/01/20	Construction Issue. Revised drawing based on client's comments	ZE	BS
-	13/12/19	Preliminary Construction	MF	BS

CHARLIE RATCHFORD
 Planting Plan_Sheet 2

AL4796C-3202 REV A

Construction

Drawn MF Checked BS Date 12/12/19 Scale @ A1 1 : 100

