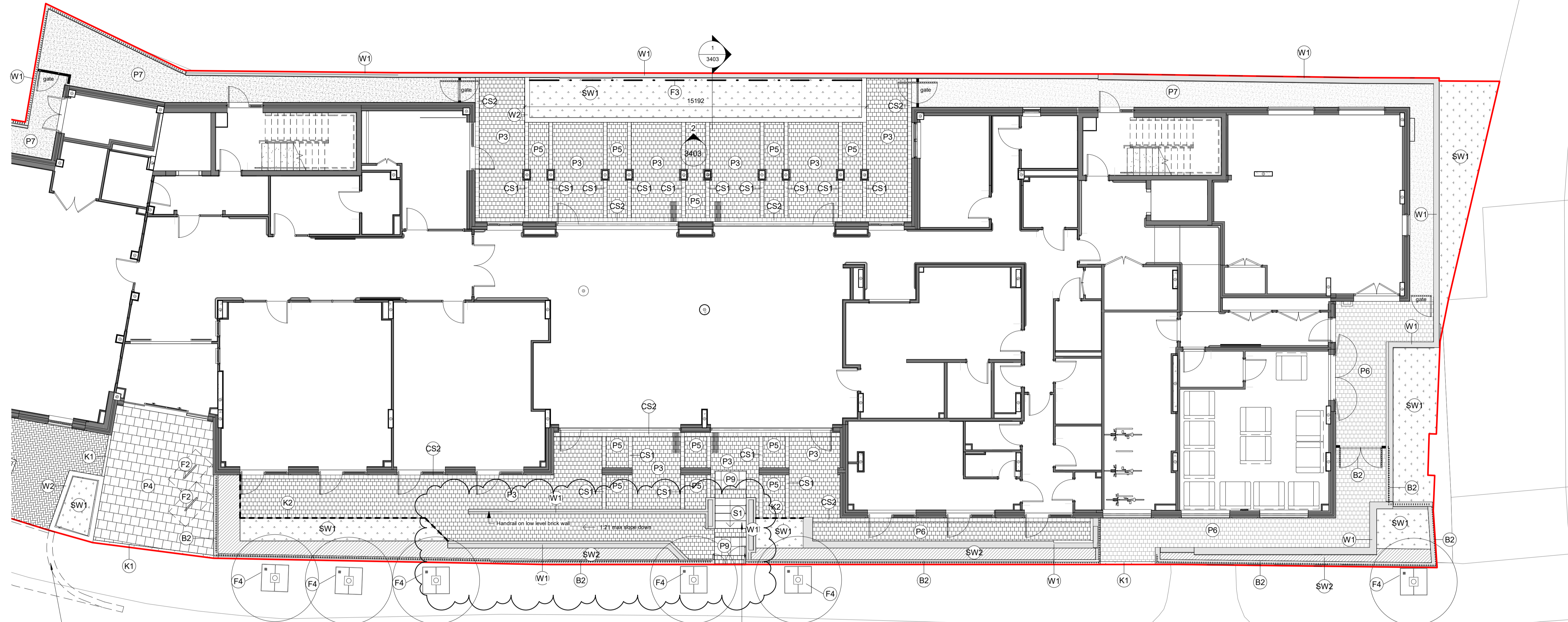


The contractor is responsible for checking dimensions, tolerances and references. Any discrepancy to be verified with the Architect before proceeding with the works. Where an item is covered by drawings to different scales the larger scale drawing is to be worked to.

Do not scale drawing. Figured dimensions to be worked to in all cases.

CDM REGULATIONS 2015. All current drawings and specifications for the project must be read in conjunction with the Designer's Hazard and Environment Assessment Record





All intellectual property rights reserved.



Refer to Richard Jackson S278 drawing for works outside boundary

Steps to include galvaneised powder coated handrails.

Refer to Architect's drawing AA4796C/3011 for steps & handrail details.

-  PROPOSED TREE
-  EXISTING TREE  
To be retained in accordance with Greengage AMS doc n. 551015nf13Dec17DV01
-  K2 - STEEL EDGING
-  F3 - GREEN WALL

KEY	
B1	BOUNDARY TO GARDEN Boundary railing to architect's details.
B2	FRONT BOUNDARY Front boundary railing and gates to architect's details.
CS1	PERMEABLE BLOCKS TO BANDING Hydropave Tegula Duo, size 208x173mm; 173x173mm; 60mm thickness. Colour: Charcoal. Single stretcher course. By Tobermore or similar approved.
CS2	PERMEABLE BLOCKS TO BANDING Hydropave Tegula Duo, size 208x173mm; 173x173mm; 60mm thickness. Colour: Heather. Single stretcher course. By Tobermore or similar approved.
CS3	CONCRETE BLOCKS TO BANDING Sienna 60mm, size 208x173x60mm. Colour: Silver. Soldier course. By Tobermore or similar approved.
F1	TIMBER GARDEN BENCH Windsor 3 Seater Teak Garden Bench. Size: W150 x D65 x H92cm. Fixing to manufactory specification. By Cyan or similar approved.
F2	CYCLE STAND Stainless steel Sheffield Cycle stands, 800mm high. Grade 304 stainless steel, root fixed to manufactory specification. Product Code: BXMW/GS/Sheffield-Stand. By Broxap or similar approved.
F3	GREEN WALL Jakob combination of stainless steel ropes, rods and mesh. By Jakob or similar approved. Refer to drawing AL4796C-3403 for details.
F4	TREE AND TREE PIT OUTSIDE BOUNDARY To be installed by London Borough of Camden and to meet London Borough of Camden's specifications.
K1	FLUSH KERB 125x150mm kerb laid flush. To Engineer detail.
K2	STEEL EDGING AluExcel 100mm Edging. Size: 100mm height, 2500mm length, 4mm thickness. By Kinley Systems or similar approved.
P1	PERMEABLE BLOCK PAVING - VEHICULAR LOADING Hydropave Fusion, size 200x100x80mm. Colour: Silver. Laid: 90 herringbone bond. By Tobermore or similar approved.
P2	PERMEABLE BLOCK PAVING - VEHICULAR LOADING Hydropave Tegula, size 240x120x80mm. Colour: Heather. Laid: 90 herringbone bond. By Tobermore or similar approved.
P3	PERMEABLE BLOCK PAVING Hydropave Tegula Duo, size 208x173mm; 173x173mm; 60mm thickness. Colour: Heather. Laid: stretcher bond. By Tobermore or similar approved.
P4	PERMEABLE FLAG PAVING Hydropave Mayfair Flags, size 400x400x65mm. Colour: Graphite. Laid: stretcher bond. By Tobermore or similar approved.
P5	PERMEABLE BLOCK PAVING Hydropave Sienna Duo, 208x173mm; 173x173mm; 60mm. Colour: Silver. Laid: stretcher bond. By Tobermore or similar approved.
P6	CONCRETE BLOCK PAVING Sienna, size 208x173x60mm. Colour: Silver. Laid: stretcher bond. By Tobermore or similar approved.
P7	RESIN BOUND GRAVEL SureSet resin bound paving. Size: 3mm, Colour 'Golden Pearl' or similar approved.
P8	GRANITE CHIPPINGS 20mm loose granite chippings, colour: pink and grey.
P9	TACTILE FLAGS Natural Hazard Warning tactile flags, size: 400x400x50mm, colour: natural. By Tobermore or similar approved.
S1	CONCRETE STEPS Mayfair Step Flags with Delineation Strip, 400x400x40mm, colour: Silver Flag with Black Strip. By Tobermore or similar approved.
SW1	PLANTING MIX Please refer to Planting Plan for details, drawing AL4796C_3201 and AL4796C_3202
SW2	HEDGE Please refer to Planting Plan for details, drawing AL4796C_3201 and AL4796C_3202
W1	Proposed structural retaining wall to engineer details
W2	450 BRICK PLANTER 450mm high brick wall. Brick to be stretcher bond with brick on edge copping. Brick to match building proposals.

**NOTES:**

Boundary Railing (B1) to be set out on site to avoid existing trees. Refer to arboricultural statement for specifications.

External metal works to architect's details.

Refer to Arboricultural Method Statement for works around existing trees, Doc n. 551015nf13Dec17DV01

Refer to Richard Jackson engineer drawings for external levels design and drainage layout.

Rev	Date	Description	MF	BS	Dwn	Ckd
A	28/01/20	Construction Issue. Revised drawing based on client's comments	ZE	BS		
-	13/12/19	Preliminary Construction				

**CHARLIE RATCHFORD**  
Landscape GA\_Sheet 1

**AL4796C-3101** **REV A**  
Construction  
Drawn MF Checked BS Date 10/12/19 Scale @ A1 1:100