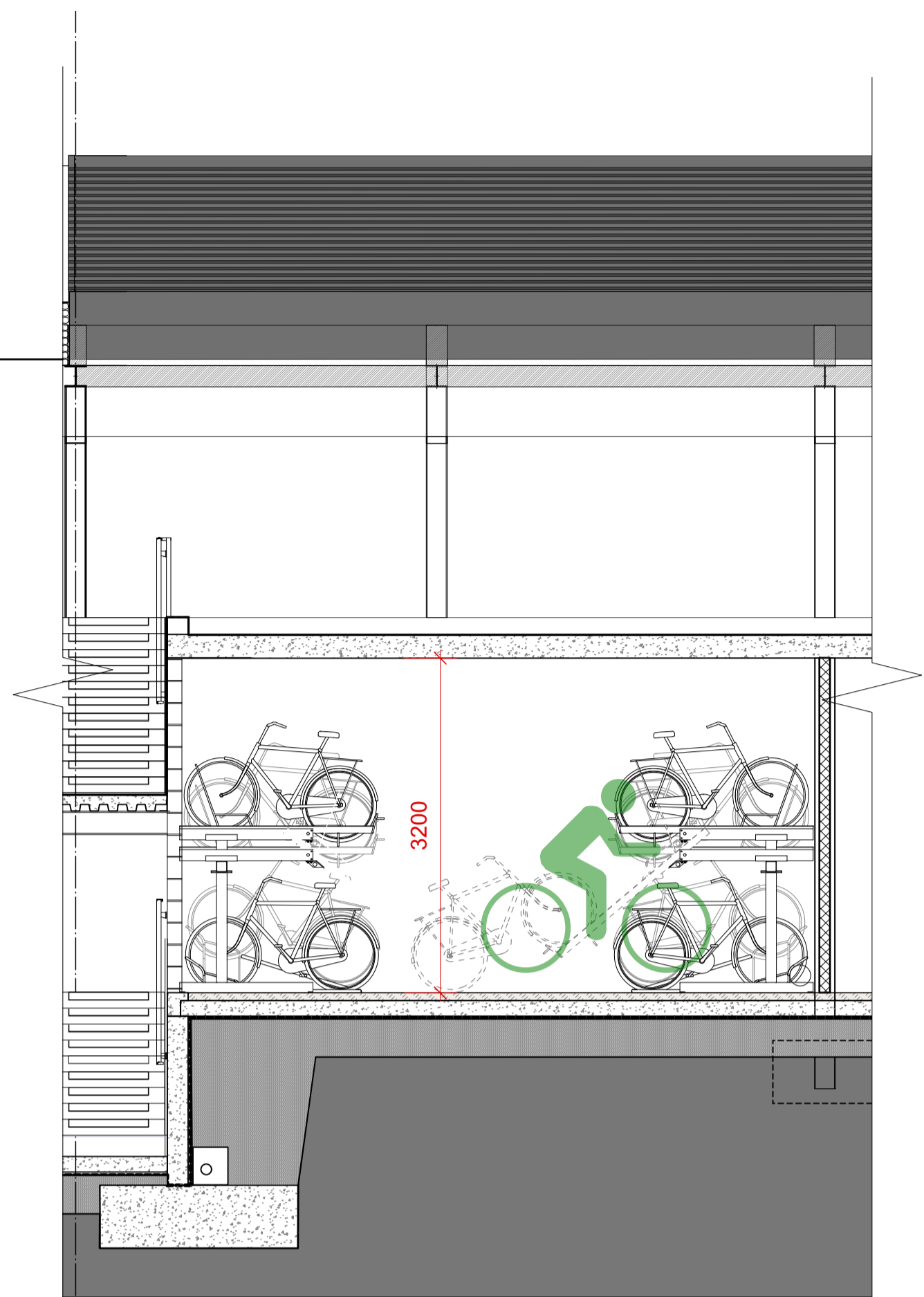


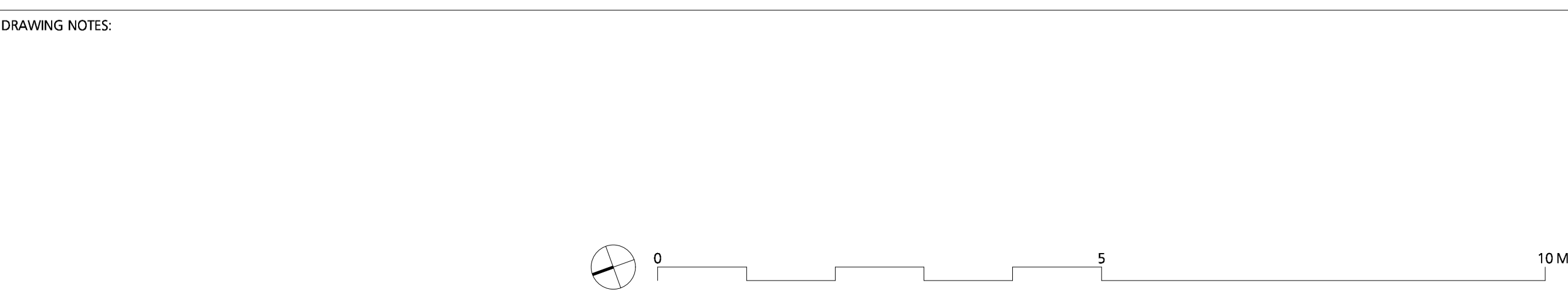


- TWO-TIER CYCLE RACK - TO CYCLE STORE**
- Metal two-tier cycle parking rack as indicated on the plan and section AA, comprising;
 - Manufacturer: Falco UK Ltd
 - Product: FalcoLevel
 - Quantity: To store 36no. cycles.
 - Dimensions: As manufacturers' standard. Inclusive of 2m loading zone and 2.6m head height.



- CYCLE RACK HOOP**
- Metal semi-vertical cycle parking rack as indicated on the design drawings, comprising;
 - Manufacturer: Falco UK Ltd
 - Product: Sheffield Stand) 02.008.015K
 - Quantity: To store 6no. in courtyard
 - Dimensions: As manufacturers' standard. Ø41.5mm, width 900mm, overall height 800mm on base plates Ø110x5mm.

DRAWING NOTES:
 All dimensions to be checked on site prior to commencement of any works, and/or preparation of any shop drawings.
 Sizes of and dimensions to any structural elements are indicative only. See structural engineers drawings for actual sizes/dimensions.
 Sizes of and dimensions to any service elements are indicative only. See service engineers drawings for actual sizes and dimensions.
 This drawing to be read in conjunction with all other Architect's drawings, specifications and other Consultants' information.
 All proprietary systems shown on this drawing are to be installed strictly in accordance with the Manufacturers/Suppliers recommended details.
 Any discrepancies between information shown on this drawing and any other contract information or manufacturers/suppliers recommendations is to be brought to the attention of the Architect.
 DO NOT SCALE FROM THIS DRAWING.



1	PLANNING CONDITION	29/01/2020
STATUS	REVISION	DATE

DRAWING		Cycle Parking Details	
SCALE	1:50 @ A1 (1:100 @ A3)	DRAWING FILE REF	1014-GA-Floor Plans
DATE	May 2017	DRAWN BY	BGY
DWG No.	1014-GA-00- bikes	REVISION	P1
DRAWING STATUS		PLANNING	

Buckley Gray Yeoman	
Studio 4.04 The Tea Building 56 Shoreditch High Street London E1 6JJ T: 020 7033 9913 F: 020 7033 9914	
CLIENT	CBRE Global Investors
PROJECT	Studio B, Fortess Grove, Kentish Town.

Information contained on this drawing is the sole copyright of Buckley Gray Yeoman and is not to be reproduced without their permission.