

Notes:

- Do not scale off this drawing for purposes other than in connection with the planning application.
- EPR Architects accepts no liability for use of this drawing by parties other than the party for whom it was prepared or for purposes other than those for which it was prepared.
- The record information contained in this drawing is issued for information purpose only and is subject to confirmation on site. EPR accepts no liability for any losses however incurred arising out of or in connection with use of the information.

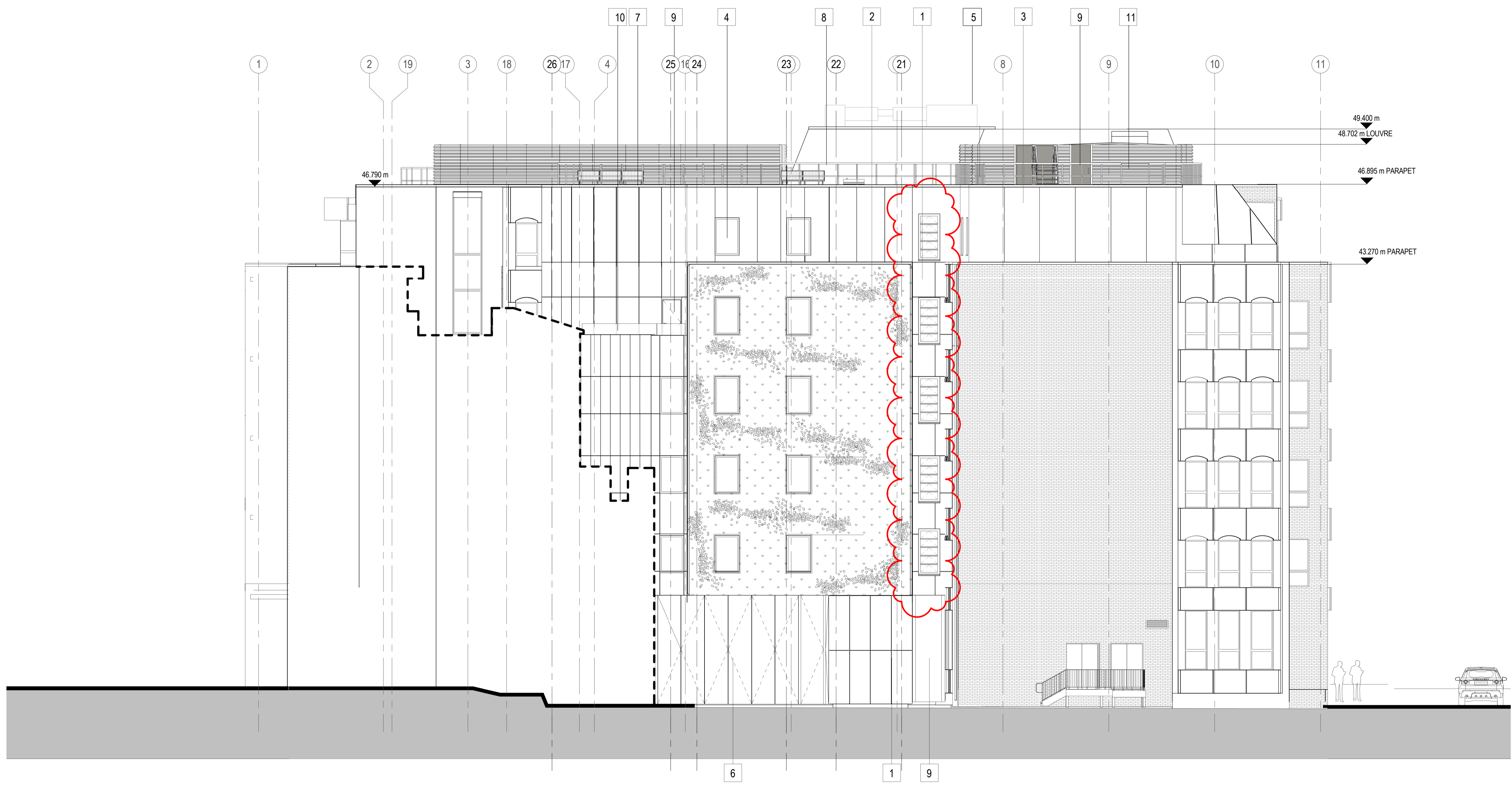
| No. | Revision  | Date     | Initial | Chk'd |
|-----|---|----------|---------|-------|
| 9   | PPC Aluminium ADV's added. Colour to match windows. | 14.1.20  | GO      |       |
| 8   | Cladding Amendments issued for Comment              | 29.4.19  | FV      |       |
| 7   | TP Issue - Section 73                               | 1.02.18  | EB      |       |
| 6   | TP Issue - Section 73                               | 05.01.17 | EB      |       |
| 5   | Plant Relocation issued For Information             | 14.12.17 | EB      |       |
| 4   | Issued for Information - Revisions as clouded       | 27.09.17 | TM      |       |
| 3   | TP Issue North Elevation Updated                    | 20.12.16 | FV      |       |
| 2   | TP Issue  | 09.12.16 | FV      |       |
| 1   | First Issue   | 18.11.16 | FV      |       |

**LEGEND**

|    |                                       |
|----|---------------------------------------|
| 1  | GRC cladding system                   |
| 2  | Green facade system                   |
| 3  | Modular metal rainscreen system       |
| 4  | PPC Aluminium windows                 |
| 5  | Metal louvre plant screen             |
| 6  | Metal folding gates                   |
| 7  | Metal capping                         |
| 8  | Metal balustrade                      |
| 9  | Metal door                            |
| 10 | Glass balustrade                      |
| 11 | GRP plant room (hidden behind louvre) |

General Notes:

- Final AHU selection and ventilation system distribution infrastructure sizing and routing at roof level will be subject to development by the Contractor.



193 to 198 High Holborn

199 to 206 High Holborn

Newton Street



PLANNING

**EPR architects**  
 30 Millbank  
 London SW1P 4DU  
 +44 (0) 20 7932 7600  
 www.epr.co.uk

Hoxton Hotel Extension  
 199-206 High Holborn London WC1V 7BD

Proposed Elevation South  
 Project Status 1:100@A1 18/11/16

| Project No | Originator | Zone | Level | Type | Role | Number | Rev |
|------------|------------|------|-------|------|------|--------|-----|
| 10475      | EPR        | 00   | WE    | DR   | A    | 0433   | 9   |