

30 Leighton Road

REV	DATE (dd.mm.yy)	DESCRIPTION
-	22.01.20	Draft Issue
A	06.02.20	Issued for Planning

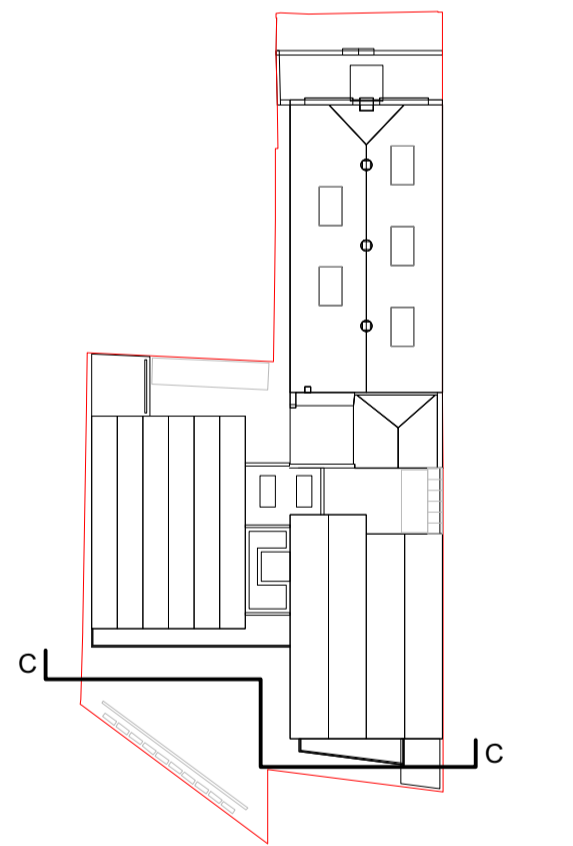
14 Leighton Road
(Industrial yard behind houses)

30 Leighton Road

32 Leighton Road



DO NOT SCALE FROM THIS DRAWING. ALL DIMENSIONS ARE TO BE CHECKED ON SITE. ALL OMISSIONS AND DISCREPANCIES TO BE REPORTED TO THE ARCHITECT IMMEDIATELY. THIS DRAWING IS TO BE READ IN CONJUNCTION WITH ALL CONSULTANTS INFORMATION. QUINN ARCHITECTS LTD RETAIN COPYRIGHT OF ALL INFORMATION IN THIS DRAWING



1 Section C
1:50 @ A1 / 1:100 @ A3

Notes

- 1. Residential houses beyond
- 2. Standing seam zinc roof to new blocks
- 3. Fibre cement cladding to exterior of new blocks
- 4. Fenestration to rear blocks metal framed double glazing, frames powdercoated grey
- 5. Jib doors in external facade, clad with matching fibre cement panels
- 6. Painted steel railings
- 7. Zinc rainwater goods
- 8. Projecting balcony
- 9. Masonry cleaned and locally repaired by specialist
- 10. Existing roof cowls repaired and redecorated. Turrets to be fitted internally with natural ventilation control mechanisms
- 11. Single storey external shed, to potentially house bins. Clad in standing seam zinc, with louvres to front.
- 12. Medical facility adjacent



Quinn Architects

Rochelle School Arnold Circus London E2 7ES
+44 (0)20 7613 3843 www.quinnuk.com

DRAWING TITLE
**Proposed Drawings
Section C Detail**

SCALE
1:50 @ A1 / 1:100 @ A3

DRAWN BY
CE

CHECKED BY
LQ

DRAWING STATUS
PLANNING

PROJECT NO.
QA183

DRAWING NO.
P229

REV.
A