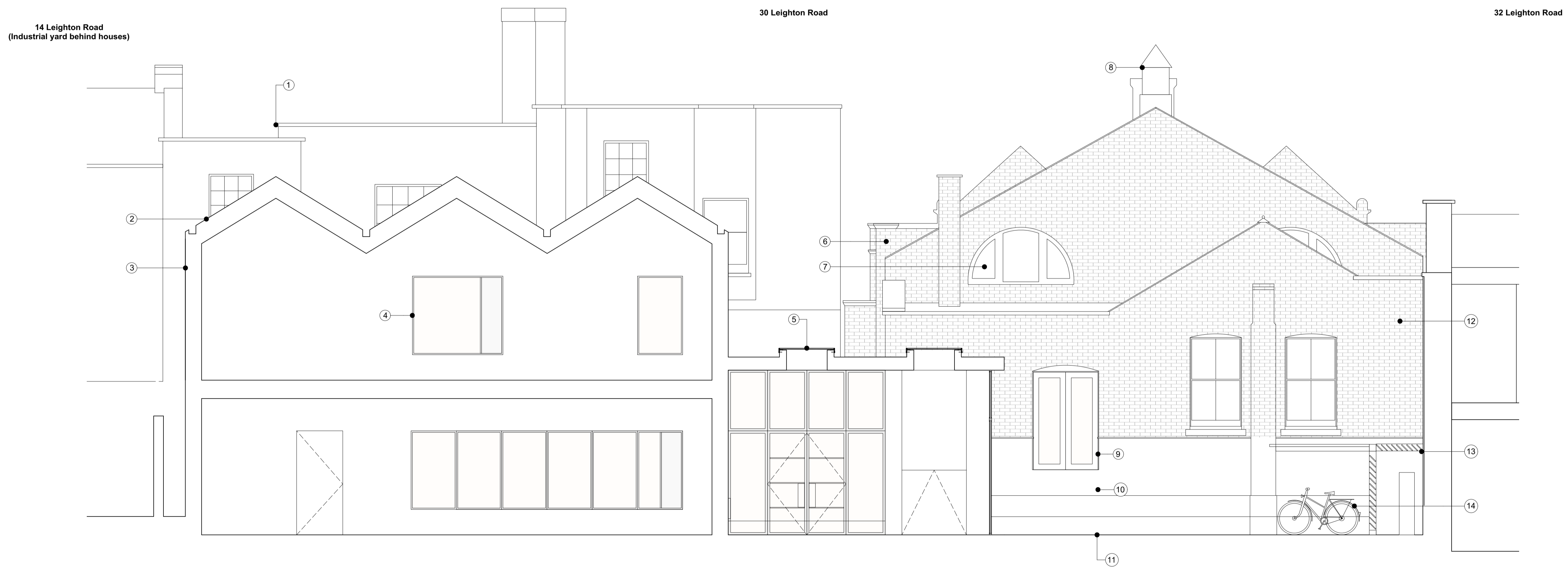


30 Leighton Road

REV	DATE (dd.mm.yy)	DESCRIPTION
-	22.01.20	Draft Issue
A	06.02.20	Issued for Planning

DO NOT SCALE FROM THIS DRAWING. ALL DIMENSIONS ARE TO BE CHECKED ON SITE. ALL OMISSIONS AND DISCREPANCIES TO BE REPORTED TO THE ARCHITECT IMMEDIATELY. THIS DRAWING IS TO BE READ IN CONJUNCTION WITH ALL CONSULTANTS INFORMATION. QUINN ARCHITECTS LTD RETAIN COPYRIGHT OF ALL INFORMATION IN THIS DRAWING



14 Leighton Road
(Industrial yard behind houses)

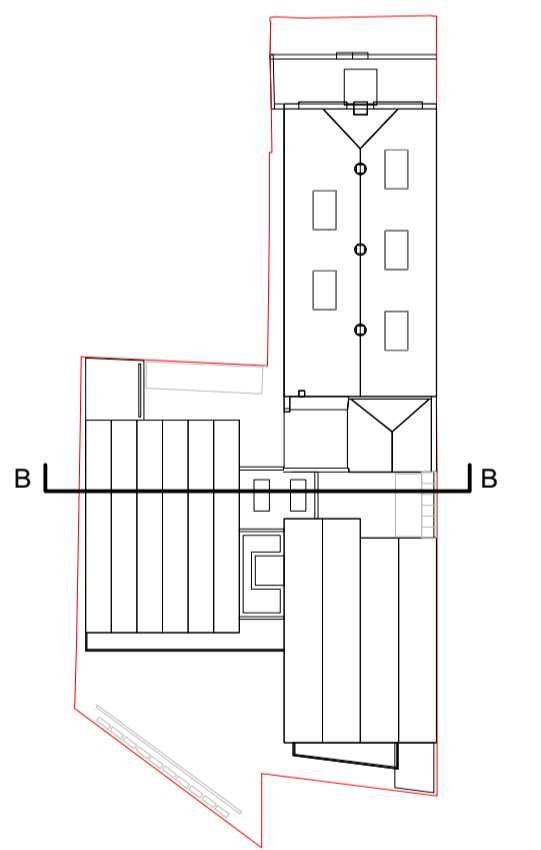
30 Leighton Road

32 Leighton Road

1 Section B
1:50 @ A1 / 1:100 @ A3

Notes

- Residential houses beyond
- Standing seam zinc roof to new blocks
- Fibre cement cladding to exterior of new blocks
- Fenestration to rear blocks metal framed double glazing, frames powdercoated grey
- Flat roof over circulation core entrance, with rooflights and sedum matting
- Masonry cleaned and locally repaired by specialist
- Existing windows refurbished; sanded, redecorated. Sashes eased, with new white seals and metal ironmongery fitted.
- Existing roof cowl repaired and redecorated. Turrets to be fitted internally with natural ventilation control mechanisms
- New timber framed glazed windows in previous, non-original door opening.
- Steps removed and rendered base to building restored and decorated
- New hard landscaping laid in courtyard
- Rear facade exposed. Masonry cleaned and repaired by specialist. Removal of render over brickwork to be ascertained by specialist pending testing of condition of brickwork beneath.
- New timber framed glazed windows in previous, non-original door opening.
- Powdercoated enclosure at low level for external plant. Acoustic louvres to front and top.
- Cycle parking covered with clear polycarbonate roof over



Quinn Architects

Rochelle School Arnold Circus London E2 7ES
+44 (0)20 7613 3843 www.quinnuk.com

DRAWING TITLE

Proposed Drawings
Section B Detail

SCALE
1:50 @ A1 / 1:100 @ A3

DRAWN BY
CE

CHECKED BY
LQ

DRAWING STATUS
PLANNING

PROJECT NO.
QA183

DRAWING NO.
P228

REV.
A