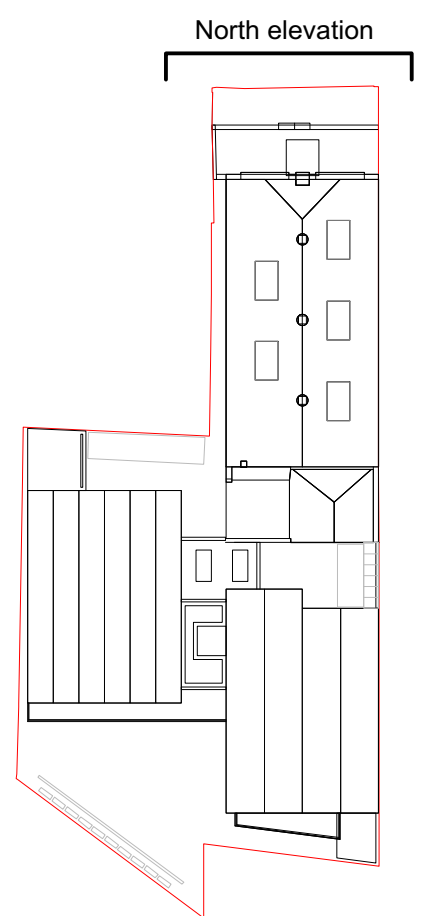
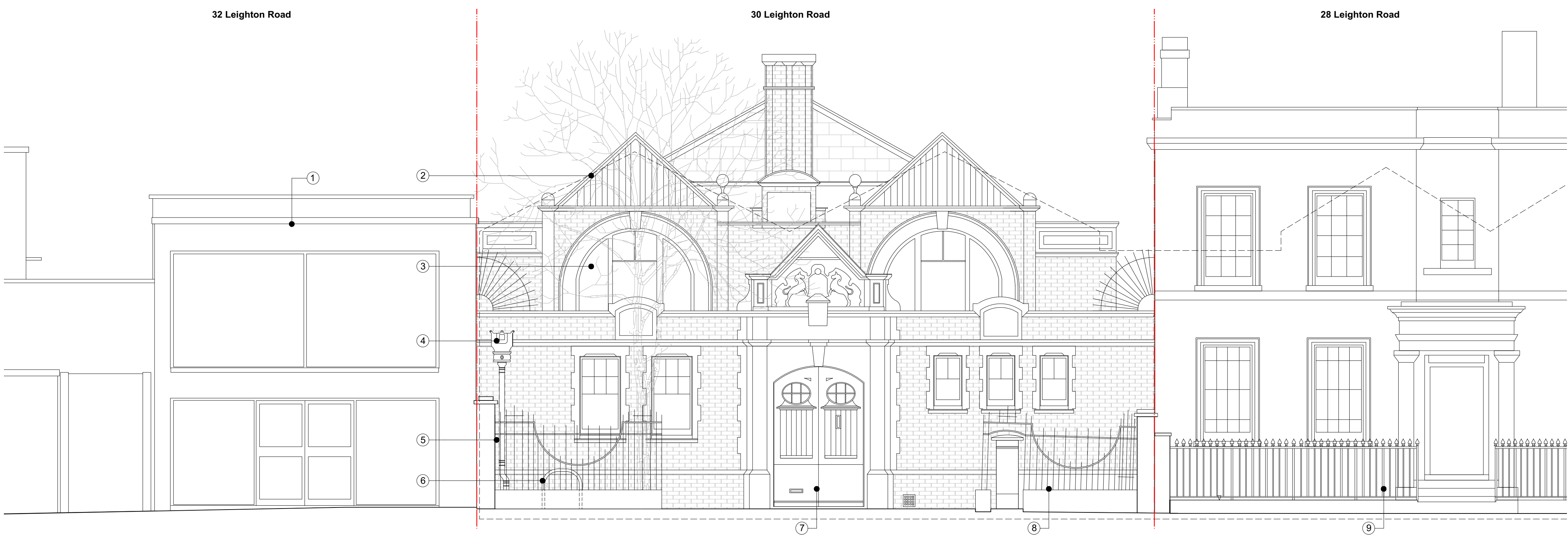


30 Leighton Road

[illegible]

DO NOT SCALE FROM THIS DRAWING. ALL DIMENSIONS ARE TO BE CHECKED ON SITE. ALL OMISSIONS AND DISCREPANCIES TO BE REPORTED TO THE ARCHITECT IMMEDIATELY. THIS DRAWING IS TO BE READ IN CONJUNCTION WITH ALL CONSULTANTS INFORMATION. QUINN ARCHITECTS LTD RETAIN COPYRIGHT OF ALL INFORMATION IN THIS DRAWING



Quinn Architects

Rochelle School Arnold Circus London E2 7ES
+44 (0)20 7613 3843 www.quinnuk.com

Rochelle School Arnold Circus London E2 7ES
+44 (0)20 7613 3843 www.quinnuk.com

DRAWING TITLE

Proposed Drawings

North Elevation Detail

SCALE
1:50 @ A1 / 1:100 @ A3

DRAWN BY
CEDRAWING STATUS
PLANNING

PROJECT NO.
QA183

DRAWING NO.
P226

A

1 North Elevation
1:50 @ A1 / 1:100 @ A3

Notes

- | | | |
|--|---|---|
| 1. Medical centre | 4. Original rainwater goods repainted, local repaired where necessary to tighten fixings and seal leaks | 7. Existing front doors and hanging lamp retained and restored. |
| 2. Front facade cleaned and repaired by specialist masonry contractor. | 5. New black railing with brick base to replicate existing railings opposite | 8. Existing railings redecorated. |
| 3. Existing windows on front elevation refurbished; sanded, redecorated. Sashes eased, with new white seals and metal ironmongery fitted. Security bars removed. | 6. New bike parking sheffield stands in forecourt | 9. Residential properties adjacent |

