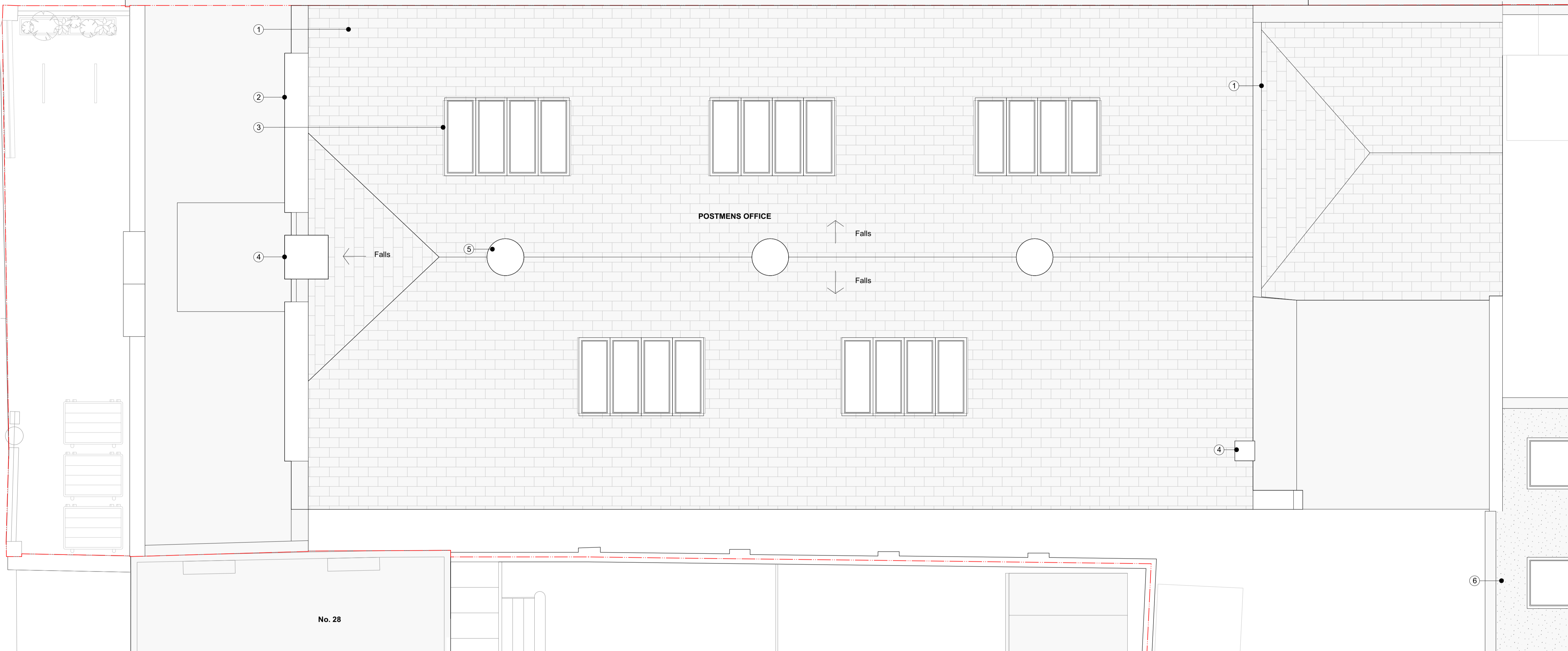


REV	DATE (dd.mm.yy)	DESCRIPTION
-	22.01.20	Draft Issue
A	06.02.20	Issued for Planning

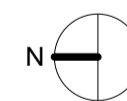
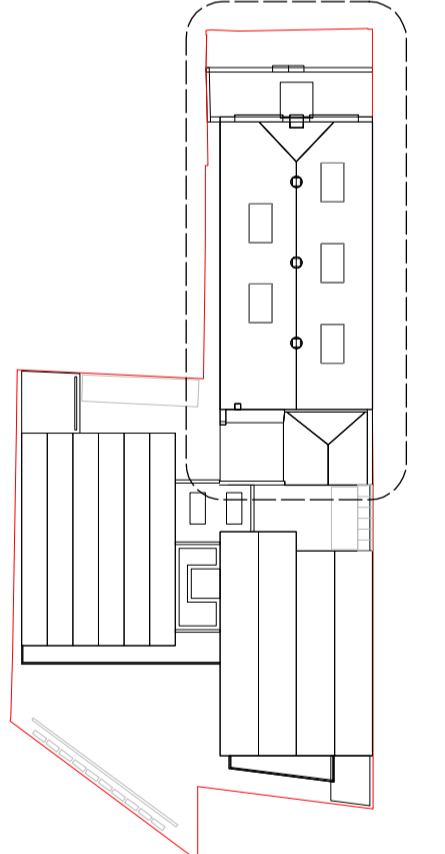
No. 30

Extent of original fabric



DO NOT SCALE FROM THIS DRAWING. ALL DIMENSIONS ARE TO BE CHECKED ON SITE. ALL OMISSIONS AND DISCREPANCIES TO BE REPORTED TO THE ARCHITECT IMMEDIATELY. THIS DRAWING IS TO BE READ IN CONJUNCTION WITH ALL CONSULTANTS INFORMATION. QUINN ARCHITECTS LTD RETAIN COPYRIGHT OF ALL INFORMATION IN THIS DRAWING

AREA OF DETAIL



Quinn Architects

Rochelle School Arnold Circus London E2 7ES
+44 (0)20 7613 3843 www.quinnuk.com

DRAWING TITLE

**Proposed Drawings
First Floor Plan
Postmens Office Detail**

SCALE
1:100 @ A1 / 1:200 @ A3

DRAWN BY
CE

CHECKED BY
LQ

DRAWING STATUS
PLANNING

PROJECT NO.
QA183

DRAWING NO.
P107

REV.
A

Notes

1. Roof slates lifted and salvaged as far as possible for re-use. Deck, waterproofing and lead flashings replaced and ties re-laid.
2. Masonry on street elevation repaired and cleaned by specialist.
3. New metal framed, fixed double glazed rooflights sitting within existing openings. New flashings in lead.
4. Decorative chimney stack repaired by conservation specialist. New lead flashings over lime mortar faunchings to protect ledges.
5. Existing roof turrets repaired and redecorated. Turrets to be fitted internally with natural ventilation control mechanisms
6. Sedum over flat roof in circulation block