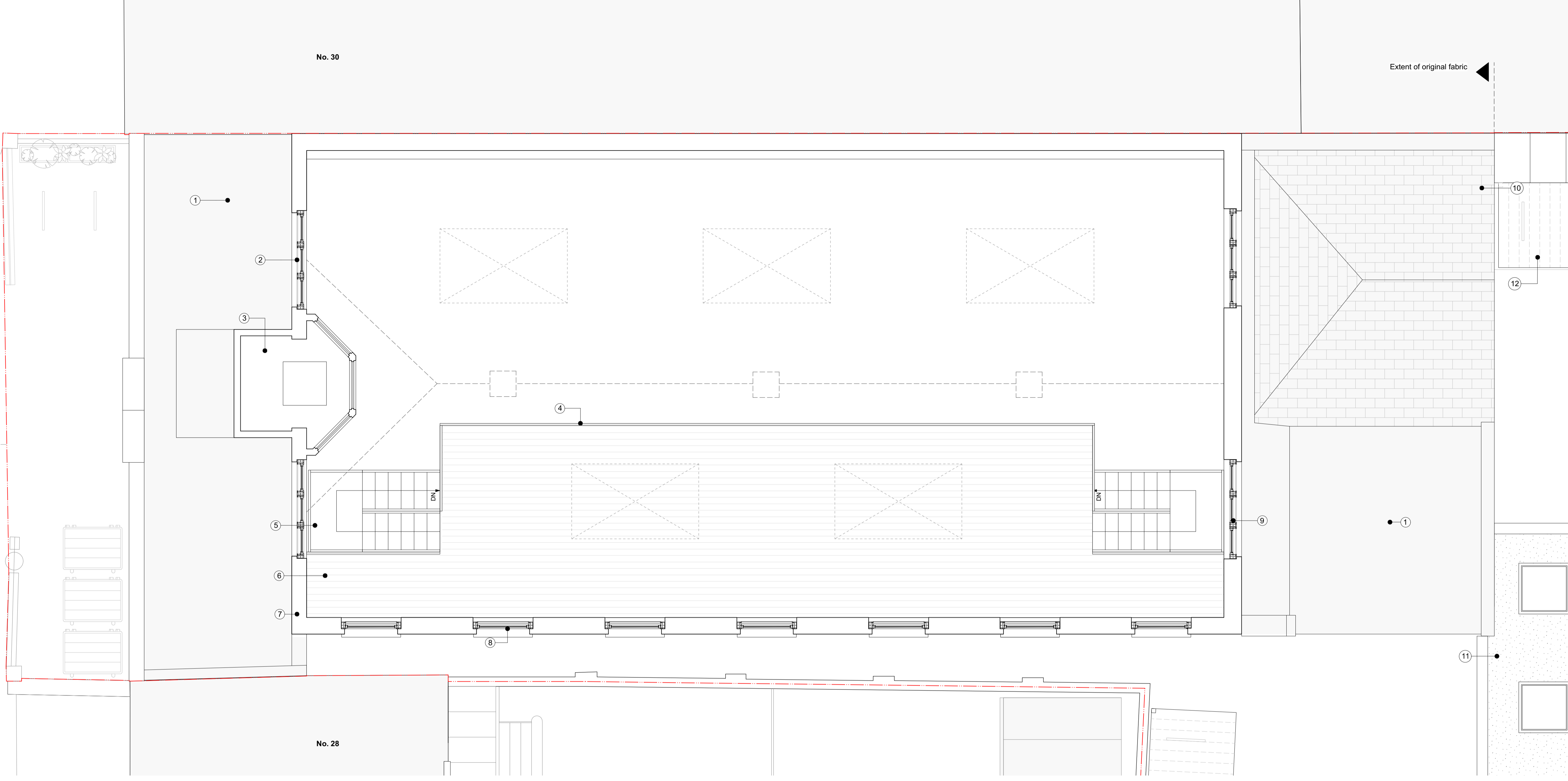
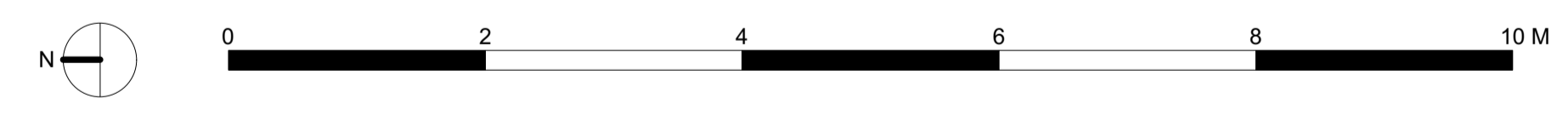
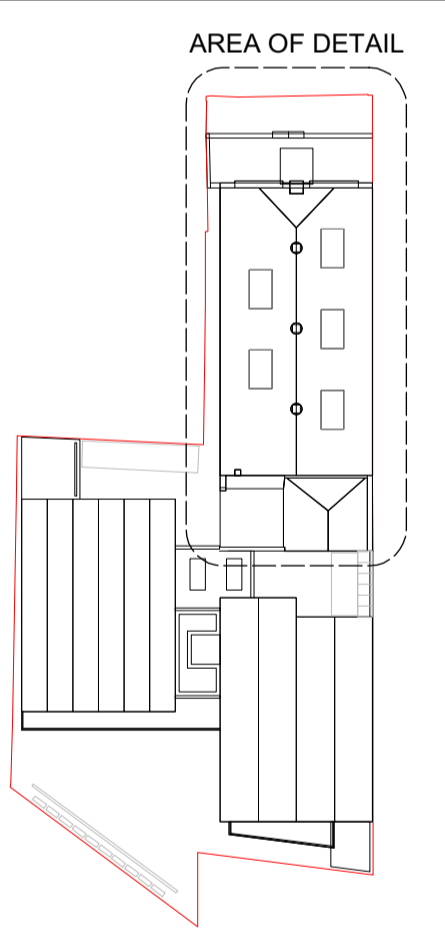


REV	DATE (dd.mm.yy)	DESCRIPTION
-	22.01.20	Draft Issue
A	06.02.20	Issued for Planning



DO NOT SCALE FROM THIS DRAWING. ALL DIMENSIONS ARE TO BE CHECKED ON SITE. ALL OMISSIONS AND DISCREPANCIES TO BE REPORTED TO THE ARCHITECT IMMEDIATELY. THIS DRAWING IS TO BE READ IN CONJUNCTION WITH ALL CONSULTANTS INFORMATION. QUINN ARCHITECTS LTD RETAIN COPYRIGHT OF ALL INFORMATION IN THIS DRAWING



**Notes**

1. Roof covering renewed; new membrane roof installed, joists checked and strengthened if required and insulation installed. Lead flashings installed to perimeters.
2. Existing windows on front elevation refurbished; sanded, redecorated. Sashes eased, with new white seals and metal ironmongery fitted. Security bars removed.
3. Postmaster's Office redecorated. Windows sanded and redecorated.
4. Powdercoated metal balustrade to mezzanine
5. New metal framed timber clad stairs to proposed mezzanine level above
6. New metal framed mezzanine laid with timber flooring to match tone of existing pine flooring below
7. Masonry on street elevation repaired and cleaned by specialist.
8. Window openings on side elevation enlarged by dropping sills to string course in brickwork. New timber sash windows installed with details to replicate existing windows.
9. Existing windows on rear elevation refurbished; sanded, redecorated. Sashes eased, with new white seals and metal ironmongery fitted. Security bars removed.
10. Roof slates lifted and salvaged as far as possible for re-use. Deck, waterproofing and lead flashings replaced and tiles re-laid.
11. Single storey link building with flat sedum roof and fixed rooflights
12. Clear polycarbonate roof over bike parking below

**Quinn Architects**

Rochelle School Arnold Circus London E2 7ES  
+44 (0)20 7613 3843 www.quinnuk.com

DRAWING TITLE  
**Proposed Drawings  
First Floor Plan  
Postmens Office Detail**

SCALE 1:100 @ A1 / 1:200 @ A3	DRAWN BY CE
	CHECKED BY LQ

DRAWING STATUS  
PLANNING

PROJECT NO. <b>QA183</b>	DRAWING NO. <b>P106</b>	REV. <b>A</b>
-----------------------------	----------------------------	------------------