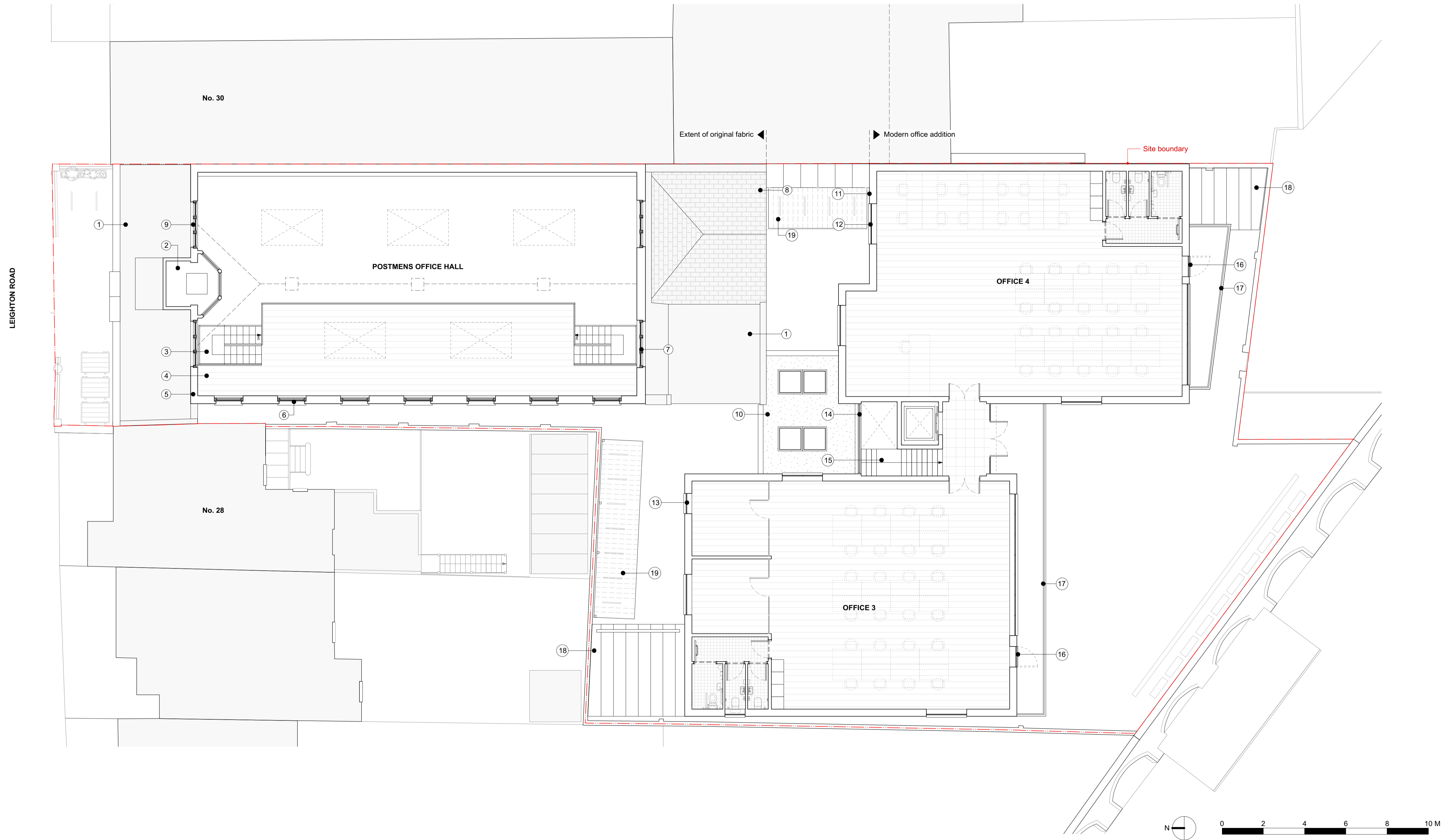


REV	DATE (dd.mm.yy)	DESCRIPTION
-	22.01.20	Draft Issue
A	06.02.20	Issued for Planning

DO NOT SCALE FROM THIS DRAWING. ALL DIMENSIONS ARE TO BE CHECKED ON SITE. ALL OMISSIONS AND DISCREPANCIES TO BE REPORTED TO THE ARCHITECT IMMEDIATELY. THIS DRAWING IS TO BE READ IN CONJUNCTION WITH ALL CONSULTANTS INFORMATION. QUINN ARCHITECTS LTD RETAIN COPYRIGHT OF ALL INFORMATION IN THIS DRAWING



Notes

- | | | |
|---|--|--|
| <ol style="list-style-type: none"> 1. Roof covering renewed; new membrane roof installed, joists checked and strengthened if required and insulation installed. Lead flashings installed to perimeters. 2. Postmaster's Office redecorated. Windows sanded and redecorated. 3. New metal framed timber clad stairs to proposed mezzanine level above 4. New metal framed mezzanine laid with timber flooring to match tone of existing pine flooring below 5. Masonry on street elevation repaired and cleaned by specialist. 6. Window openings on side elevation enlarged by dropping sills to string course in brickwork. New timber casement windows installed with details to replicate existing windows. 7. Existing windows on rear elevation refurbished; sanded, redecorated. Sashes eased, with new white seals and metal ironmongery fitted. Security bars removed. | <ol style="list-style-type: none"> 8. Roof slates lifted and salvaged as far as possible for re-use. Deck, waterproofing and lead flashings replaced and tiles re-laid 9. Existing windows on front elevation refurbished; sanded, redecorated. Sashes eased, with new white seals and metal ironmongery fitted. Security bars removed. 10. Single storey link building with flat sedum roof and fixed rooflights 11. New blocks to rear clad with cement panels 12. Fenestration to rear blocks metal framed double glazing, frames powdercoated grey 13. Windows facing houses partially obscured to eye level to reduce overlooking 14. Fixed metal framed double glazing to stairwell, frames powdercoated grey | <ol style="list-style-type: none"> 15. New stair and lift 16. Door to balcony clad with cement panels to hide within cladding 17. Balcony with steel balustrade. Balustrade powdercoated to match glazing frames. 18. Single storey external shed, to potentially house bins. Clad in standing seam zinc, with louvres to front. 19. Clear polycarbonate roof over bike parking below |
|---|--|--|

Quinn Architects

Rochelle School Arnold Circus London E2 7ES
+44 (0)20 7613 3843 www.quinnuk.com

DRAWING TITLE
**Proposed Drawings
First Floor Plan**

SCALE 1:100 @ A1 / 1:200 @ A3	DRAWN BY CE
	CHECKED BY LQ

DRAWING STATUS
PLANNING

PROJECT NO. QA183	DRAWING NO. P102	REV. A
-----------------------------	----------------------------	------------------