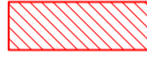
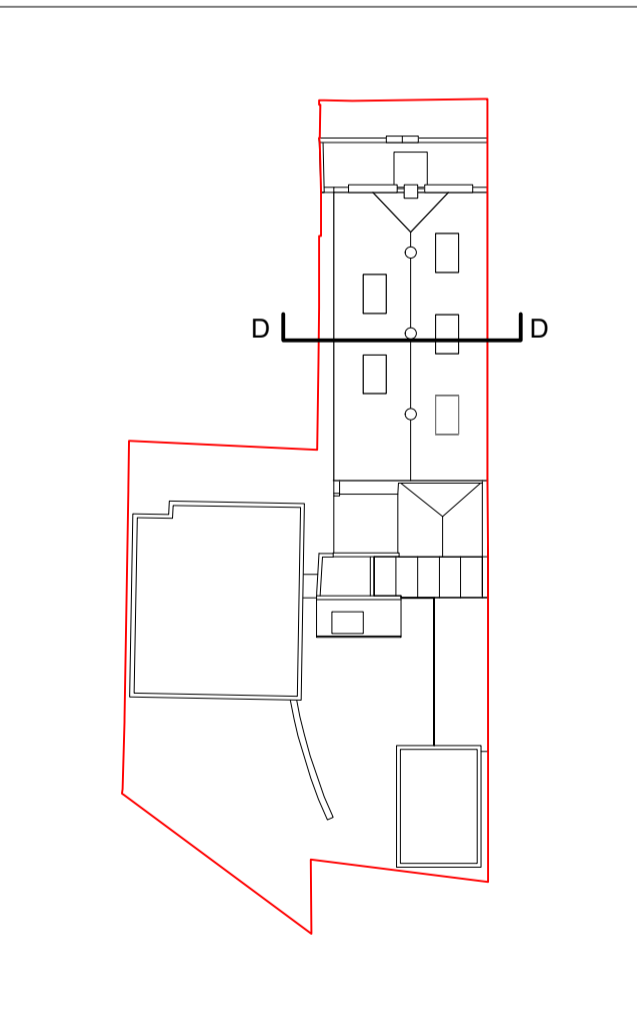


30 Leighton Road

[illegible]

DO NOT SCALE FROM THIS DRAWING. ALL DIMENSIONS ARE TO BE CHECKED ON SITE. ALL OMISSIONS AND DISCREPANCIES TO BE REPORTED TO THE ARCHITECT IMMEDIATELY. THIS DRAWING IS TO BE READ IN CONJUNCTION WITH ALL CONSULTANTS INFORMATION. QUINN ARCHITECTS LTD RETAIN COPYRIGHT OF ALL INFORMATION IN THIS DRAWING

 Items hatched / outlined in **red**  
proposed for demolition or  
strip-out



**Quinn Architects**

Rochelle School Arnold Circus London E2 7ES  
+44 (0)20 7613 3843 [www.quinnuk.com](http://www.quinnuk.com)

Rochelle School Arnold Circus London E2 7ES  
+44 (0)20 7613 3843 [www.quinnuk.com](http://www.quinnuk.com)

# DRAWING TITLE

## Demolition Drawings

### Section D

## Demolition Drawings Section D

SCALE  
1:100 @ A1 / 1:200 @ A3

DRAWN BY  
CE

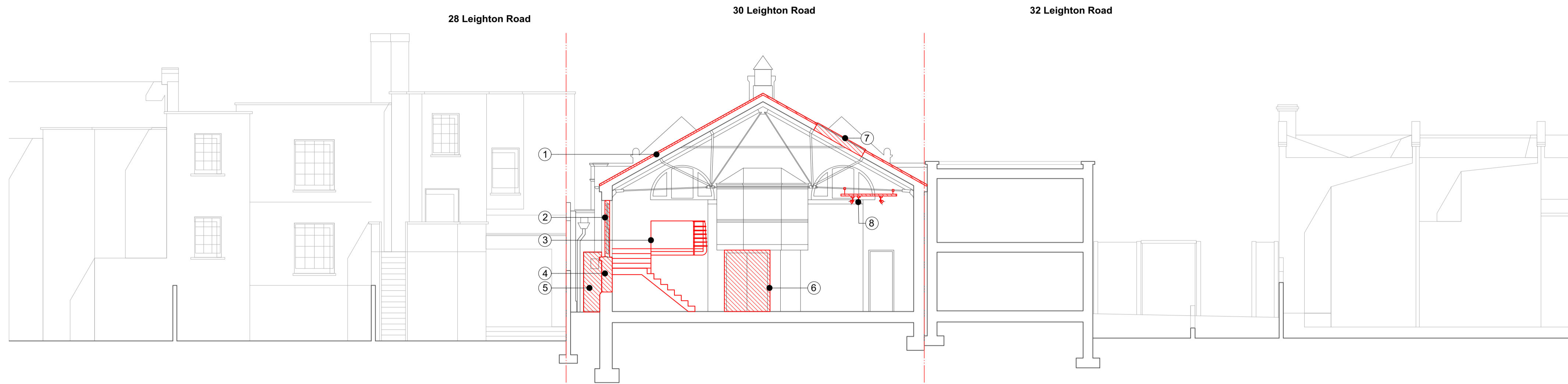
CHECKED BY  
LQ

DRAWING STATUS  
PLANNING

PROJECT NO.  
QA183

DRAWING NO.  
**P072**

**A**



1 Section D  
1:100 @ A1 / 1:200 @ A3

Section D  
1:100 @ A1 / 1:200 @ A3

## Notes

1. Slate carefully removed from roof to allow for waterproofing and repairs. Slate to be salvaged as far as possible
2. Existing side elevation windows removed ready for enlargement
3. Modern addition mezzanine, stair and structure removed
4. Masonry carefully removed to extend window sills down to string course in brick
5. Fire escape removed ready for replacement
6. Heavily modified door to be removed, modern additions stripped off and doors refurbished. Doors re-hung to swing outwards.
7. Existing rooflights carefully removed, ready for replacement with new
8. Modern fixtures, fittings and lighting carefully stripped out

