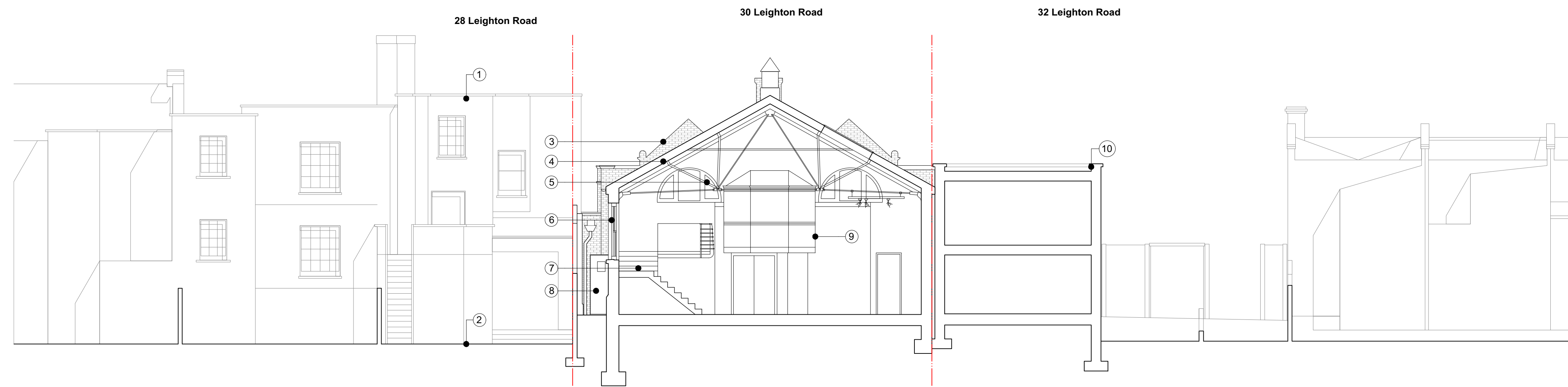


30 Leighton Road



1 Section D
1:100 @ A1 / 1:200 @ A3

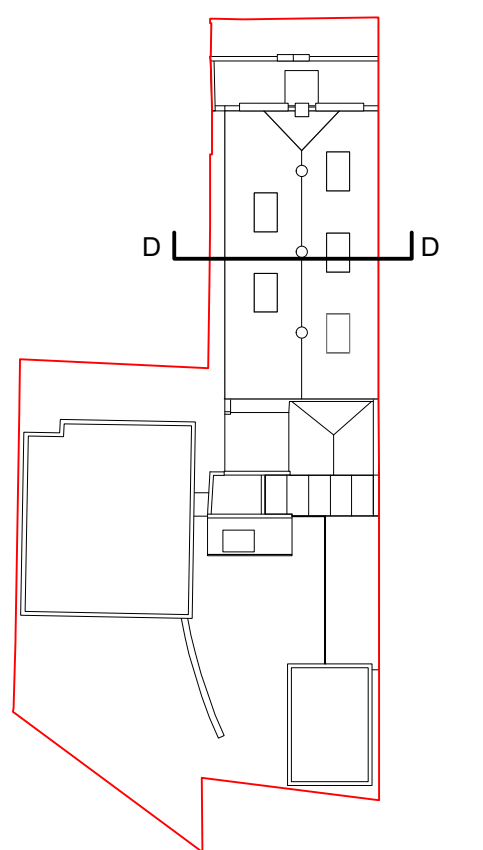
Notes

1. Residential houses beyond
2. Residential garden behind existing studio block
3. Street facing facade beyond
4. Slate roof over Postmens Office hall
5. Exposed steel structure and trusses over hall
6. Timber framed sash windows along side elevation
7. Non-original mezzanine and stair in hall
8. Fire escape door into side passage
9. Postmaster's Office above hall
10. Medical office adjacent



REV	DATE (dd.mm.yy)	DESCRIPTION
-	22.01.20	Draft Issue
A	06.02.20	Issued for Planning

DO NOT SCALE FROM THIS DRAWING. ALL DIMENSIONS ARE TO BE CHECKED ON SITE. ALL OMISSIONS AND DISCREPANCIES TO BE REPORTED TO THE ARCHITECT IMMEDIATELY. THIS DRAWING IS TO BE READ IN CONJUNCTION WITH ALL CONSULTANTS INFORMATION. QUINN ARCHITECTS LTD RETAIN COPYRIGHT OF ALL INFORMATION IN THIS DRAWING



Quinn Architects

Rochelle School Arnold Circus London E2 7ES
+44 (0)20 7613 3843 www.quinnuk.com

DRAWING TITLE

Existing Drawings
Section D

SCALE
1:100 @ A1 / 1:200 @ A3

DRAWN BY
CE

CHECKED BY
LQ

DRAWING STATUS
PLANNING

PROJECT NO.
QA183

DRAWING NO.
P032

REV.
A