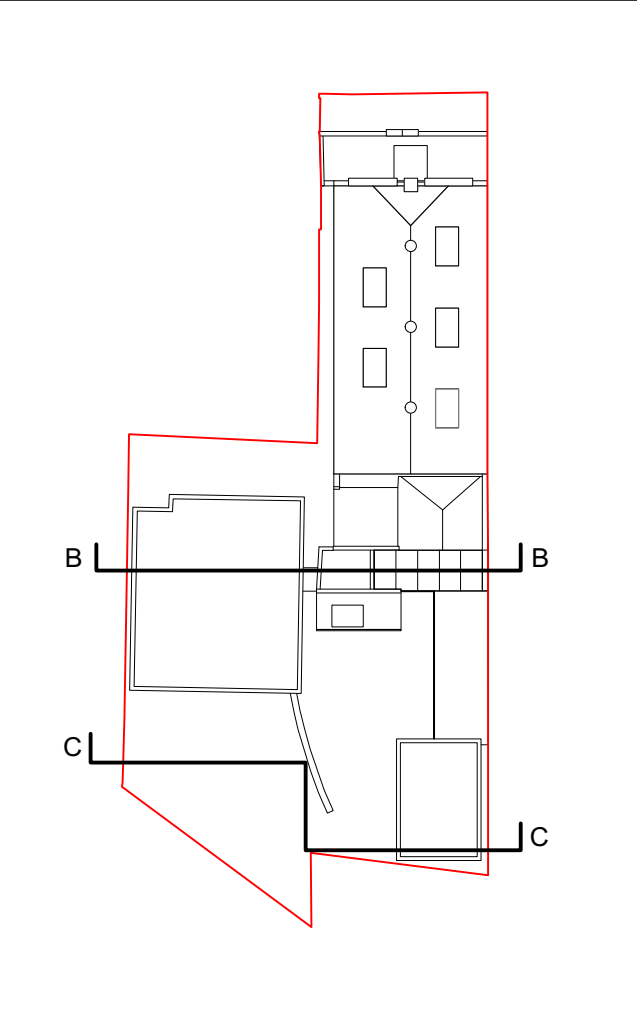


[illegible]

DO NOT SCALE FROM THIS DRAWING. ALL DIMENSIONS ARE TO BE CHECKED ON SITE. ALL OMISSIONS AND DISCREPANCIES TO BE REPORTED TO THE ARCHITECT IMMEDIATELY. THIS DRAWING IS TO BE READ IN CONJUNCTION WITH ALL CONSULTANTS INFORMATION. QUINN ARCHITECTS LTD RETAIN COPYRIGHT OF ALL INFORMATION IN THIS DRAWING



Quinn Architects

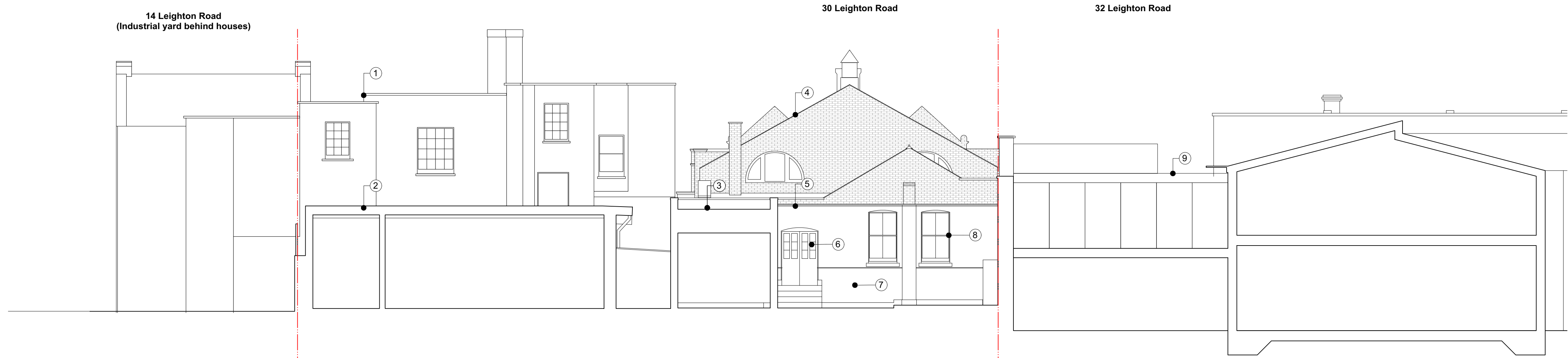
Rochelle School Arnold Circus London E2 7ES
+44 (0)20 7613 3843 www.quinnuk.com

Existing Drawings
Section B
Section C

SCALE 1:100 @ A1 / 1:200 @ A3	DRAWN BY CE
	CHECKED BY LQ

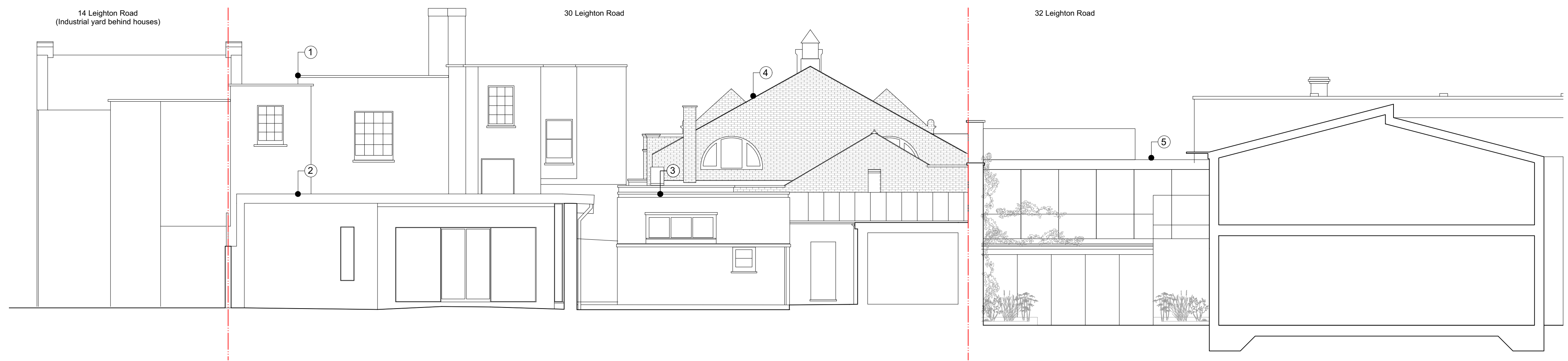
PROJECT NO. QA183	DRAWING NO. P031	REV. A
-----------------------------	----------------------------	------------------

QA183	P031	A
-------	------	---



1 Section B
1:100 @ A1 / 1:200 @ A3

- Notes
- 1. Residential houses beyond
- 2. White rendered 'studio block' with flat roof
- 3. Modern day office addition
- 4. Two storey hall of Postmens Office beyond
- 5. Glass roof enclosing lower portion of Postmens Office rear wall
- 6. Non-original doors and steps into atrium
- 7. Rear facade within atrium rendered over and painted white
- 8. Original external windows, now opening into internal atrium
- 9. Medical practice adjacent



2 Section C
1:100 @ A1 / 1:200 @ A3

- Notes
1. Residential houses beyond
 2. White rendered 'studio block' with flat roof
 3. Modern day office addition
 4. Two storey hall of Postmens Office beyond
 5. Medical practice adjacent



Existing Drawings
Section B
Section C

SCALE 1:100 @ A1 / 1:200 @ A3	DRAWN BY CE
	CHECKED BY LQ

PROJECT NO. QA183	DRAWING NO. P031	REV. A
-----------------------------	----------------------------	------------------

QA183	P031	A
-------	------	---
