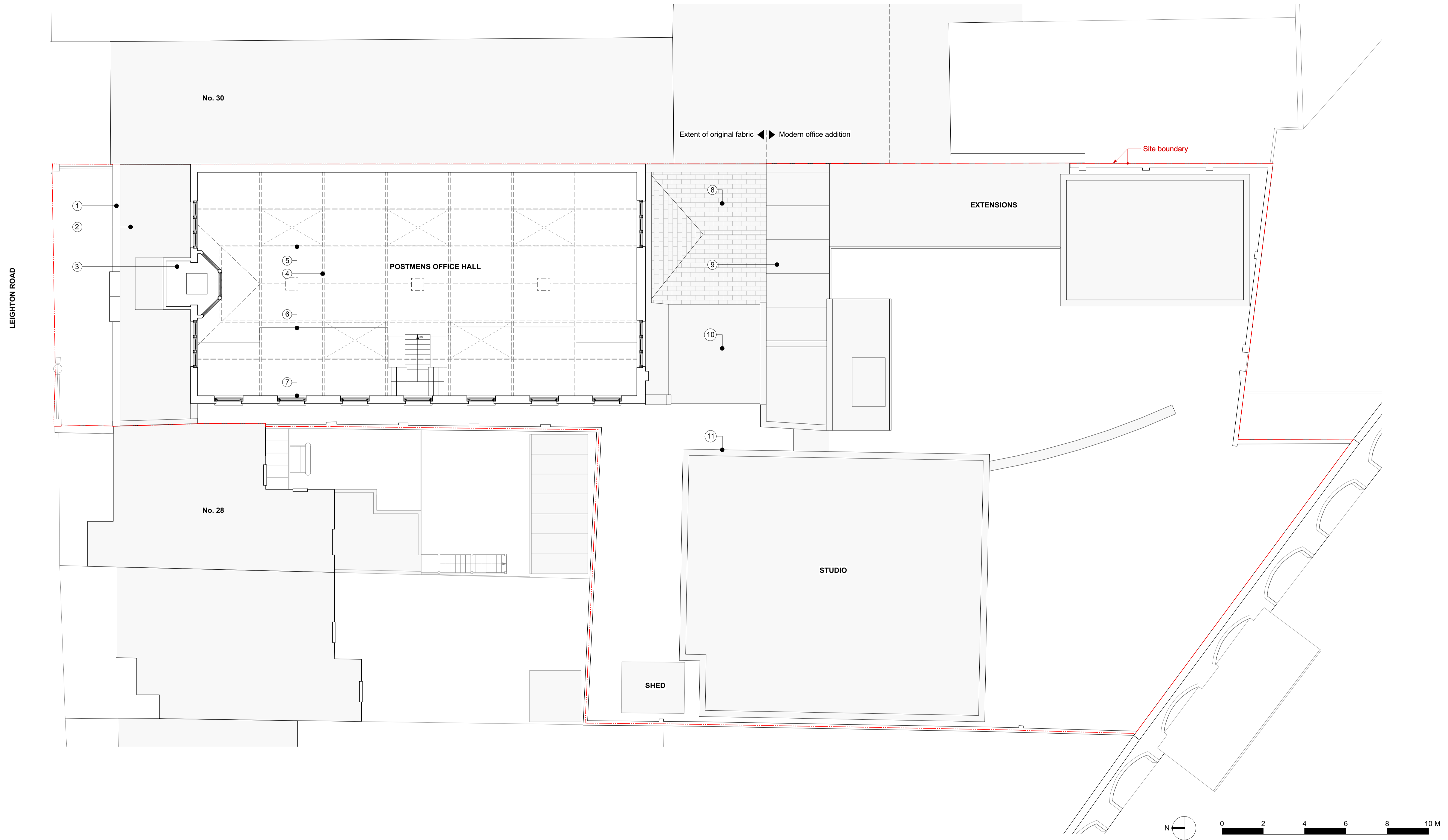


30 Leighton Road

REV	DATE (dd.mm.yy)	DESCRIPTION
-	22.01.20	Draft Issue
A	06.02.20	Issued for Planning

DO NOT SCALE FROM THIS DRAWING. ALL DIMENSIONS ARE TO BE CHECKED ON SITE. ALL OMISSIONS AND DISCREPANCIES TO BE REPORTED TO THE ARCHITECT IMMEDIATELY. THIS DRAWING IS TO BE READ IN CONJUNCTION WITH ALL CONSULTANTS INFORMATION. QUINN ARCHITECTS LTD RETAIN COPYRIGHT OF ALL INFORMATION IN THIS DRAWING



Notes

- | | |
|---|---|
| 1. Original stone capping stones over street facade | 7. Timber framed sash windows |
| 2. Flat roof over entrance to Postmens Office | 8. Original pitched slate roof |
| 3. Postmasters Office with timber framed internal bay window overlooking hall below | 9. Later addition glass and metal roof over internal courtyard |
| 4. Exposed steel trusses above | 10. Flat roof |
| 5. Rooflights above | 11. Later addition of studio block and extensions; white rendered buildings with modern double glazed windows and doors |
| 6. Later addition mezzanine with metal handrail and steel structure below | |

Quinn Architects

Rochelle School Arnold Circus London E2 7ES
+44 (0)20 7613 3843 www.quinnuk.com

DRAWING TITLE
**Existing Drawings
First Floor Plan**

SCALE
1:100 @ A1 / 1:200 @ A3

DRAWN BY
CE

CHECKED BY
LQ

DRAWING STATUS
PLANNING

PROJECT NO.
QA183

DRAWING NO.
P022

REV.
A