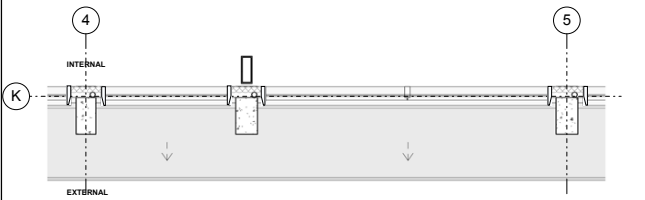
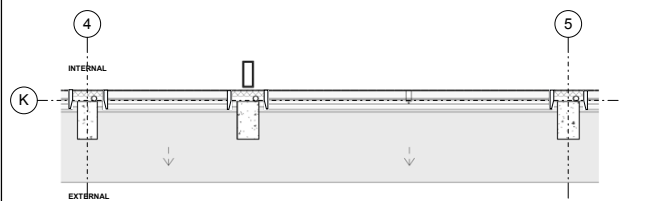


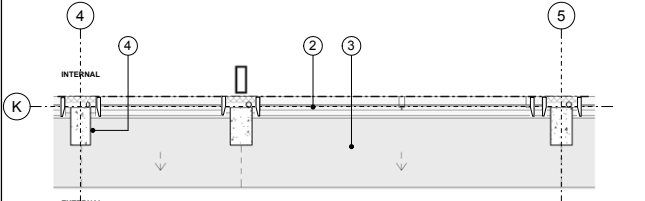
06 9th Mezzanine Floor Plan



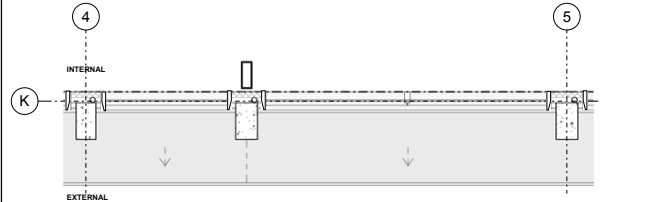
05 Ninth Floor Plan



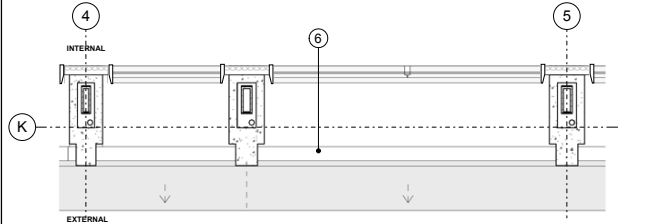
04 Eighth Floor Plan



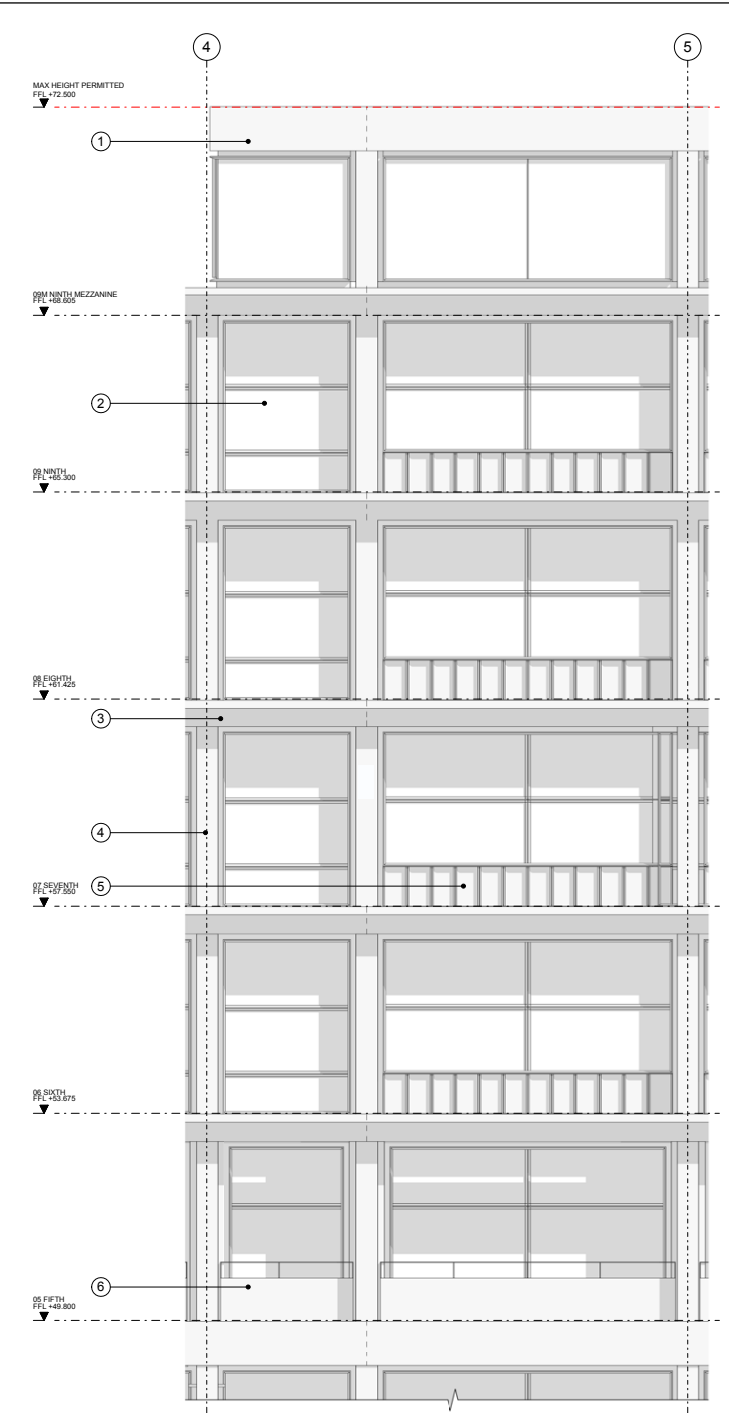
03 Seventh Floor Plan



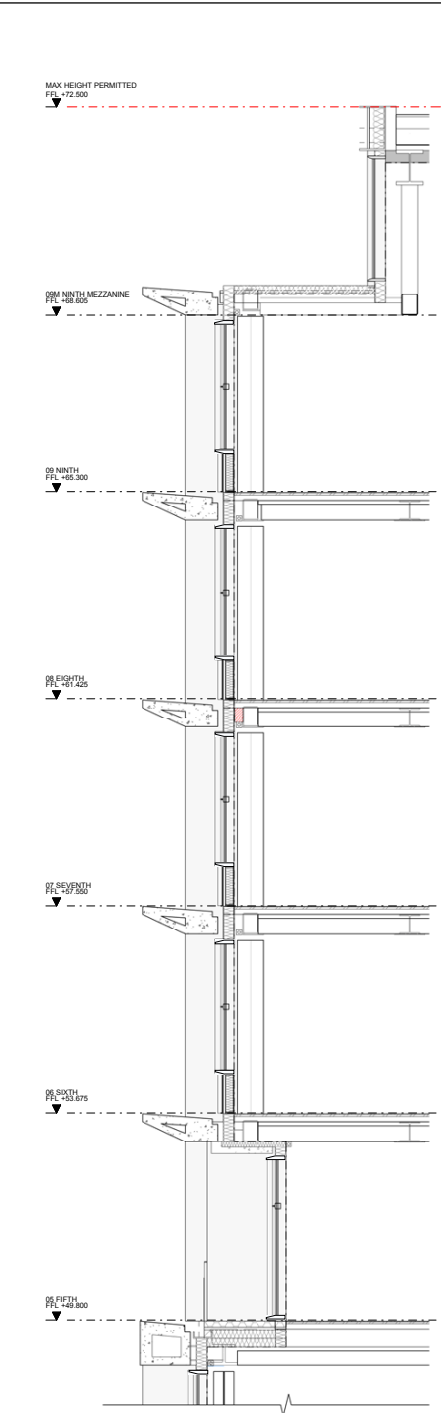
02 Sixth Floor Plan



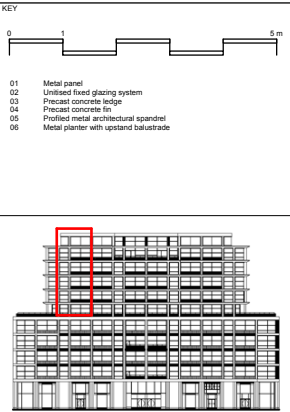
01 Fifth Floor Plan



07 East Bay Elevation - Upper Levels



08 East Bay Facade Section - Upper Levels

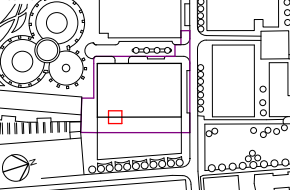


REV	DATE	DESCRIPTION
01	10/05/18	Issued For Approval
02	31/01/20	Issued For Approval

CONTRACTOR:	KCCGRL
STRUCTURAL ENGINEER:	AKT - II
SERVICES ENGINEER:	CUNDALL
COST CONSULTANT:	GARDINER + THEOBALD
FIRE ENGINEER:	OLSSON FIRE ENGINEERING
ACOUSTIC CONSULTANT:	CUNDALL
FACADE ENGINEER:	FMDC
TRANSPORT CONSULTANT:	ARUP LOGISTICS
ACCESS CONSULTANT:	ALL CLEAR DESIGNS

CLIENT / PROJECT MANAGER:	KCCGRL
CONTRACTOR:	KCCGRL
STRUCTURAL ENGINEER:	AKT - II
SERVICES ENGINEER:	CUNDALL
COST CONSULTANT:	GARDINER + THEOBALD
FIRE ENGINEER:	OLSSON FIRE ENGINEERING
ACOUSTIC CONSULTANT:	CUNDALL
FACADE ENGINEER:	FMDC
TRANSPORT CONSULTANT:	ARUP LOGISTICS
ACCESS CONSULTANT:	ALL CLEAR DESIGNS

NOTE:
When this drawing is issued in uncontrolled CAD format it will be accompanied by a PDF version and is issued to enable the recipient to prepare their own documents / models / drawings for which they are solely responsible.
The recipient should report all drawing errors, omissions and discrepancies to the architect. All dimensions should be checked on site by the contractor and such dimensions shall be the contractor's responsibility.



ALLFORD HALL MONAGHAN MORRIS
ARCHITECTS LTD
MORELANDS, 5-23 OLD STREET LONDON EC1Y 9HL
TEL 020 7251 5261 FAX 020 7251 5123 WEB WWW.AHMM.CO.UK

job title				King's Cross Central: Building P2			
drawing title / location				Proposed Facade Bay Study of Typical E/S Elevation (Upper)			
drawn by	checked	scale	status	drawn by	checked	scale	status
KJ	RH	1:100@A3	FOR APPROVAL	KJ	RH	1:100@A3	FOR APPROVAL
project	zone	source	classification	project	zone	source	classification
16085	(00)_P402	02		16085	(00)_P402	02	