

DAR Plus — 150 Holborn

# 150 Holborn Mock-up Review

November 2019











# Contents

## Introduction

## Observations from visit

**Front Cover:**  
*Southern View along High Holborn*

**Left:**  
*West View along Grays Inn Road*

# Mock-up Review

## Introduction

Perkins and Will Visited Italy to inspect the visual mock-up at permasteelia's factory where PW were presented with two visual mock-ups as well as three large GRC sample panels which represented the large flat panels which fill form the cladding to the Core. Alongside this, Anodized aluminum extrusions were presented to represent the mullions as well as sample panels of the profiled facade for the residential building as well as the flat black anodized panels.





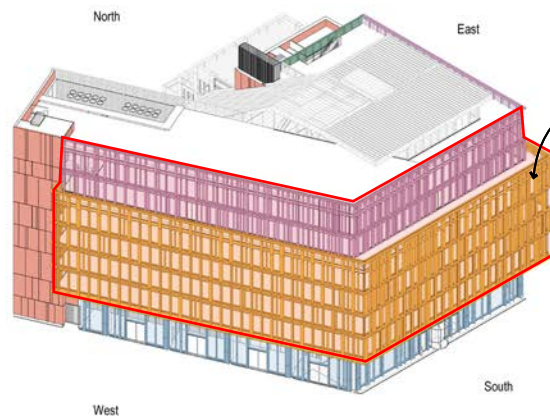
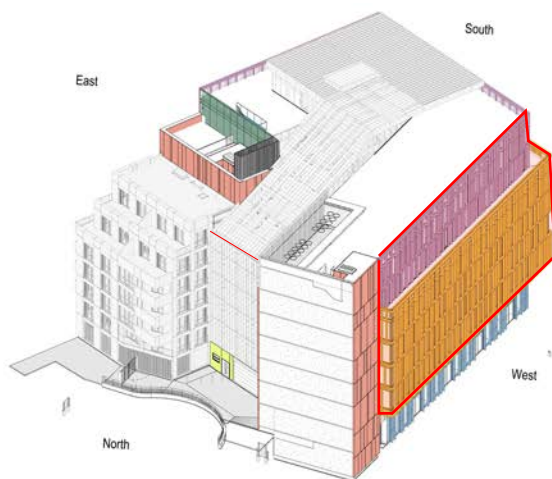


Visual Mock-up

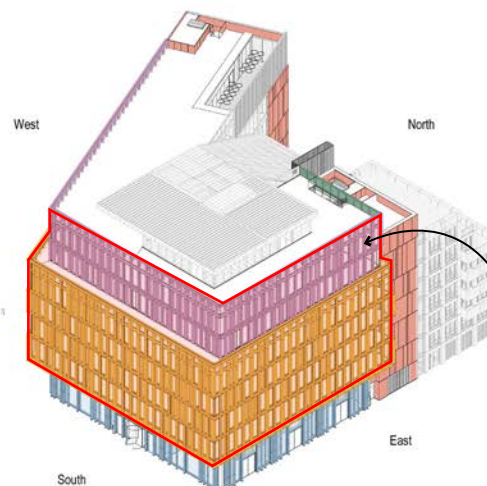
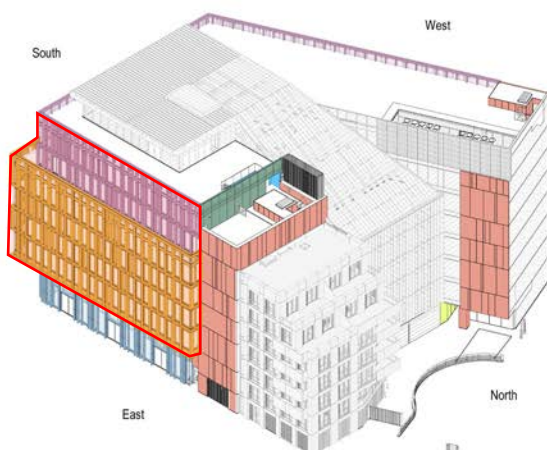
# Typical Upper Elevations

## GRC Fins, vision glazing with anodised aluminum mullions & transoms.

This mock-up showed all possible conditions of the main facades (South, East & West) which includes the horizontal and vertical fins, floor to ceiling vision glazing, frited glass spandrels, glass to glass corner as finally the extended facade balustrade detail. The GRC is a light grey / white, the vision glazing within a natural anodised aluminum frame of mullions and transoms. The spandrels in front of the slab edge will have a dark grey frit to the back glass panel.



GRC fins with anodised aluminum untised panels

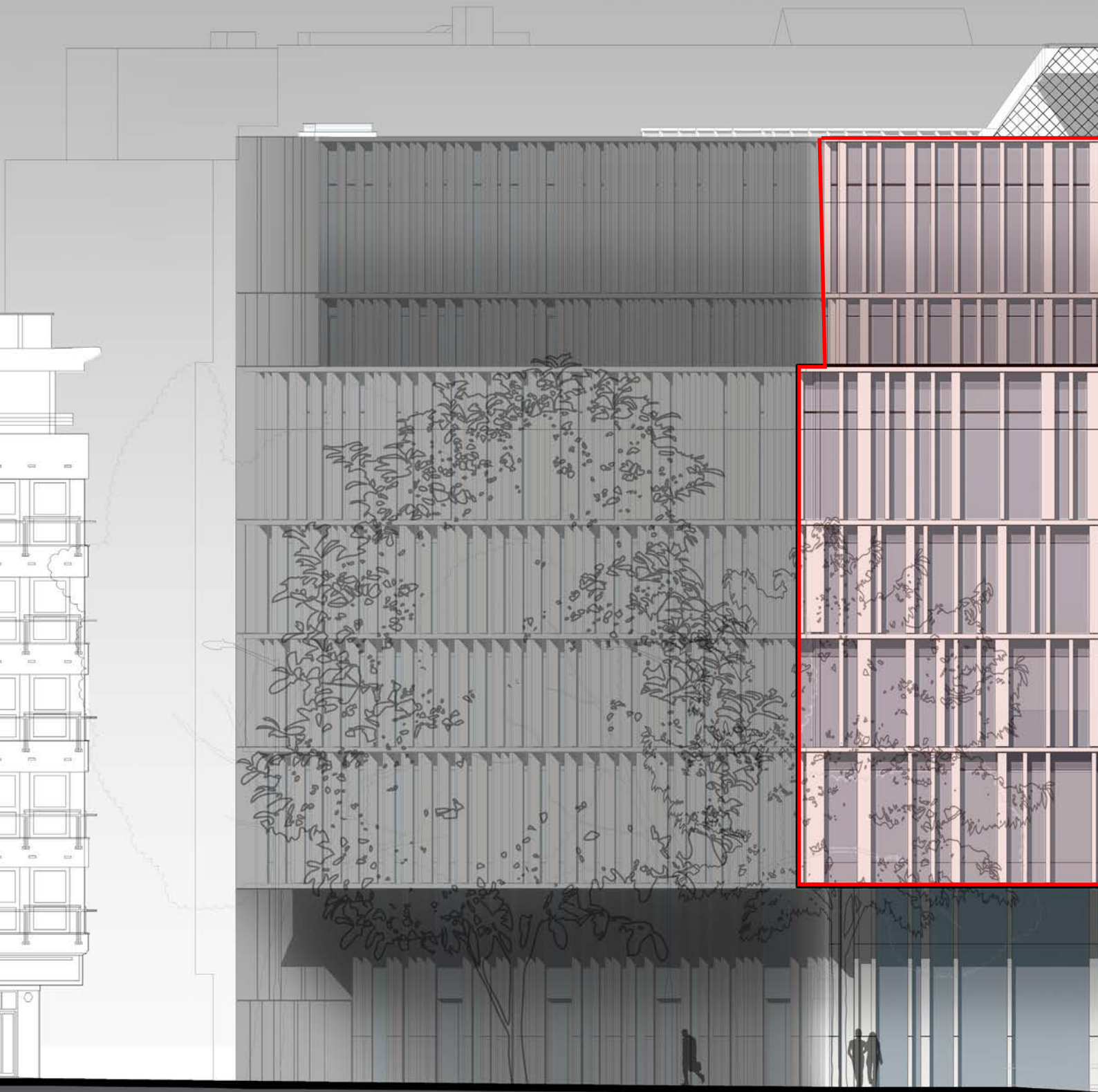


GRC fins with anodised aluminum untised panels

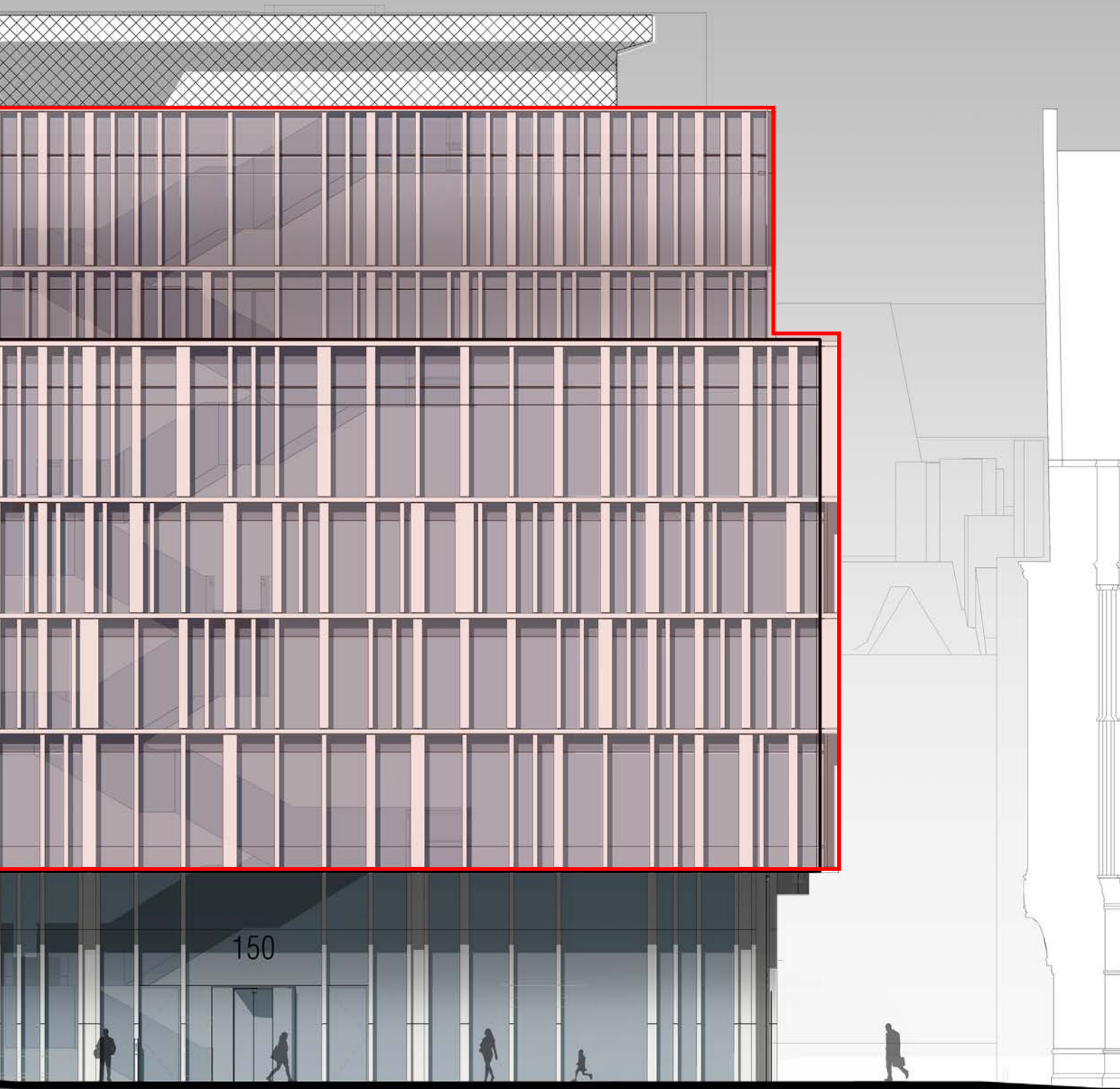




# South Elevation







Section Name

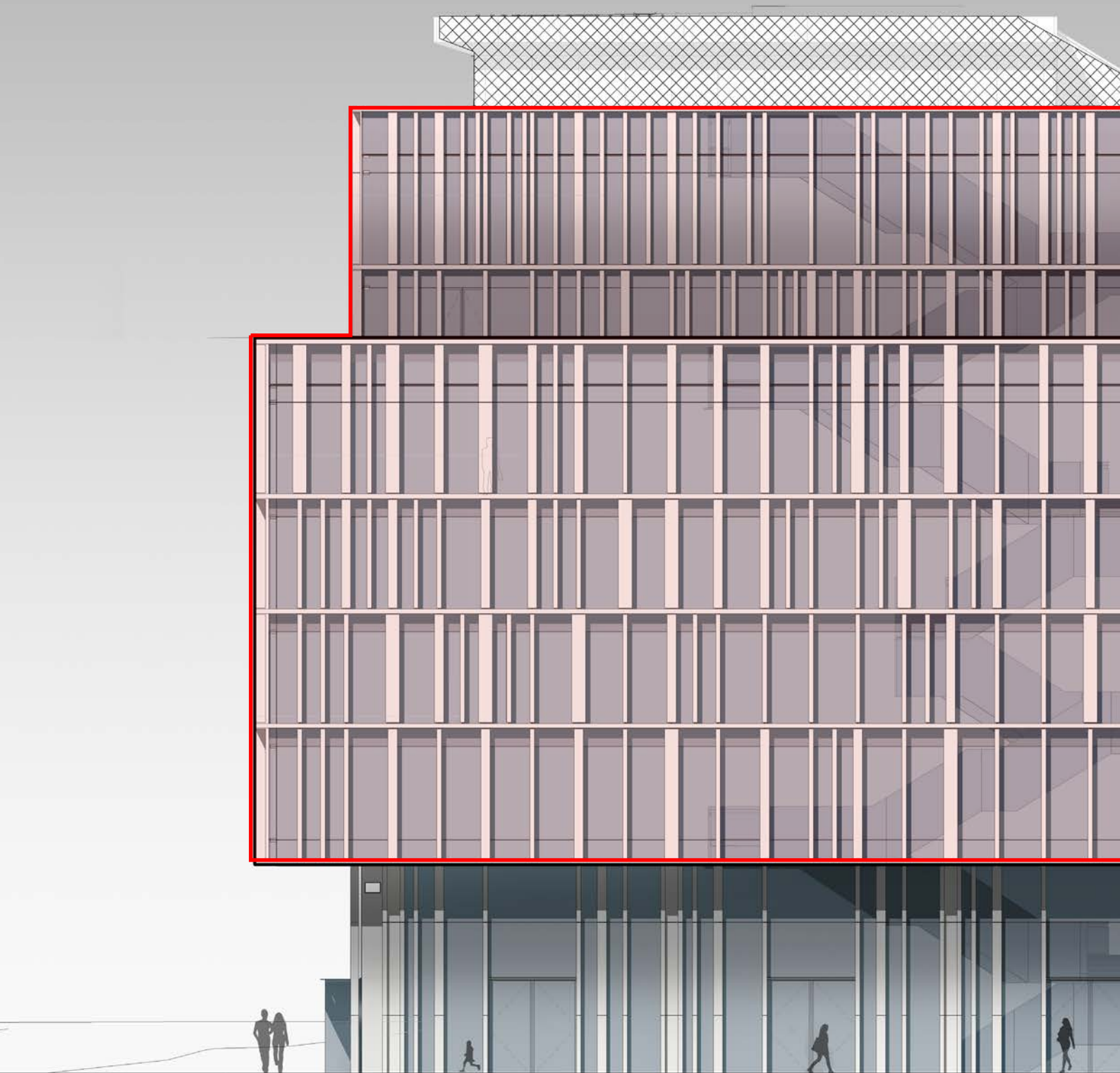




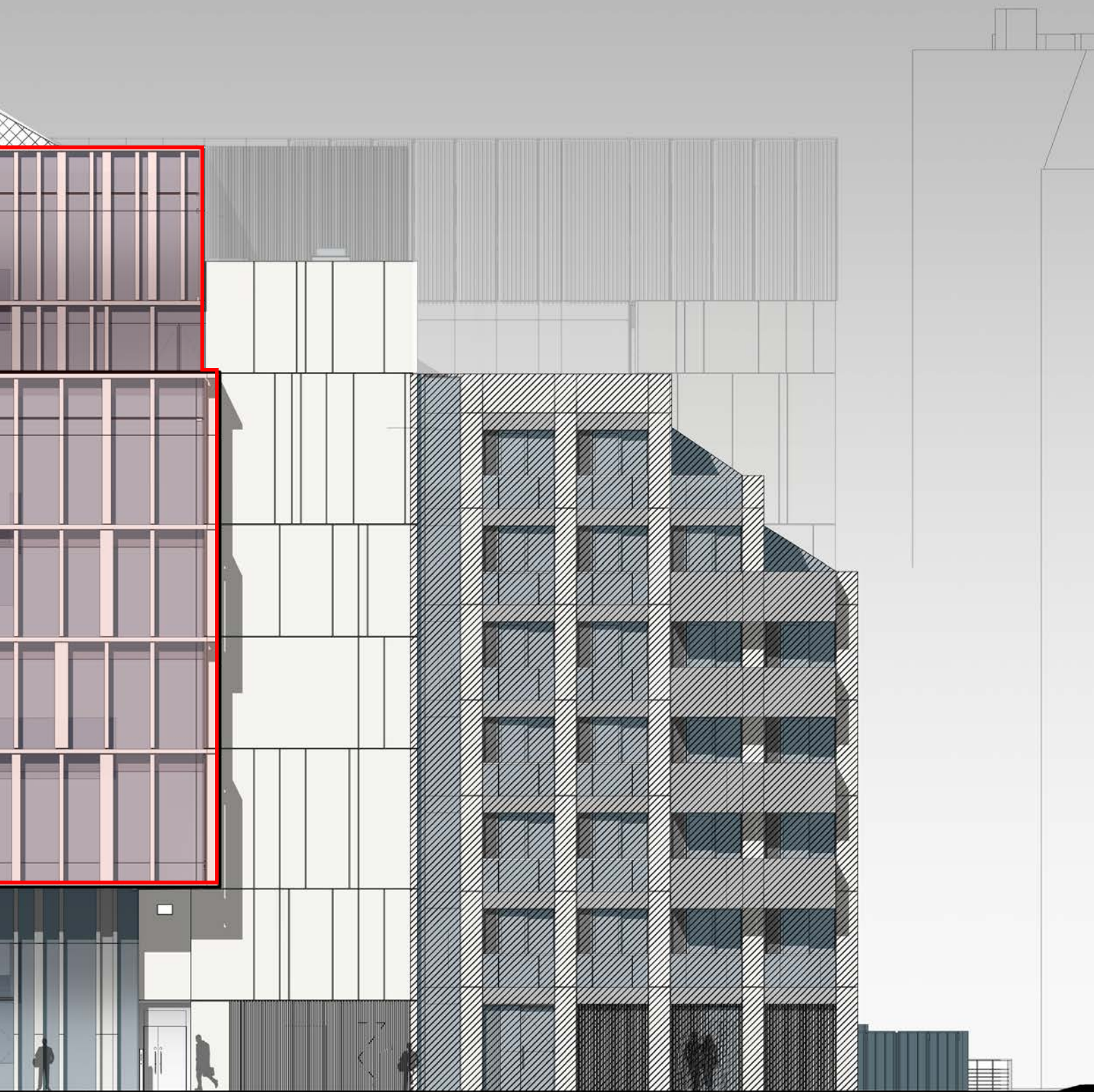


Visual Mock-up

# East Elevation



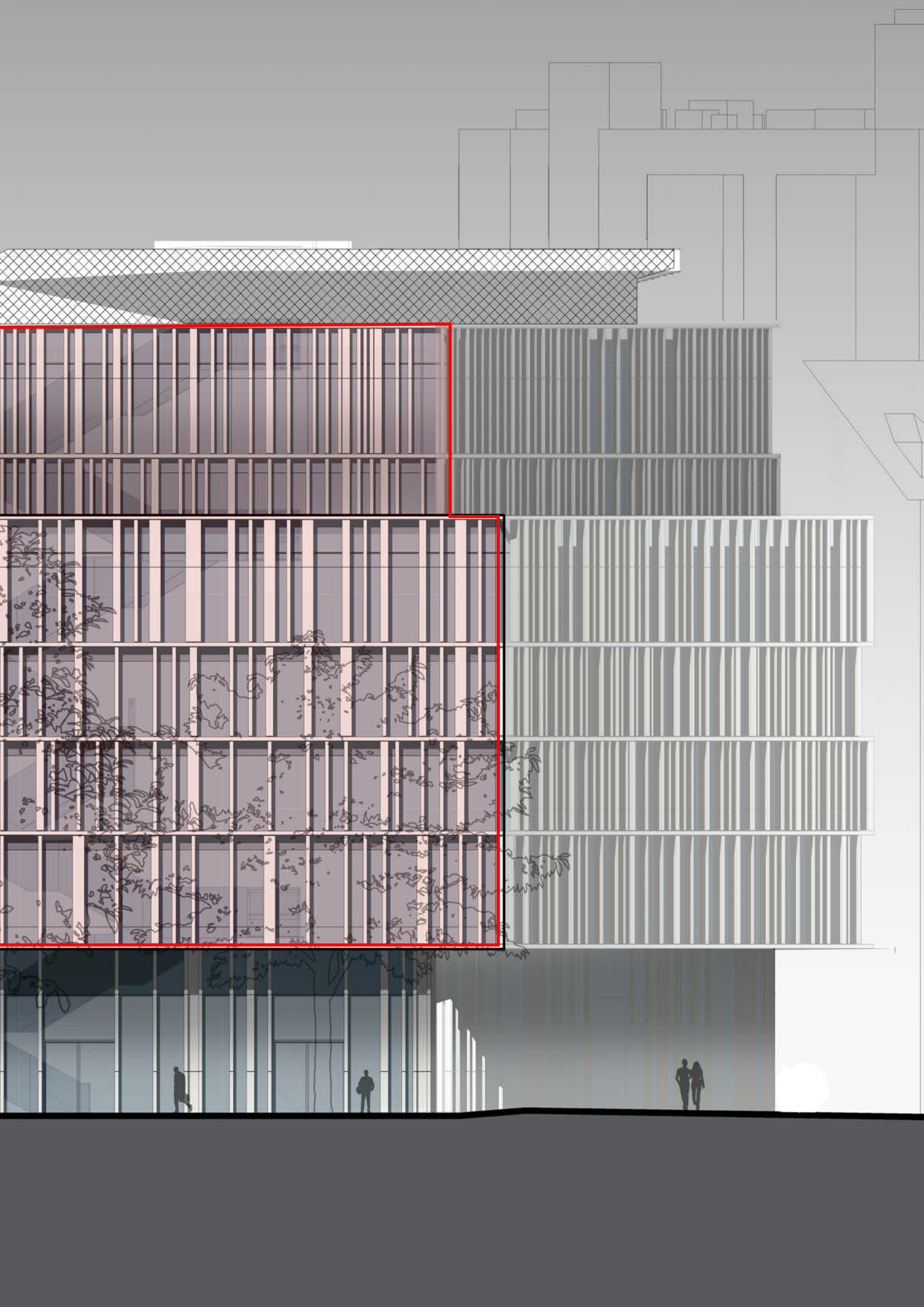




# West Elevation







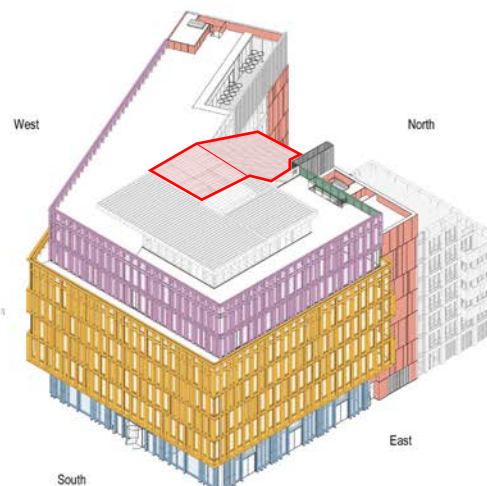
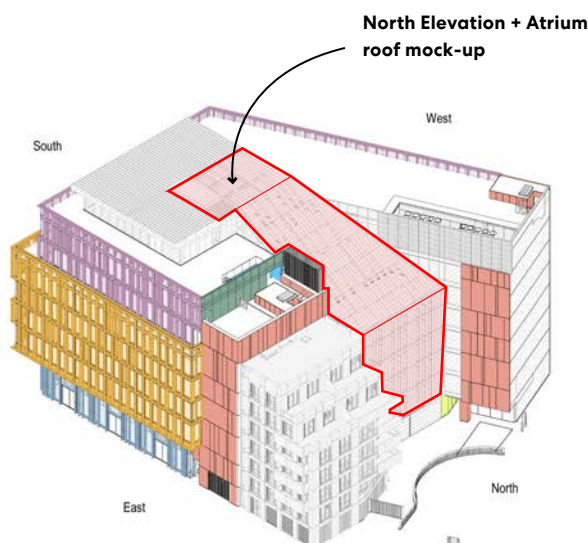
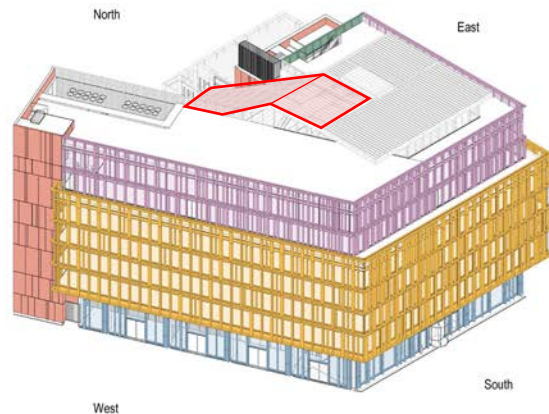
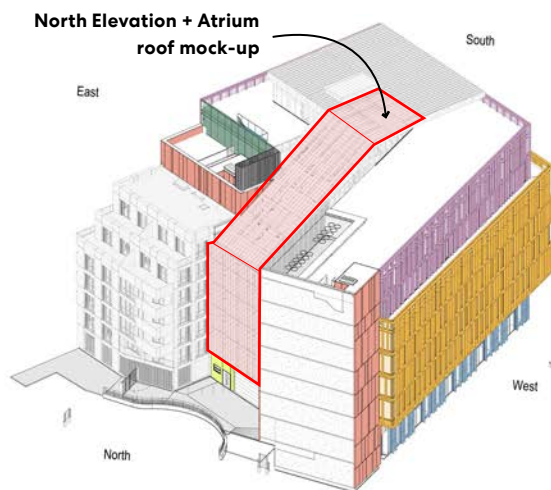
Visual Mock-up

# North Elevation & Atrium Roof

## Anodised aluminum & Vision glazing

The North elevation and sloped atrium roof will be formed of large untised glazed and solid panels. The panels will be finished with a natural anodised finish with black gasket jointing. The vision glass appears with a slight tint due to the coating requirements to achieve the required G-values as per the approved energy model.

The spandrels in front of the slab edge will have a dark grey frit to the back glass panel.

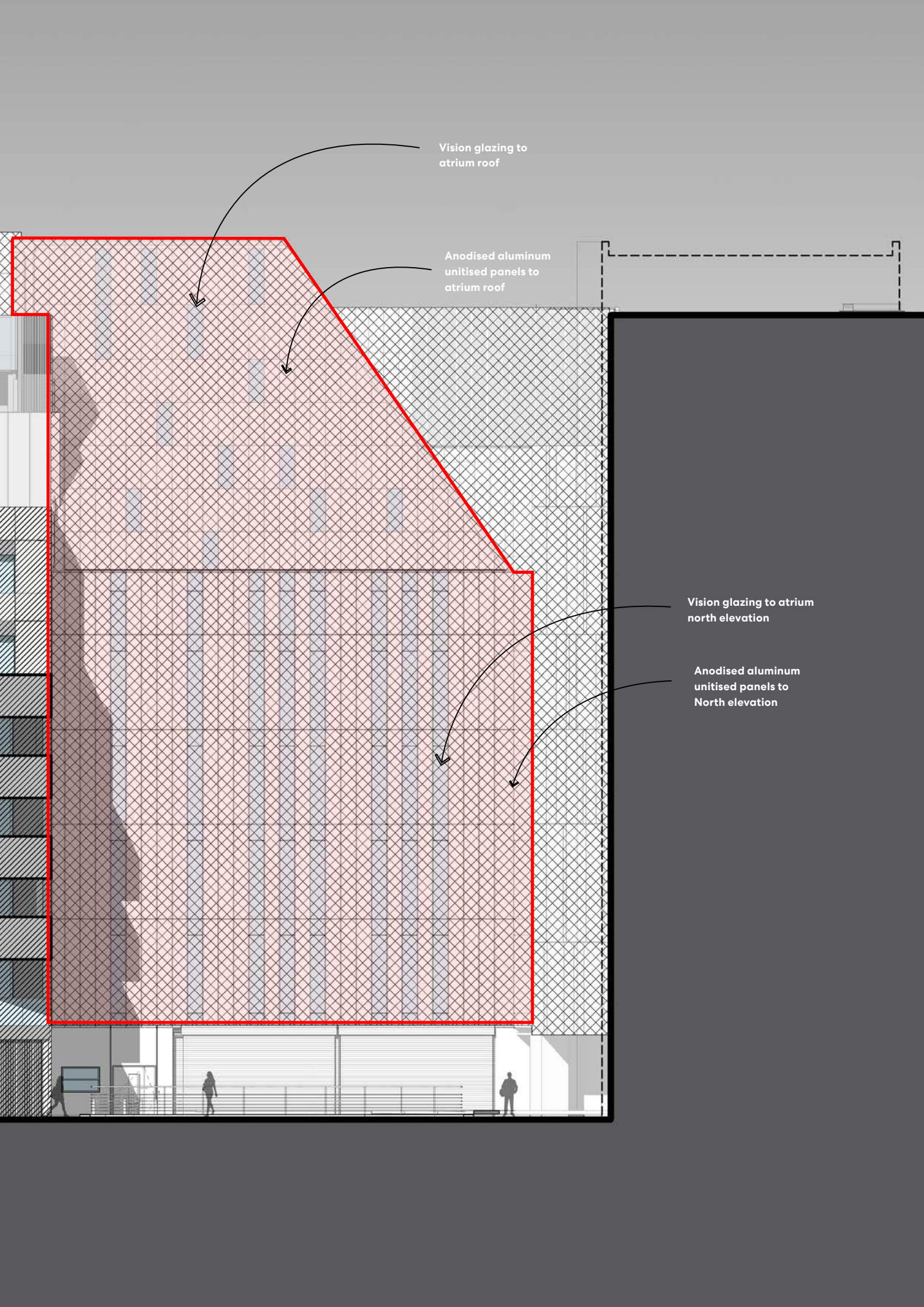












Vision glazing to  
atrium roof

Anodised aluminum  
unitised panels to  
atrium roof

Vision glazing to atrium  
north elevation

Anodised aluminum  
unitised panels to  
North elevation

Visual Mock-up

# Ground Floor Cladding + Soffit

## Ground floor cladding + soffit - EWS 101

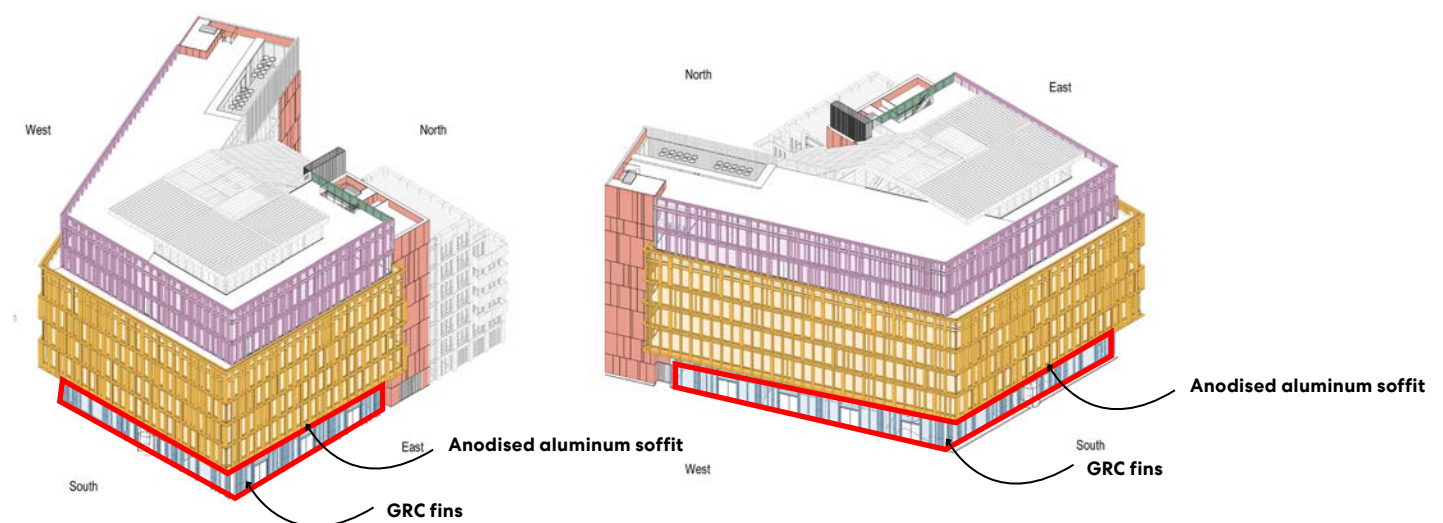
EWS 101 visual mock-up was created to show the GRC ground fins, corner junction and cantilever anodised aluminum soffit as well as the proposed linear light.

The mock-up represented the lower and upper parts of the ground floor cladding to capture all conditions of the ground floor.

The soffit to the cantilever will be finished in natural anodised finish with a white linear flush light within the soffit. It was noted that the light within the soffit will now be changed to a whiter light as the one fitted within the mock-up appeared too yellow.

The gasket between the soffit panels will be black to match the north elevation.

The vertical GRC will be as shown in the mock-up with a black insect mesh to the gaps as shown.







Flush linear LED light

Natural anodised  
soffit panels

Vertical GRC









Natural anodised  
soffit panels

Flush linear LED light

Vertical GRC

UNDERGROUND













