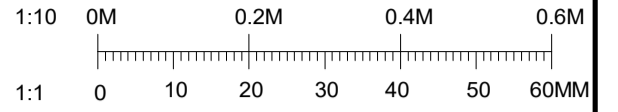
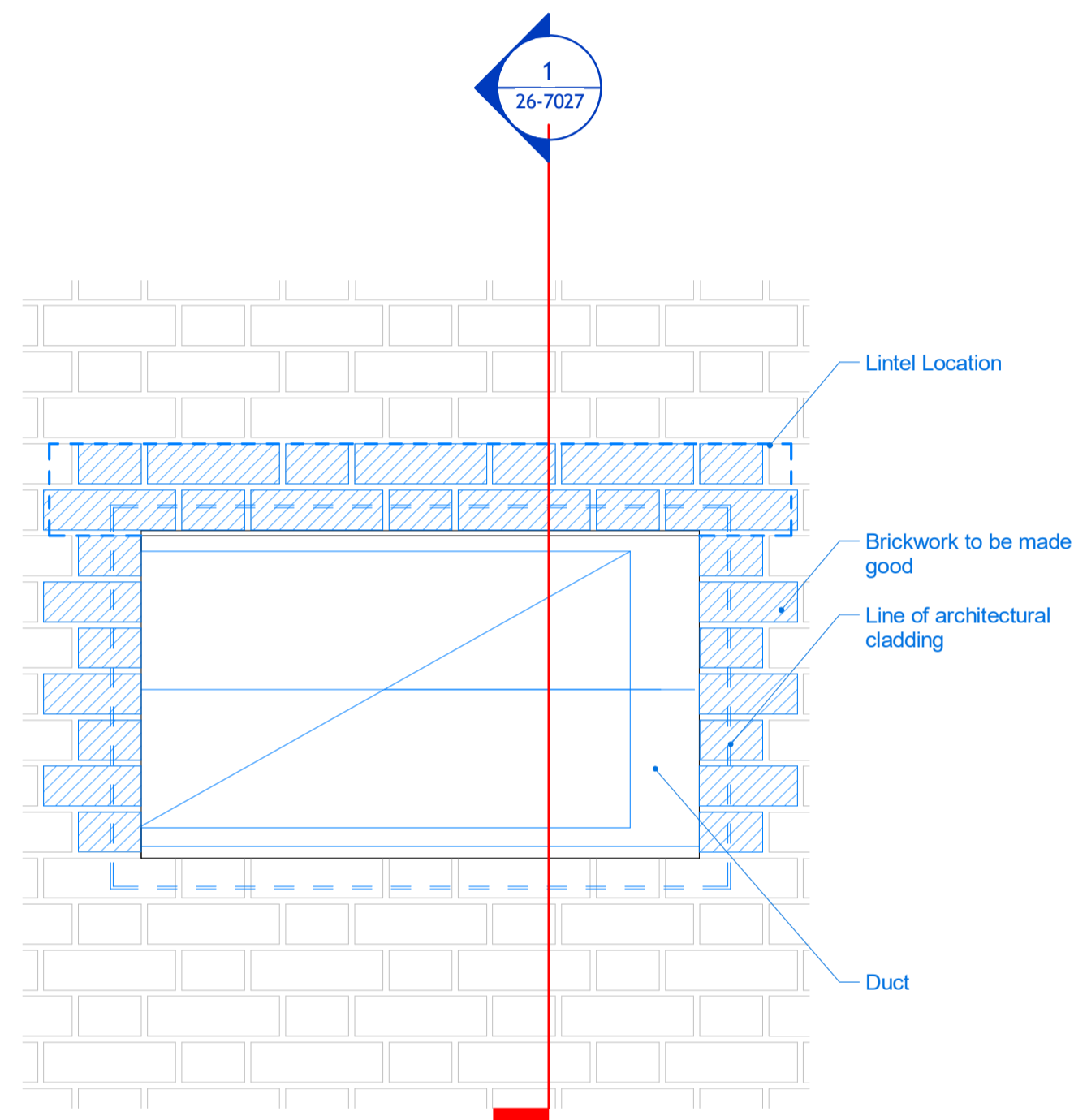


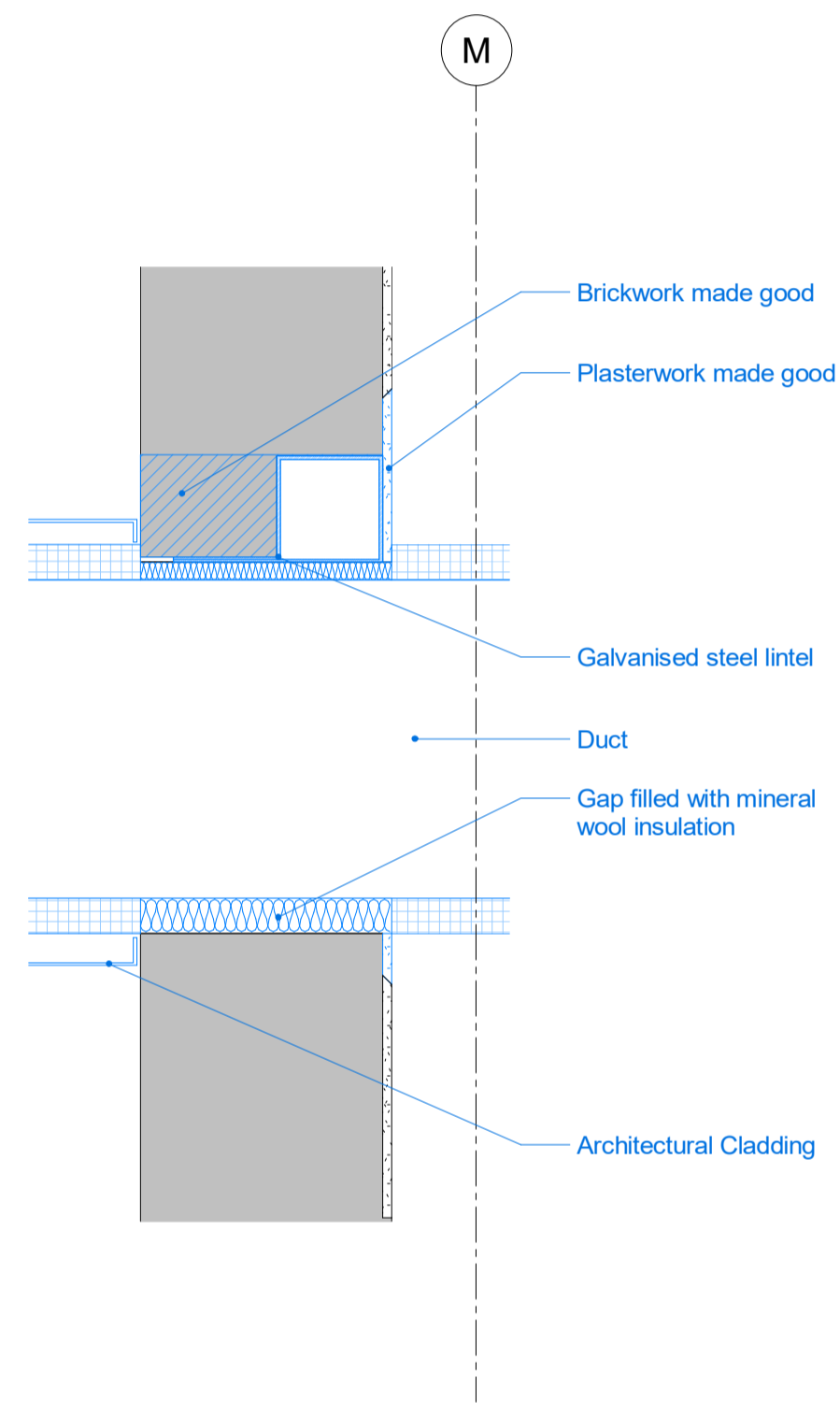
DO NOT SCALE
 THIS DRAWING IS © IAN RITCHE ARCHITECTS LTD
 Dimensions to be verified on site.
 Figured dimensions to take preference to those scaled.
 All discrepancies to be clarified with the project Architect.
 Unless otherwise stated all levels to be AOD.
 This drawing is the property of Ian Ritchie Architects Ltd. and is issued on the condition it is not reproduced, retained or disclosed to any unauthorised person, either wholly or in part without written consent.



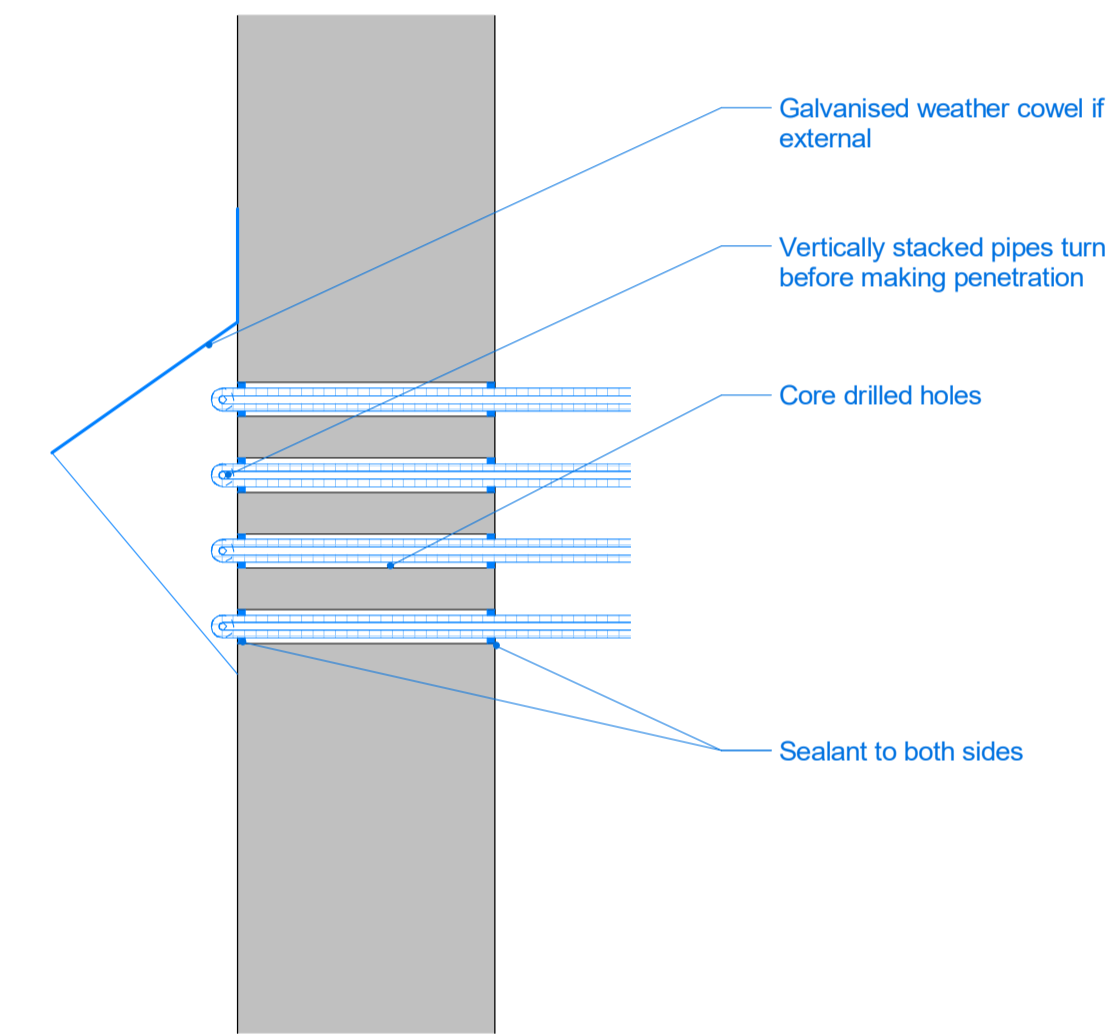
☁️ ✂️ REVISION
 ⚡️ ✂️ IN ABEYANCE



3 South Courtyard Duct Penetration Elevation
 1 : 10



1 South Courtyard Duct Penetration Section
 1 : 10



2 Pipe Penetrations Through External Wall
 1 : 10

Rev	Date	By	Ck	Ap	Description
4A	16.12.19	TR	CR	AS	First Issue (Revised Tender)

Job Title
**LONDON SCHOOL OF
 HYGIENE AND TROPICAL
 MEDICINE (KEPPEL STREET)**

Drawing Title
Wall Penetration Details

© IAN RITCHE ARCHITECTS LTD.
 110 Three Coll Street London E14 8AZ
 Tel: (44) 2073381100 Fax: (44) 2073381199

Status
 STAGE 4 FOR TENDER

Scale
 1.10@A1

Date
 16.12.19

Drawn
 TR

Checked
 CR

Approved
 AS

Job No.
 739

Drawing No.
 739-IRAL-02-DR-26-7027

Rev.
 4A