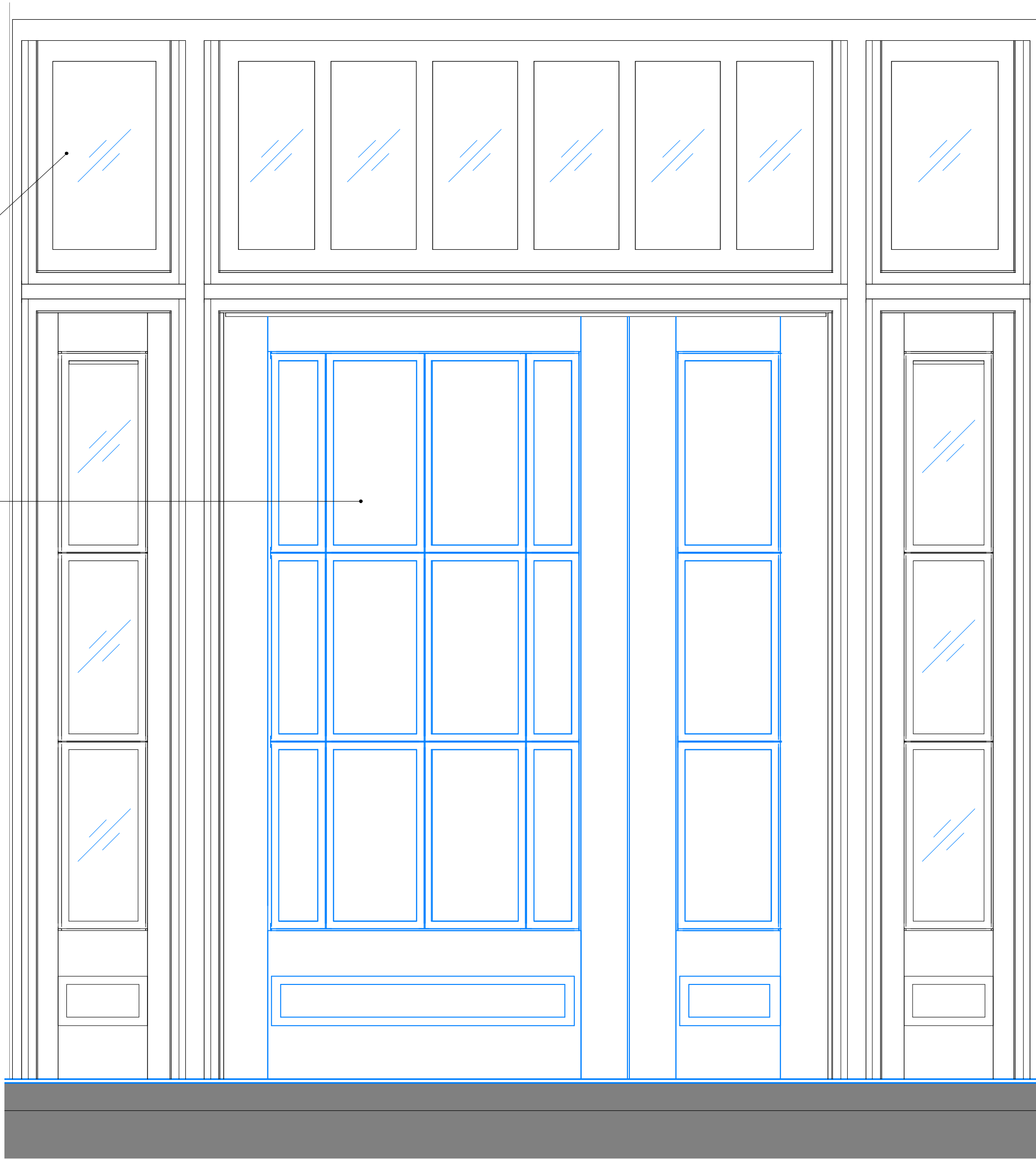
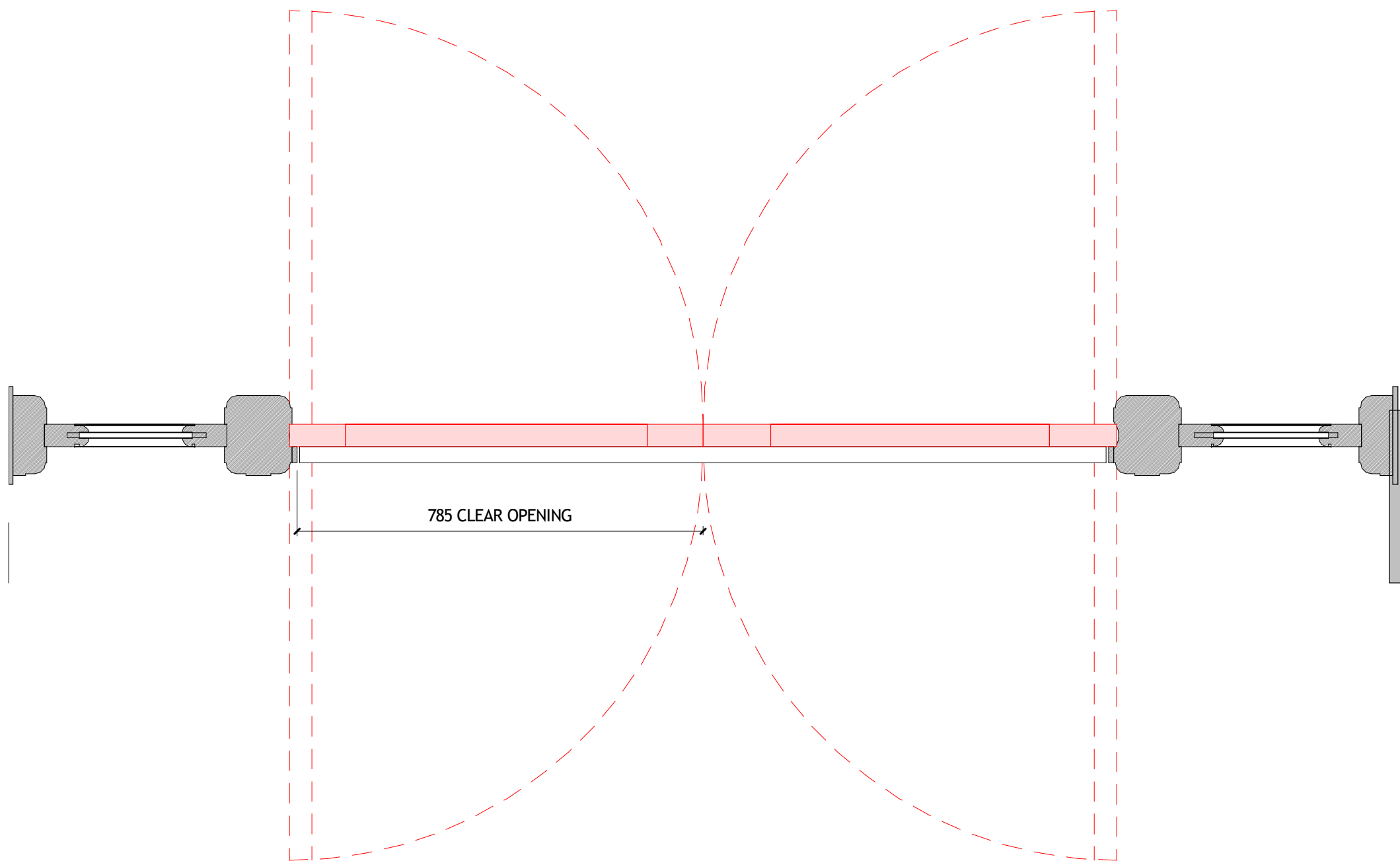


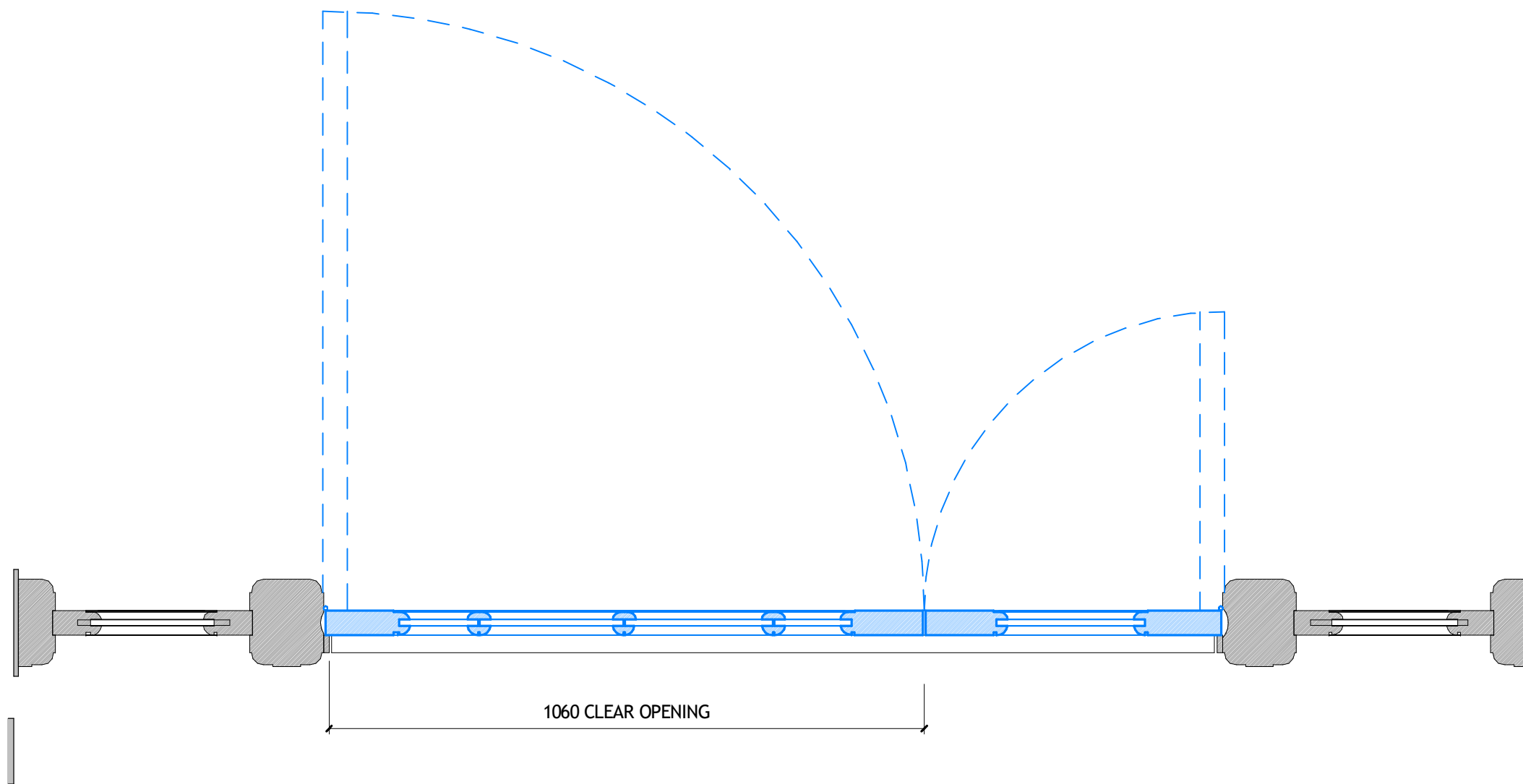
2 Existing Heritage Door Elevation
1 : 10



3 Heritage Door Replacement Elevation
1 : 10




1 Existing Heritage Door Plan
1 : 10



4 Heritage Door Replacement Plan
1 : 10

DO NOT SCALE
THIS DRAWING IS © IAN RITCHIE ARCHITECTS LTD
Dimensions to be verified on site.
Figured dimensions to take preference to those scaled.
All discrepancies to be clarified with the project Architect.
Unless otherwise stated all levels to be AOD.
This drawing is the property of Ian Ritchie Architects Ltd. and is issued on the condition it is not reproduced, retained or disclosed to any unauthorised person, either wholly or in part without written consent.

 REVISION

 IN ABEYANCE

REVISIONS:

- Elements to be removed shown in red (not bubbled)
- Proposed elements shown in blue (not bubbled)

| | | | | | |
|-----|----------|----|----|----|----------------------|
| 3B | 13.01.20 | TR | CR | AS | Revised for Planning |
| 3A | 24.06.19 | TR | CR | AS | Issued for Planning |
| Rev | Date | By | Ck | Ap | Description |

Job Title

LONDON SCHOOL OF
HYGIENE AND TROPICAL
MEDICINE (KEPPEL STREET)

Drawing Title

Heritage Door
Replacement Leaves

© IAN RITCHIE ARCHITECTS LTD.
110 Three Colt Street London E14 8AZ
Tel: (44) 2073381100 Fax: (44) 2073381199

| | | |
|----------------|------------------------------------|------------------|
| Status | | Planning |
| Scale | 1 : 10@A1 | Date 24.06.19 |
| Drawn TR | Checked CR | Approved AS |
| Job No. 739 | Drawing No. 739-IRAL-02-08-3501 | Rev. 3B |