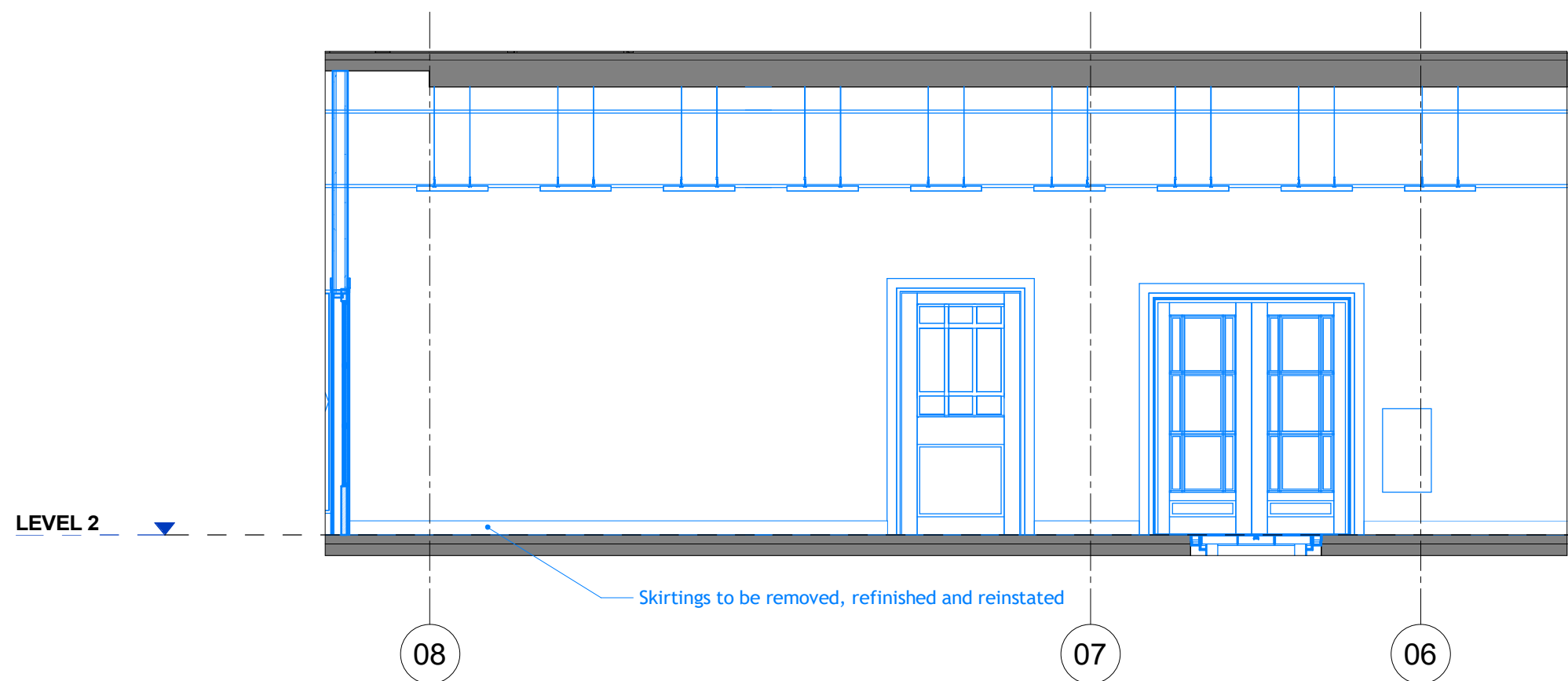
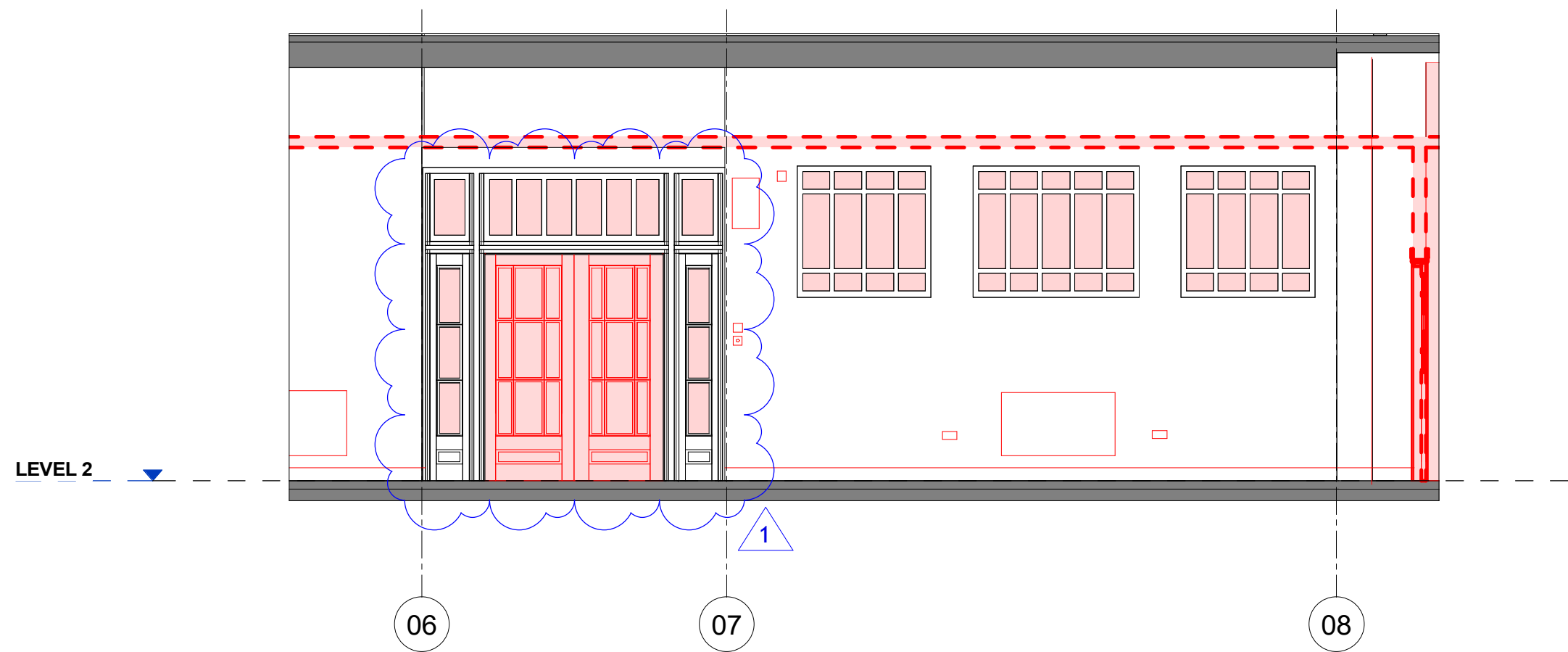




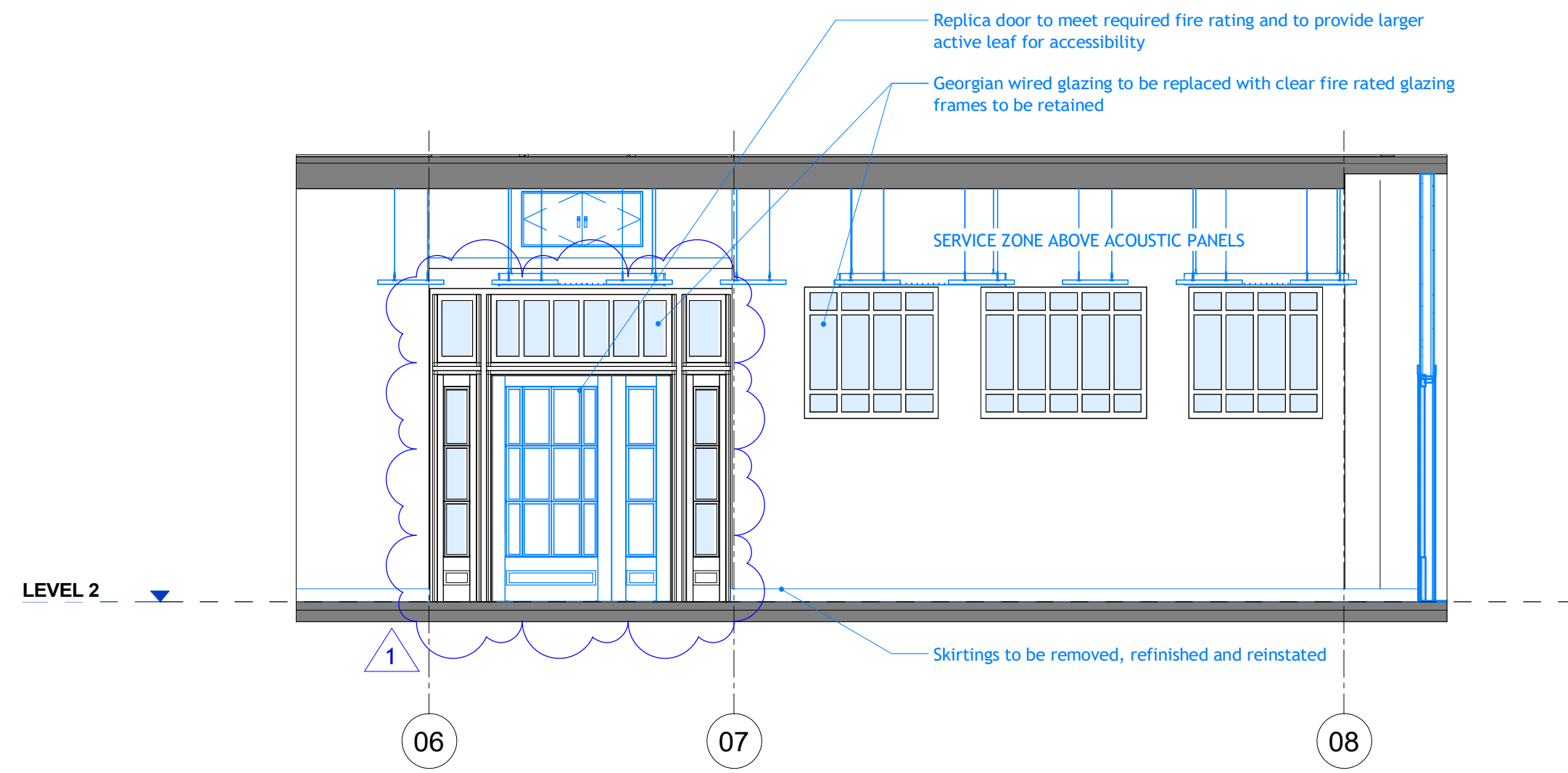
1 Planning Detail Elevation - Existing - West Wing Heritage Corridor - West
1 : 50



3 Planning Detail Elevation - Proposed - West Wing Heritage Corridor - West
1 : 50

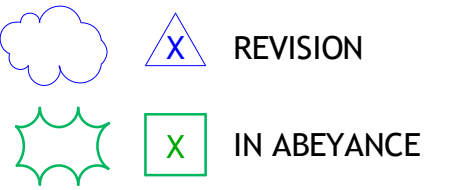


2 Planning Detail Elevation - Existing - West Wing Heritage Corridor - East
1 : 50

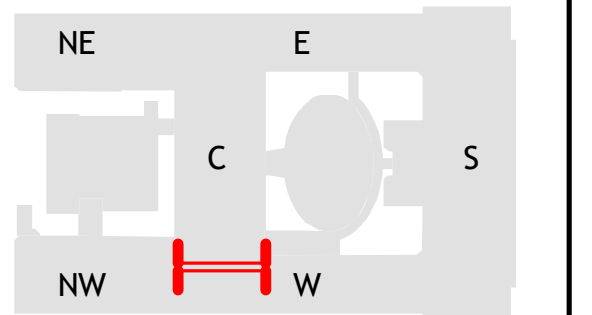


4 Planning Detail Elevation - Proposed - West Wing Heritage Corridor - East
1 : 50

DO NOT SCALE
THIS DRAWING IS © IAN RITCHIE ARCHITECTS LTD
Dimensions to be verified on site.
Figured dimensions to take preference to those scaled.
All discrepancies to be clarified with the project Architect.
Unless otherwise stated all levels to be AOD.
This drawing is the property of Ian Ritchie Architects Ltd. and is issued on the condition it is not reproduced, retained or disclosed to any unauthorised person, either wholly or in part without written consent.



- REVISIONS:
1. Door screen shown as retained with only glazing replaced
 2. Services shown below acoustic panels omitted (not bubbled)
 3. Acoustic panels raised approx. 70mm



3B	13.01.20	TR	CR	AS	Revised for Planning
3A	24.06.19	TR	CR	AS	Issued for Planning
Rev	Date	By	Ck	Ap	Description

Job Title
LONDON SCHOOL OF
HYGIENE AND TROPICAL
MEDICINE (KEPPEL STREET)

Drawing Title
Detail Sections - Level 2
- West Wing Heritage
Corridor

© IAN RITCHIE ARCHITECTS LTD.
110 Three Colt Street London E14 8AZ
Tel: (44) 2073381100 Fax: (44) 2073381199

Status	PLANNING		
Scale	As indicated@A1		Date 24.06.19
Drawn TR	Checked CR	Approved AS	
Job No. 739	Drawing No. 739-IRAL-02- 08-2501	Rev. 3B	