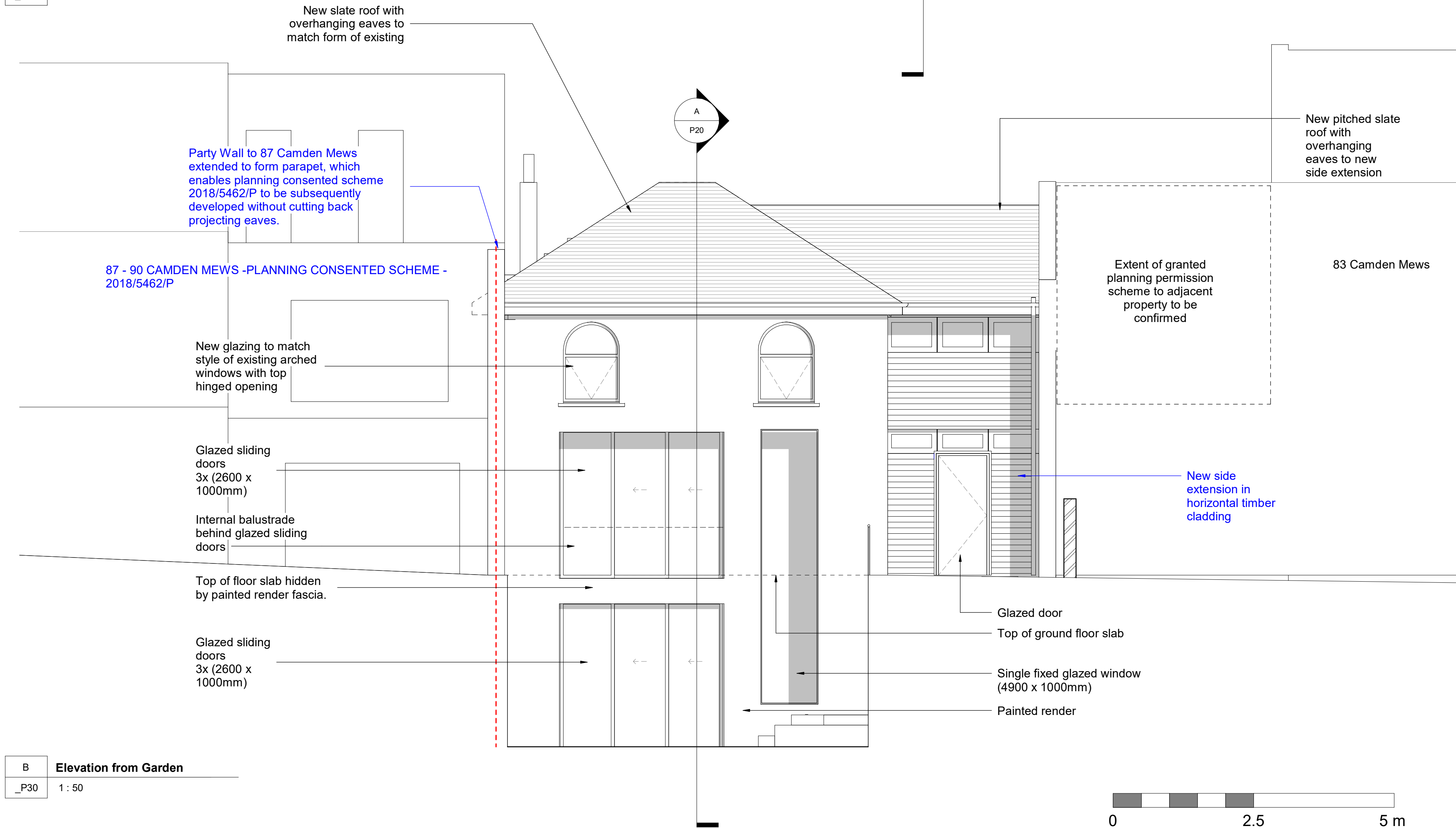


A  
\_P30  
Elevation from Camden Mews  
1 : 50



B  
\_P30  
Elevation from Garden  
1 : 50

SAFETY, HEALTH AND ENVIRONMENTAL INFORMATION:	
IN ADDITION TO THE HAZARDS/RISKS NORMALLY ASSOCIATED WITH THE TYPES OF WORK DETAILED ON THIS DRAWING, NOTE THE FOLLOWING:	
Significant Residual Risks:	
Action to be Taken:	Refer to Health and Safety Plan

NOTES:

Only use figured dimensions from issued PDF drawings (not CAD files), where dimensions do not exist please request from architect. We are happy for you to make use of our drawings as long as the information is not used as the basis of any claim against us if there are any discrepancies between our cad files and dimensions given on the drawings or on any architectural drawing. Please note, that, DWG files are created from Revit so errors may occur during exporting.

REV	DATE	DETAIL	DRN	CHK
1	18.07.14	Issued for Planning Application	WY	AA
2	08.03.18	Non-Material Amendment Application	SC	KG
3	19.11.19	Updated Non-Material Amendment Application	NB	JW
4	05.02.20	Updates for Non-Material Application	NB	JW
5	07.02.20	Updates following planning comments	NB	JW

SHEET STATUS	
Planning	
PROJECT TITLE	
85 Camden Mews	
CLIENT	
Whitehall Park	
DRAWING TITLE	
Elevations - Proposed	
DATE	SCALE
18.07.14	1 : 50 1 : 100 @A1 @A3
MODEL STATUS	DRAWN
S0	WY
	CHECKED
	AA

DRAWING NUMBER	REVISION
85_CM_P30	5

CULLINAN STUDIO

5 BALDWIN TERRACE LONDON N1 7RU TEL: 020 7704  
PROJECT EMAIL: 85\_camdenmews@cullinanstudio.com