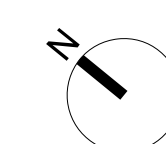
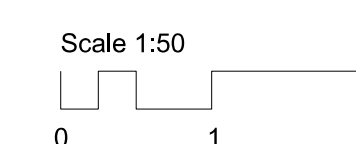
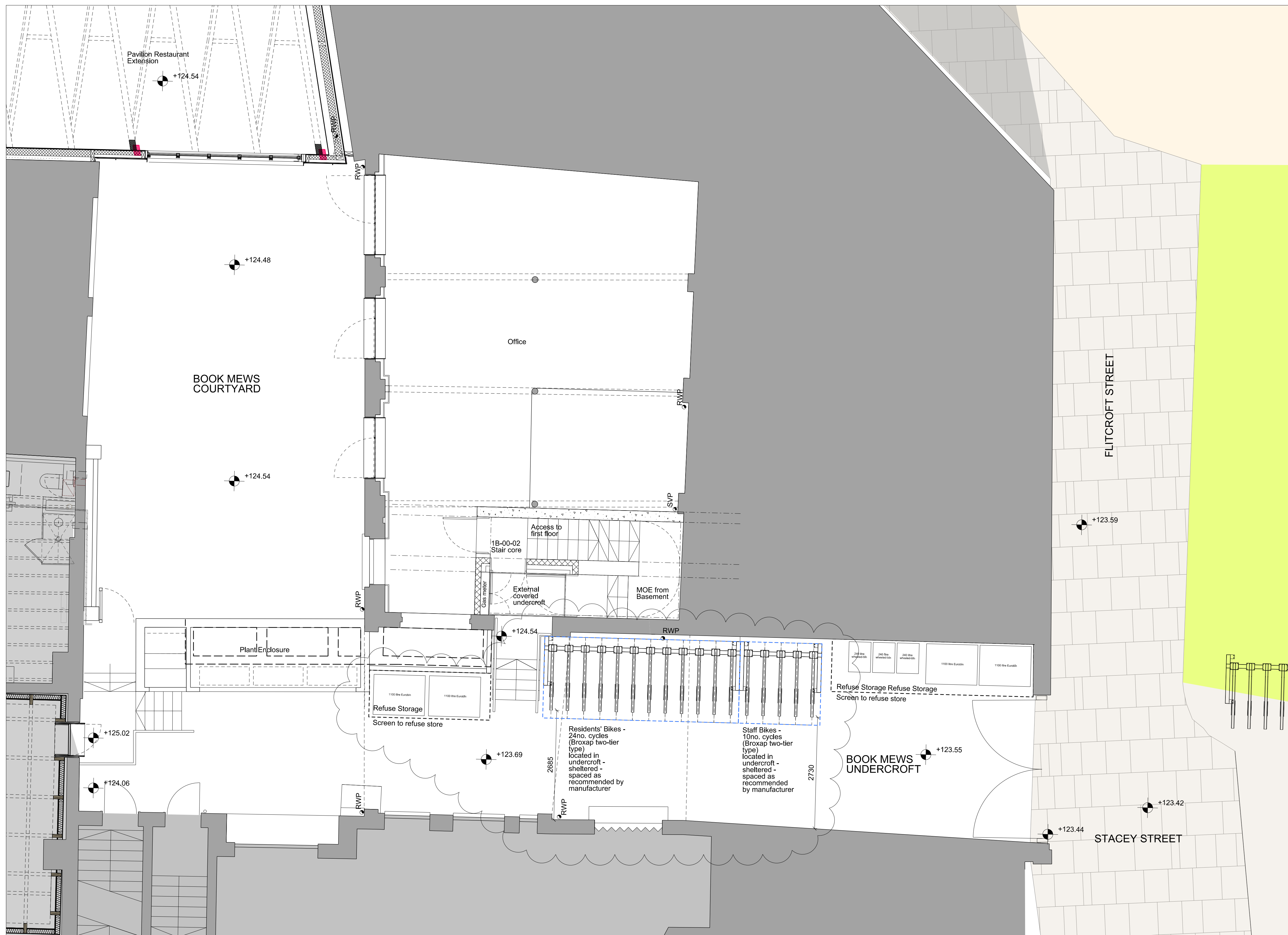


Revisions		
01	Issued for Stage 3	24.10.14
Client		
Consolidated Ltd.		
Project		
St. Giles Circus - Zone 3		
Drawing Title		
1 Book Mews Proposed Section - part of Section BB showing relationship to adjacent properties		
Drawing Number		
1401_1B(00)230		
Scale	1:50	Status For Information
Drawn by	EW	Date 29/08/14
Do not scale. All dimensions to be confirmed on site. Information contained in this drawing is the sole copyright of Ian Chalk Architects and is not to be reproduced without permission.		
All internal layouts are for illustrative purposes only.		



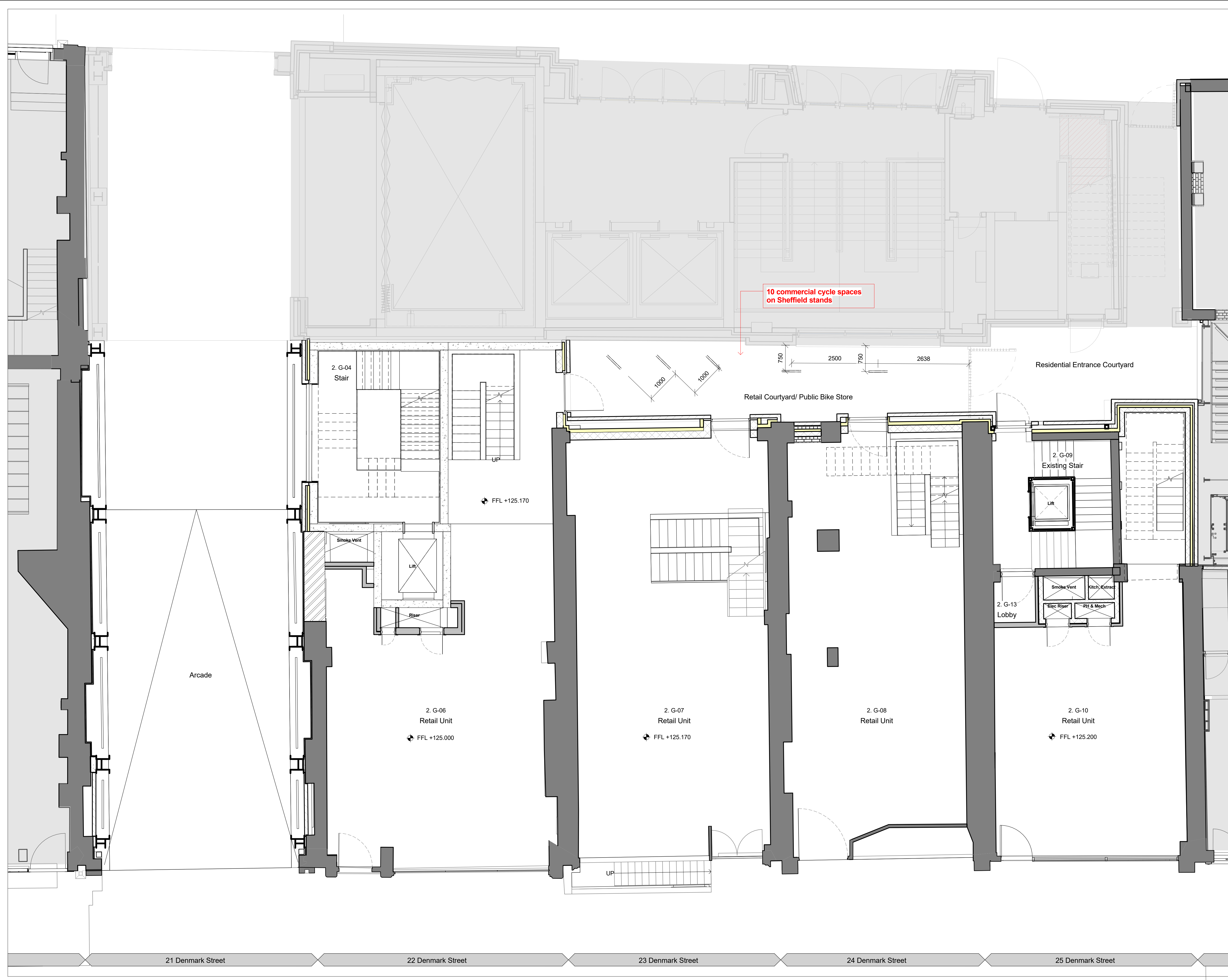
Revisions		
02	15.10.19	Updated following Transport Officer comments
01	07.05.19	First Issue
Client		
Consolidated Ltd.		
Project		
St. Giles Circus - Zone 3		
Drawing Title		
Book Mews		
Proposed		
Plan showing location of cycle storage		
Drawing Number		
1401_SK259		
Scale	1:50@A1	Status Information
Drawn by	EW	Date 07/05/19
Do not scale. All dimensions to be confirmed on site. Information contained in this drawing is the sole copyright of Ian Chalk Architects and is not to be reproduced without permission.		
All internal layouts are for illustrative purposes only.		

01 Book Mews: Proposed  
SK259 Ground Floor Plan - showing location of cycle storage

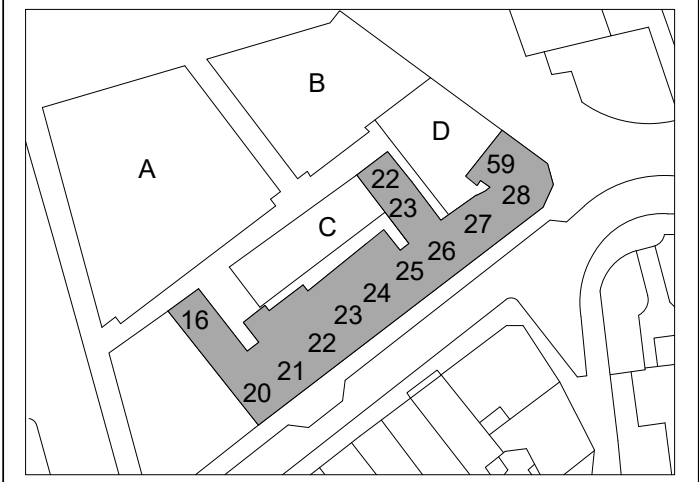
1:50

**ica**  
70 Cowcross Street  
London  
EC1M 6EJ  
02037807355  
07785 973723  
ianchalkarchitects.com





**Key Plan:**



**CDM:**



Risks  
Refer to the Risk Register for more information.

<b>Zone 1</b>
92 Commercial Cycle Spaces
<b>Zone 2</b>
22 Residential Cycle Spaces
20 Commercial Cycle Spaces
<b>Zone 3</b>
24 Residential Cycle Spaces
10 Commercial Cycle Spaces
<b>Total:</b>
46 Residential Cycle Spaces
122 Commercial Cycle Spaces
<b>Total = 168 Spaces</b>

Project: **St Giles Circus**

Project Number: **1793**

Drawing Title:  
**Proposed Zone 2 Ground Floor Cycle Provision**

Drawing No.  
**1793\_2\_PL(00)01**

Scale@A1: **1 : 50**

Issued for: **S2 - INFORMATION**

Revision:  
**P02 15.10.19 Issued for Information**

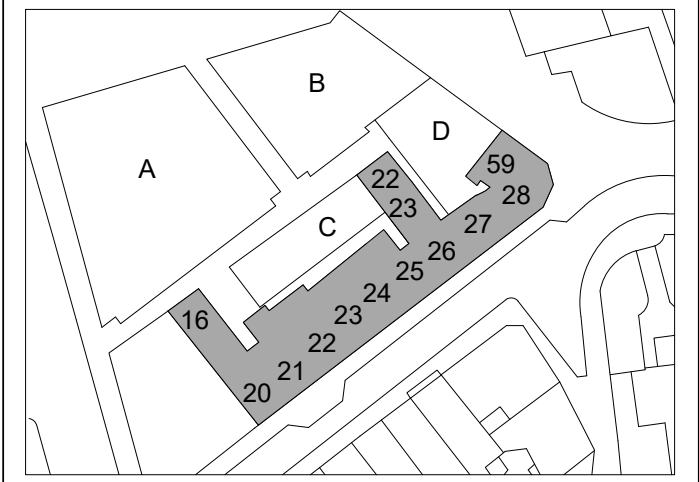


1 Oliver's Yard  
55-71 City Road  
London  
EC1Y 1HQ  
0207 833 8533  
orms@orms.co.uk  
orms.co.uk

Do not scale. All dimensions to be confirmed on site. Information contained in this drawing is the sole copyright of Orms designers + architects ltd and is not to be reproduced without permission.



**Key Plan:**



**CDM:**



Risks  
Refer to the Risk Register for more information.

- Zone 1**  
92 Commercial Cycle Spaces
- Zone 2**  
22 Residential Cycle Spaces  
20 Commercial Cycle Spaces
- Zone 3**  
24 Residential Cycle Spaces  
10 Commercial Cycle Spaces
- Total:**  
46 Residential Cycle Spaces  
122 Commercial Cycle Spaces  
**Total = 168 Spaces**

Project: **St Giles Circus**  
 Project Number: **1793**  
 Drawing Title:  
**Proposed Zone 2 Lower Ground Floor Cycle Provision**  
 Drawing No.  
**1793\_2\_PL(LG)01**  
 Scale@A1: **1 : 50**  
 Issued for: **S2 - INFORMATION**  
 Revision:  
**P02 15.10.19 Issued for Information**

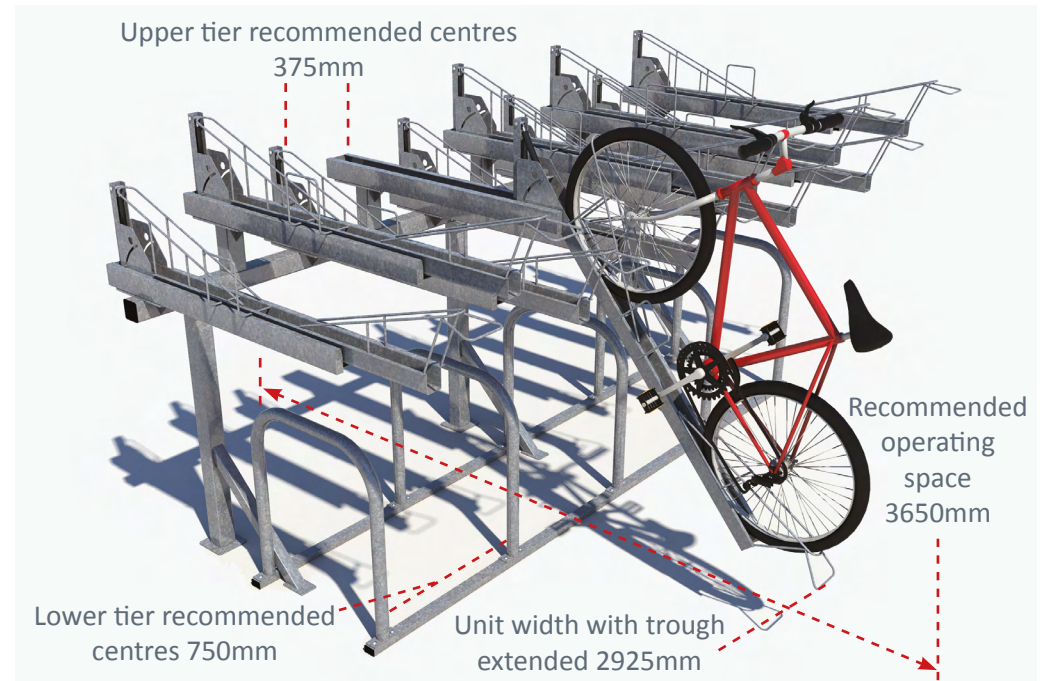
**Orms**  
 1 Oliver's Yard  
 55-71 City Road  
 London  
 EC1Y 1HQ  
 0207 833 8533  
 orms@orms.co.uk  
 orms.co.uk

Do not scale. All dimensions to be confirmed on site. Information contained in this drawing is the sole copyright of Orms designers + architects ltd and is not to be reproduced without permission.





## Easi-Riser 2-Tier Cycle Storage System, with gas strut mechanism BXMW/EASI-RISER



### Why the Easi-Riser is the right Two Tier System for you:

1. Featuring the nationally recognised “Sheffield-style” racks/stands in the lower tier, offering cyclists familiarity, two-locking points and easy-reach access, something not provided by other two-tier systems (which rely on troughs in the lower level).
2. Sheffield racks can be easily swept clean whereas the traditional trough system can provide a haven for debris and litter.
3. Staggered upper level troughs allow for varying cycle hand bars to avoid clashing and enable easy operation.
4. Features a gas strut lift assist mechanism for easy loading/unloading.





## Easi-Riser 2-Tier Cycle Storage System, with gas strut mechanism BXMW/EASI-RISER

### Construction:

Height: 2300mm from FFL to highest point (subject to cycle type)  
Accommodates various number of cycles (each "4 cycle spaces" consists of 2 Nr. upper tier troughs and 1 Nr. Sheffield hoop) Upper tier fitted with high/low retractable troughs (fitted with gas strut to assist lifting/lowering) that can be lowered for cycle stowing

Width: 3650mm (including the 'loading' bike length)

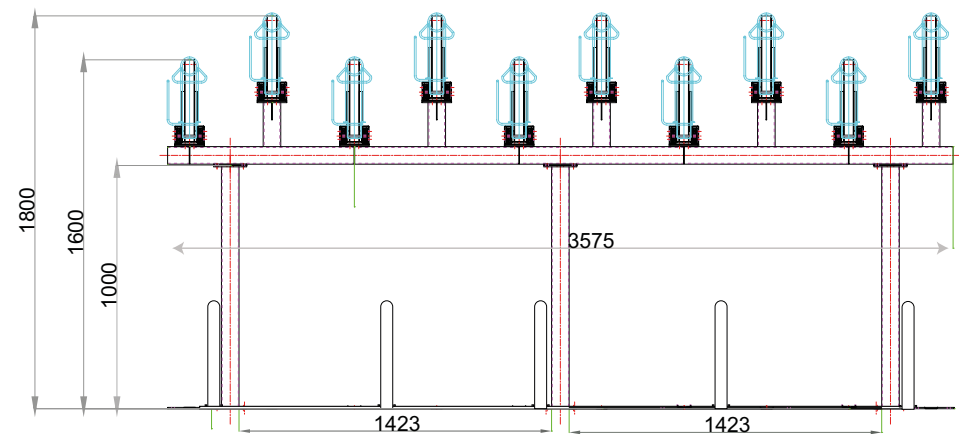
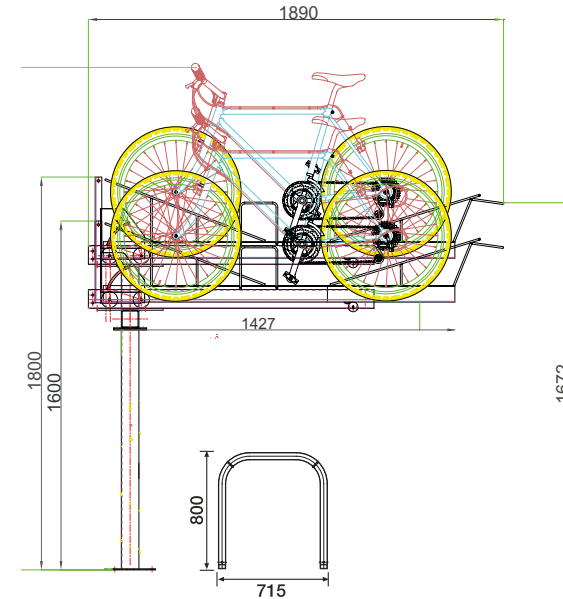
Operating Head Clearance: 2300mm minimum (subject to cycle type)

*Operating dimensions are dependent on bike design and do not consider any add-ons (e.g. child's seat, "cow horn" handlebars, larger tyres etc.).*

Frame Work Finish: Galvanized only

Lower Cycle Rack Finish: Galvanized only

Upper Troughs/Runners Finish: Galvanized only



*Bespoke versions for reduced height or length (condensed centres) is available upon request (EPOA).*