

Approved by Camden

DESIGN

Waste Management Plan

Waste is managed by the Soft FM provider within the Trust

Storage

- Clinical areas: all waste is transferred to the designated waste hold area located in outside each ward area adjacent to the lift lobby.
- Offices & Public areas: waste is collected from office areas and taken to a central holding point by the Soft FM staff.

Segregation

All waste must be correctly segregated into the clinical, domestic and recycling waste streams.

- All staff should adhere to the waste hierarchy of reduce, reuse, recycle.
- As part of the Trust's Sustainable waste management programme all clinical and non-clinical areas will be reviewed. Where appropriate a centralised waste recycling collection point will be introduced and all desk side bins will be removed.
- Clinical – all clinical waste must be correctly segregated. Incorrectly segregated clinical wastes are deemed as non-compliant.

Tagging/Labeling

- All clinical and non-clinical waste bags and containers (including cytotoxic, hazardous and offensive) must be tagged using a unique number tag supplied by the Soft FM provider.
- Sharps bins should be labelled with: the location, date of starting its use and initial of staff. When the sharps bin is full it must be securely closed, tagged and label sign off completed prior to placing in the waste hold for collection.

Confidential Waste

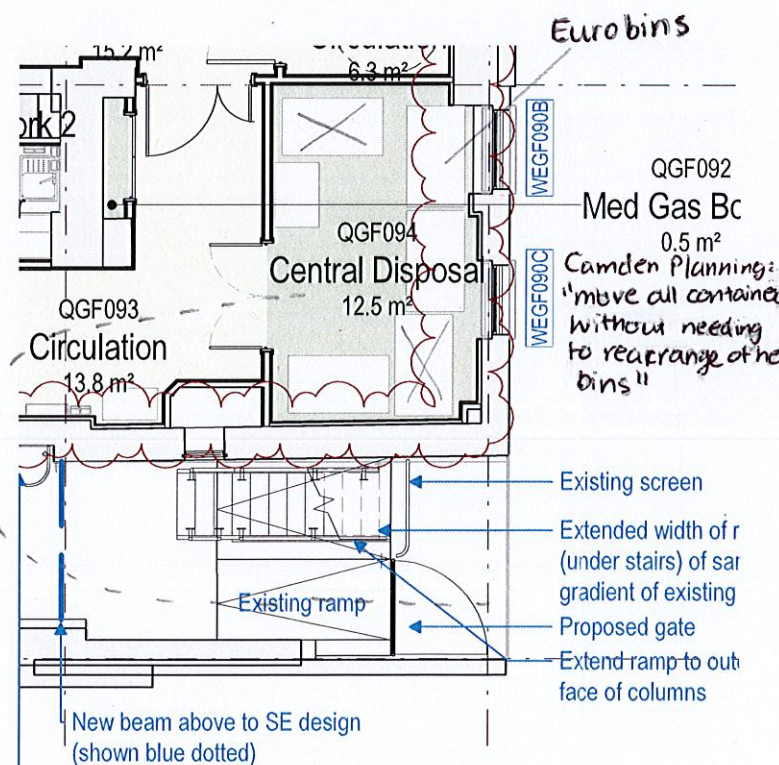
- Trust standard secure, lockable confidential waste bins are located in office areas.

Collection from the Italian Hospital

A internal central disposal is located opposite the new FM entrance, with space for separate bins for the following waste types. A brief statement to how it is intended this waste will be removed from the Italian Hospital has been provided, however a more detailed waste strategy will be submitted to discharge the condition for the original application.

- ✓ **Recycling and domestic waste** – euro bins to be moved outside onto Gage Street on collection day by GOSH. Refuse truck to pull up on Boswell St (as per current arrangements, just further down) and collect from Gage Street
- ✓ **Clinical waste** – collected from Italian Hospital, either from Boswell Street or Gage Street if vehicle can fit/reverse down
- ✓ **Offensive waste** – collected from Italian Hospital, either from Boswell Street or Gage Street if vehicle can fit/reverse down
- ✓ **Confidential waste** – collected from Italian Hospital, either from Boswell Street or Gage Street if vehicle can fit/reverse down

Complies with original application



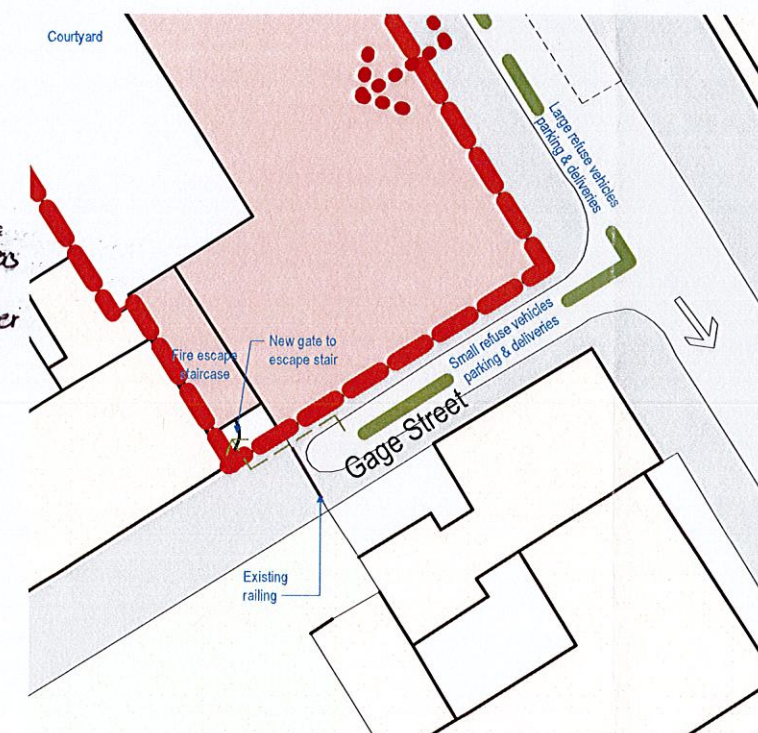
Extract from ground floor plan - central disposal

Cycle Parking Provision

The Italian Hospital will not have any dedicated cycle parking spaces but will be part of a shared side-wide facility.

Refer to Transport Assessment, 23164101 / July 2017

As stated in the original waste strategy
770 litre waste carts = 1371 x 1360 x 767 WHB (mm)
Door widths = 1210 mm



Extract from proposed site plan