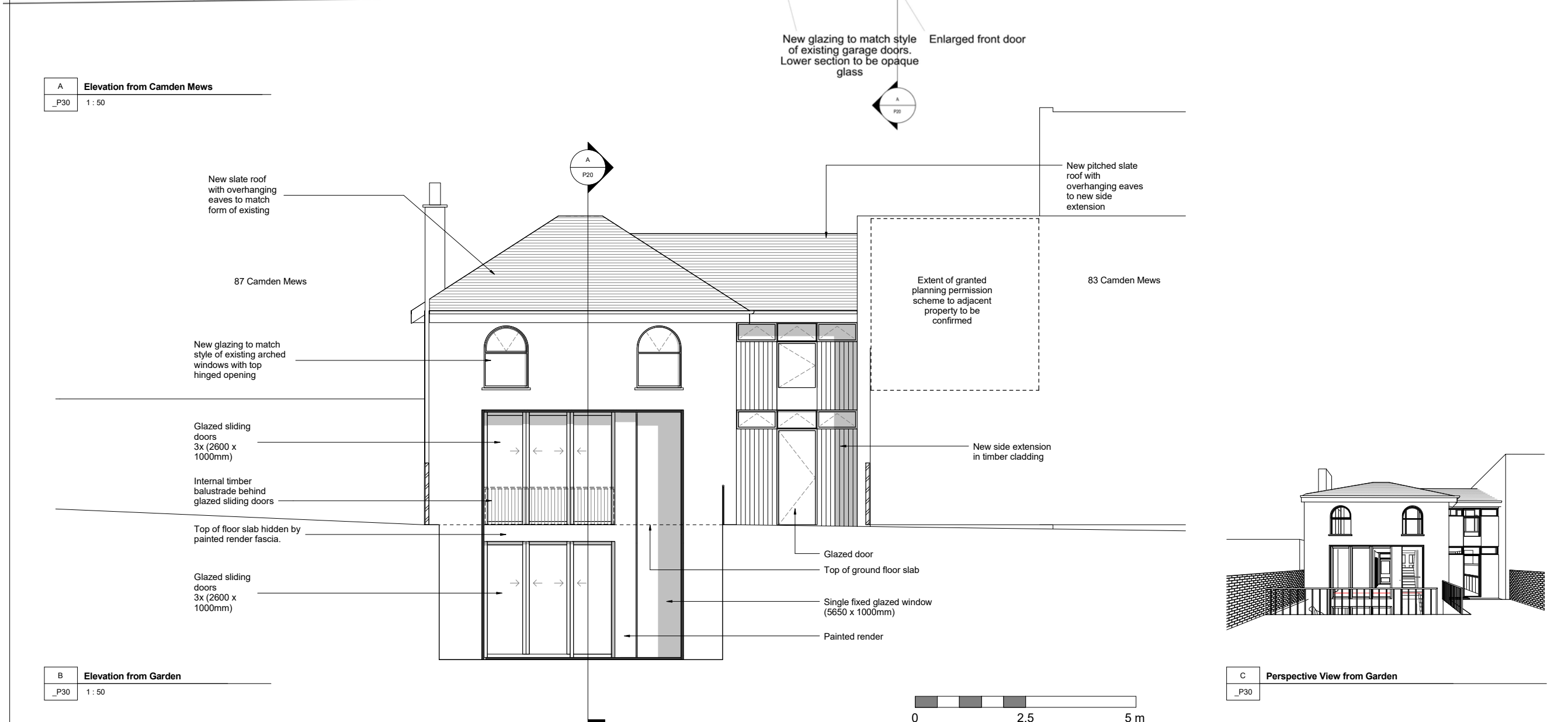


A Elevation from Camden Mews
_P30 1:50



B Elevation from Garden
_P30 1:50



C Perspective View from Garden
_P30

SAFETY, HEALTH AND ENVIRONMENTAL INFORMATION:
IN ADDITION TO THE HAZARDS/RISKS NORMALLY ASSOCIATED WITH THE TYPES OF WORK DETAILED ON THIS DRAWING, NOTE THE FOLLOWING:

Significant Residual Risks	
Action to be Taken:	Refer to Health and Safety Plan

NOTES:

Only use figured dimensions from issued PDF drawings (not CAD files), where dimensions do not exist please request from architect. We are happy for you to make use of our drawings as long as the information is not used as the basis of any claim against us. If there are any discrepancies between our cad files and dimensions given on the drawings or on any architectural drawing. Please note that DWG files are created from Dwg so errors may occur during exporting.

REV	DATE	DETAIL	DRN	CHK
P01	18.07.14	Issued for Planning Application	WY	AA
P02	08.03.18	Non-Material Amendment Application	SC	KG

SHEET STATUS			
Planning			
PROJECT TITLE			
85 Camden Mews			
CLIENT			
DRAWING TITLE			
Elevations - Proposed			
DATE		SCALE	
18.07.14		1:50 @A1 1:100 @A3	
MODEL STATUS		DRAWN CHECKED	
S0		WY AA	
DRAWING NUMBER			REVISION
85_CM - _P30			P02

CULLINAN STUDIO
5 BALDWIN TERRACE LONDON N1 7RU TEL: 020 7704 1975
PROJECT EMAIL: 85_camdenmews@cullinanstudio.com
© Cullinan Studio LTD