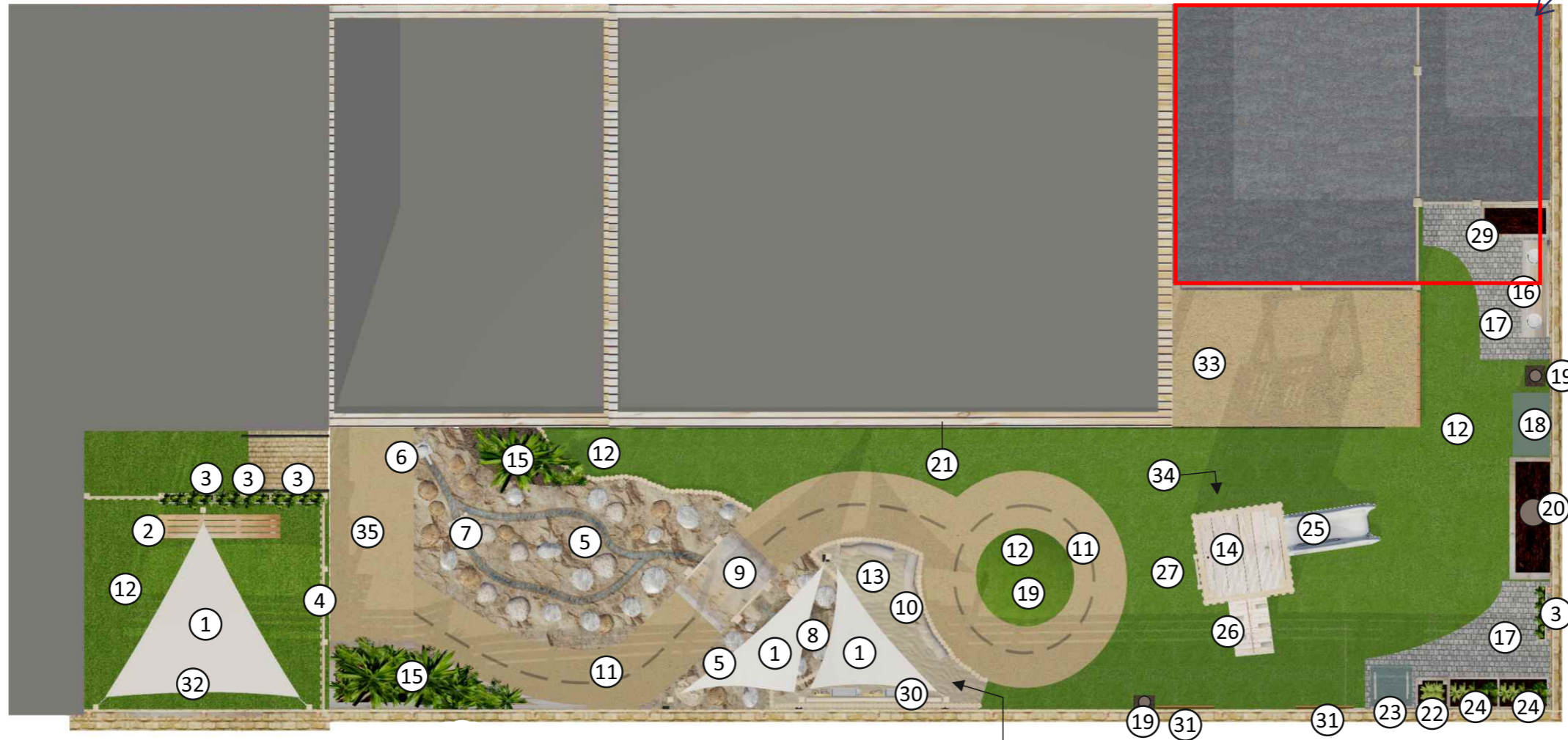


Area subject to separate planning application ref:2019/5088/P



Key

- | | | | | |
|-------------------------------------------------------------|--------------------|-----------------------------------------------------------------------------------------------------------------------------|----------------------------------------------------------|----------------------------------------------------------|
| ① Canvas sail shades attached to steel posts clad in timber | ⑦ Sluice gate | ⑬ Sandpit | ⑳ Existing tree | ⑳ Existing tree |
| ② Timber bench | ⑧ Water play area | ⑭ Play structure. With 900mm high slide, pull up ramp, trike storage/den underneath and external and internal ladder access | ㉑ Rope handrail to verandah area | ㉑ Existing tree |
| ③ Wall planters | ⑨ Humpback bridge | ⑮ Planting | ㉒ Potato planter | ㉒ Potato planter |
| ④ Timber balustrade - by others | ⑩ Seating logs | ⑯ Mud kitchen | ㉓ Composter | ㉓ Composter |
| ⑤ Rocky terrain | ⑪ Wet pour track | ⑰ Cobbles | ㉔ Raised planter | ㉔ Raised planter |
| ⑥ Hand water pump | ⑫ Artificial grass | | ㉕ Slide | ㉕ Slide |
| | | | ㉖ Pull up ramp | ㉖ Pull up ramp |
| | | | ㉗ Ladder | ㉗ Ladder |
| | | | ㉘ Access point for toddlers into sandpit | ㉘ Access point for toddlers into sandpit |
| | | | ㉙ Digging pit | ㉙ Digging pit |
| | | | ㉚ Magnetic water wall | ㉚ Magnetic water wall |
| | | | ㉛ Blackboard | ㉛ Blackboard |
| | | | ㉜ Sensory panel With textures, mirror and musical chimes | ㉜ Sensory panel With textures, mirror and musical chimes |
| | | | ㉝ Wet pour finish to verandah. Beige | ㉝ Wet pour finish to verandah. Beige |
| | | | ㉞ Access to den area under tower | ㉞ Access to den area under tower |
| | | | ㉟ Wet pour finish to raised area. Beige | ㉟ Wet pour finish to raised area. Beige |