

C2013
PLAY COORD
8.14

11
REA

T2005
CHAPEL ANTE
45.24

T2006
LOBBY
4.97

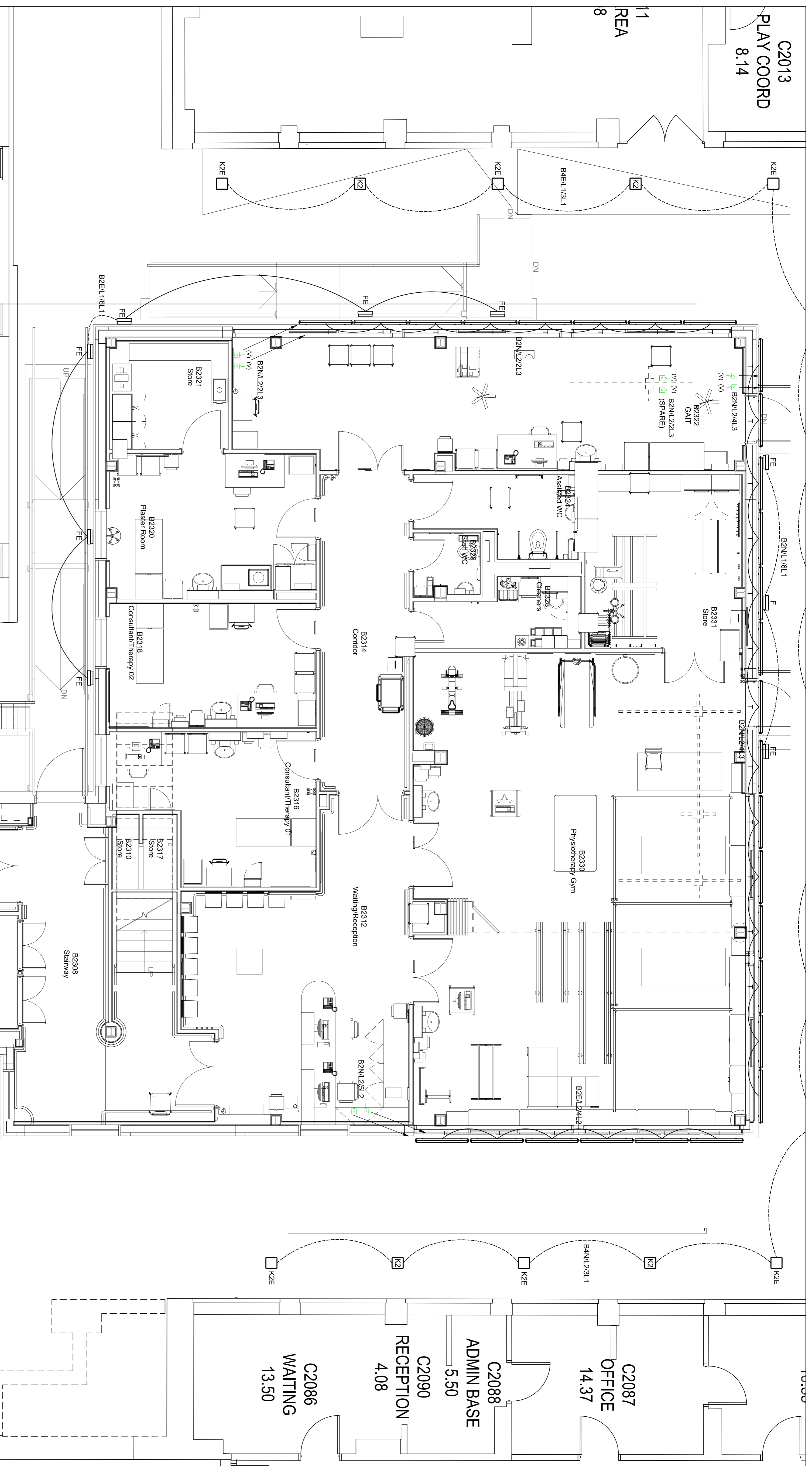
B2ST-03
STAIRS
29.14

C2087
OFFICE
14.37

C2088
ADMIN BASE
5.50

C2090
RECEPTION
4.08

C2086
WAITING
13.50



4NO. ADDITIONAL TYPE 'N' LUMINAIRES TO BE LOCATED AT LEVEL 01 TO ILLUMINATE EXISTING STATUE IN THIS AREA. TO BE FED FROM LOCAL LEVEL 01 DISTRIBUTION BOARD. 2NO. TYPE 'N' TO BE WALL MOUNTED AT HIGH LEVEL. 2NO. WALL MOUNTED AT LOW LEVEL.

RECORD DRAWING

RD	RECORD DRAWING	17/10/19
REV	DETAILS	DATE

Scale: 1:50 @ A1
Date: 31/11/2019
Project: VCB IMRI UNIT

Drawn By: RM
Checked By: DH

Relabond
B U I L D I N G & S E R V I C E S
Unit 36 Oakwood Hill Industrial Estate, Oakwood Hill, Colchester, Essex CO3 3TZ
www.relabond.com
0206 529 0960

Title: EXTERNAL LIGHTING LAYOUT

Drawing No. 180011-REL-00-EX-DRE-0001
Revision: RD