

Simon Pryce Arboriculture

Client:
BSD Partnership

Site:
1 - 5 Agar Grove, London, NW1 9SL

Title:
Trees and proposed building work -
existing site

Date: 21 March 2019

Ref: 18/108/2

Rev:

Scale: 1:200 at A4

CP House,
Otterspool Way,
Watford,
WD25 8HP
tel 01923 467600
info@simonpryce.co.uk
www.simonpryce.co.uk

Original drawing:
Neil Hawes & Associates Ltd

Root protection areas [RPAs] are
colour coded according to retention category
from BS5837:2012, Trees in relation to
demolition, design and construction:

A = green

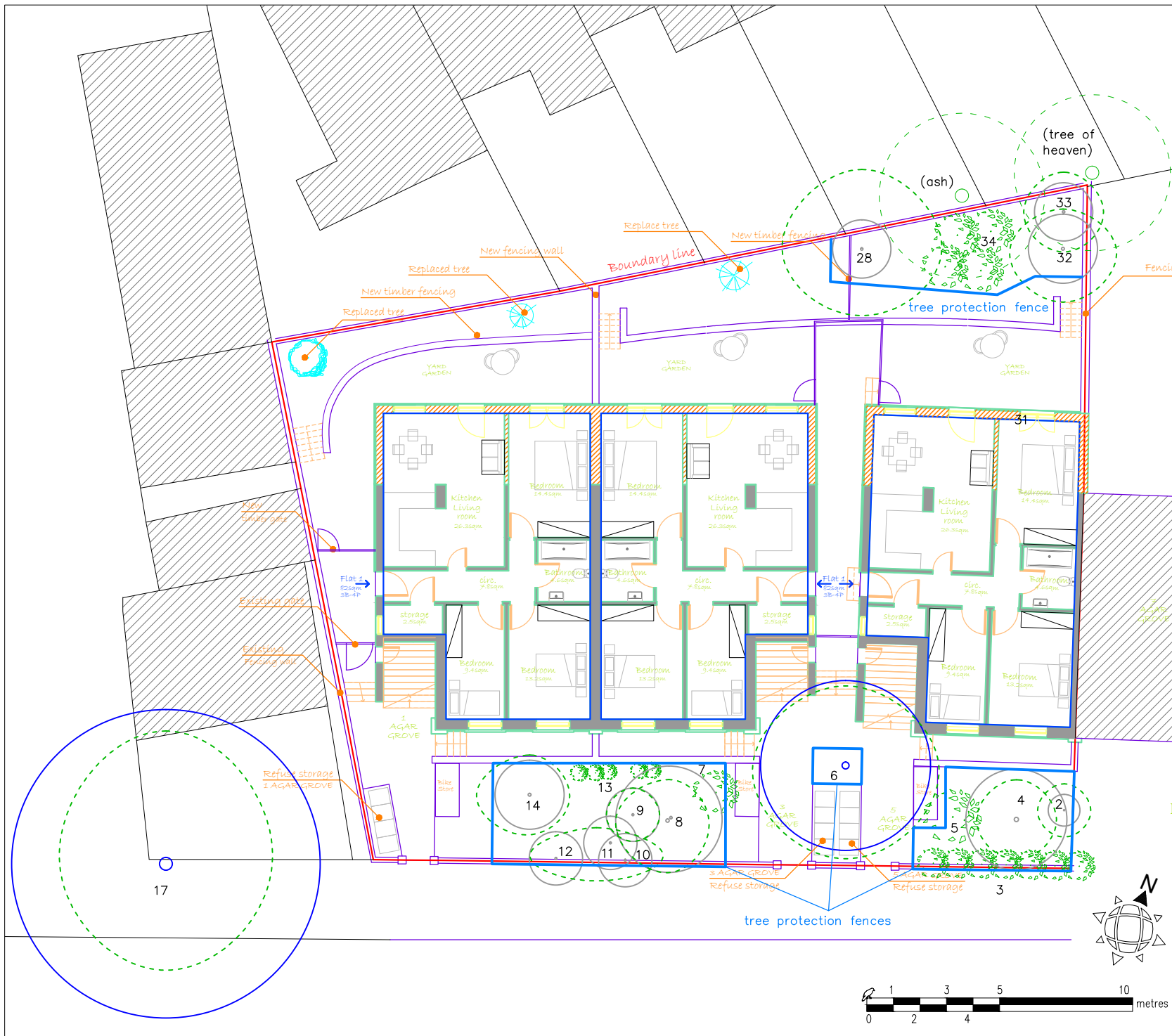
B = blue

C = grey

U = red - dashed - also used to denote dead
trees with no RPA

Tree protection = mid blue

Crown spreads = mid green



Simon Pryce Arboriculture

Client:
BSD Partnership

Site:
1 - 5 Agar Grove, London, NW1 9SL

Title:
Trees and proposed building work -
proposed site and tree protection plan

Date: 21 March 2019

Ref: 18/108/2

Rev:

Scale: 1:200 at A4

CP House,
Otterspool Way,
Watford,
WD25 8HP
tel 01923 467600
info@simonpryce.co.uk
www.simonpryce.co.uk

Original drawing:
Neil Hawes & Associates Ltd

Root protection areas [RPAs] are
colour coded according to retention category
from BS5837:2012, Trees in relation to
demolition, design and construction:

- A = green
- B = blue
- C = grey
- U = red - dashed - also used to denote dead trees with no RPA
- Tree protection = mid blue
- Crown spreads = mid green