

Key Plan  
1:200@A1

90-05-35/310  
Aluminium combined fascia  
and soffit to footbridge roof

Aluminium eaves profile  
158079mm

Window head  
157639mm

90-10-20/306  
'Harmer Building Drainage'  
50mm dia. aluminium downpipe

Window sill  
156393mm

**NOTE: SECONDARY SUPPORT**  
All secondary support fixings for  
SIP panels and cladding to  
specialist manufacturers details

**NOTE: PLATFORM LEVELS**  
Typical levels shown. Refer to  
Engineers drawings for finished  
platform levels / surfacing

**NOTE: COLOURS**  
Drawing colours not representative of final  
finish. Used for graphical reasons only.  
Drawing to be printed in colour in order to  
understand cladding finishes

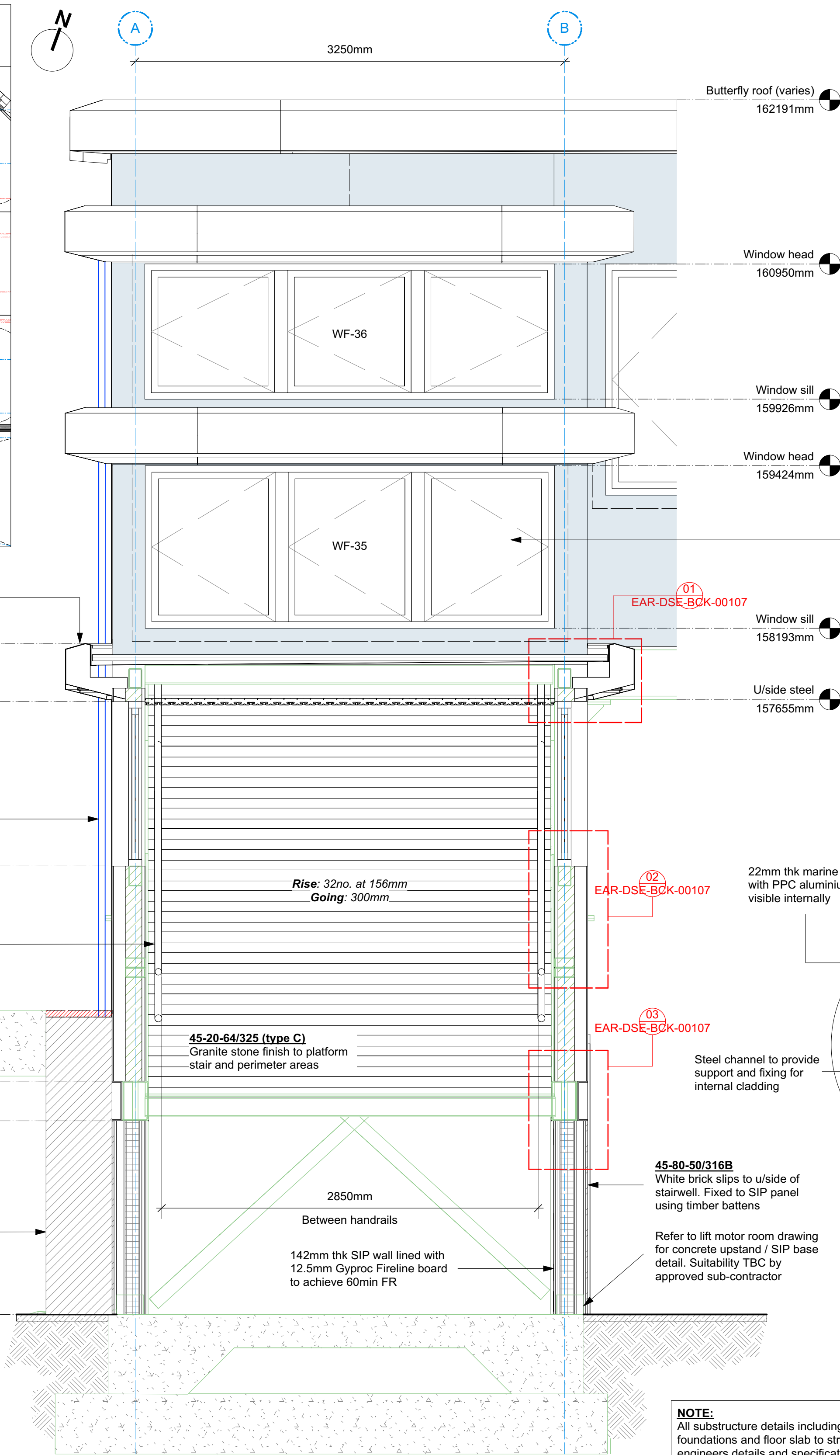
**CLADDING KEY: FOOTBRIDGE**

- 45-80-50/316A  
Red brick slips on SIP wall
- 45-80-50/316B  
White brick slips to SIP wall
- 45-65-52/320  
Perforated aluminium  
sheet cladding
- 45-65-52/320  
Solid aluminium sheet  
cladding on ply backing
- 45-65-52/320  
Solid horizontal aluminium  
sheet cladding

25-80-35/510  
GRC concrete cladding to close gaps.  
Fixed to sheet pile wall. Height up to top  
of pile cap (to be confirmed on site)  
Removable panels for maintenance

Platform level (existing)  
153000mm

Section C:C  
1:25@A1



**NOTE:**  
All substructure details including sub-bases,  
foundations and floor slab to structural / civils  
engineers details and specifications

20-50-30/170  
Single ply membrane finish fully adhered  
to 25mm thk Kingspan 'thermaroof TR27'  
on plyboard substrate.

Supporting steelwork to Structural Fabs  
details.

Window head  
157739mm

Detail 01  
1:5@A1

45-85-40/320  
Linear 84R metal ceiling with  
perimeter shadow gap detail

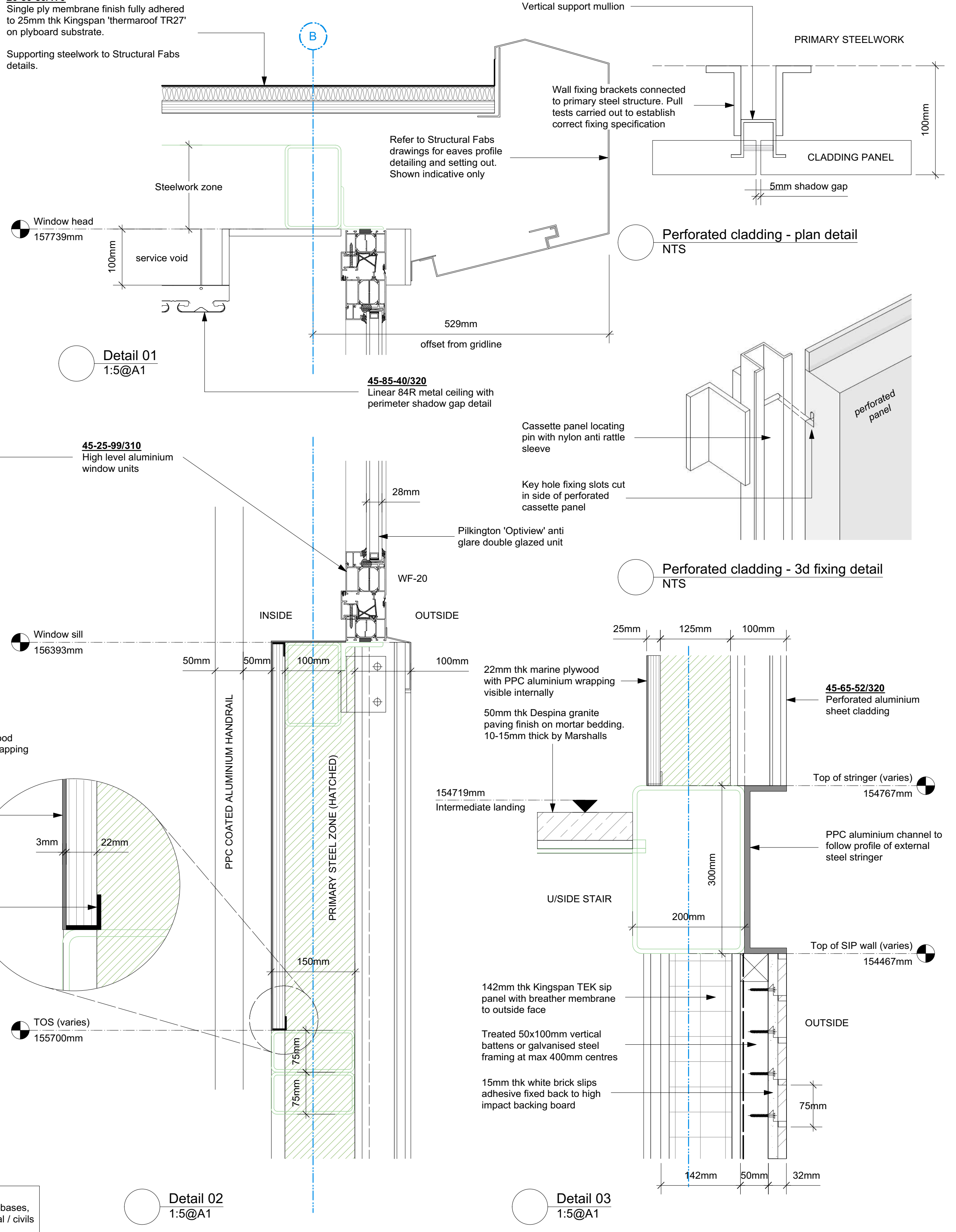
45-25-99/310  
High level aluminium  
window units

Window sill  
156393mm

TOS (varies)  
155700mm

Detail 02  
1:5@A1

Detail 03  
1:5@A1



**NOTES - LEGEND:**

- Dashed line to indicate BPR setting out gridlines
- Dashed line to indicate area shown in greater detail elsewhere
- Green hatch to identify primary steel zone  
(in accordance with the SE design)
- Solid green line to indicate extent of structural  
model. Details in accordance with Mott  
MacDonald drawings.

4.0 FOOTBRIDGE,  
LIFTS & STAIRS  
PACKAGE

APPROVED FOR CONSTRUCTION  
  
Signed \_\_\_\_\_ Date \_\_\_\_\_  
  
Contractor's Engineering Manager

COORDINATES TO LONDON SURVEY GRID.  
PROJECT LEVEL DATUM IS  
100 METRES ABOVE NGVD 1929 DATUM.

© CROWN COPYRIGHT AND DATABASE  
RIGHTS - 2012 ORDNANCE SURVEY - 100035971

DO NOT SCALE  
DISTORTION CAN OCCUR

TL - CAD COMPLIANCE CHECK  
PASS or FAIL

PROJECT  
LONDON OVERGROUND  
LOSTAT West Hampstead Station Redevelopment



| TITLE                           |                         | SUITABILITY          |  |
|---------------------------------|-------------------------|----------------------|--|
| FOOTBRIDGE DETAILED SECTIONS 02 |                         | A                    |  |
| SHEET<br>1 of 1                 | DRAWING SHEET SIZE = A1 | SCALE<br>1:25/1:5@A1 |  |
| LSWH-EN31-EAR-DSE-BCK-00107     |                         | C01                  |  |
| DRAWING NUMBER                  |                         | REVISION             |  |

CON [for construction]  
STATUS