

Key Plan
1:200@A1

NOTE: INTERNAL FINISHES
Please refer to BPR package of works no. 11 for finishes schedule

NOTE: COLOURS
Drawing colours not representative of final finish. Used for graphical reasons only. Drawing to be printed in colour in order to understand cladding finishes

NOTE: WINDOWS
Contractor to allow for anti-scratch film to all footbridge windows. Film coating must not be opaque

NOTE: BRICKWORK
Contractor to allow for anti-graffiti coating to all areas of exposed brickwork liable to vandalism. Coating must be clear and will not affect the look of the brickwork

NOTE: PLATFORM LEVELS
Typical levels shown. Refer to Engineers drawings for finished platform levels / surfacing

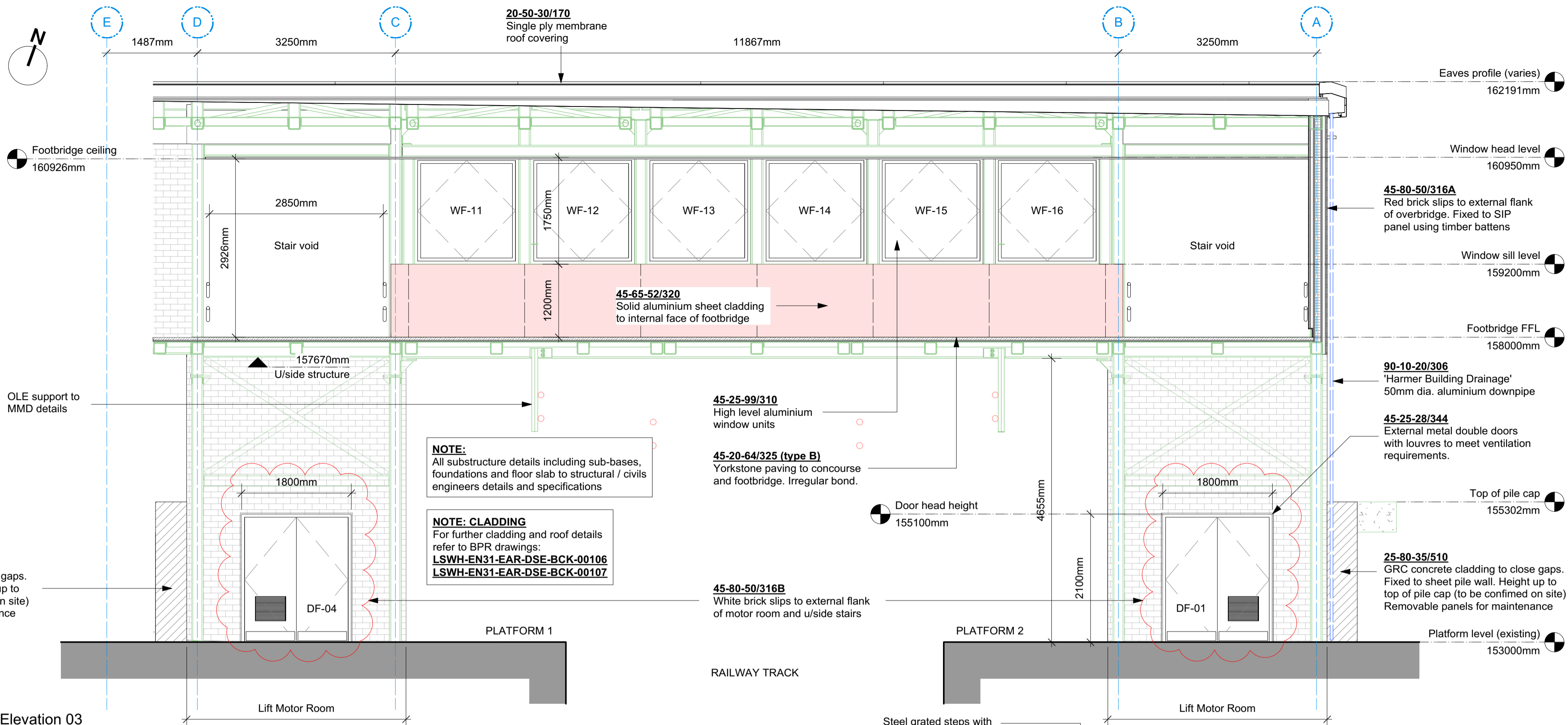
NOTE: SECONDARY SUPPORT
All secondary support fixings for SIP panels and cladding to specialist manufacturers details

Red lines to indicate position of OLE lines in relation to existing bridge structure.

Dashed line to indicate vertical joint line for perforated aluminium cladding

Platform Level (existing)
153000mm

Elevation 04
1:50@A1



NOTE:
All substructure details including sub-bases, foundations and floor slab to structural / civils engineers details and specifications

NOTE: CLADDING
For further cladding and roof details refer to BPR drawings:
LSWH-EN31-EAR-DSE-BCK-00106
LSWH-EN31-EAR-DSE-BCK-00107

NOTES - LEGEND:

- Dashed line to indicate BPR setting out gridlines
- Solid green line to indicate extent of structural model. Details in accordance with Mott MacDonald drawings.
- Dashed line to indicate area shown in greater detail elsewhere

CLADDING KEY: FOOTBRIDGE

- 45-80-50/316A Red brick slips on SIP wall
- 45-80-50/316B White brick slips to SIP wall
- 45-65-52/320 Perforated aluminium sheet cladding
- 45-65-52/320 Solid aluminium sheet cladding on ply backing
- 45-25-28/344 Solid horizontal aluminium sheet cladding

4.0 FOOTBRIDGE, LIFTS & STAIRS PACKAGE

APPROVED FOR CONSTRUCTION

Signed _____ Date _____

Contractor's Engineering Manager

| | | | | | | | |
|---|--|--|--|--------------------------------------|--|--|--|
| COORDINATES TO LONDON SURVEY GRID. PROJECT LEVEL DATUM IS 100 METRES ABOVE NEWLY DATUM. | | © CROWN COPYRIGHT AND DATABASE RIGHTS - 2012 ORDINANCE SURVEY - 100035971 | | DO NOT SCALE DISTORTION CAN OCCUR | | TIL - CAD COMPLIANCE CHECK PASS OR FAIL | |
| CD3 14/7/17 Doors leafs updated to reflect M&E ventilation requirements. | | SB SPC | | NAME DATE | | PROJECT | |
| CD2 31/3/17 Updates to roof lift in accordance with MM comments | | SB SC | | SS 05/04/16 | | LONDON OVERGROUND LOSTAT West Hampstead Station Redevelopment | |
| REV DATE | | BY CHK APP AUTH | | DRAWING SHEET SIZE = A1 | | SCALE 1:50@A1 | |
| | | | | SHEET 1 of 1 | | DRAWING NUMBER LSWH-EN31-EAR-DEL-BCK-00104 | |

London Overground

FOOTBRIDGE DETAILED ELEVATIONS 02

LSWH-EN31-EAR-DEL-BCK-00104

A

C03

CON [for construction] STATUS