

Rolfe Judd

Architecture

Rolfe Judd

Architecture

70 Grays Inn Road

Marketing Pack

25.02.19

www.rolfe-judd.co.uk

London

Old Church Court, Claylands Road,
London, SW8 1NZ
T +44 (0)20 7556 1500

www.rolfe-judd.co.uk

Katowice

40-043 Katowice,
Ul. Podchorążych 1
T +48 32 251 03 74

www.rolfe-judd.pl

Warsaw

00-519 Warszawa,
Ul. Wspólna 35\13
T +48 22 331 49 22

Contents

1.0	Introduction	2
2.0	Location	3
3.0	Floor Plates	4
4.0	CGI Views	11

1.0 Introduction

70 Grays Inn Road is currently undergoing an upgrade of its common parts and a comprehensive refurbishment of the following floor plates to a grade A standard:

- Lower Ground
- Ground
- First
- Second

2.0 Location



3.0 Floor Plates CGI View

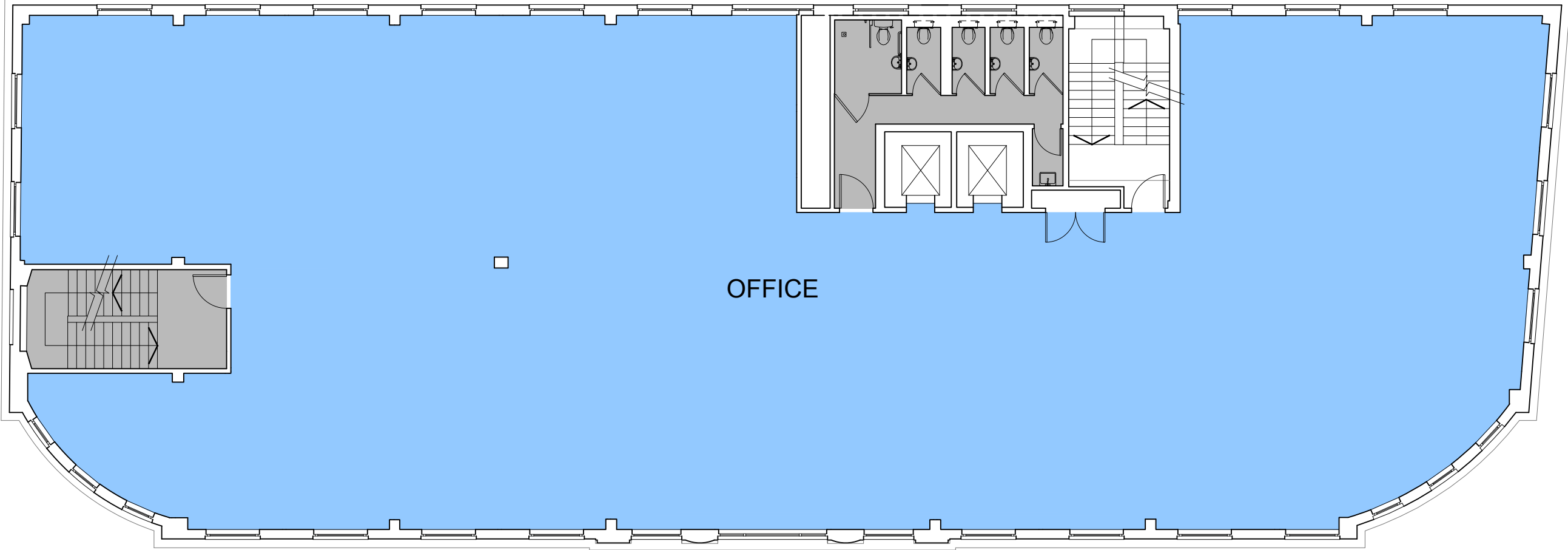


3.0 Floor Plates Specification

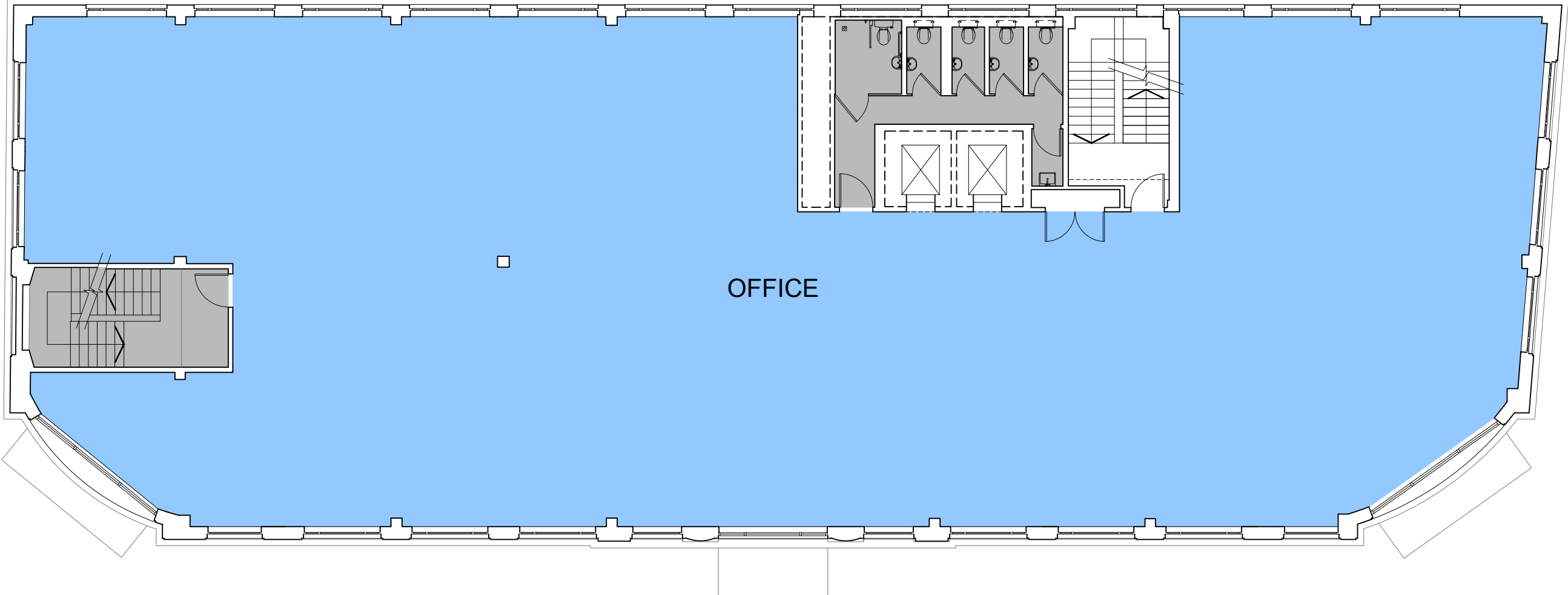
Floor Plate Specification:

- All floors will be offered with a Cat A fit out
- Metal pan raised floor
- Minimum of 2.6m to underside of central raft
- Minimum of 3.1m to underside of main exposed ceiling
- Semi exposed services maximises apparent height but minimises clutter

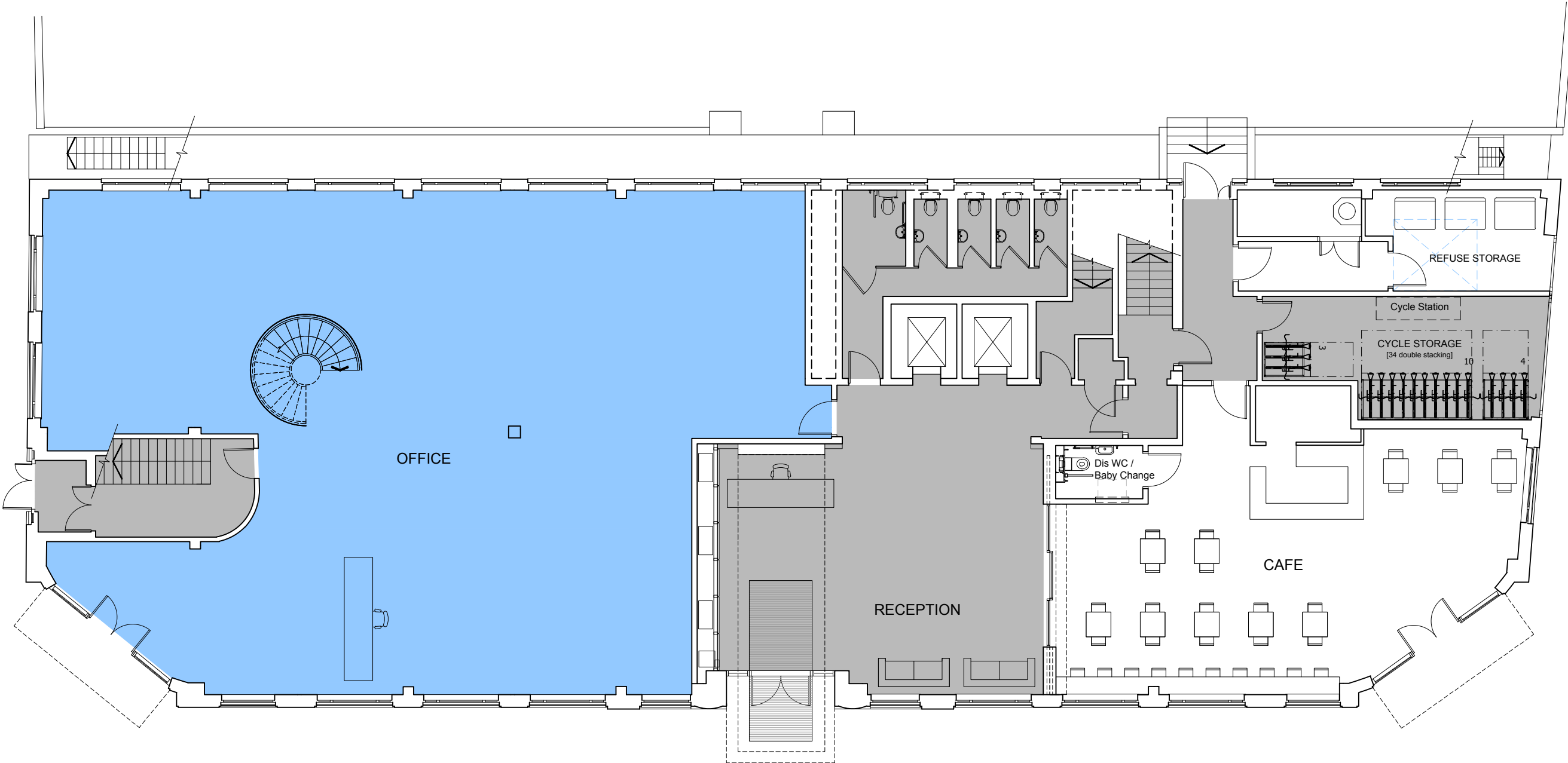
3.0 Floor Plates Second Floor Plan



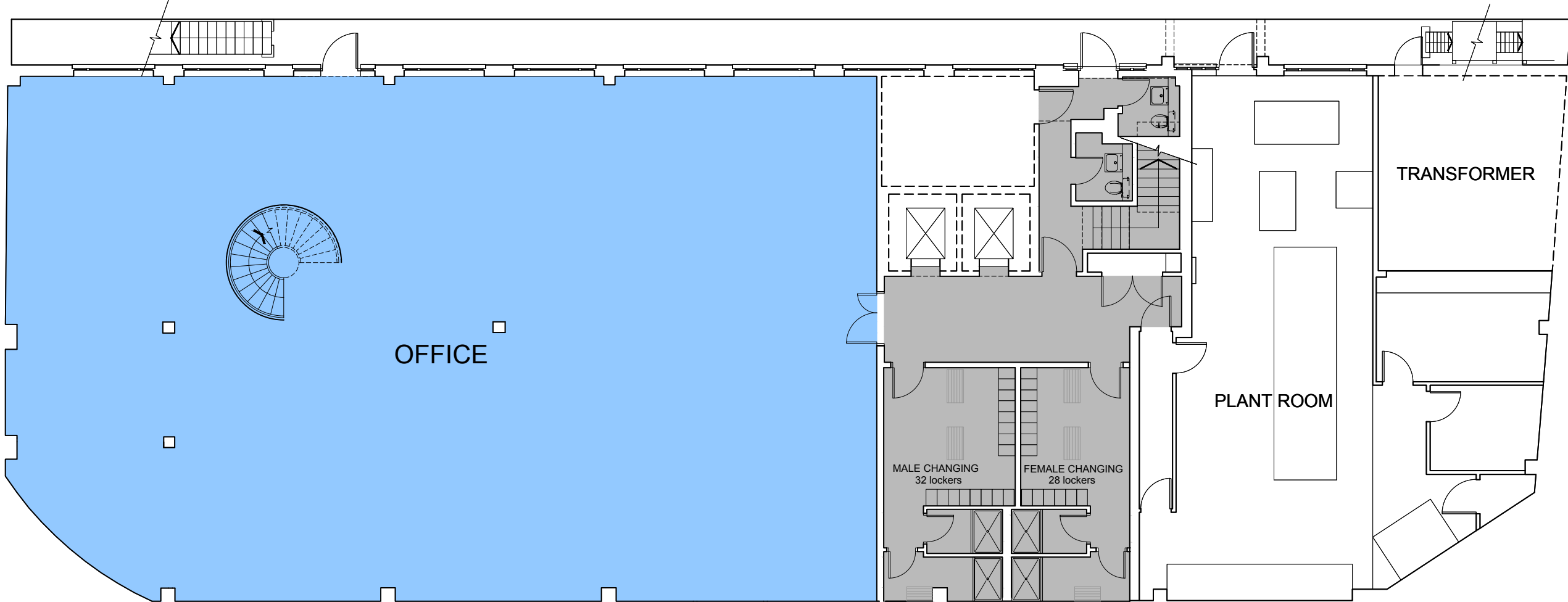
3.0 Floor Plates First Floor Plan



3.0 Floor Plates Ground Floor Plan



3.0 Floor Plates Lower Ground Floor Plan



3.0 Floor Plates Specification

General Specification:

- New Office reception
- New glazing and cladding on primary frontages to ground and first floors
- New lifts
- Upgraded W.C. cores
- Upgraded bicycle storage at ground floor level and new showers and lockers at lower ground floor.
- Upgraded M&E plant

4.0 CGI View Reception



4.0 CGI View External



Rolfe Judd

London

Old Church Court, Claylands Road,
London, SW8 1NZ
T +44 (0)20 7556 1500

www.rolfe-judd.co.uk

Katowice

40-043 Katowice,
Ul. Podchorążych 1
T +48 32 251 03 74

www.rolfe-judd.pl

Warsaw

00-519 Warszawa,
Ul. Wspólna 35\13
T +48 22 331 49 22