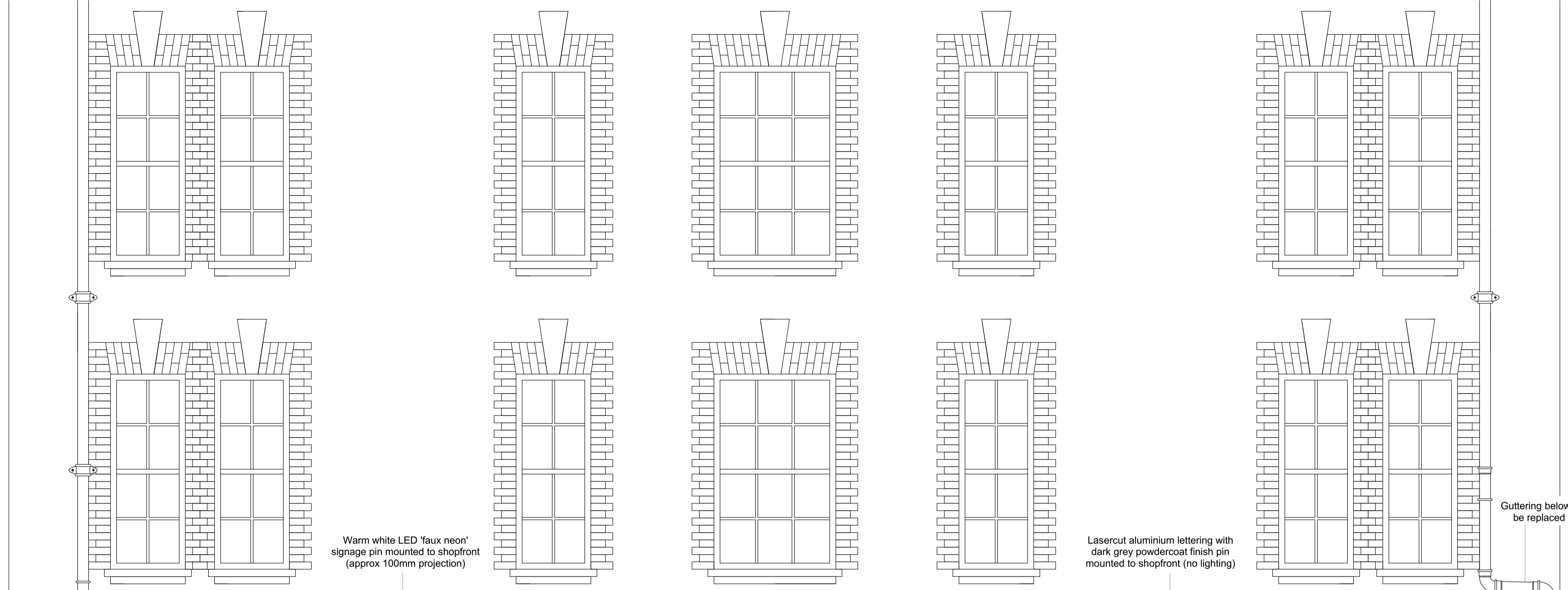


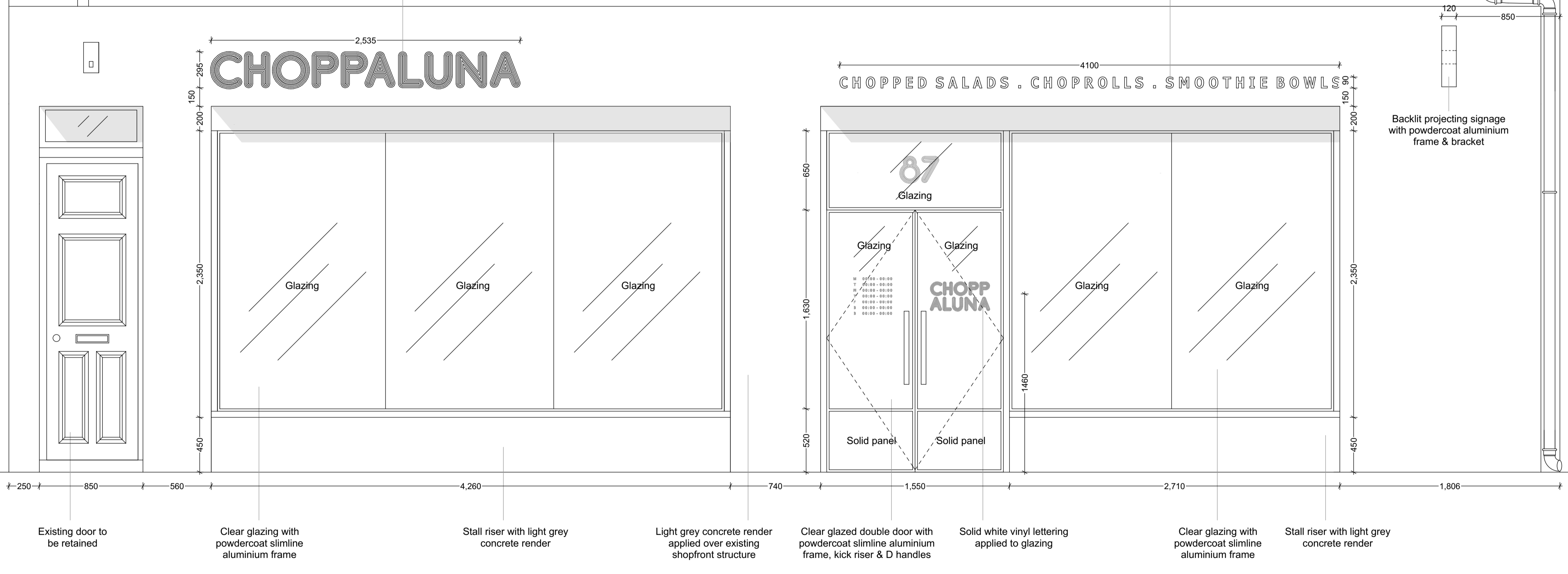
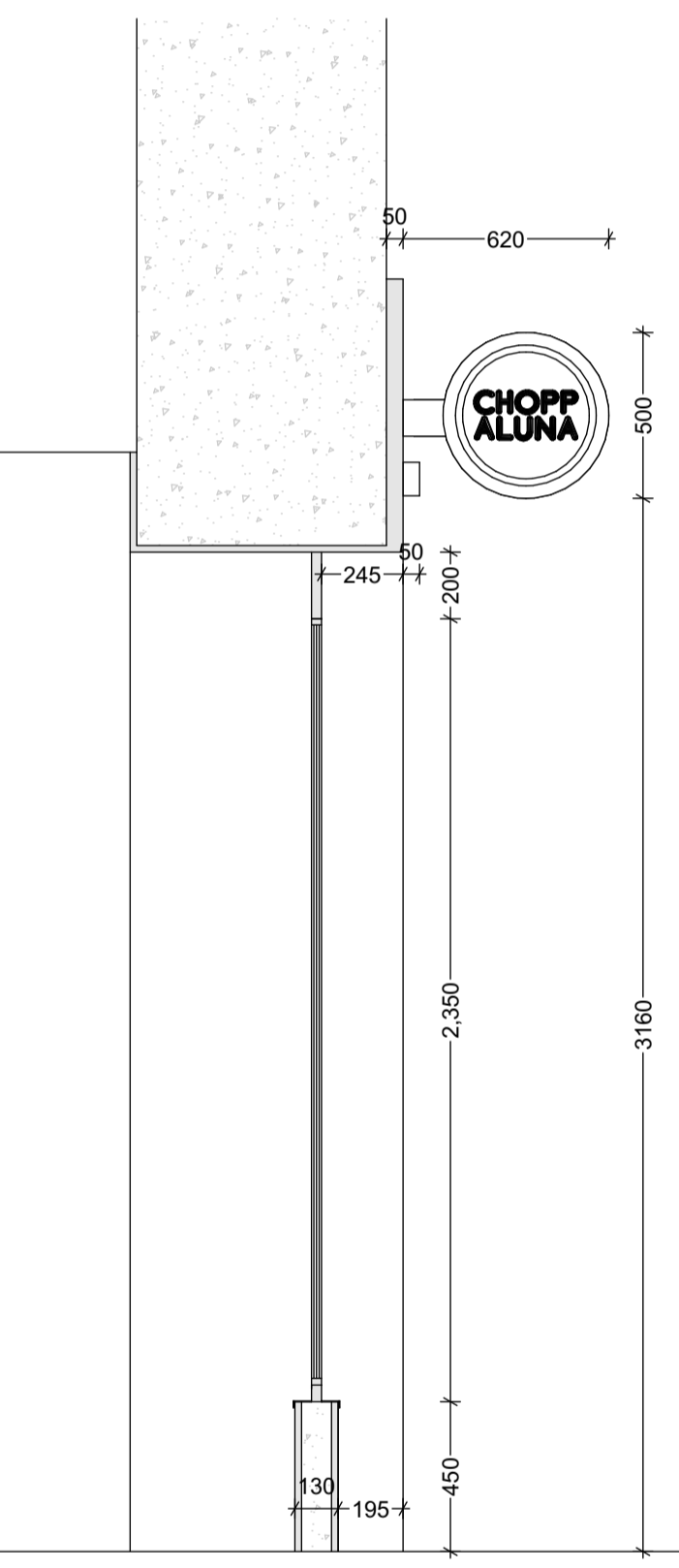
**PLEASE NOTE:**  
 ALL DIMENSIONS, DRAWINGS, DETAILS AND SPECIFICATIONS MUST BE VERIFIED BY CONTRACTORS PRIOR TO COMMENCEMENT OF WORKS. PLEASE REPORT ANY ISSUES TO NINE YARD CLUB PRIOR TO COMMENCEMENT OF WORKS.  
 ALL DRAWINGS AND DETAILS MUST BE APPROVED BY NINE YARD CLUB PRIOR TO COMMENCEMENT OF WORKS.  
 ALL MATERIALS MUST CONFORM TO CURRENT BUILDING STANDARDS AND HEALTH AND SAFETY REQUIREMENTS.  
 ALL SPECIFIED ITEMS OR EQUIPMENT MUST BE INSTALLED ACCORDING TO THE MANUFACTURER'S GUIDELINES.  
 ALL FINISHES MUST BE APPROVED BY NINE YARD CLUB PRIOR TO COMMENCEMENT OF WORKS.  
 FOR SETTING OUT PURPOSES, DIMENSIONS SHOULD BE TAKEN FROM THE ISSUES SETTING OUT DRAWINGS.  
 CONTRACTORS MUST APPROVE CONSTRUCTION DETAILS PRIOR TO COMMENCEMENT OF WORKS AND SHOULD ADVISE SUITABLE ALTERNATIVES WHERE NECESSARY.  
 THIS DRAWING MUST BE READ IN CONJUNCTION WITH ALL ASSOCIATED DRAWINGS. PLEASE NOTIFY NINE YARD CLUB SHOULD ANY DISCREPANCIES BE IDENTIFIED.  
 DESIGN AND COPYRIGHT OF NINE YARD CLUB LTD.

REV:	DATE:	DESCRIPTION:
A	23.07.19	Access hatch updated
B	16.09.19	Tagline signage wording updated
C	10.10.19	Stall riser added, glazing reduced, digital signage removed & door to residential unit retained
D	22.01.20	Entrance doors amended & window vinyl removed
E	23.01.20	Entrance doors amended & notes updated

**1 SHOPFRONT ELEVATION**  
SCALE 1:20 @ A1

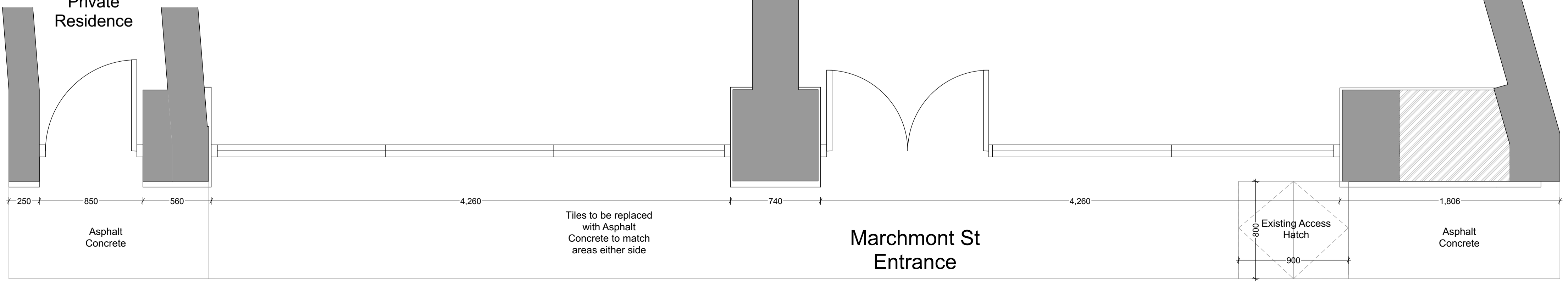


**2 SECTION S1**  
SCALE 1:20 @ A1



Store Interior ←  
 Marchmont Street →

**3 SHOPFRONT PLAN VIEW**  
SCALE 1:20 @ A1



PROJECT REF:  
1806 CHOPP ALUNA MARCHMONT STREET

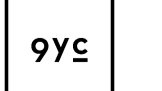
DRAWING REF:  
1801-C01-017 PROPOSED SHOPFRONT DETAILS

REVISION:  
E

SCALE:  
1:20 @ A1

DRAWN BY:  
LK

ISSUE DATE:  
18.07.19



+44 (0)20 8064 0482  
 +44 (0)1904 530058  
 hello@nineyardclub.com