

'Wildflower plug plants' include:

- Harebells
- Cowslips
- Field scabious
- Self heal
- Dianthus carthusianorum
- Autumn crocus

Planting Plan along Western Edge of Channing Fairseat Grounds

Design notes:

There are 3 principle areas in this section of the new school grounds. Areas 1 and 2 are divided by a winding path that will provide non-wheel chair access to the tennis court area and will add interest to the planting. The planting in areas 1 and 2 will be quite different in character, but there will be some plants that will 'bleed across' between both to link them together.

1. An area along the western boundary of the school that runs beside Waterlow Park. The park here has large deciduous trees and some shrubs and ivy. There is a wooden fence. The space contains areas of shade to the southern end and partial sun further north.

The planting in this area will blend with the park backdrop. It will contain 3 specimen trees and a mixture of large/medium flowering shrubs to screen the fence. These shrubs will be deciduous and evergreen and will provide flower, leaf and berry interest throughout the year. In front of the shrubs will be smaller shrubs and perennials that will provide an attractive ground cover of interest throughout the year. Plants will include ferns and flowering perennials for a long season of interest.

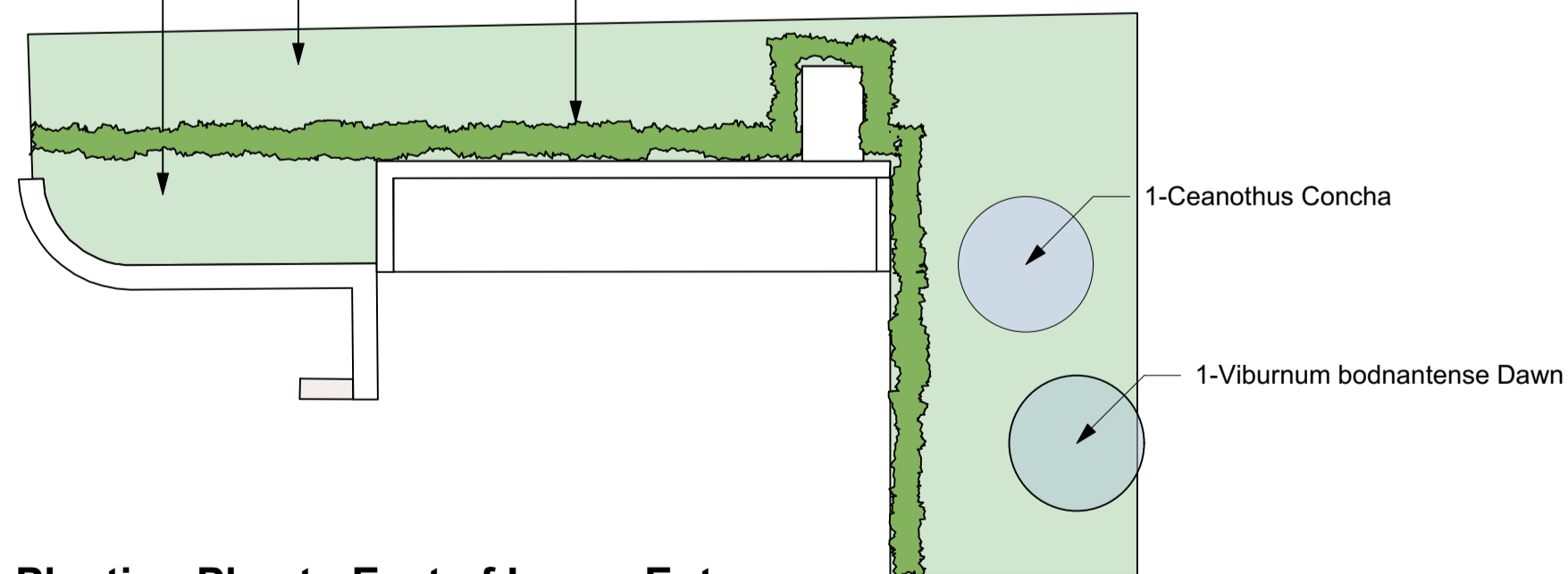
2. The second area is to the east of the first area and on the other side of the winding path. This area is in full sun most of the day and the planting here will need to be able to cope with these tough conditions. It is therefore proposed that the planting be a 'gravel garden' planting which will contain suitable planting. This area will be mulched with gravel which will provide a fine foil to display the plants which will have space around them so they can be best viewed. The gravel of the mulch will blend with that of the path, again helping to join the areas together. The path will be slightly sunken relative to the planting beds and edged with 'Everedge' to define it and encourage people not to stray into the planting. The planting will include 3 speciem multi-stem Judus Trees and a variety of drought tolerant structural shrubs and perennials, that will again provide interest and flowers throughout the year. Plants have been selected not just for their tolerance, but also for their appearance against a gravel mulch. This style of planting and the gravel mulch will also look very in keeping with the all-glass lift housing that will be in the middle of the planting area.

3. The final areas are the sloped areas to the south of the main planting and to the east of the lower entance. These area are very steep and so need to be very minimal maintenance. To achieve this they will be laid to a small, slow growing grass that requires only 1-2 cuts a year. A low number of small wildflowers or similar can be scattered through the grass as plug plants to give some additional flowering interest and diversity.

Steeply sloping areas laid to Lindum LT2 – Low Maintenance Fine Turf, potentially with a low density of wildflower plug plants

Flat top area laid to Lindum LT2 - Low maintenance fine turf

Prunus lusitanicus 'safety' hedge to 1.0m

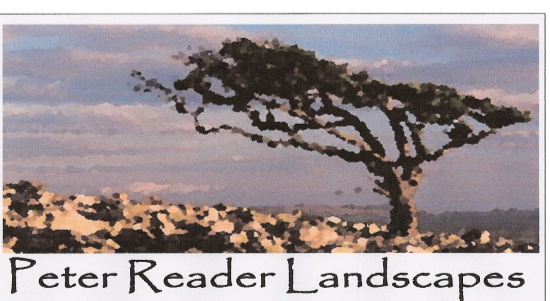


Planting Plan to East of Lower Entrance

Scale
0.0 1.0 2.0 3.0 4.0 5.0m



Notes:
Do not scale from this drawing. Check all measurements on site.
Report all errors and omissions to the designer immediately.



24 Bisham Gardens, Highgate
London, N6 6DD
0208 348 4730 / 07941 829 162

Channing Fairseat
Planting Plans: South Beds

Drawing 5.0 Version 4.0

Scale 1:100 @ A1 11th July 2019