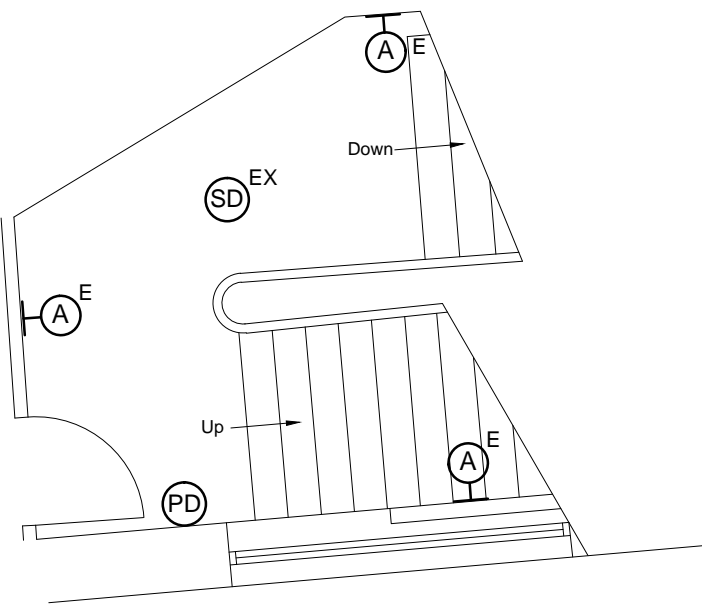
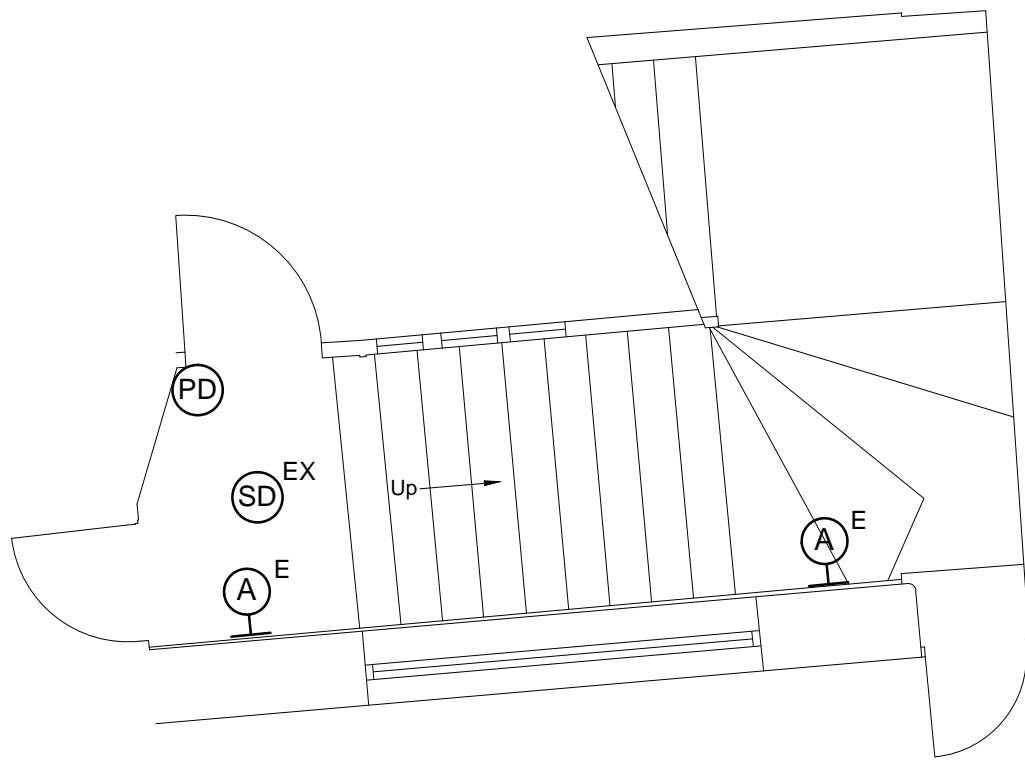


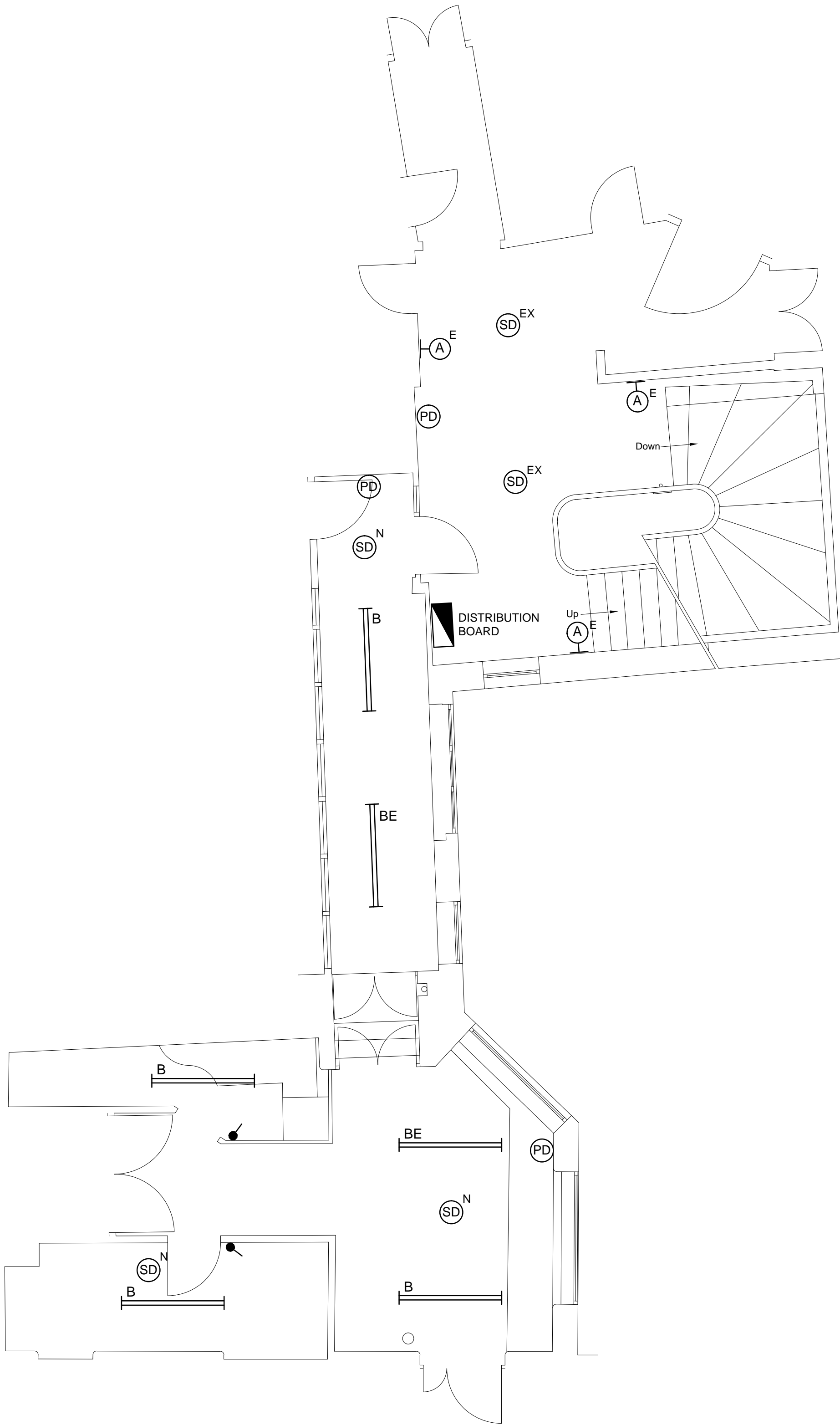
Third Floor Plan (Scale 1:50)



First Floor Plan (Scale 1:50)



Ground Floor Plan (Scale 1:50)



Second Floor Plan (Scale 1:50)

Mondia G2 WD2 LED1600-840 ET  
TOC: 6777640



Offer text

Round surface-mounted LED luminaire with opal PMMA diffuser. For wall or ceiling mounting. Round, opal diffuser, spherical construction. Luminaire luminous flux 1800 lm, connected load 14,00 W. Luminous efficiency of luminaire 114 lm/W. Light colour neutral white, correlated colour temperature (CCT) 4000 K, general colour rendering index (CRI) Ra > 80. Mean rated service life L<sub>80</sub> (L<sub>70</sub> 25 °C) = 50,000 h, mean rated service life L<sub>90</sub> (L<sub>70</sub> 25 °C) = 50,000 h. Luminaire body sheet steel. Surface is scratch-free powder-coated white (RAL 9010). Diameter of diffuser Ø 402 mm, luminaire height 110 mm. Permissible ambient temperature (Ta): -20 °C - +25 °C. Safety class (EN 61140): I. Protection rating (DIN EN 60529): IP40. Impact resistance level in accordance with IEC 62262: IK03, testing temperature of anti-glow test in accordance with IEC 60065-2-11: 650 °C. With electronic transformer, available. The luminaire complies with fundamental requirements of applicable EU regulations and product safety legislation and bears the CE symbol. The luminaire is also ENEC-certified by an independent testing authority.

Product features and key data

<b>Applications</b>	entrance areas corridors stairways recreation rooms hotels and restaurants residential areas
<b>Luminaire type</b>	Round surface-mounted LED luminaire with opal PMMA diffuser.
<b>Mounting method</b>	Surface-mounting
<b>Luminaire optic</b>	Round, opal diffuser, spherical construction
<b>Connected load</b>	14 W
<b>Colour temperature</b>	4,000 K
<b>Rated luminous flux</b>	1,800 lm
<b>Luminous efficacy</b>	114 lm/W
<b>CEN flux code</b>	42 71 90 91 100 14 29 50 9
<b>Service life</b>	L70 (25 °C) = 50,000 h L80 (25 °C) = 35,000 h
<b>Colour rendering index</b>	80
<b>Colour tolerance</b>	3 SDCM
<b>Photobiological class</b>	Group 0 - no risk
<b>Luminaire colour</b>	RAL 9016 traffic white
<b>Luminaire body</b>	Luminaire body sheet steel
<b>Electrical version</b>	With electronic transformer, switchable.
<b>Connection method</b>	Terminal
<b>Mains frequency</b>	50/60 Hz
<b>Mains voltage</b>	230 - 240 V
<b>Ingress Protection (IP)</b>	IP40
<b>Protection rating on room side</b>	IP40
<b>Protection class</b>	I
<b>Impact resistance (IK)</b>	IK03
<b>Hot wire resistance</b>	650 °C
<b>Ambient temperature</b>	-20 - 25 °C
<b>Net height</b>	110 mm
<b>Outside diameter</b>	402 mm
<b>Weight</b>	1,3 kg

Luminaire Type A - Specification (not to scale))

XTREME

IP40 LED recessed-mount emergency luminaire



Features:

Suitable for internal or external use of industrial areas  
Moisture-proof and dust-resistant IP65 fixture  
Supplied with TAMTEC LED modules  
Impact resistant construction  
Gear options including DALI and emergency available  
CRI: Ra>80  
Up to 130 lumens per Watt efficacy  
50,000 hours lifetime (L70/B50)

Construction:

Grey polycarbonate body  
Supplied with opal diffuser  
Integral driver  
Stainless steel fixing clips  
Supplied as standard with neutral white (4000K) LED

Options:

V205 - Batten-fit PIR  
V206 - Batten-fit PIR and photocell  
V208 - Batten-fit with daylight dimming  
HFS - Microwave movement sensor  
HFS-D - Dimmable microwave movement sensor  
D - Dimmable DALI  
M3 - 3 hours integrated emergency  
A3 - Emergency self test

Luminaire Type B - Specification (not to scale))

SCHEDULE OF SYMBOLS

SYMBOL	DESCRIPTION
(A)	TRILUX 7402N 1500 24W LUMINAIRE MAINTAINED EMERGENCY FITTING (REFER TO LUMINAIRE TYPE A TECHNICAL SPECIFICATION ABOVE)
B	TAMLITE XTREME EWPL 2574NW LUMINAIRE (REFER TO LUMINAIRE TYPE B TECHNICAL SPECIFICATION ABOVE)
E	DENOTES LUMINAIRE COMPLETE WITH EMERGENCY LIGHTING FACILITIES
(PD)	DANLERS CESR PIR PRESENCE DETECTOR
●	ONE WAY LIGHTING SWITCH
(SD) EX	EXISTING FIRE ALARM SMOKE DETECTOR
(SD) N	NEW FIRE ALARM SMOKE DETECTOR
(SS)	NEW FIRE ALARM SMOKE DETECTOR COMPLETE WITH SOUNDER BASE
■	EXISTING DISTRIBUTION BOARD

This drawing is copyright and may not be reproduced or made use of unless expressly agreed by J. FARLEY CONTRACTS LIMITED

C

DO NOT SCALE - ALL DIMENSIONS TO BE CONFIRMED

NOTES

1. DO NOT SCALE THIS DRAWINGS - ALWAYS WORK FROM SITE TAKEN DIMMENSIONS

- 20.01.20 ISSUED FOR COMMENTS/APPROVAL

REV DATE AMENDMENT

CLIENT  
NEILCOTT CONSTRUCTION LTD

PROJECT  
HEAL & SON LIMITED  
THE HEAL'S BUILDING  
196 TOTTENHAM COURT ROAD  
LONDON W1T 7LQ

DRAWING TITLE  
REAR STAIRCASE  
PROPOSED MODIFICATIONS  
TO ELECTRICAL SERVICES  
LAYOUT

JFC  
J Farley Contracts Ltd  
Unit 6, The Metro Business Centre  
Kangley Bridge Road, London SE26 5BW  
Tel: 0208 650 7022 Email: jfcontracts@btconnect.com

SCALE 1-50@A1 DATE JANUARY 2020 DRN. EDS CHKD. JF

DRAWING No. JFC/202001/E01 REV. -