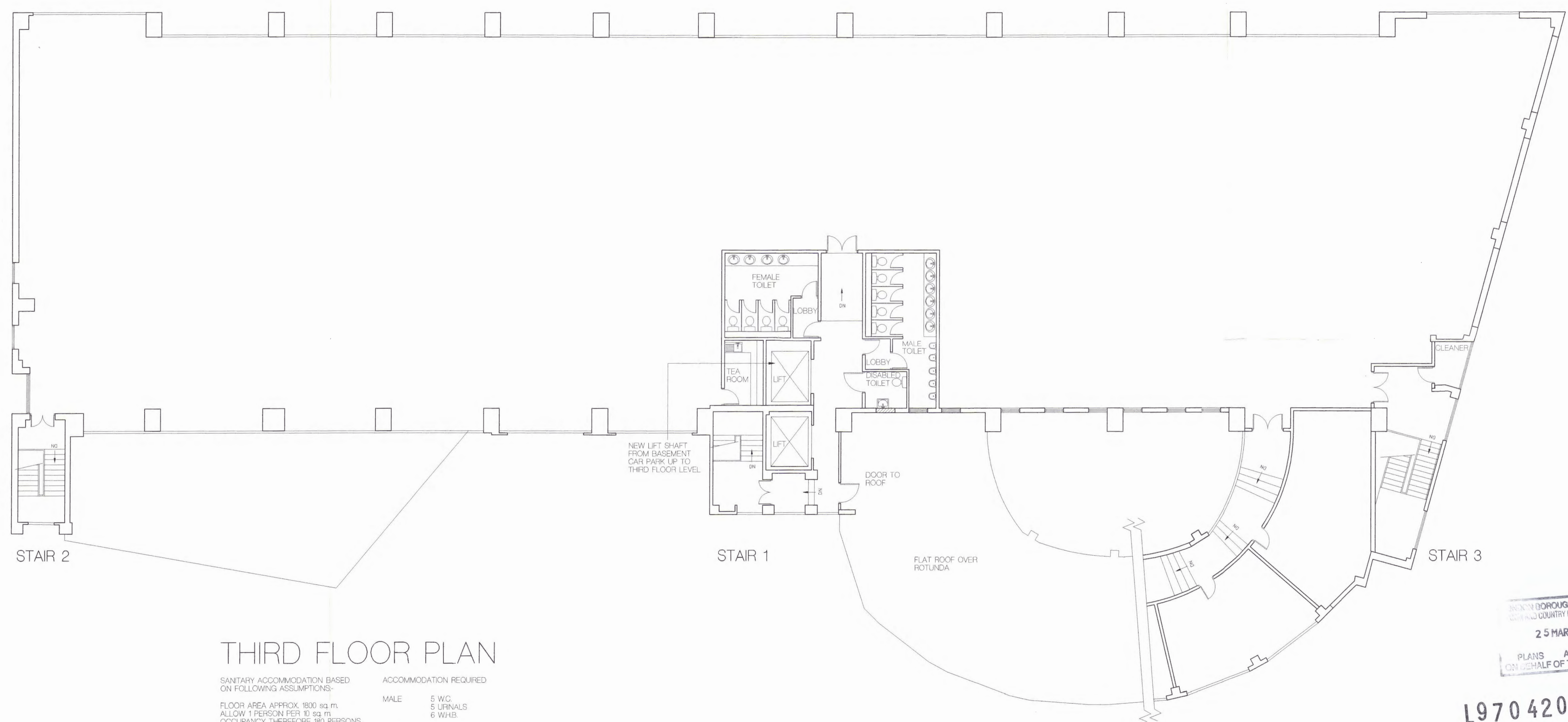


revision	date	initials	description of amendments



THIRD FLOOR PLAN

SANITARY ACCOMMODATION BASED ON FOLLOWING ASSUMPTIONS:-
 FLOOR AREA APPROX. 1800 sq. m.
 ALLOW 1 PERSON PER 10 sq. m.
 OCCUPANCY THEREFORE 180 PERSONS
 ASSUME 60% MALE, 40% FEMALE
 OCCUPANCY THEREFORE
 108 MALE, 72 FEMALE.

ACCOMMODATION REQUIRED

MALE	5 W.C. 5 URINALS 6 W.H.B.
FEMALE	4 W.C. 4 W.H.B.
DISABLED	1 W.C. 1 W.H.B.

INDON BOROUGH OF CAMDEN
 GENERAL COUNTRY PLANNING ACTS
 25 MAR 1998
 PLANS APPROVED
 ON BEHALF OF THE COUNCIL

L970 420 2R2
 P970 420 1R2

P K Y S A N D S	project	7-11 HERBRAND STREET LONDON WC1													
	title	PROPOSED THIRD FLOOR PLAN (OFFICE SCHEME)													
	scale	1:100	date	6/2/97	drawn	JEFF	job no.	534	disc.	A	dwg no.	WP 105	rev.		issue date
7 Cliff Road Studios, London, NW1 5AN		facsimile: 0171 485 5753		modern: 0171 428 0560		email: 1061531026@compuserve.com		telephone: 0171 485 1114							