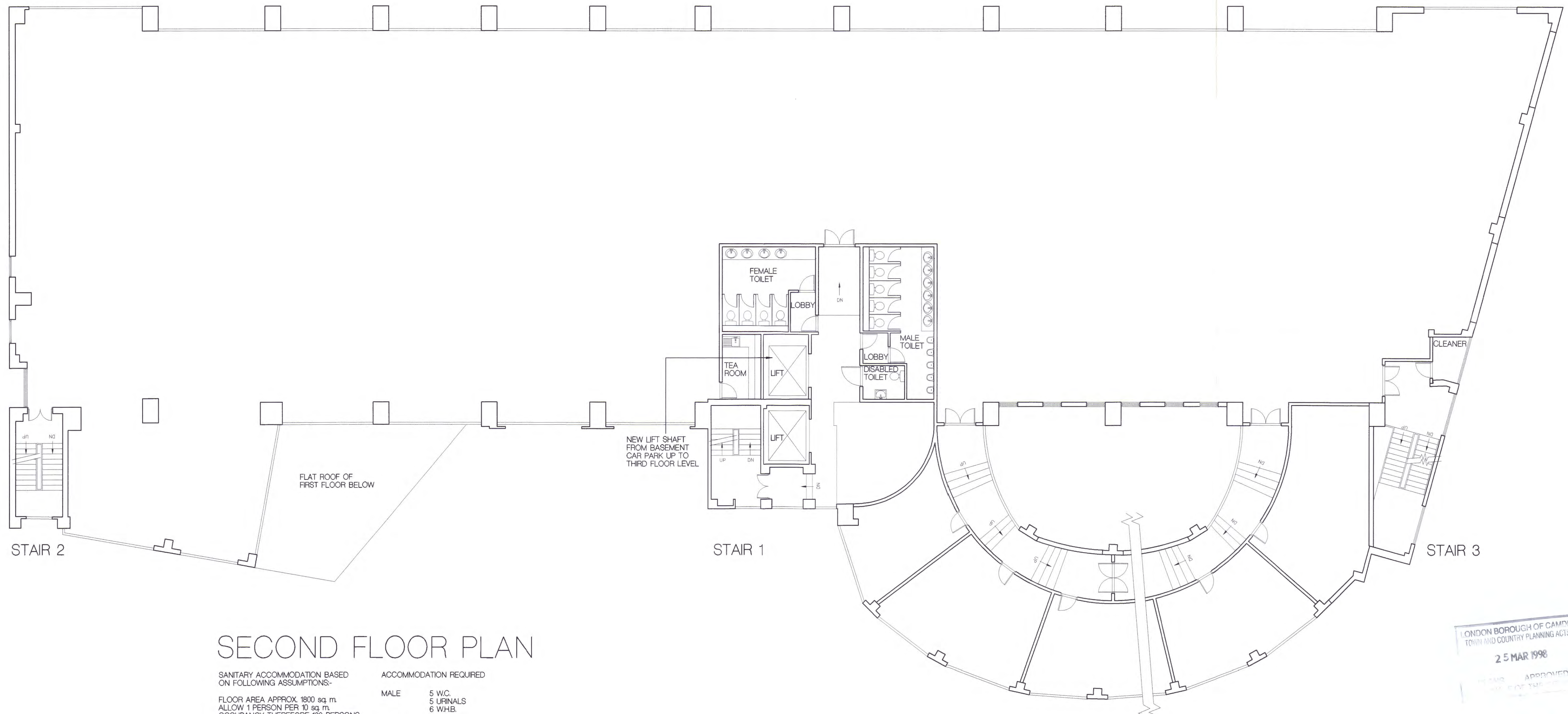


revision	date	initials	description of amendments
A	05.08.97.	JEFF	EXTENT OF SECOND FLOOR AREA REDUCED. FIRST FLOOR FLAT ROOF INDICATED.



SECOND FLOOR PLAN

SANITARY ACCOMMODATION BASED ON FOLLOWING ASSUMPTIONS:-
 FLOOR AREA APPROX. 1800 sq. m.
 ALLOW 1 PERSON PER 10 sq. m.
 OCCUPANCY THEREFORE 180 PERSONS
 ASSUME 60% MALE, 40% FEMALE
 OCCUPANCY THEREFORE
 108 MALE, 72 FEMALE.

ACCOMMODATION REQUIRED

MALE	5 W.C. 5 URINALS 6 W.H.B.
FEMALE	4 W.C. 4 W.H.B.
DISABLED	1 W.C. 1 W.H.B.

LONDON BOROUGH OF CAMDEN
 TOWN AND COUNTRY PLANNING ACTS
 25 MAR 1998
 APPROVED

P9704201R2
 L9704202R2

P A S K I N K Y R I A K I D E S S A N D S	project	7-11 HERBRAND STREET LONDON WC1												
	title	PROPOSED SECOND FLOOR PLAN (OFFICE SCHEME)												
	scale	1:100	date	6/2/97	drawn	JEFF	job no.	534	disc.	A	wp no.	WP 104	rev.	A
7 Cliff Road Studios, London, NW1 9AN telephone: 0171 485 1114 facsimile: 0171 485 5753 modem: 0171 428 0560 email: 1061531026@compuserve.com														