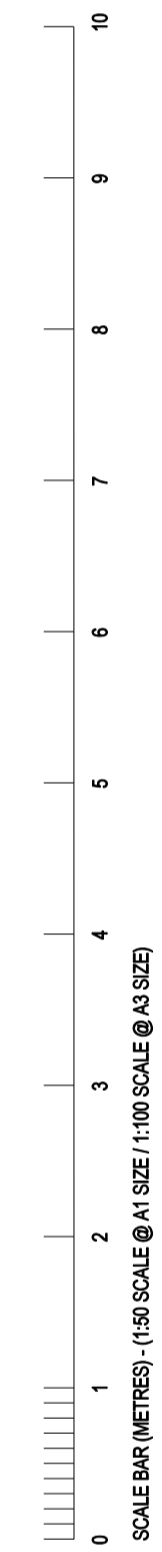
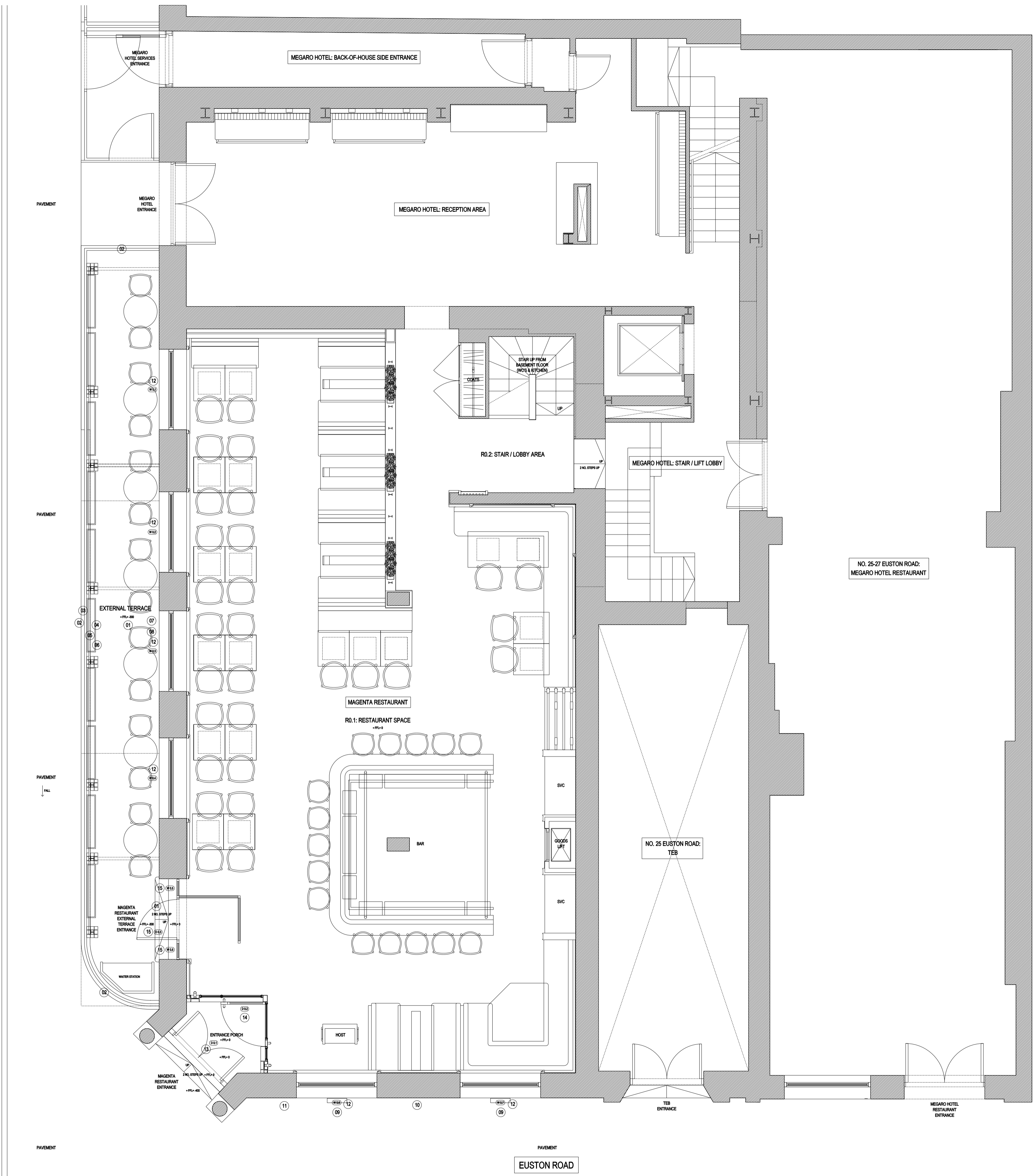
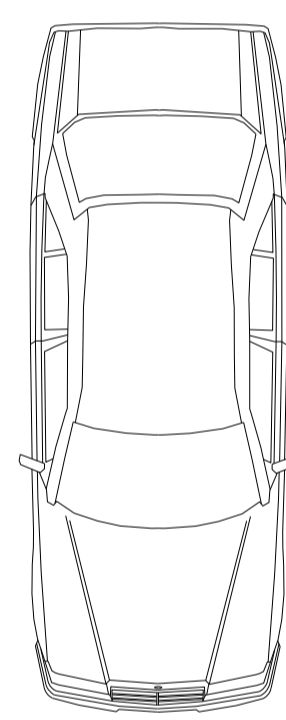


- KEY TO MATERIALS / DESCRIPTION OF PROPOSALS:
- 01 REMOVE EXISTING RAMP, LEVEL GROUND AND INSTALL GREY LIMESTONE PAVING WITH 2 NO. LIMESTONE STEPS TO MATCH UP FROM EXTERNAL TERRACE TO RESTAURANT
 - 02 RETAIN EXISTING BLACK PAINTED METAL RAILINGS AND REPLACE GATE WITH FIXED RAILINGS AND RETAIN EXISTING CONCRETE KERB
 - 03 HARDWOOD TIMBER TRELLIS FIXED TO BLACK PAINTED METAL SUPPORT COLUMNS, WHICH ARE FIXED TO THE GROUND WITH SUPPORT METAL PLATES AND RESTRAINED BACK TO THE BUILDING ELEVATION WITH HORIZONTAL METAL SUPPORTS TO MATCH
 - 04 HANGED BLACK PAINTED METAL AND HARDWOOD TIMBER PLANTER BOX FIXED TO INSIDE FACE OF METAL RAILINGS
 - 05 BLACK PAINTED METAL AND HARDWOOD TIMBER PLANTER BOXES WITH BLACK PAINTED METAL DRAINAGE PIPES DISCHARGING TO GROUND LEVEL
 - 06 SURFACE MOUNTED HEATER LAMPS FIXED TO REAR FACE OF PLANTER BOXES
 - 07 MOTORISED RETRACTABLE AWNING WITH BOX FIXED TO ELEVATION OF BUILDING, AWNING GREY / PINK COLOURED WITH SIGNAGE ON AWNING FLAP
 - 08 SURFACE MOUNTED EXTERNAL LIGHTING TO ELEVATION OF BUILDING
 - 09 SURFACE MOUNTED INTERNALLY ILLUMINATED MENU DISPLAY BOARDS
 - 10 SURFACE MOUNTED 'MAGENTA' SIGNAGE LETTERS
 - 11 SURFACE MOUNTED 'MAGENTA' PROTRUDING SIGN
 - 12 REPLACEMENT BLACK PAINTED METAL FRAMED CLEAR DOUBLE GLAZED REPLACEMENT FIXED ARCH / RECTANGULAR WINDOWS TO EXISTING RETAINED WINDOW STRUCTURAL OPENINGS
 - 13 RETAIN EXISTING HARDWOOD TIMBER ENTRANCE DOORS AND FRAME, REMOVE EXISTING OPAQUE GLAZED FANLIGHT ABOVE TO BE REPLACED WITH CLEAR GLASS AND SIGNAGE PATTERNED FILM
 - 14 BLACK PAINTED METAL FRAMED CLEAR DOUBLE GLAZED HINGED INTERNAL ENTRANCE DOOR, FIXED SCREEN AND FIXED GLAZING ABOVE DOOR
 - 15 BLACK PAINTED METAL FRAMED CLEAR DOUBLE GLAZED HINGED EXTERNAL DOOR TO ACCESS EXTERNAL TERRACE, FIXED VERTICAL GLAZING TO EITHER SIDE AND FIXED ARCHED GLAZING ABOVE

ROAD
BELGROVE STREET



rev	date	reason	by
11.19		ISSUE FOR PLANNING	SJAS



Unit 6, Masons Yard
177 Westbourne Street t: +44 (0) 1273 201 830
Hove e: steve@searyarchitects.co.uk
East Sussex BN3 5FB w: www.searyarchitects.co.uk

project:	Magenta Restaurant, Belgrove Street, Kings Cross, London, WC1H 8AB
client:	St Pancras Hotels Group
dwg title:	Proposed Ground Floor Plan 01
dwg no:	15-11-01
scale:	1:50 (@A1 SIZE)
project no:	2819
rev:	
date:	11.19
status:	PLANNING

01 PROPOSED GROUND FLOOR: GENERAL ARRANGEMENT PLAN 01
Scale 1:50 (@ A1 SIZE)