



Indicates A Residual Risk As A Warning

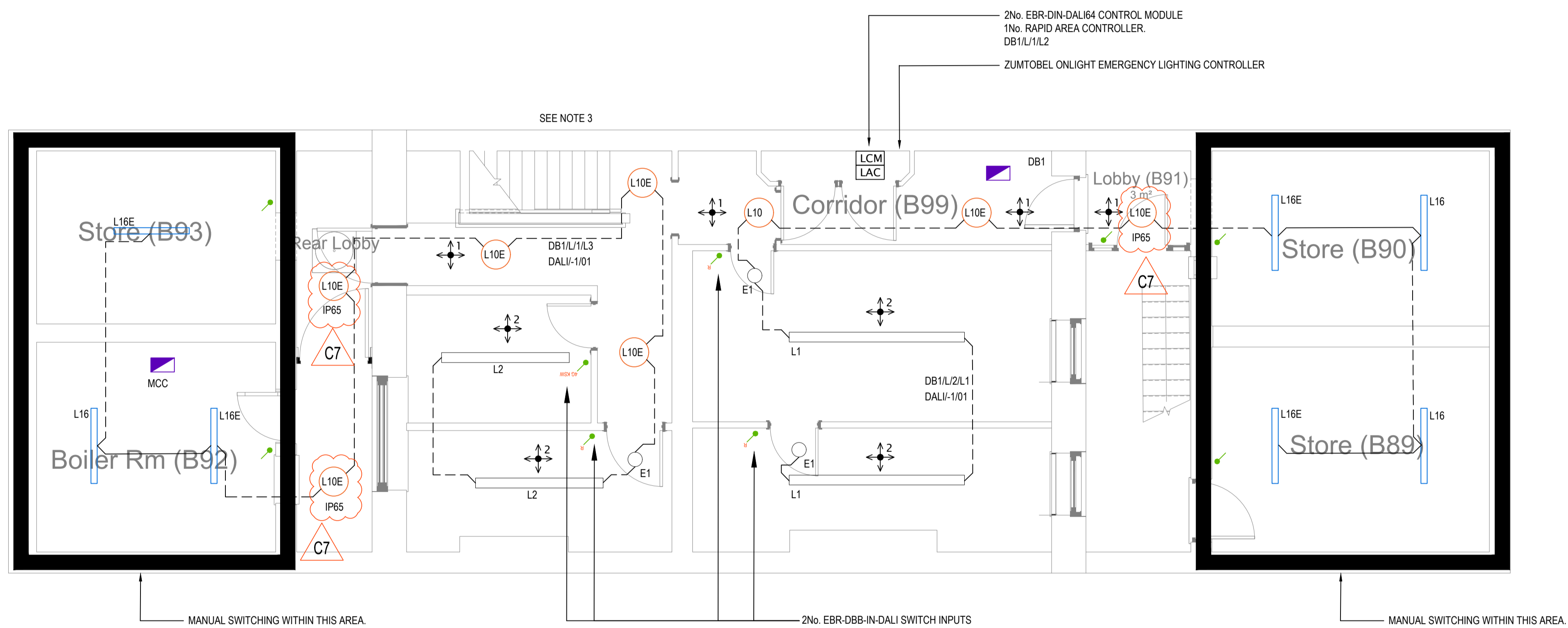
The design team have highlighted unusual and significant risks that may not be obvious to a competent contractor. They are to assist with risk reduction only and are not necessarily comprehensive. It is assumed that all works will be carried out by a competent contractor working, where appropriate, to an approved method statement.

GENERAL NOTES

- THIS DRAWING IS TO BE READ IN CONJUNCTION WITH ALL PROJECT SPECIFIC DESIGN CALCULATION DOCUMENTS AND SCHEDULES PRODUCED BY CARMEL MEP.
- ANY DISCREPANCIES IN THE DETAILED INFORMATION SHOULD BE BROUGHT TO THE ATTENTION OF CARMEL MEP.
- EMERGENCY LIGHTING THROUGHOUT TO BE LINKED AND MONITORED VIA A ZUMTOBEL ONLIGHT SYSTEM.

LEGEND

- CP ELECTRONICS EBR-CPIR-DALI PIR (PRESENCE DETECTION)
- CP ELECTRONICS EBR-CPIR-DALI PIR (ABSENCE DETECTION)
- R - RETRACTABLE SWITCH (XG REPRESENT No. OF GANGS)
- KSW - KEY SWITCH (XG REPRESENT No. OF GANGS)
- - CIRCUIT LINE
- - SWITCH LINE



Risk
Electrocution
Working at Height

SEE NOTE 3

NOTE - L10 LUMINAIRES IN EXTERNAL AREA ARE TO BE IP65 RATED

rev.	description	drawn	chkd.	date
C7	Mods As Shown	NB	GD	21-11-19
C6	External Lighting Added. Onlight system	DC	AD	12-11-19
C5	Construction Issue	KL	GD	12-11-19
C4	Construction Issue	KL	GD	21-10-19
C3	Construction Issue	KL	GD	27-09-19
C2	Construction Issue	NB	GD	09-09-19
C1	Construction Issue	JB	GD	19-08-19

carmel (UK) Ltd

Carmel (UK) Limited

Midland House, Midland Place, Derbyshire, S43 4FR
 Tel: +44 (0) 1246 575 800
 Fax: +44 (0) 1246 575 801
 e-mail: chesterfield@carmel-uk.com

Unit A, Benthem House, Epsom, Surrey, KT19 9BE
 Tel: +44 (0) 1246 575 800
 Fax: +44 (0) 1272 746 501
 e-mail: epsom@carmel-uk.com

Client
University College London

Address
91 Gower Street

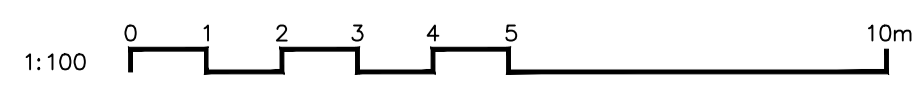
Title
**Lighting Services
Basement
Stage 4**

Drawing No.
6000 - DRG - ZZZ - B1 - DR - E - 6301

Project No. 1790	Scale 1:50@A1	Revision C7
----------------------------	-------------------------	-----------------------

Final Check For Issue (uncontrolled copy unless signed)	Initials	Signature	Date
--	----------	-----------	------

CONSTRUCTION



COPYRIGHT: This drawing is copyright and may not be altered, reproduced or used other than for the Contract for which it is issued without the written permission of CARMEL (UK) Ltd. WARNING: Do not trade this drawing. Verify all dimensions and structural details on site. It is made available as a PDF.