



STREET ELEVATION

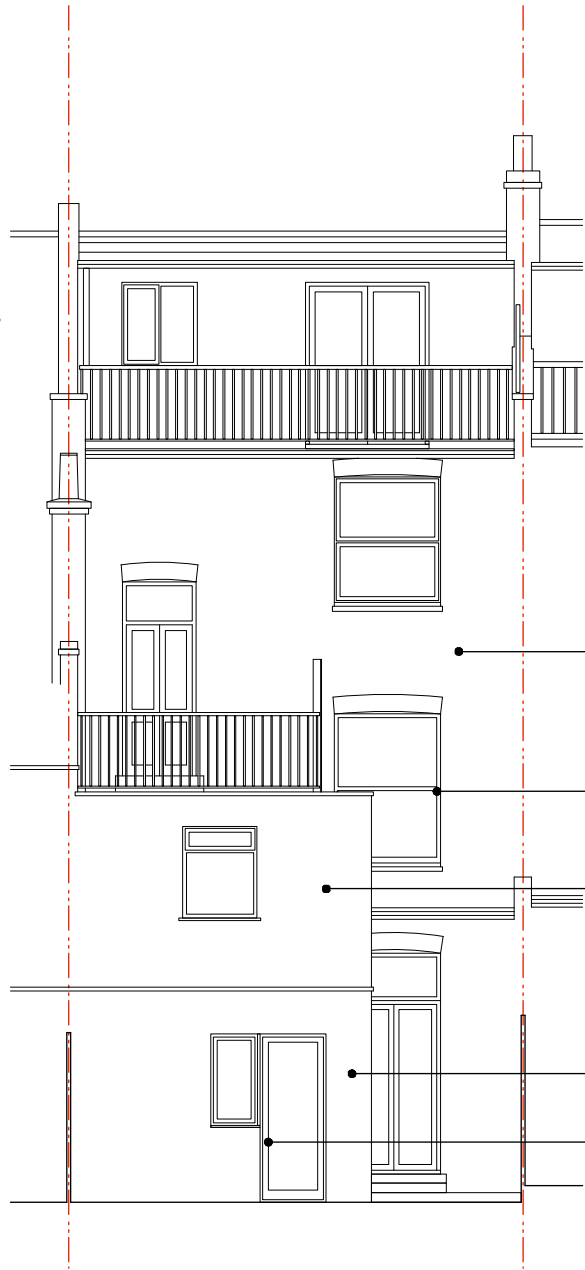


FRONT ELEVATION

blue/ grey slate roof tiles

red brickwork  
with red brick banding  
and window arch details

white painted timber  
sash windows



REAR ELEVATION

red brick  
to main body of house

white painted  
timber sash windows

red brick  
to existing FF outrigger element

white render  
to existing GF outrigger element

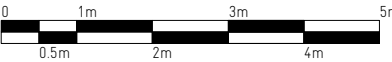
white uPVC casement windows

date: JANUARY 2020  
scale: 1:100 @ A3  
job: GOLDHURST TERRACE  
drawing: AS EXISTING\_  
FRONT AND REAR ELEVATIONS  
number: **141 004**  
revision: P01  
drawn: EW  
checked: NS

GENERAL NOTES:

1. DO NOT SCALE FROM THIS DRAWING, EXCEPT FOR PLANNING PURPOSES
  2. ALL DIMENSIONS AND LEVELS TO BE CHECKED ONSITE
  3. ALL STRUCTURAL ELEMENTS TO STRUCTURAL ENGINEER'S SPECIFICATION AND DETAILS
  4. ALL DETAILS TO MANUFACTURERS SPECIFICATION AND DETAILS
  5. DRAWINGS TO BE READ IN CONJUNCTION WITH SCOPE OF WORKS T01
  6. ALL DETAILS SUBJECT TO BUILDING CONTROL APPROVAL
  7. ISSUE NOT FOR CONSTRUCTION
- ©2020 - MAY NOT BE REPRODUCED WITHOUT PERMISSION

revision	date	details
P01	16.01.20	planning



**RUSSIAN  
FOR FISH**

unit 16 durham yard  
teesdale street  
london e2 6qf  
studio@russianforfish.com  
020 7739 4442