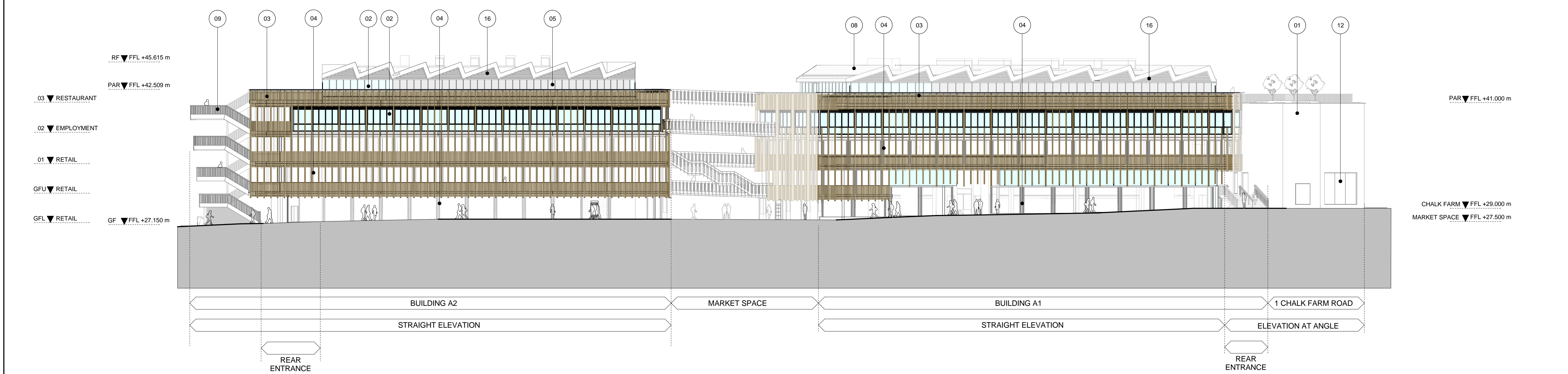


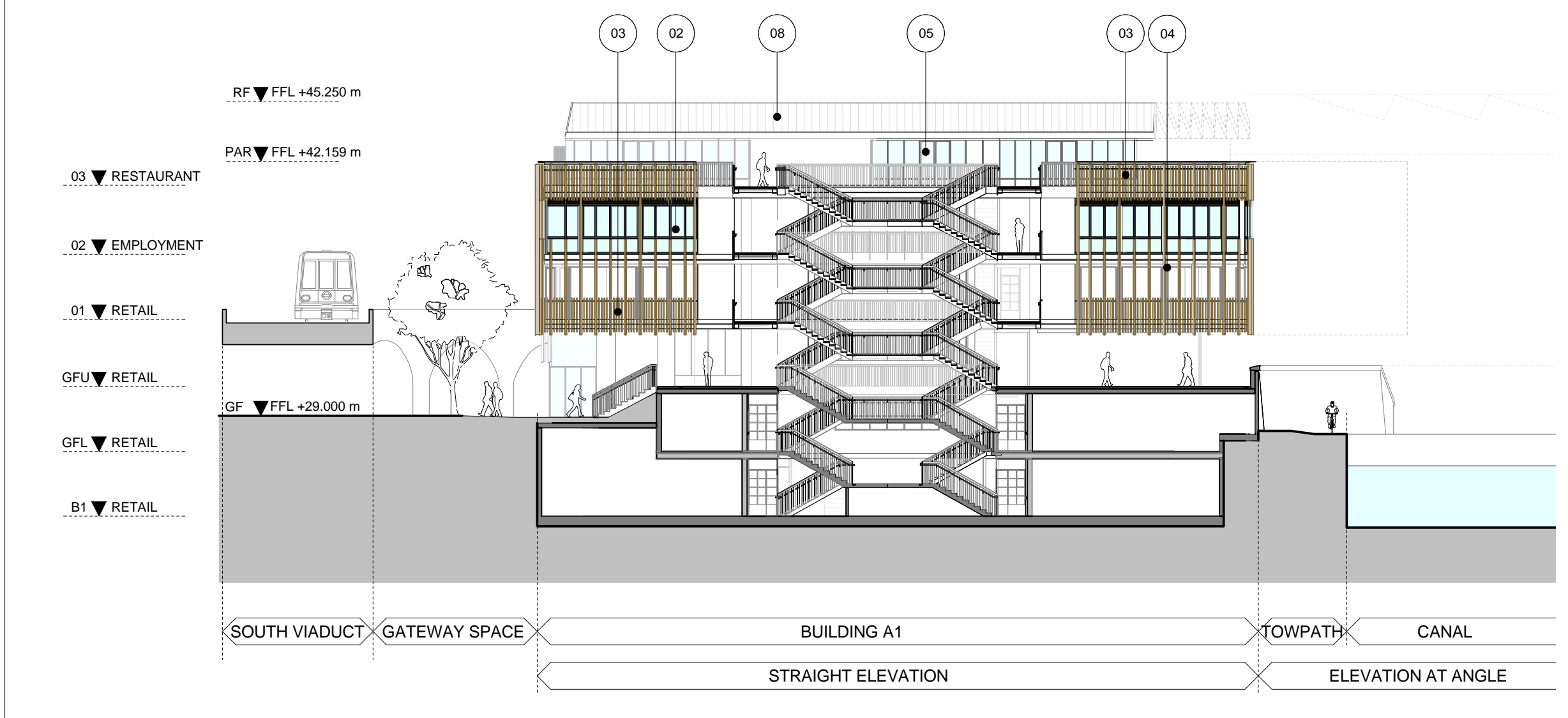
01 SOUTH ELEVATION AA



02 NORTH ELEVATION BB



03 SOUTH ELEVATION CC



04 SOUTH/WEST ELEVATION DD

KEY

- 01 BRICK
- 02 METAL FRAMED GLAZING
- 03 TERRACOTTA SCREEN
- 04 METAL SHUTTERS
- 05 METAL PANEL(S)
- 06 METAL BRIDGE
- 07 TIMBER BENCH
- 08 METAL ROOF
- 09 METAL BALUSTRADE / HANDRAIL
- 11 METAL FRAMED GLAZED DOOR
- 12 METAL FRAMED GLAZED SHOPFRONT
- 13 VERTICAL TERRACOTTA BAGUETTES
- 14 GREEN ROOF
- 16 LOUVER PANEL
- 17 METAL RAILING BALUSTRADE
- 18 GLAZED SHOP FRONTS

P01 01/02/18 Planning Issue

REV	DATE	DESCRIPTION
1	01/02/18	Planning Issue

CONSULTANTS

CLIENT:	Stanley Sidings
CONTRACTOR:	Mace Group
STRUCTURAL ENGINEER:	Walsh Group
MECHANICAL ENGINEER:	AECOM
COST CONSULTANT:	Gardiner & Theobald
PROJECT MANAGER:	Gardiner & Theobald
ACOUSTIC CONSULTANT:	Arup
TRANSPORT CONSULTANT:	Arup
PLANNING CONSULTANT:	Gerald Eve
LANDSCAPE ARCHITECT:	Fabrik
CDM CO-ORDINATOR:	Gardiner & Theobald

NOTE

1. Do not scale from this drawing.
2. All dimensions to be checked on site by the contractor and such dimensions to be his responsibility.
3. Report all drawing errors, omissions and discrepancies to the architect.
4. This document may be issued in an uncontrolled CAD format to enable others to use it as background information to make alterations and/or additions. In that instance the file will be accompanied by a PDF version. It is for those making such alterations and additions to ensure that they make use of current background information.
5. AHMM Ltd accepts no liability for any such alterations or additions to the background information or arising out of changes to background information which occur prior to alterations or additions being made.

REFER TO TECHNICAL REFERENCE SHEET FOR SPECIFICATION CLAUSES

DOCUMENT REFERENCE: 14045 A TRS

LOCATION

ALFORD HALL MONAGHAN MORRIS

ARCHITECTS Ltd
5-23 OLD STREET, LONDON, EC1V 9HL
TEL 020 7251 5261 FAX 020 7251 5123 WEB WWW.AHMM.CO.UK

job title
CAMDEN LOCK VILLAGE
Building A - Elevations

drawn by	checked	scale	status
NH	AH	1 : 250 @ A1	For Planning

project	drawing no.	revision
17019	AX_(00)_2051	P01