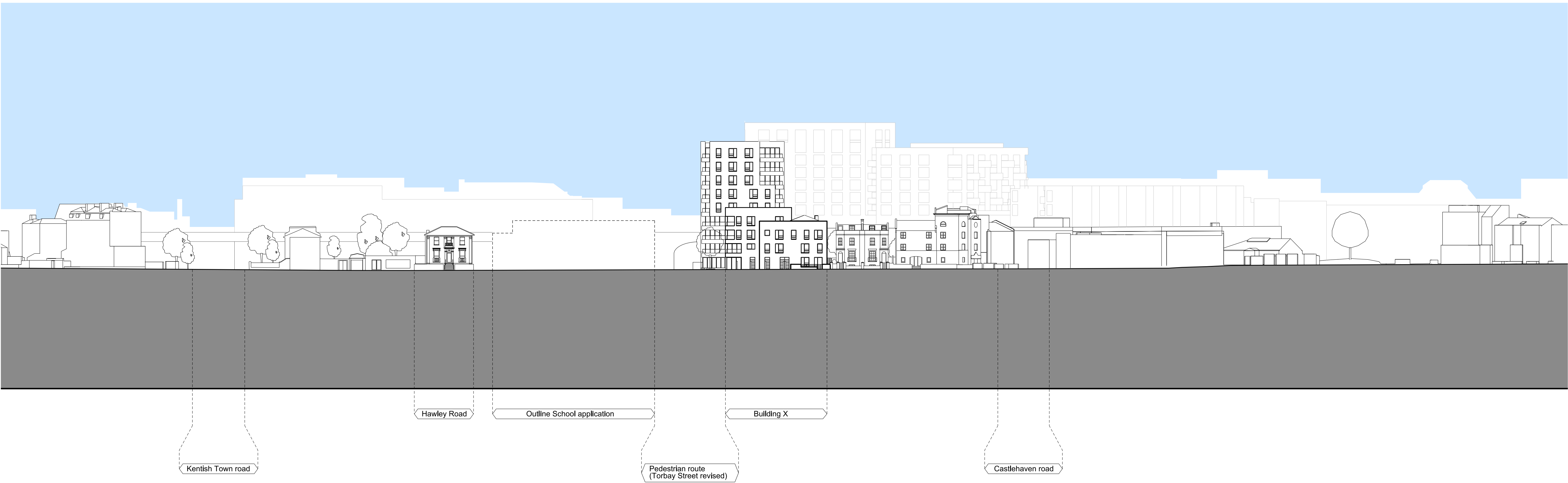


Drawing is to illustrate height, scale and massing only. For detailed elevations please refer to building drawings.



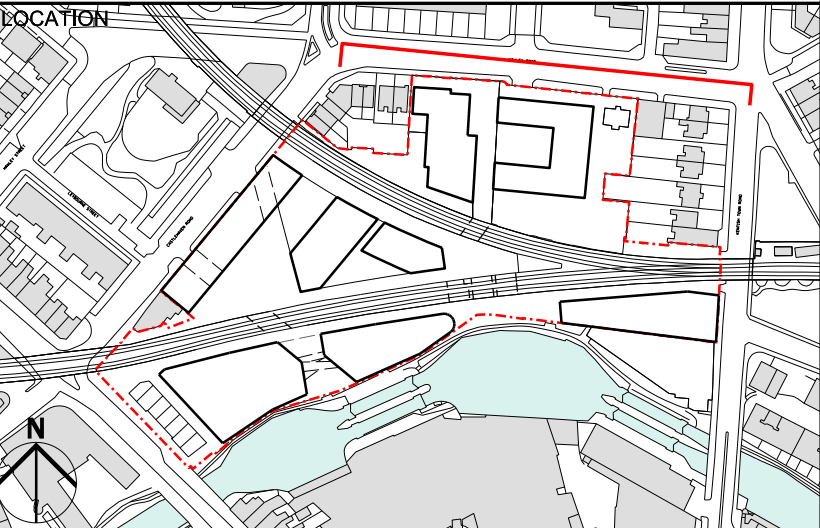
KEY / NOTES

A	30/10/12	BUILDING C2 ROOF PLANT LOWERED TO BE CONSISTENT WITH ELEVATIONS C_201 AND C_202
-	31/08/12	PLANNING ISSUE

REV DATE

NOTE

1. Do not scale from this drawing, other than for Planning purposes.  
2. All dimensions to be checked on site by the contractor and such dimensions to be his responsibility.  
3. Report all drawing errors, omissions and discrepancies to the architect.  
4. This document may be issued in an uncontrolled CAD format to enable others to use it as background information to make alterations and/or additions. In that instance the file will be accompanied by a PDF version. It is for those making such alterations and additions to ensure that they make use of current background information. AHMM Ltd accepts no liability for any such alterations or additions to the background information or arising out of changes to background information which occur prior to alterations of additions being made.



**ALLFORD HALL MONAGHAN MORRIS**  
ARCHITECTS Ltd  
2ND FLOOR, BLOCK C, 5-23 OLD STREET LONDON EC1V 9HL  
TEL 020 7251 5261 FAX 020 7251 5123 WEB WWW.AHMM.CO.UK

job title  
CAMDEN LOCK VILLAGE

drawing title / location  
PROPOSED MASTERPLAN ELEVATION -  
HAWLEY ROAD

drawn by	checked	scale		status		
DC	WL	1:500@A1; 1:1000@A3		PLANNING		
project		zone	source	classification	drawing no.	revision
12001		MP		[00]	202	A