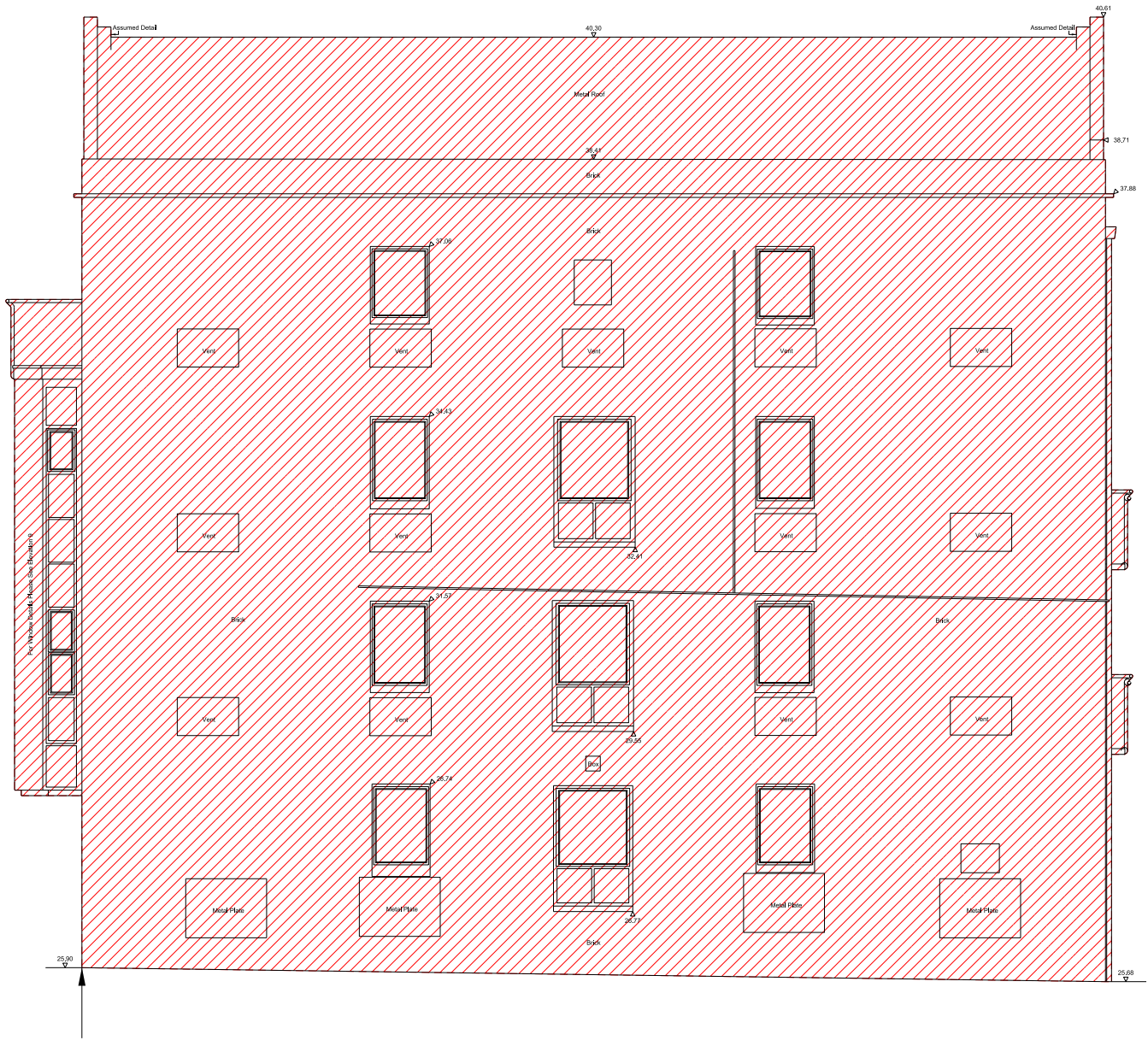


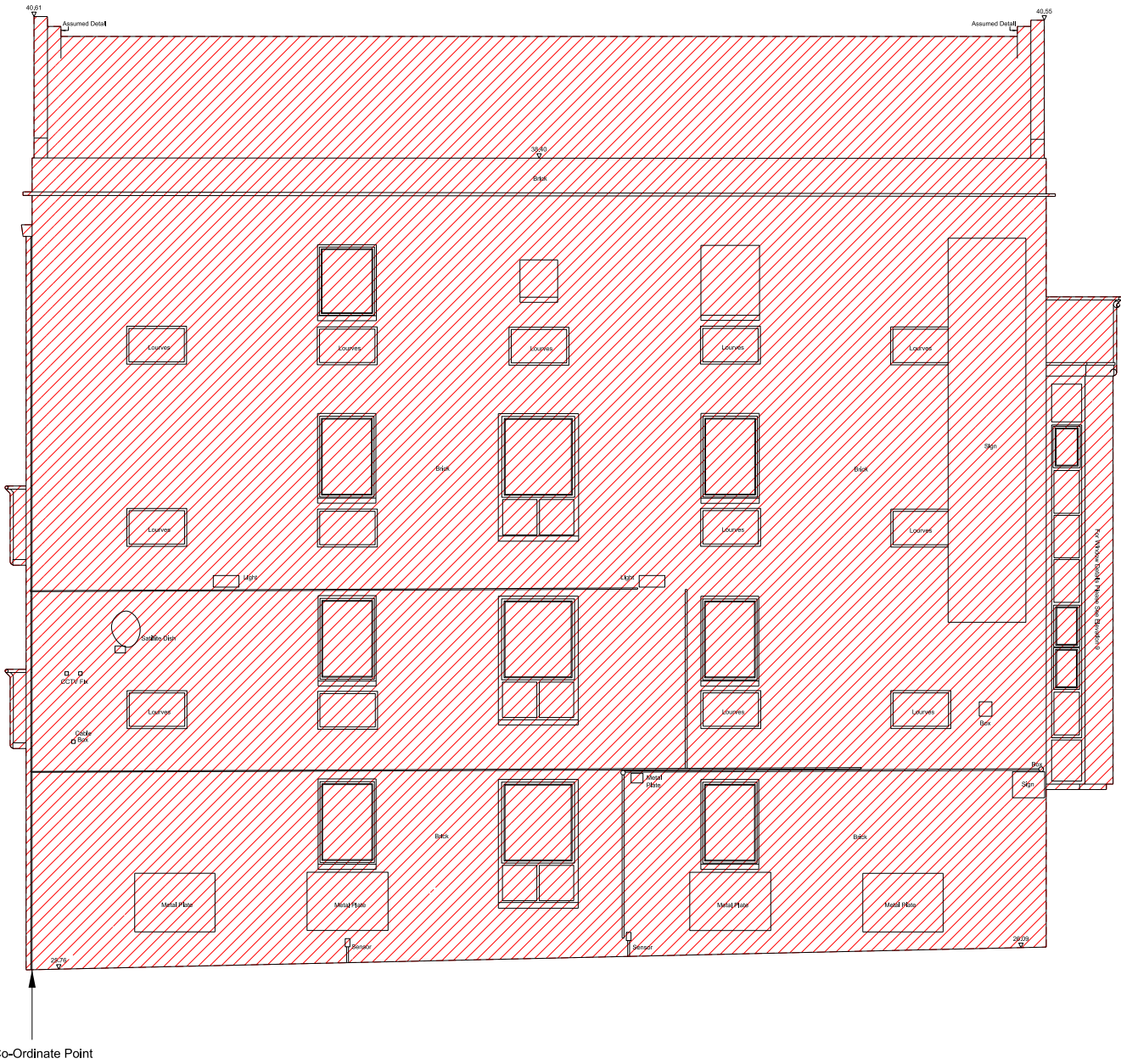
West Elevation



North Elevation



East Elevation
Kentish Town Road Elevation



South Elevation

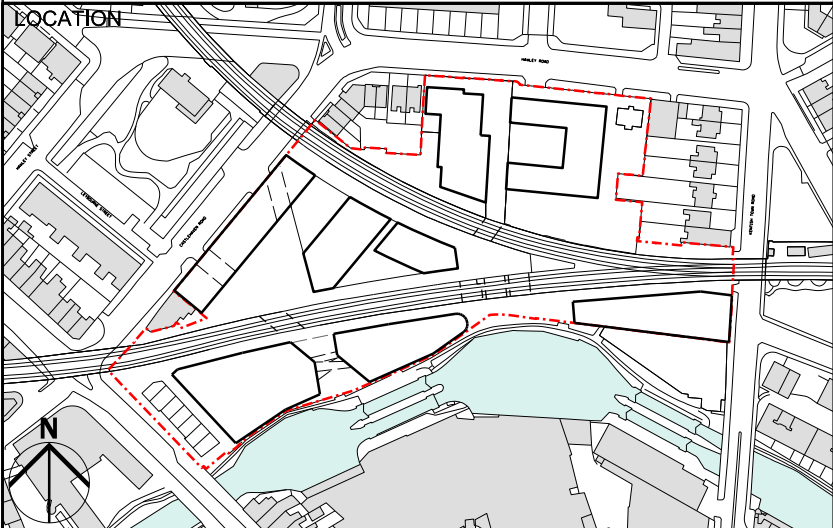
Proposed Demolition

31/08/12 Planning Issue

REV DATE

NOTE

1. Do not scale from this drawing, other than for Planning purposes.
2. All dimensions to be checked on site by the contractor and such dimensions to be his responsibility.
3. Report all drawing errors, omissions and discrepancies to the architect.
4. This document may be issued in an uncontrolled CAD format to enable others to use it as background information to make alterations and/or additions. In that instance the file will be accompanied by a PDF version. It is for those making such alterations and additions to ensure that they make use of current background information. AHMM Ltd accepts no liability for any such alterations or additions to the background information or arising out of changes to background information which occur prior to alterations of additions being made.



ALLFORD HALL MONAGHAN MORRIS
ARCHITECTS Ltd
2ND FLOOR, BLOCK C, 5-23 OLD STREET LONDON EC1V 9HL
TEL 020 7251 5261 FAX 020 7251 5123 WEB WWW.AHMM.CO.UK

job title
CAMDEN LOCK VILLAGE

drawing title / location
PROPOSED DEMOLITION DRAWING
47 KENTISH TOWN ROAD ELEVATIONS

drawn by EN		checked DC		scale 1:100@A1; 1:200@A3		status PLANNING	
project		zone	source	classification	drawing no.		revision
12001		MP	-	[12]	201		-