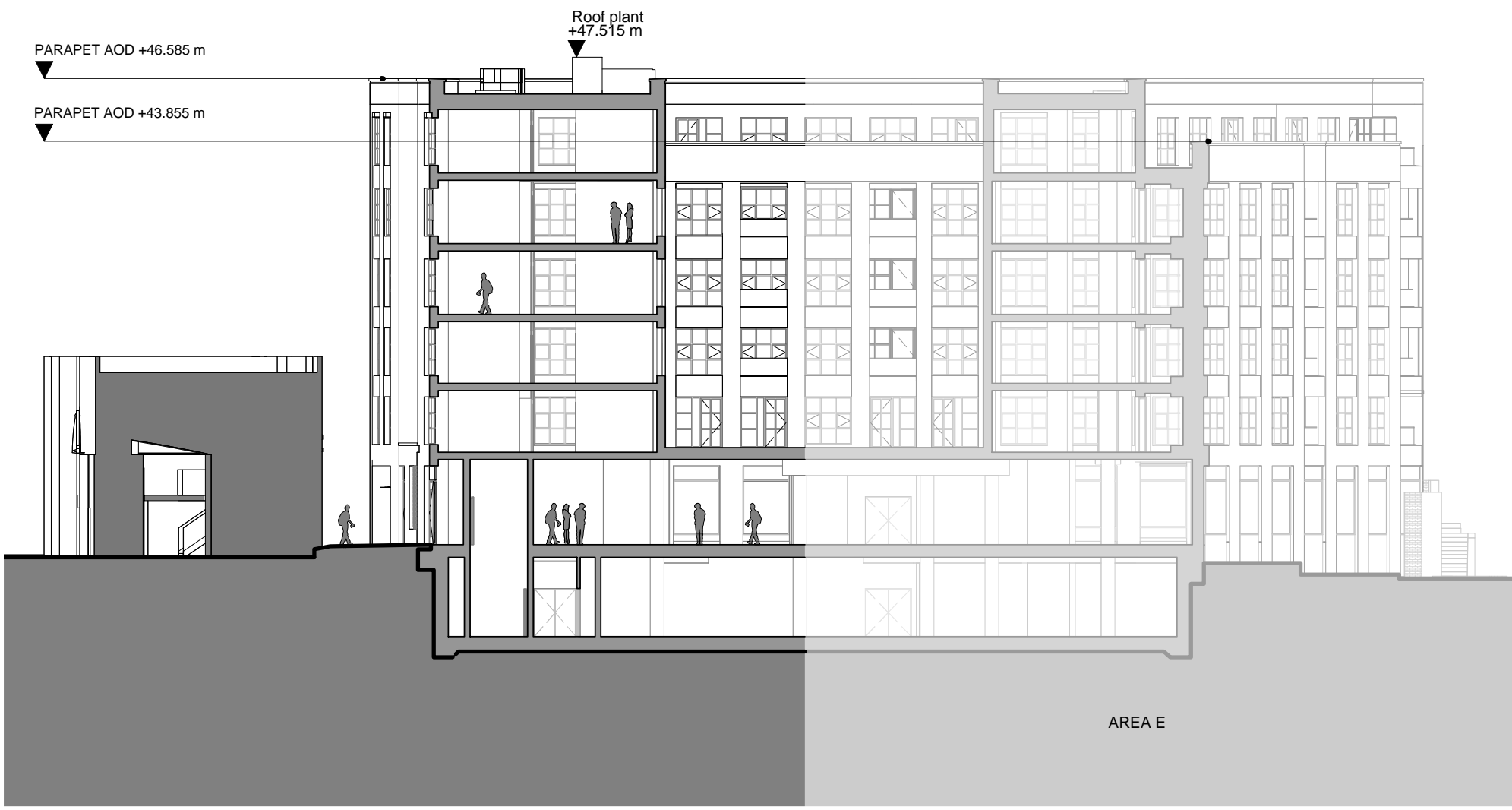


01 BUILDING D SECTION 01



02 BUILDING SECTION 02



03 BUILDING D SECTION 03

KEY

Rev A 09/02/18 Regularisation Planning Submission

REV	DATE	DESCRIPTION

CONSULTANTS

CLIENT:	Stanley Sidings
CONTRACTOR:	Mace
STRUCTURAL ENGINEER:	Walsh Group
MEP ENGINEER:	Aecom
COST CONSULTANT:	Gardiner & Theobald
PROJECT MANAGER:	Gardiner & Theobald
ACOUSTIC CONSULTANT:	Hoare Lea
TRANSPORT CONSULTANT:	Arup
PLANNING CONSULTANT:	Gerald Eve
LANDSCAPE ARCHITECT:	Fabrik
CDM CO-ORDINATOR:	Gardiner & Theobald

NOTE

1. Do not scale from this drawing.

2. All dimensions to be checked on site by the contractor and such dimensions to be his responsibility.
Report all drawing errors, omissions and discrepancies to the architect.

3. This document may be issued in an uncontrolled CAD format to enable others to use it as background information to make alterations and/or additions. In that instance the file will be accompanied by a PDF version. It is for those making such alterations and additions to ensure that they make use of current background information.

4. AHMM Ltd accepts no liability for any such alterations or additions to the background information or arising out of changes to background information which occur prior to alterations of additions being made.

LOCATION

ALFORD HALL MONAGHAN MORRIS

ARCHITECTS Ltd
6-23 OLD STREET, LONDON, EC1V 9HL
TEL 020 7251 5261 FAX 020 7251 5123 WEB WWW.AHMM.CO.UK

job title

CAMDEN LOCK VILLAGE

drawing title / location

BUILDING D
PROPOSED GA SECTIONS

drawn by	checked	scale	status
ABL	KH	1 : 250 @ A1	PLANNING

project	drawing no.	revision
12001	D_(00)_ 300	A